

**Miele**

## PRI 21 Rotary Ironers

Best Ergonomics, Simple Operations, Perfect Laundry Finish

**Miele Professional. Immer Besser.**



# The Feel-good Laundry Factor



Thoroughly cleaned and perfectly ironed table and bed linen are key 'feel-good' factors in hotels and restaurants and are a credit to any nursing home. Miele washer-extractors, tumble dryers and the new ironers meet the most exacting demands both fast and efficiently.

## **Quality**

A perfect laundry finish, high laundry throughput and absolute dependability – only rotary ironers with these attributes deserve a place in an on-premise laundry. Miele confirms the great trust placed in it by users with a typical combination of high-quality materials, perfect workmanship, mature and sophisticated technology and practical innovations.

## **Performance**

With working widths of 39, 55, 65" | 100, 140 and 166cm, the new Miele ironers meet the most exacting requirements for a perfect laundry finish in hotels, restaurants and nursing homes. Excellent user convenience and enhanced ergonomics hold stress at bay.

## **Efficiency**

Economy and ecology are closely related in modern laundry operations. An on-premise laundry is only complete with a compact rotary ironer. Without the distances and inconvenience of contracting work out to bigger laundries, laundry workflow can be defined in-house to meet individual quality requirements. Linens are available for use again fast, cost-effectively and with a perfect finish.



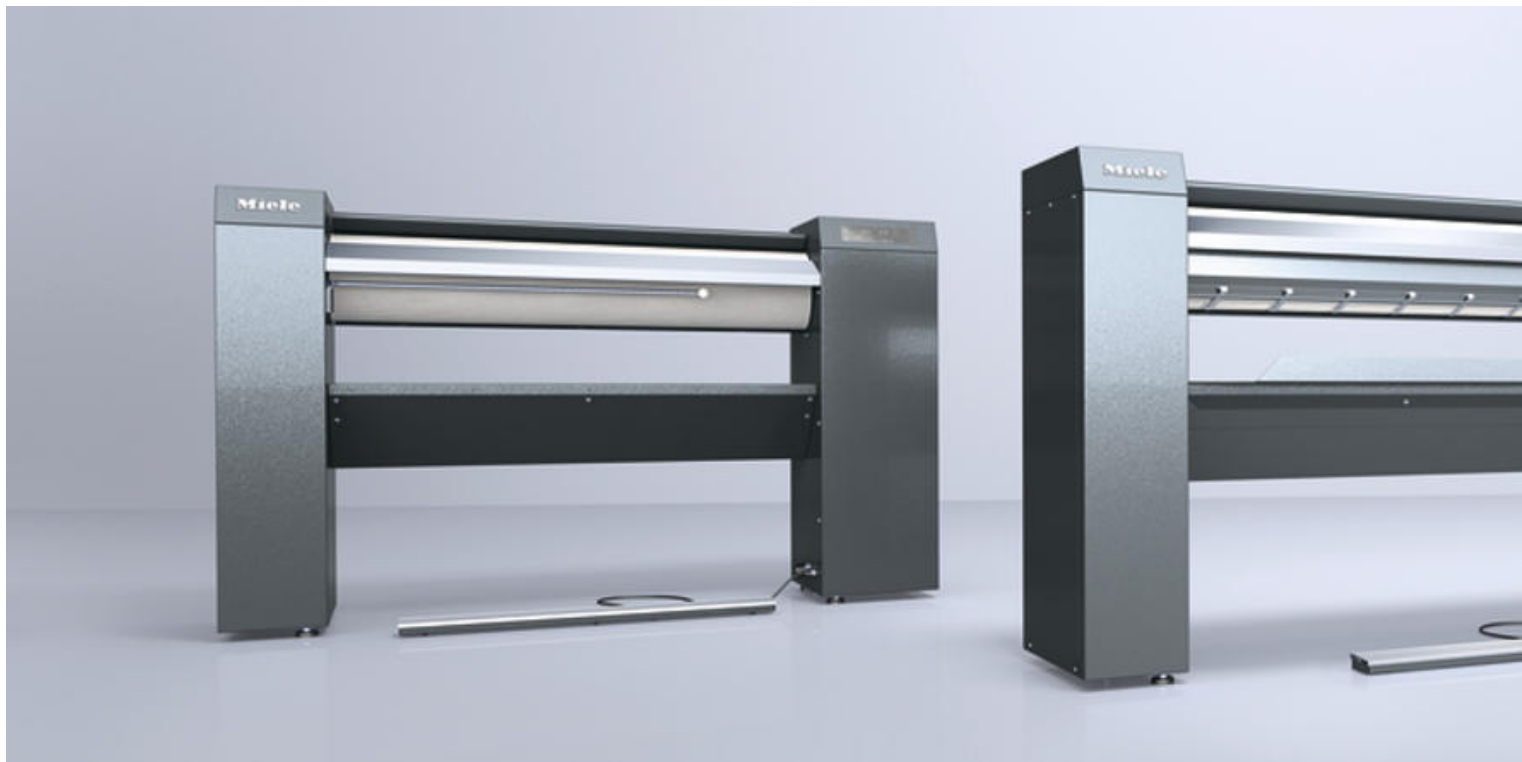
With Miele Professional, you are committing to mature technology, smart innovations and many decades of experience in the development of laundry systems for professionals.

**'Immer besser' or 'Forever better' has been Miele's promise of top-class products, safe processes and a sense of responsibility towards the environment for the past 110 years.**

- A family-run company now managed by the fourth generations of the founding families
- A product policy with a clear focus on quality, innovation and sustainability
- Heavy-duty commercial machines 'Made in Germany'
- Design prizes for innovative, functional and durable products
- Entire systems from a single supplier
- Lower operating costs over entire product life cycle (Total Cost of Ownership)
- Service excellence through service network providing blanket coverage



# Miele PRI 21 Rotary Ironers – Setting New Standards with Exclusive Features



Equipped with innovative product details and high-quality componentry, the new Miele rotary ironers from the PRI 21 series set new standards in the compact category.

## **Best ergonomics**

- Work in a standing or seated position
- Individual working height through adjustable machine feet and optional base

## **Simple operation**

- Large touch display for extremely simple program selection and excellent overview of all important functions
- Freely positionable FlexControl footswitch for fast and convenient ironer operation

## **Exclusive to Miele**

### **Made in Germany**

- Engineered & tested for at least 20,000 operating hours

## **Perfect laundry finish**

- Perfectly finished aluminium trough
- Optimum temperature distribution from infeed side to outfeed edge
- Uniform contact pressure across entire roller length thanks to hydraulic trough suspension
- Outfeed table with automatic laundry cool-down

## **Excellent performance data**

- 3 machine sizes to suit individual applications
- Precise temperature control for perfect energy efficiency
- Clear improvement in performance compared with previous models



Rotary ironers	PRI 210	PRI 214	PRI 217
Roller diameter	21 cm (8 1/4")	21 cm (8 1/4")	25 cm (10")
Roller width	100 cm (40")	140 cm (55")	166 cm (65")
Heating type	Electric	Electric	Electric
Electrical connection [V]; 60 Hz	AC 240/220/208	3AC 240/220/208	3AC 240/220/208
Fuse rating [A]	2x20	3x30	3x50
Total rated load [kW]	3.7/3.2/2.9	7.6/6.5/5.9	12.4/10.5/9.4
Plug/power cord (optional)	NEMA L6-20P	NEMA L15-30P	Hard-wired only
Vent connection [mm]	-	Ø [DN] 70 mm	Ø [DN] 70 mm
Ironing speed [m/min]	1.5 - 4.0	1.5 - 4.0	1.5 - 4.5
Ironing speed [ft/min]	5 - 13	5 - 13	4.9 - 14.7
Laundry throughput residual moisture 15% [per hour]:	23 kg (50 lbs)	-	-
Laundry throughput residual moisture 25% [per hour]:	-	28 kg (62 lbs)	50 kg (110 lbs)
Aluminum trough	•	•	•
Working height [cm]	92 + 6	92 + 6	102 + 6
Working height [in]	36 + 2 1/2	36 + 2 1/2	40 + 2 1/2
External dimensions (H x W x D)	1032/1573/470 mm	1032/1973/651 mm	1110/2233/651 mm
External dimensions (H x W x D)	41 x 62 x 19"	41 x 78 x 26"	44 x 88 x 26"
Weight [kg/lbs]	122/269	140/309	189/417

Features	PRI 210	PRI 214	PRI 217
Height adjustable feet, max. 60 mm (2 1/2")	•	•	•
Base, 100 mm (4")	Optional	Optional	Optional
ARAMID needle felt cloth	•	•	•
FlexControl footswitch	•	•	•
Vapour extraction	-	•	•
Airing bar	•	-	-
Laundry box	Optional	•	•
Connection for payment systems	Optional	Optional	Optional

• = standard; - = not applicable, Throughput according to DIN 11902

# Miele Rotary Ironers: 100% Quality and Functionality for Perfect Results

With its rotary ironers, Miele Professional is demonstrating its expertise in the field of laundry machines: first-class product quality, high-capacity throughput, top-class user convenience and compelling cost-efficiency.



## **PRI 12 series - Benchmark in the compact class**

- Best ergonomics
- Simple operation
- Perfect laundry finish
- Exclusive product features
- Convincing performance



## **Clear, concise display**

- Simple operation at the touch of a fingertip
- All functionalities and symbols in field of vision
- Large display and fast selection of temperature and roller speed
- Direct selection of favourite programs - user-selectable combination of speed and temperature
- Input monitoring for efficient ironing and high-quality finish
- Energy-efficient pause function

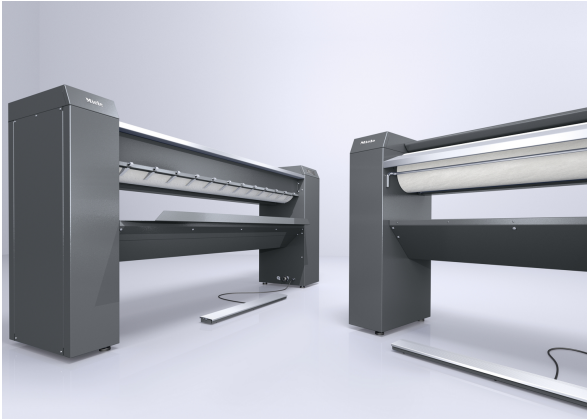


## **Individual working heights for relaxed working conditions**

- Height adjustable feet, max. 60 mm
- Optional base for work in standing position, 100 mm

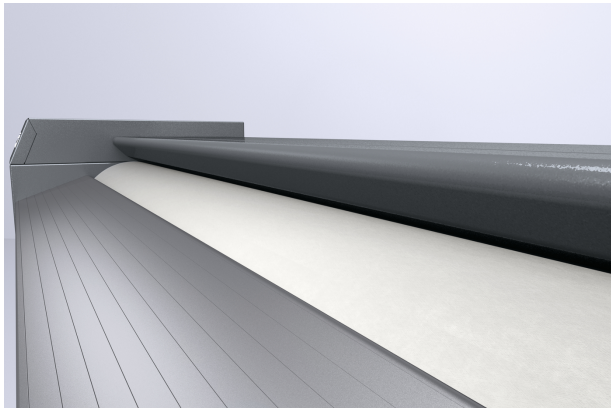
## **Features allowing ergonomic machine operation when seated or while standing**

- Airing bar allows laundry to hang without creasing
- Laundry box for sorting items



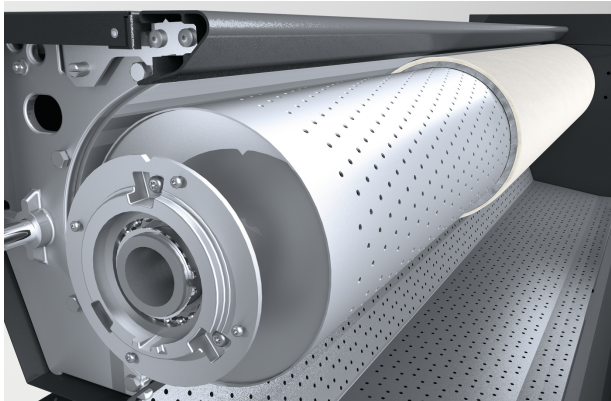
#### **Comprehensive process security**

- Fast roller stop and start using freely locatable FlexControl footswitch
- Service indicator for cleaning and waxing trough
- Professional safety features like fingerguard protection



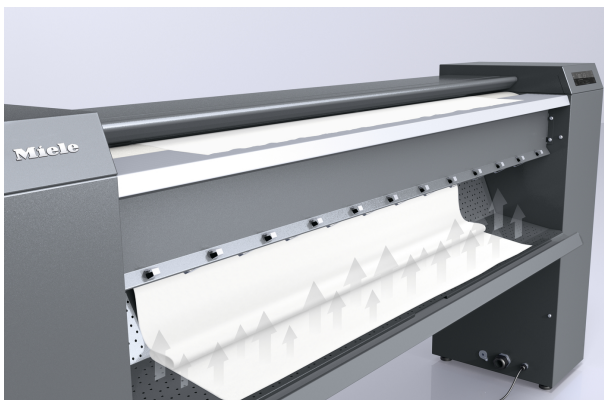
#### **Convenient handling of large items**

- Infeed board for safe introduction of textiles
- Trough stopped and started via the footswitch for individual processing of fabrics
- Infeed monitoring for consistent results across entire roller length



#### **High energy efficiency**

- Properties of aluminium trough for short heat-up times and excellent heat distribution
- Optimum temperature distribution from infeed side to outfeed edge
- Precise temperature control and monitoring using new controls



#### **Perfect laundry finish**

- Special surface treatment
- Hydraulically cushioned trough for uniform contact pressure across entire roller length
- High-quality roller padding with ARAMID needle felt cloth for a perfect finish and a long lifetime of the padding
- Perforated outfeed table for automatic air circulation and laundry cool-down

# Washing, Drying, Ironing: Full-line Solution with New PRI 21 Rotary Ironer



## **Full-line solution with PRI 210 rotary ironer**

In combination with washing machines and tumble dryers from the Little Giants range, the PRI 210 represents the ideal solution for smaller businesses.

## **Benefits of a full-line solution in combination with Miele commercial washing machines and tumble dryers.**

- Choice of vented or condenser dryers
- Tumble dryers with residual moisture control drying linens to exact moisture levels meaning perfect ironing results
- A complete on-premise laundry on the smallest of footprints by backing the ironer against a wall and installing the washing machine and tumble dryer as a stack
- Rotary ironer with 1000 mm roller length and 210 mm roller diameter
- Ironing throughput up to 23 kg/h (50 lbs/h) at a recommended initial moisture level of 15%\*

## **Full-line solution with PRI 214 rotary ironer**

The PRI 214 rotary ironer perfectly complements Miele washing machines and tumble dryers from the Benchmark series. The capacity of this ironer ensures the efficient processing of flatwork in small hotels and nursing homes.



**Benefits of a systematic approach including washing machines and tumble dryers with an 10-20 kg (25-45 lbs) load capacity**

- Tumble dryers with residual moisture control drying linens to exact moisture levels meaning perfect ironing results
- A complete on-premise laundry on the smallest of footprints by backing the ironer against a wall and installing the washing machine and tumble dryer as a stack
- Rotary ironer with 1400 mm roller length and 210 mm roller width
- Ironing throughput of up to 28 kg/h (62 lbs/h) at a recommended initial moisture level of 25%\*

**Full-line solution with PRI 217 rotary ironer**

The PRI 217 ironer is the product of choice for ironing flatwork in hotels, restaurants and nursing homes. Its compact dimensions, its flexibility in use and its high-capacity throughput makes the PRI 217 the ideal product to complement the range in coping with large quantities of laundry on a day-to-day basis.

**Benefits of a full-line approach using Miele commercial washer-extractors and tumble dryers with a capacity of 24 - 32 kg (50-70 lbs)**

- Washing machines and tumble dryers with freely programmable controls
- Energy-saving tumble dryers with air recycling technology
- Space-saving SlimLine tumble dryers
- Rotary ironer with 1660 mm roller length and 250 mm roller diameter
- Ironing throughput up to 50 kg/h (110 lbs/h) at a recommended initial moisture level of 25%\*



# HM 16-80: Compact Ironer



Miele's HM16-80 is the ideal machine for guesthouses, small hotels, bed & breakfasts, restaurants and nursing homes requiring a smaller amount of flatwork. Designed for a wide variety of linens like e.g. table cloths, napkins, pillowcases and sheets. The HM16-80 is the first choice for laundry operations required a lower throughput and where space is of prime consideration.

The HM16-80 also has a built-in water reservoir and steam generator to receive superb ironing results.

## Design

- Freestanding, fold-down design requiring minimum floor space
- Fitted with wheels easy to move
- 83 cm / 33" roller width
- Open roller end on left side to iron larger items
- Durable polyester needle felt padding and cloth Aluminium heater plate for even heat distribution

## Performance

- Throughput per hour: 13 kg /28 lbs

## Controls

- Freely adjustable temperature controls the right temperature for the type of fabric being ironed
- 5 different roller speeds optimum finish optimum working speed
- Automatic foot control
- Adjustable steam volume

## Ergonomics

- Seated or standing operation

## Electrical connection

- 2AC 220-240V, 60Hz, 20A
- Plug: NEMA 6-20

Miele Limited  
Business Unit Professional  
161 Four Valley Drive  
Vaughan, ON, L4K 4V8

Toll Free: 888-325-3957  
professional@miele.ca  
www.mieleprofessional.ca

Miele, Inc.  
Business Unit Professional  
9 Independence Way  
Princeton, NJ 08540

Toll Free: 800-991-9380  
proinfo@mieleusa.com  
www.mieleusa.com/professional

### **Immer besser**

Since 1899, Miele - a family-run company - has subscribed to a clear corporate philosophy condensed into the two words 'Forever better'. Two words which form the foundation for the highest of quality and production standards and have given rise to the innovating prowess of a brand 'Made in Germany'. A brand promise which gives commercial users the certainty of having chosen the right product.

### **Award-winning**

Miele products' unerring focus on top quality and dependability is the reason why Miele has been repeatedly voted best and most reliable brand, most recently in 2012. In major consumer surveys, Miele's product brand also comes out top in the 'Fair production conditions' category.

### **Single-source supply**

Miele Professional offers commercial users durable and long-lasting washer-extractors and tumble dryers, dishwashers, washer-disinfectors and sterilizers together with accessories and standards of service and pre-sales advice which are of a similar quality. And, if things should go wrong, Miele's after-sales service operation has been acclaimed for many years in succession for its excellence.