

Product overview Laundry machines and dishwashers

Miele Professional. Immer Besser.



**Miele
AirControl:**
Fewer viruses.
More us.

Page 54



Miele Professional

Never be satisfied with less

With Miele Professional, you are choosing top-class quality. This applies not only to our machines which reliably live up to expectations on a daily basis and give rise to the great trust professional users place in the Miele brand. Miele's proverbial quality goes far beyond this. As a company now run by its fourth-generation proprietors, Miele remains true to its responsibility to its products and processes, its employees and business partners and towards conserving natural resources.

Reliability and responsibility form the bedrock of Miele's entrepreneurial activities and find expression in many different ways. Clients benefit from innovations 'Made in Germany' which set standards throughout the industry as well as from a product design which has received multiple awards for ergonomics and functionality, and from low running costs. Carefully matching systems from Miele Professional cover a wide range of requirements and offer the peace of mind of an efficient and award-winning service network. For you as a professional user, there is simply no reason to be satisfied with less!

Markus Miele Reinhard Zinkann

Dr. Markus Miele

Executive Director and Co-Proprietor

Dr. Reinhard Zinkann

Executive Director and Co-Proprietor





Top performance for all lines of business

That's why professional users opt for Miele Professional

Perfect results

Machines from Miele Professional feature high-performance programme packages for even the most demanding of applications, e.g. for reliable disinfection according to Robert Koch Institute guidelines. Numerous features – many of which are patented in-house developments – guarantee perfect results throughout: in commercial laundries, in hotels and restaurants, in care and nursing homes, in contract cleaning, in coin-op launderettes and in small businesses.

Efficient processes

Miele's proverbial quality stands for fast and smooth processes. With their high-quality, low-maintenance design, our machines are the reliable workhorses in a commercial working environment. An ergonomic design makes for fast and simple operation.



Economic use of resources and improved economics

With low costs throughout a machine's entire life cycle (total cost of ownership), our long-lasting machines are an investment from which you will reap ample rewards – and thanks to numerous innovations will help save valuable resources.

A reliable contact

The right response to all your questions: Our machines are centre-piece in a holistic solution including carefully selected accessories and a wide range of advisory and after-sales services. With Miele Professional as a reliable partner, all commercial challenges can be mastered efficiently.



Washing machines

Thorough cleaning and gentle laundry care



Different requirements in laundry care require special solutions to always achieve perfect results. Thanks to innovative and robust industrial systems as well as application-specific care programmes, our professional washing machines are perfectly geared to commercial use. From SmartBiz washing machines to meet demands which overstretch domestic machines through to Profitronic barrier washing machines for the ultimate in hygiene and protection.



Plug & Go with standard domestic plug

Easy to install and start programmes: The SmartBiz washing machine has a standard domestic plug. Complicated electrical installation is not required.



Particularly efficient

Washing huge mountains of laundry with top A-rated energy efficiency combined with low water and detergent consumption is not only gentle on the environment, it also goes easy on your finances.

Washing machines

SmartBiz

Load capacity 7 kg / DirectSensor controls

Miele's introduction to the world of commercial laundry care, for up to 3 loads per day

- For requirements beyond the scope of a regular domestic appliance
- Disinfection programme for safety margins in laundry hygiene
- Reliable and durable thanks to high-quality design
- Commercial machine with supply lead and plug (Plug & Play)



Washing machine	PWM 300
User interface	DirectSensor
Load capacity [kg]	7
Drum volume [l]	64
Max. spin speed [rpm]	1,400
g-factor/Residual moisture* [%]	535/49
Cycle time ** [mins.]	79
External dimensions H/W/D [mm]	850/596/636

* Residual moisture after hot final rinse, ** Cycle time in 'Cottons 60°C, cold water connection

DirectSensor controls

- Rotary selector
- Text graphics in local language on fascia
- The display provides information on the temperature, spin speed and countdown time

Highlights

- Exclusive to Miele: Gentle and thorough fabric care with honeycomb drum
- Energy efficiency rating A
- Installation as space-saving washer-dryer stack possible
- High-quality machine technology, designed for 10,000 programme cycles or 15,000 hours of operation
- Safe operation according to Machinery Directive for commercial applications





Washing machines

Little Giants / Evolution / Performance
Load capacity 7 kg / M Select controls



Powerful, fast and versatile

Little Giants have stood for fast and efficient performance over decades. Hardly any bigger than a typical domestic appliance, these washing machines reliably meet the needs of users faced with having to run several wash cycles per day and remove stubborn stains.



Durability

These robust commercial washing machines are built to run for 30,000 hours. Technical details such as the stainless-steel flange produced by Miele or the low-vibration Profi Eco motor stand for reliability for many years to come.

Particularly efficient

Washing huge mountains of laundry with top A-rated energy efficiency combined with low water and detergent consumption is not only gentle on the environment, it also goes easy on your finances.

EVOLUTION
PERFORMANCE

Washing machines

Little Giants / Performance Plus
Load capacity 6-8 kg / M Touch Flex controls



Top performance in compact class

Little Giants are tried-and-tested powerhouses and ideal for users who require increased performance in their compact in-house laundries: Higher load capacities, a greater choice of programmes and more user convenience thanks to innovative controls.



M Touch Flex control system

Full-touch controls with a colour display set new standards in terms of fast and individual machine use – controlled at the touch of a fingertip or by swiping. This approach offers a multitude of configurations, e.g. including lists of favourites, for frequently used programmes.

Load capacities to meet all requirements

Perfect match for your laundry volumes: The broad model portfolio allows the perfect selection of load capacities to meet your needs – for first-class results and cost-efficiency.

PERFORMANCE PLUS

Washing machines

Little Giants / Evolution / Performance
Load capacity 7 kg / M Select controls

Compact machine dimensions for a wide range of applications

- Powerful, fast and space-saving
- Particularly simple and direct user interface
- Programme packages for sport, hairdressers/wellness, hotels, workwear and disinfection

EVOLUTION PERFORMANCE



Washing machine	PWM 307	PWM 507	PWM 508
User interface	M Select	M Select	M Select
Load capacity [kg]	7	7	8
Drum volume [l]	64	64	73
Max. spin speed [rpm]	1600	1600	1600
g-factor/Residual moisture* [%]	704 /48	704/48	704 /48
Cycle time: Cold wash / Warm wash** [mins.]	59/-	59/49	59/49
External dimensions H/W/D [mm]	850/596/714	850/596/714	850/596/714

* Residual moisture after hot final rinse, ** Cycle time in 'Cottons 60°C, hot water fill

M Select controls

- Rotary selector
- Programme symbols on control panel
- Touch display with all information in local language, 29 languages

Highlights

- Exclusive to Miele: Gentle and thorough fabric care with new patented honeycomb drum
- Very low residual moisture levels on account of high g-factor
- Exclusive to Miele: CapDosing for practical dispensing in the right quantity, e.g. fabric conditioner, detergent for woollens
- Energy efficiency rating A
- Installation as space-saving washer-dryer stack possible

Hygiene model version

- Designed to meet heightened demands on hygiene with margins of safety thanks to several additional disinfection programmes, including cycles in compliance with the Robert Koch Institute list.

MopStar model version

- Designed for facility management and contract cleaners

Special model version

- Set of controls with maximum of 4 individually selectable programmes.

Washing machines

Little Giants / Performance Plus

Load capacity 6-8 kg / M Touch Flex controls

Matching sizes for all applications

- Model versions with 6, 7 and 8 kg load capacity
- Modern programme diversity and intuitive touch controls
- Programme packages for sport, hairdressers/wellness, hotels and home textiles, workwear, disinfection according to Robert Koch Institute and WetCare
- Connectivity



PERFORMANCE PLUS

Washing machine	PWM 906	PWM 907	PWM 908
User interface	M Touch Flex	M Touch Flex	M Touch Flex
Load capacity [kg]	6	7	8
Drum volume [l]	57	64	73
Max. spin speed [rpm]	1,600	1,600	1,600
g-factor/Residual moisture* [%]	704/48	704/48	704/48
Cycle time ** [mins.]	49	49	49
External dimensions H/W/D [mm]	850/596/714	850/596/714	850/596/714

* Residual moisture after hot final rinse, ** Cycle time in 'Cottons 60°C, hot water fill

M Touch Flex control system

- High-level user convenience through full-touch colour display
- Simple and intuitive user interface at the touch of a fingertip
- All information as plain text, 31 languages

Highlights

- Exclusive to Miele: Gentle and thorough fabric care with new patented honeycomb drum
- Very low residual moisture levels on account of high g-factor
- Efficient connectivity
- Exclusive to Miele: CapDosing for practical dispensing in the right quantity, e.g. fabric conditioner, detergent for woollens
- Installation as space-saving washer-dryer stack possible

Self-service model version

- Designed to meet the needs of coin-operated laundries

Washing machines

Octoplus

Load capacity 9 kg / Profiline B Symbol controls

Wash heaps of laundry with ease

- High load capacities for everyday applications
- Simple user interface



octoplus®

Washing machine/Washer-dryer stack	PW 5082 XL
User interface	Profiline B Symbols
Load capacity [kg]	9
Drum volume [l]	80
Max. spin speed [rpm]	1,200
g-factor/Residual moisture* [%]	440/50
Cycle time ** [mins.]	54
External dimensions H/W/D [mm]	1,020/700/727

* Residual moisture after hot final rinse, ** Cycle time in 'Cottons 60°C, hot water fill

Profiline B Symbols controls

- Rotary selector
- Programme symbols on control panel
- Display with clear text user interface
- The display provides information on the temperature, spin speed and countdown time

Highlights

- Exclusive to Miele: Gentle and thorough fabric care with new patented honeycomb drum

MopStar model version

- Designed for facility management and contract cleaners

Washing machines

Octoplus

9-10 kg load capacity / Profitronic L Vario

Top-class power and performance for demanding tasks

- Large range of programmes for specific types of soiling
- Individually selectable user interfaces
- Programme packages for sport, hairdressers/wellness, hotels and home textiles, workwear, disinfection, WetCare, fire brigades and riding stables

octoplus®



Washing machine/Washer-dryer stack	PW 6080 XL Vario	PWT 6089 XL Vario	PW 5105 Vario
User interface	Profitronic L Vario	Profitronic L Vario	Profitronic L Vario
Load capacity [kg]	9	Wash 9 / Dry 9	10
Drum volume [l]	80	80/180	100
Max. spin speed [rpm]	1,300	1,300	1,100
g-factor/Residual moisture* [%]	520/44	520/44	370/50
Cycle time [min.]	53**	Washing 53**/Drying 41***	53**
External dimensions H/W/D [mm]	1,020/700/727	1,930/700/752	1,020/700/827

* Residual moisture after hot final rinse, ** Cycle time in 'Cottons 60°C, hot water connection, *** Cycle time in Normal dry

Profitronic L Vario controls

- 4 direct-access pushbuttons plus jog shuttle
- Display showing all information in local language
- Safe work processes through multi-stage user interface

Highlights

- Exclusive to Miele: Gentle and thorough fabric care with honeycomb drum
- PWT 6089 Vario: Space-saving washer/dryer stack

Washing machines

The Benchmark Machines / Performance
Load capacity 13–20 kg / M Touch Pro controls

The foundation for high performance

Benchmark Machines meet the highest of demands posed by modern-day laundry care – and offer exceptional value for money. Their high laundry throughput combines with unique features, including flexible M Touch Pro controls with integrated disinfection programmes.



Maximum user convenience

Convenience on all levels: Modern controls and easy-to-read indicators in the user's own language stand for the ultimate in user convenience. Features such as the 415 mm wide door opening and the OneFingerTouch door lock make for ergonomic loading and unloading.

Peerless quality

Beyond robust commercial technology, these machines also offer numerous innovations providing uncompromising reliability and durability, e.g. Miele's highly developed spring-in-spring suspension system and its 3D sensor to monitor and analyse imbalances.

THE NEW
BENCHMARK
MACHINES

PERFORMANCE

Washing machines

The Benchmark Machines / Performance Plus
Load capacity 11–20 kg / M Touch Pro Plus controls

Peak performance guaranteed

With their unique, freely programmable M Touch Pro Plus controls, the new Benchmark Machines offer a broad and highly differentiated set of programmes. These adapt effortlessly to individual customer requirements and can be enhanced through the addition of new programmes to ensure machine potential can be used to the full.



Outstanding cost-effectiveness

The new standard for low operating costs: Uncompromising reliability, technical innovations and reduced consumption all come together to ensure an investment which pays its way fast.

EcoSpeed for the ultimate in efficiency

Fast, efficient and thorough: Working at a low speed, the scoop ribs take in a large amount of water, which wets the laundry intensively from above. As the drum speed gradually increases, laundry is spun out against the drum through centrifugal force and water is forced out of the wet garments.

THE NEW
BENCHMARK
MACHINES

PERFORMANCE PLUS

Washing machines

The Benchmark Machines / Performance
Load capacity 13–20 kg / M Touch Pro controls

Top-class wash performance and unique features

- Flexibly adjustable programmes for a wide range of applications
- Convenient user interface with gestures
- Disinfection programme package



PERFORMANCE

Washing machine	PWM 514	PWM 520
User interface	M Touch Pro	M Touch Pro
Load capacity 1:10/1:9 [kg]	13–14	18–20
Drum volume [l]	130	180
Max. spin speed [rpm]	1,025	950
g-factor/Residual moisture* [%]	360/49	360/49
Cycle time ** [mins.]	49	49
External dimensions H/W/D [mm]	1,352/799/1,010	1,452/924/950

* Residual moisture after hot final rinse, ** Cycle time in 'Cottons 60°C, hot water fill

M Touch Pro controls

- Intuitive programme controls with full-touch colour display
- Integrated disinfection programmes
- Display with all information in local language, 31 languages

Highlights

- Simple door closure with OneFingerTouch
- Efficient use of resources thanks to new shape of outer drum
- Extremely smooth running, even at high spin speeds, thanks to efficient suspension system.
- Exclusive to Miele: Optimum laundry care thanks to patented honeycomb drum 2.0 with redesigned shower ribs
- Efficient connectivity
- Simple connection of external systems, e.g. payment and dispensing systems

MopStar model version

- Designed for facility management and contract cleaners

Self-service model version

- Designed to meet the needs of coin-operated laundries

Washing machines

The Benchmark Machines / Performance Plus
Load capacity 11–20 kg / M Touch Pro controls

Peak performance and spot-on drying

- Adapts to individual requirements in textile care
- Convenient user interface with gestures
- Standard programme packages, e.g. for hotels, home textiles, contract cleaning, fire brigades, WetCare, riding stables and disinfection



PERFORMANCE PLUS

Washing machine	PWM 912	PWM 916	PWM 920
User interface	M Touch Pro Plus	M Touch Pro Plus	M Touch Pro Plus
Load capacity 1:10/1:9 [kg]	11–12	14–16	18–20
Drum volume [l]	110	140	180
Max. spin speed [rpm]	1,075	1,075	1,075
g-factor/Residual moisture* [%]	460/44	460/44	460/44
Cycle time ** [mins.]	42	43	44
External dimensions H/W/D [mm]	1,352/799/940	1,452/924/849.5	1,452/924/950

* Residual moisture after hot final rinse, ** Cycle time in 'Cottons 60°C, hot water fill

M Touch Pro Plus controls

- Intuitive programme controls with full-touch colour display
- Broad and diverse programme features, fully adaptable
- Integrated disinfection programmes
- Display with all information in local language, 31 languages

Highlights

- Simple door closure with OneFingerTouch
- Efficient use of resources thanks to new shape of outer drum
- Extremely smooth running, even at high spin speeds, thanks to efficient suspension system.
- Exclusive to Miele: Optimum laundry care thanks to patented honeycomb drum 2.0 with redesigned shower ribs
- Efficient connectivity
- Simple connection of external systems, e.g. payment and dispensing systems

Washing machines

Profitronic M

Load capacity 24 and 32 kg / Profitronic M controls

Maximum output and economic feasibility

- Perfect results combined with high throughput
- Adapts to individual requirements in textile care
- Standard programme packages, including for hotels and restaurants, disinfection, contract cleaning, fire brigades, riding stables, sportswear, WetCare



Washing machine	PW 6241	PW 6321
User interface	Profitronic M	Profitronic M
Load capacity [kg]	24	32
Drum volume [l]	240	320
Max. spin speed [rpm]	1,100	1,000
g-factor/Residual moisture* [%]	542/46	448/50
Cycle time ** [mins.]	49	49
External dimensions H/W/D [mm]	1,640/1,085/1,250	1640/1085/1280

* Residual moisture after hot final rinse, ** Cycle time in 'Cottons 60°C, hot water fill

Profitronic M controls

- 6 direct-access pushbuttons plus jog shuttle
- Freely programmable controls with 199 programme slots
- Broad range of programmes, many geared to specific applications
- Display with all information in local language, 11 languages
- Card reader

Highlights

- Exclusive to Miele: Gentle and thorough fabric care with honeycomb drum
- Very low residual moisture levels on account of high g-factor
- High laundry throughput as a result of very short cycles
- Optimised consumption through automatic weighing system
- Heating optional with gas or steam

Washing machines

Profitronic M as barrier machine

Load capacity 16–32 kg / Profitronic M controls

Maximum performance, efficiency and top-class hygiene

- Perfect results combined with high throughput
- Physical separation of unclean and clean side with diaphragm wall
- Standard programme packages, including for hotels and restaurants, disinfection, contract cleaning, fire brigades, WetCare



Images serve as reference only. Actual products may vary.

Washing machine	PW 6163	PW 6243	PW 6323
User interface	Profitronic M	Profitronic M	Profitronic M
Load capacity [kg]	16	24	32
Drum volume [l]	160	240	320
Max. spin speed [rpm]	1,025	975	975
g-factor/Residual moisture* [%]	400/46	360/46	360/41
Cycle time ** [mins.]	55	53	61
External dimensions H/W/D [mm]	1,705/1,110/890	1,705/1,337/890	1,705/1,558/890

* Residual moisture after hot final rinse, ** Cycle time in 'Cottons 60°C, hot water fill

Profitronic M controls

- 6 direct-access pushbuttons plus jog shuttle
- Freely programmable controls with 199 programme slots
- Broad range of programmes, many geared to specific applications
- Display with all information in local language, 11 languages
- Card reader

Highlights

- Exclusive to Miele: Gentle and thorough fabric care with honeycomb drum
- Very low residual moisture levels on account of high g-factor
- High laundry throughput as a result of very short cycles
- Optimised consumption through automatic weighing system
- Heating optional with gas or steam





Dryers

Exceptionally short programme cycles combined with top-class gentle laundry care

It is the aim of Miele Professional to make your daily laundry care as simple as possible. To achieve this goal, we have developed innovative and practical solutions such as the PerfectDry system which dries all textiles to perfection thanks to Miele's exclusive sensor controls.

Very short cycles guarantee fast laundry turnaround. Dryers from Miele Professional are the products of choice when large volumes of laundry require frequent drying.



Miele

Professional
SmartBox

Koch-/Buntwäsche
Pflegeleicht
Feinwäsche
Feinoh-Volle
Schonglätten
Baumwolle PRO

Express
Trocknerwäsche
Bettwäsche
Microfaser
Lüften warm
Baumwolle

100
90
60
30
15
0

Koch-/Buntwäsche
Pflegeleicht
Feinwäsche
Feinoh-Volle
Schonglätten
Baumwolle PRO

Express
Trocknerwäsche
Bettwäsche
Microfaser
Lüften warm
Baumwolle PRO

Miele

Miele

Dryers

SmartBiz

Load capacity 7 kg / DirectSensor controls

Miele's introduction to the world of commercial laundry care, for up to 3 loads per day

- For requirements beyond the scope of a regular domestic appliance
- Integrated heat pump for top-class energy efficiency and simple installation
- Reliable and durable thanks to high-quality design
- Commercial machine with supply lead and plug (Plug & Play)



Dryers	PDR 300 HP
User interface	DirectSensor
Drying system	Heat pump**, integrated condensate drainage
Load capacity [kg]	7
Drum volume [l]	120
Cycle time - Mixed fabrics* [mins.]	99
Type of heating	HP
External dimensions H/W/D [mm]	850/596/606

EL = Electric, HP = Heat pump, * Cycle time in Normal Dry programme, ** Contains FCs, hermetically sealed; Coolant R134a, Coolant quantity 0.31 kg, ODP of coolant: 605 kg CO₂ e, ODP of machine: 188 kg CO₂ e,

DirectSensor controls

- Rotary selector
- Text graphics in local language on fascia
- Display with countdown indicator

Highlights

- Exclusive to Miele: Gentle and thorough fabric care with honeycomb drum
- Exclusive to Miele: Spot-on drying results thanks to PerfectDry system
- Energy efficiency rating A
- Installation as space-saving washer-dryer stack possible
- Safe operation according to Machinery Directive for commercial applications





Dryers

Little Giants / Evolution / Performance
Load capacity 7 kg / M Select controls



Powerful, fast and versatile

Little Giants have stood for fast and efficient performance over decades. Hardly any larger than typical domestic appliances, these dryers cater for installations running several cycles per day and requiring the gentlest of laundry care and defined residual moisture values.

Drying system to meet every need

A vented dryer offers the benefit of particularly short drying cycles of as little as 37 minutes, ensuring that textiles are ready for use again in next to no time. Heat-pump dryers save up to 60% energy compared with conventional condenser dryers and are independent of site conditions.

PerfectDry – Spot-on drying

Thanks to Miele's exclusive PerfectDry sensor drying technology, all garments and textiles are precisely dried. This applies whatever the mineral content as the system adjusts its values automatically to the hardness of the tap water used.

EVOLUTION
PERFORMANCE

Dryers

Little Giants / Performance Plus
Load capacity 8 kg / M Touch Flex controls



Top performance in compact class

Little Giants from the Performance Plus range are tried-and-tested dryers and ideal for users who require increased performance in their compact in-house laundries: Greater load capacities, greater choice of programmes and more user convenience thanks to innovative controls.



M Touch Flex control system

Full-touch controls with a colour display set new standards in terms of fast and individual user interfaces – controlled at the touch of a fingertip or by swiping. This approach offers numerous configurations, e.g. including lists of favourites, for frequently used programmes.

Installation as washer-dryer stack possible

Top performance on a small footprint: A washer-dryer stack represents a highly compact on-premise laundry on a footprint of less than 0.5 m².

PERFORMANCE PLUS

Dryers

Little Giants / Evolution / Performance
Load capacity 7 kg / M Select controls

Compact machine dimensions for everyday applications

- Fast, gentle to laundry and space-saving
- Particularly simple, direct controls
- Numerous special programmes as standard, e.g. for sports, home textiles and hygiene

EVOLUTION PERFORMANCE



32/57	PDR 307 EL / PDR 307 HP	PDR 507 EL / PDR 507 HP	PDR 508 EL / PDR 508 HP
User interface	M Select	M Select	M Select
Drying system	Vented / Heat pump**	Vented / Heat pump**	Vented / Heat pump**
Load capacity [kg]	7	7	8
Drum volume [l]	130	130	130
Cycle time Cottons*	37/67	37/67	37/67
Cycle time - Mixed fabrics*	32/57	32/57	32/57
Type of heating	EL / HP	EL / HP	EL / HP
External dimensions H/W/D [mm]	850/595/710	850/595/710	850/595/710

EL = Electric, HP = Heat pump, D = Steam, HW = Hot water, * Cycle time in 'Normal dry' programme, ** Contains FCs, hermetically sealed;
Coolant type R134a, Coolant volume 0.61 kg, GWP coolant: 1430 kg CO₂ e, GWP machine: 872 kg CO₂ e

M Select controls

- Rotary selector
- Programme symbols on control panel
- Touch display with all information in local language, 29 languages

Highlights

- Exclusive to Miele: Gentle and uniform drying with new patented honeycomb drum
- Spot-on drying results thanks to patented PerfectDry system
- Time savings and convenience thanks to large-surface lint filter
- High efficiency through maintenance-free, energy-saving drive motor
- Installation as space-saving washer-dryer stack possible

Heat-pump dryers

- Flexible installation without the need for vent ducting
- Energy efficiency rating B: Up to 60% energy savings compared with a conventional condenser dryer

Special model version

- Set of controls with maximum of 4 individually selectable programmes.

Dryers

Little Giants / Performance Plus

Load capacity 8 kg / M Touch Flex controls

Compact machine dimensions for all applications

- Fast, gentle to laundry and space-saving
- Modern programme diversity and intuitive touch controls
- Numerous special programmes as standard, e.g. for sports, home furnishings, WetCare, flatwork



PERFORMANCE PLUS

Dryers	PDR 908 EL / PDR 908 HP
User interface	M Touch Flex
Drying system	Vented / Heat pump**
Load capacity [kg]	8
Drum volume [l]	130
Cycle time Cottons/Mixed fabrics* [mins.]	42/37
Type of heating	EL / HP
External dimensions H/W/D [mm]	850/596/717

EL = Electric, HP = Heat pump, D = Steam, HW = Hot water, * Cycle time in 'Normal dry' programme, ** Contains FCs, hermetically sealed; Coolant type R134a, Coolant volume 0.61 kg, GWP coolant: 1430 kg CO₂ e, GWP machine: 872 kg CO₂ e

M Touch Flex control system

- High-level user convenience through full-touch colour display
- Simple and intuitive user interface at the touch of a fingertip
- All information as plain text, 31 languages

Highlights

- Exclusive to Miele: Gentle and uniform drying with new patented honeycomb drum
- Spot-on drying results thanks to patented PerfectDry system
- Time savings and convenience thanks to large-surface lint filter
- High efficiency through maintenance-free, energy-saving drive motor
- Efficient connectivity
- Installation as space-saving washer-dryer stack possible

Heat-pump dryers

- Flexible installation without the need for vent ducting
- Up to 60% energy savings compared with a conventional condenser dryer

Dryers

Octoplus

Load capacity 9 kg / Profiline B Symbol controls

Dry heaps of laundry with ease

- Enhanced performance for everyday use
- Fast and simple programme access



octoplus®

Dryers	PT 5186 XL
User interface	Profiline B Symbols
Drying system	Vented
Load capacity [kg]	9
Drum volume [l]	180
Cycle time Cottons* [mins.]	46
Type of heating	EL
External dimensions H/W/D [mm]	1,020/700/763

EL = Electric, * Cycle time in Normal Dry

Profiline B Symbols controls

- Rotary selector
- Programme symbols on control panel
- Display with clear text user interface
- The display provides information on the temperature, spin speed and countdown time

Highlights

- Exclusive to Miele: Gentle and uniform drying with new patented honeycomb drum
- Exclusive to Miele: Spot-on drying results on all textiles thanks to PerfectDry system

Dryers

Octoplus

Load capacity 9 kg / Profitronic L Vario controls

Top-class power and performance for demanding tasks

- Large range of programmes for standard applications
- Individually selectable user interfaces
- Numerous special programmes as standard, e.g. for sports, home furnishings, hygiene, fire brigades and riding stables



octoplus®

Dryer/washer-dryer stack	PT 7186 XL Vario	PWT 6089 XL Vario
User interface	Profitronic L Vario	Profitronic L Vario
Drying system	Vented	Vented
Load capacity [kg]	9	Wash 9 / Dry 9
Drum volume [l]	180	80/180
Cycle time Cottons* [mins.]	41	Washing 53**/Drying 41
Type of heating	EL	EL
External dimensions H/W/D [mm]	1,020/700/763	1,920/692/763

EL = Electric, * Cycle time in Normal Dry ** Cycle time in Cottons 60°C, hot water connection

Profitronic L Vario controls

- 4 direct-access pushbuttons plus jog shuttle
- Display showing all information in local language
- Safe work processes through multi-stage user interface
- Individual adjustment of dispensing

Highlights

- Exclusive to Miele: Gentle and uniform drying with new patented honeycomb drum
- Exclusive to Miele: Spot-on drying results on all textiles thanks to PerfectDry system
- PWT 6089 XL Vario: Space-saving washer/dryer stack

Dryers

The Benchmark Machines / Performance

Load capacity 14 - 44 kg / M Select COP/TOP/ROP controls

The foundation for ultimate drying performance

Benchmark Machines from the Performance range meet the most discerning of demands for modern and economic laundry care. Their excellent capacity combines with a unique variety of channel-specific controls and features which make for reliable operation, smooth running properties and ergonomic convenience.



Intuitive user interface with new diversity

The newly developed controls combine the familiar and trusted rotary selector with the convenience of modern touch controls. These controls are available in various versions: time and sensor-controlled as well as time controls for use with payment systems in self-service applications.



Load capacities to meet all requirements, 14-44 kg

Perfect match for your laundry volumes: The broad model portfolio allows the perfect selection of load capacities to meet your needs – for first-class drying results and cost-efficiency.

THE NEW
BENCHMARK
MACHINES

PERFORMANCE

Dryers

The Benchmark Machines / Performance Plus
Load capacity 14–44 kg / M Touch Pro controls

Peak performance and spot-on drying

Benchmark Machines from the Performance Plus range offer discerning users far more than just high load capacities and short drying times. With individually programmable M Touch Pro controls, they offer the same familiar user interface philosophy as washing machines and can be perfectly adjusted to on-site requirements. A variety of heating type such as electric, heat pump, hot water, gas or steam contribute to this.



Heat-pump dryers, 14 - 22 kg

The broad product portfolio also allows heat-pump dryers to match load size requirements. An integrated heat pump saves up to 60% energy compared with a conventional condenser dryer. Furthermore, no vent ducting is needed and hence heat-pump dryers can be installed anywhere.

Fast and economic: AirRecycling Flex

AirRecycling Flex is a further development of Miele's unique recirculation controls. The recirculation baffle is adjusted continuously to ensure an ideal balance between recirculated and vented air. The result: Shorter cycles, more uniform drying results and lower energy consumption.

THE NEW
BENCHMARK
MACHINES

PERFORMANCE PLUS

Dryers

The Benchmark Machines / Performance

Load capacity 14–22 kg / M Select COP / TOP / ROP controls

Top-class drying performance and unique features

- Programmes for a broad range of applications
- Convenient user interface with rotary selector and gestures
- Versions with time controls for payment systems (COP), time controls (TOP) and sensor controls (ROP).



PERFORMANCE

Dryers	PDR 514	PDR 518	PDR 522
User interface options	M Select COP / TOP / ROP	M Select COP / TOP / ROP	M Select COP / TOP / ROP
Drying system	Vented	Vented	Vented
Load capacity 1:25/1:18 [kg]	10–14	13–18	16–22
Drum volume [l]	250	325	400
Cycle time* [mins.]	24	24	24
Type of heating	EL, G	EL, G, HW, SI,	EL, G, HW, SI
External dimensions H/W/D [mm]	1,400/906/852	1,400/906/1,035	1,400/906/1,162

EL = Electric, G = Gas, HW = Hot water, SI = Steam indirect * Cycle time in Normal Dry

M Select COP / TOP / ROP controls

- Rotary selector
- Programme symbols on control panel
- Touch display with all information in local language, 29 languages

Highlights

- Exclusive to Miele: Gentle and uniform drying with new patented honeycomb drum
- Exclusive to Miele: Spot-on drying results thanks to PerfectDry system
- Exclusive to Miele: Low energy consumption thanks to patented AirRecycling
- Flexible installation thanks to a variety of heating types: Electric, gas, hot water, steam
- Flexible connectivity

Dryers

The Benchmark Machines / Performance

Load capacity 28–44 kg / M Select TOP / ROP controls

Top-class drying performance and unique features

- Programmes for everyday applications
- Convenient user interface with rotary selector and gestures
- Versions with time controls (TOP) and sensor controls (ROP)



PERFORMANCE

Dryers	PDR 528	PDR 544
User interface options	M Select TOP / ROP	M Select TOP / ROP
Drying system	Vented	Vented
Load capacity 1:25/1:18 [kg]	20-28	32–44
Drum volume [l]	500	800
Cycle time* [mins.]	29	29
Type of heating	EL, G, HW, SI	EL, G, HW, SI
External dimensions H/W/D [mm]	1,640/1,206/1,019	1,640/1,206/1,019

EL = Electric, G = Gas, HW = Hot water, SI = Steam indirect * Cycle time in Normal Dry

M Select COP / TOP / ROP controls

- Rotary selector
- Programme symbols on control panel
- Touch display with all information in local language, 29 languages

Highlights

- Exclusive to Miele: Gentle and uniform drying with new patented honeycomb drum
- Exclusive to Miele: Spot-on drying results thanks to PerfectDry system
- Exclusive to Miele: Low energy consumption thanks to patented AirRecycling
- Flexible installation thanks to a variety of heating types: Electric, gas, hot water, steam
- Flexible connectivity

Dryers

The Benchmark Machines / Performance Plus
Load capacity 14-22 kg / M Touch Pro controls

Peak performance and spot-on drying

- Adapts to individual requirements in textile care
- Intuitive user interface with gestures
- Increased energy efficiency thanks to innovative recirculation controls
- Numerous special programmes as standard, e.g. for bedding, WetCare, fire brigades and riding stables



PERFORMANCE PLUS

Dryers	PDR 914	PDR 918	PDR 922
User interface	M Touch Pro	M Touch Pro	M Touch Pro
Drying system	Vented	Vented	Vented
Load capacity 1:25/1:18 [kg]	10–14	13–18	16–22
Drum volume [l]	250	325	400
Cycle time* [mins.]	24	24	24
Heating types	EL, G	EL, G, HW, SI	EL, G, HW, SI
External dimensions H/W/D [mm]	1,400/906/852	1,400/906/1,035	1,400/906/1,162

EL = Electric, G = Gas, HW = Hot water, SI = Steam indirect * Cycle time in Normal Dry

M Touch Pro controls

- Intuitive programme controls with full-touch colour display
- Integrated disinfection programmes
- Display with all information in local language, 31 languages

Highlights

- Exclusive to Miele: Gentle and uniform drying with new patented honeycomb drum
- Exclusive to Miele: Spot-on drying results thanks to PerfectDry system
- Exclusive to Miele: Low energy consumption and fast drying, in particular of bulky textiles, thanks to patented Air Recycling Plus or AirRecycling Flex
- Flexible installation thanks to a variety of heating types: Electric, gas, hot water, steam
- Flexible connectivity

Dryers

The Benchmark Machines / Performance Plus
Load capacity 28-44 kg / M Touch Pro controls

Peak performance and spot-on drying

- Adapts to individual requirements in textile care
- Intuitive user interface with gestures
- Increased energy efficiency thanks to innovative recirculation controls
- Numerous special programmes as standard, e.g. for bedding, WetCare, fire brigades and riding stables



PERFORMANCE PLUS

Dryers	PDR 928	PDR 944
User interface	M Touch Pro	M Touch Pro
Drying system	Vented	Vented
Load capacity 1:25/1:18 [kg]	20-28	32-44
Drum volume [l]	500	800
Cycle time* [mins.]	29	29
Heating types	EL, G, HW, SI	EL, G, HW, SI
External dimensions H/W/D [mm]	1,640/1,206/1,019	1,640/1,206/1,019

EL = Electric, G = Gas, HW = Hot water, SI = Steam indirect * Cycle time in Normal Dry

M Touch Pro controls

- Intuitive programme controls with full-touch colour display
- Integrated disinfection programmes
- Display with all information in local language, 31 languages

Highlights

- Exclusive to Miele: Gentle and uniform drying with new patented honeycomb drum
- Exclusive to Miele: Spot-on drying results thanks to PerfectDry system
- Exclusive to Miele: Low energy consumption and fast drying, in particular of bulky textiles, thanks to patented Air Recycling Plus or AirRecycling Flex
- Flexible installation thanks to a variety of heating types: Electric, gas, hot water, steam
- Flexible connectivity

Heat-pump dryers

The Benchmark Machines / Performance Plus
Load capacity 14-22 kg / M Touch Pro controls

Peak performance and spot-on drying

- High energy savings thanks to heat pump system
- Adapts to individual requirements in textile care
- Intuitive user interface with gestures
- Increased energy efficiency thanks to innovative recirculation controls
- Numerous special programmes as standard, e.g. for bedding, WetCare, fire brigades and riding stables



PERFORMANCE PLUS

Dryers	PDR 914 HP	PDR 918 HP	PDR 922 HP
User interface	M Touch Pro	M Touch Pro	M Touch Pro
Drying system	Heat-pump**	Heat-pump**	Heat-pump**
Load capacity 1:25/1:18 [kg]	10–14	13–18	16–22
Drum volume [l]	250	325	400
Cycle time* [mins.]	24	24	24
Type of heating	EL	EL	EL
External dimensions H/W/D [mm]	1,400/906/1,237	1,400/906/1,404	1,400/906/1,550

EL = Electric, HP = Heat pump, D = Steam, HW = Hot water, * Cycle time in 'Normal dry' programme, ** Contains FCs, hermetically sealed;
Coolant type R450A, coolant volume 3.2 kg for APDR 901 and 3.8 kg for APDR 902, GWP coolant: 600 kg CO₂ e, GWP APDR 901: 1920 CO₂ e and APDR 902: 2280 kg CO₂ e

M Touch Pro controls

- Intuitive programme controls with full-touch colour display
- Integrated disinfection programmes
- Display with all information in local language, 31 languages

Highlights

- Exclusive to Miele: Gentle and uniform drying with new patented honeycomb drum
- Exclusive to Miele: Spot-on drying results thanks to PerfectDry system
- Exclusive to Miele: Low energy consumption and fast drying, in particular of bulky textiles, thanks to patented Air Recycling Plus or AirRecycling Flex
- Flexible connectivity

Highlight: Heat pump (HP)

- Flexible installation without the need for vent ducting
- Up to 60% energy cost savings compared with a conventional Miele vented dryer
- Exclusive to Miele: Automatic cleaning of heat exchanger thanks to patented StreamClean process

Dryers

SlimLine

8–15 kg load capacity / Profitronic B COP, Profitronic B, Profitronic B Plus controls

Dry heaps of laundry with ease - even in confined spaces

- High-capacity drying for wide range of applications
- Space-saving and uncomplicated installation thanks to slim build
- Specific version for use in coin-op laundries (COP)



Dryers	PT 8301 COP	PT 8301	PT 8203 HP	PT 8303
User interface	Profitronic B COP	Profitronic B	Profitronic B Plus	Profitronic B Plus
Drying system	Vented	Vented	Heat-pump**	Vented
Load capacity [kg]	12–15	12–15	8–10	12–15
Drum volume [l]	300	300	200	300
Cycle time* [mins.]	33	33	63	33
Heating types	EL/G	EL/G	EL/G	EL/G
External dimensions H/W/D [mm]	1,800/711/1,089	1,800/711/1,089	1,800/711/1,075	1,800/711/1,089

EL = Electric, G = Gas, HP = Heat pump, * Cycle time in 'Normal dry' programme, ** Contains FCs, hermetically sealed;
Coolant type R134a, Coolant volume 1.35 kg, GWP coolant: 1430 kg CO₂ e, GWP machine: 1,930 kg CO₂ e

Profitronic B COP controls

- Time controls via connected payment system or central control system
- 4 temperature settings: Cold, low, medium, and high

Profitronic B controls

- Rotary selector
- Time controls with 5-minute increments from 5 to 60 minutes
- 4 temperature settings: Cold, low, medium, and high

Profitronic B Plus controls

- Rotary selector
- Residual moisture controls for 12 programmes

Highlights

- Width of only 711 fits in the smallest of spaces
- Simple relocation thanks to palletiser access
- Shortest cycles thanks to diagonal air flow
- Simple handling thanks to large, easy-to-clean lint filter

Heat-pump dryers

- Flexible installation without the need for vent ducting
- Up to 50% energy savings compared with a standard SlimLine dryer





Steam ironing systems and flatwork ironers

Perfect complementary product in laundry cycle for a superb finish

First-class laundry care with perfect finishing - laundry machines from Miele Professional are centrepiece in a systematic approach including carefully coordinated accessories and a broad range of advisory and after-sales services.

From space-saving products such as the PIB 100 steam ironing system or rotary ironers through to LACO flatwork ironers for users with highest demands and throughput requirements, Miele Professional offers practical and ergonomic solutions to meet all performance needs.

Steam ironing system

PIB 100

Never before was professional ironing simpler!

- Ample steam supply, even for large volumes of laundry
- Easy to relocate and ready for use fast



Steam ironing system	PIB 100
Display	Single-line text display
Water tank [l]	4.5
Steam	4.0 bar, 100 g/min
Ironing surface [W/D mm]	1,190/405
External dimensions H/W/D [mm]	970/470/1,510
External dimensions (folded) [H/W/D mm]	1,200/470/402

Highlights

- Uninterrupted ironing thanks to large-capacity 4.5 l water tank
- Particular gentle finish with integrated steamer
- Ready for use and folded away for storage in next to no time
- Integrated castors for simple relocation
- Safe operation according to Machinery Directive for commercial applications



Rotary ironers

HM 16

First-class finish with ease

- Space-saving ironing of hotel laundry and workwear
- Ergonomic working in seated position

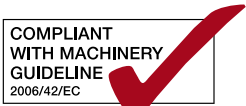


Flatwork ironers	HM 16-80 D	HM 16-83
Roller diameter [mm]	160	160
Working width [mm]	830	830
Steam function	•	–
Trough material	Aluminium	Aluminium
Throughput* at 20% residual moisture [kg/h]	13	15
External dimensions H/W/D [mm]	959/985/380	960/1,050/380

* Figures according to DIN 11902. In practice, throughput is usually 20-40% below the quoted max. figures. Actual throughput depends on the speed and experience of the operator, the type of laundry being ironed, the way it was sorted prior to ironing, the condition of the trough, and the standard of finish required.

Highlights

- High-quality roller padding with polyester needle felt and ARAMID needle felt cloth
- Convenient controls with footswitch, adjustable temperature and roller speed
- Steam function for efficient working and a perfect finish (HM 16-80 D)
- Ergonomic: Ironing in a seated position
- Minimum space required: Ironing can be easily folded for storage



PRI 210, PRI 214 flatwork ironers

Working width 1,000–1,400 mm

Compact performance and high-level functionality

- Ergonomic and simple operation
- Practical innovations to speed up work



Flatwork ironers	PRI 210	PRI 214
Roller diameter [mm]	210	210
Working width [mm]	1,000	1,400
Trough material	Aluminium	Aluminium
Throughput* at 15% residual moisture [kg/h]	35	–
Throughput* at 25% residual moisture [kg/h]	26	33
Type of heating	EL	EL
External dimensions H/W/D [mm]	1,032/1,579/476	1,032/1,979/650

EL = Electric, * Figures as per DIN 11902. In practice, throughput is usually 20-40% below the quoted max. figures. Actual throughput depends on the speed and experience of the operator, the type of laundry being ironed, the way it was sorted prior to ironing, the condition of the trough, and the standard of finish required.

Highlights

- Simple and convenient user interface thanks to large touch display
- Individual working height through adjustable machine feet and optional plinth
- Uniform pressure over the entire working width guarantees a perfect laundry finish.
- High-quality roller padding with steel wool and ARAMID needle felt cloth
- Exclusive to Miele: Freely positionable FlexControl foot switch
- Exclusive to Miele: Infeed monitoring for uniform use of entire roller length

PRI 217 flatwork ironers

Working width 1,660 mm

Compact performance and high-level functionality

- Ergonomic and simple operation
- Practical innovations to speed up work



Flatwork ironers	PRI 217
Roller diameter [mm]	250
Working width [mm]	1,660
Trough material	Aluminium
Throughput* at 15% residual moisture [kg/h]	–
Throughput* at 25% residual moisture [kg/h]	60
Type of heating	EL
External dimensions H/W/D [mm]	1,110/2,238/650

EL = Electric, * Figures as per DIN 11902. In practice, throughput is usually 20-40% below the quoted max. figures.
Actual throughput depends on the speed and experience of the operator, the type of laundry being ironed, the way it was sorted prior to ironing, the condition of the trough, and the standard of finish required.

Highlights

- Simple and convenient user interface thanks to large touch display
- Individual working height through adjustable machine feet and optional plinth
- Uniform pressure over the entire working width guarantees a perfect laundry finish.
- High-quality roller padding with steel wool and ARAMID needle felt cloth
- Exclusive to Miele: Freely positionable FlexControl foot switch
- Exclusive to Miele: Infeed monitoring for uniform use of entire roller length
- Flexible return feed (optional)

PRI 318 flatwork ironers

Working width 1,750 mm

Top performance and innovative functions

- Perfect finish thanks to HPC trough with large contact angle
- Ergonomic operation, e.g. with EasyFold outfeed table
- Gas-heated version offers optimisation of energy costs



Fig. PRI 318 with electric heating

Flatwork ironers	PRI 318
Roller diameter [mm]	300
Working width [mm]	1,750
Trough material	Aluminium
Throughput* at 25% residual moisture EL/G [kg/h]	87/59
Throughput* at 50% residual moisture EL/G [kg/h]	51/33
Heating types	EL/G
External dimensions H/W/D [mm]	1,110/2,469/1,377

EL = Electric, G = Gas, * Figures as per DIN 11902. In practice, throughput is usually 20-40% below the quoted max. figures. Actual throughput depends on the speed and experience of the operator, the type of laundry being ironed, the way it was sorted prior to ironing, the condition of the trough, and the standard of finish required.

Highlights

- Simple and convenient user interface thanks to large touch display
- Uniform pressure and pneumatic stays guarantee a perfect laundry finish over the entire working width.
- High-quality roller padding with steel wool and ARAMID needle felt cloth
- Exclusive to Miele: Freely positionable FlexControl foot switch
- Patented EasyFold outfeed table cools textiles and ensures they stay smooth
- Integrated peak load energy management to optimise energy costs
- Exclusive to Miele: Infeed monitoring for uniform use of entire roller length

PRI 418, PRI 421 flatwork ironers

Working width 1750–2,040 mm

Top performance and innovative functions

- Perfect finish thanks to HPC trough with large contact angle
- Ergonomic operation, e.g. with EasyFold outfeed table
- Gas-heated version offers optimisation of energy costs



Fig. PRI 418 / PRI 421 with gas heating

Flatwork ironers	PRI 418	PRI 421
Roller diameter [mm]	365	365
Working width [mm]	1,750	2,040
Trough material	Aluminium	Aluminium
Throughput* at 25% residual moisture EL/G [kg/h]	104/76	112/78
Throughput* at 50% residual moisture EL/G [kg/h]	63/46	67/42
Heating types	EL / G	EL/G
External dimensions H/W/D [mm]	1,110/2,469/1,441	1,110/2,759/1,441

EL = Electric, G = Gas, * Figures as per DIN 11902. In practice, throughput is usually 20-40% below the quoted max. figures.

Actual throughput depends on the speed and experience of the operator, the type of laundry being ironed, the way it was sorted prior to ironing, the condition of the trough, and the standard of finish required.

Highlights

- Simple and convenient user interface thanks to large touch display
- Uniform pressure and pneumatic stays guarantee a perfect laundry finish over the entire working width.
- High-quality roller padding with steel wool and ARAMID needle felt cloth
- Exclusive to Miele: Freely positionable FlexControl foot switch
- Patented EasyFold outfeed table cools textiles and ensures they stay smooth
- Integrated peak load energy management to optimise energy costs
- Exclusive to Miele: Infeed monitoring for uniform use of entire roller length

LACO flatwork ironer M500, return feed

Working width 1,750–3,300 mm

Top-class performance and efficiency

- Return feed saves on space and personnel
- Excellent finish thanks to flexible, laser-welded trough with large contact angle
- Optimisation of energy costs with model versions with gas and steam heating



Fig.: LACO M500 flatwork ironer, front (laundry infeed and outfeed side)



Fig.: LACO M500 flatwork ironer, rear side

LACO M500 flatwork ironer						
Roller diameter [mm]	500	500	500	500	500	500
Working width [mm]	1,750	2,000	2,200	2,500	3,000	3,300
Laundry throughput* at 50% residual moisture [kg/h]	65/65/58	75/75/67	82/82/74	95/95/85	115/115/103	125/125/112
Heating types	EL/G/D	EL/G/D	EL/G/D	EL/G/D	EL/G/D	EL/G/D
External dimensions H/W/D [mm]	1,265/2,590/1,130	1,265/2,840/1,130	1,265/3,040/1,130	1,265/3,340/1,130	1,265/3,840/1,130	1,265/4,140/1,130

EL = Electric, G = Gas, D = Steam, * Figures as per DIN 11902. In practice, throughput is usually 20-40% below the quoted max. figures. Actual throughput depends on the speed and experience of the operator, the type of laundry being ironed, the way it was sorted prior to ironing, the condition of the trough, and the standard of finish required.

Highlights

- Precise and fast introduction of laundry with feed belts
- High-quality roller padding: Spring padding and two layers of polyester felt (800 g/m²) or optional stainless-steel leaf-spring padding and ARAMID needle felt cloth
- Fast processing of laundry with 60 cm outfeed table
- Highest-quality finish thanks to patented AirStream trough ventilation (optional)
- Precise working with EasyFeed clips and extended infeed table (optional)

LACO D500 flatwork ironers

Working width 1,750–3,300 mm

Top-class performance and efficiency

- Laundry outfeed on rear of unit for increased throughput
- Excellent finish thanks to flexible, laser-welded trough with large contact angle
- Optimisation of energy costs with model versions with gas and steam heating



Fig.: LACO D500 flatwork ironer, front (infeed side)



Fig.: LACO D500 flatwork ironer, rear side (outfeed side)

LACO D500 flatwork ironer						
Roller diameter [mm]	500	500	500	500	500	500
Working width [mm]	1,750	2,000	2,200	2,500	3,000	3,300
Laundry throughput* at 50% residual moisture EL/G/D [kg/h]	65/65/58	75/75/67	82/82/74	95/95/85	115/115/103	125/125/112
Heating types	EL/G/D	EL/G/D	EL/G/D	EL/G/D	EL/G/D	EL/G/D
External dimensions H/W/D [mm]	1,200/2,600/1,725	1,200/2,850/1,725	1,200/3,050/1,725	1,200/3,350/1,725	1,200/3,850/1,725	1,200/4,150/1,725

EL = Electric, G = Gas, D = Steam, * Figures as per DIN 11902. In practice, throughput is usually 20-40% below the quoted max. figures. Actual throughput depends on the speed and experience of the operator, the type of laundry being ironed, the way it was sorted prior to ironing, the condition of the trough, and the standard of finish required.

Highlights

- Precise and fast introduction of laundry with feed belts
- High-quality roller padding: Spring padding and two layers of polyester felt (800 g/m²) or optional stainless-steel leaf-spring padding and ARAMID needle felt cloth
- Fast processing of laundry with 60 cm outfeed table
- Highest-quality finish thanks to patented AirStream trough ventilation (optional)
- Faster roller speed for increased throughput (optional)
- EasyFeed infeed clips and extended infeed and outfeed tables make working more precise (optional)
- Optional laundry return feed for increased flexibility

LACO D600 flatwork ironer

Working width 1,750–3,300 mm

Top-class performance and efficiency

- Return feed saves on space and personnel
- Excellent finish thanks to flexible, laser-welded trough with large contact angle
- Optimisation of energy costs with model versions with gas and steam heating

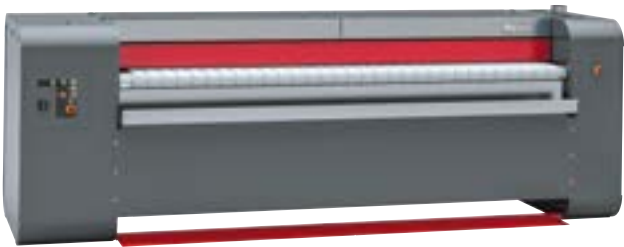


Fig.: LACO D600 flatwork ironer, front (infeed side)



Fig.: LACO D600 flatwork ironer, rear side (outfeed side)

LACO D600 flatwork ironer						
Roller diameter [mm]	600	600	600	600	600	600
Working width [mm]	1,750	2,000	2,200	2,500	3,000	3,300
Laundry throughput* at 50% residual moisture [kg/h]	100/100/90	109/109/98	126/126/113	140/140/126	160/160/144	175/175/157
Heating types	EL/G/D	EL/G/D	EL/G/D	EL/G/D	EL/G/D	EL/G/D
External dimensions H/W/D [mm]	1,395/2,830/1,900	1,395/3,030/1,900	1,395/3,280/1,900	1,395/3,580/1,900	1,395/4,080/1,900	1,395/4,380/1,900

EL = Electric, G = Gas, D = Steam, * Figures as per DIN 11902. In practice, throughput is usually 20-40% below the quoted max. figures. Actual throughput depends on the speed and experience of the operator, the type of laundry being ironed, the way it was sorted prior to ironing, the condition of the trough, and the standard of finish required.

Highlights

- Precise and fast introduction of laundry with feed belts
- High-quality roller padding: Spring padding and two layers of polyester felt (800 g/m²) or optional stainless-steel leaf-spring padding and ARAMID needle felt cloth
- Fast processing of laundry with 60 cm outfeed table
- Highest-quality finish thanks to patented AirStream trough ventilation (optional)
- Precise working with EasyFeed clips and extended infeed table (optional)

LACO D800 flatwork ironer

Working width 1,300–3,300 mm

Top-class performance and efficiency

- Return feed saves on space and personnel
- Excellent finish thanks to flexible, laser-welded trough with large contact angle
- Optimisation of energy costs with model versions with gas and steam heating



Fig.: LACO D800 flatwork ironer, front (infeed side)



Fig.: LACO D800 flatwork ironer, rear side (outfeed side)

LACO D800 flatwork ironer							
Roller diameter [mm]	800	800	800	800	800	800	800
Working width [mm]	1,300	1,750	2,000	2,200	2,500	3,000	3,300
Laundry throughput* at 50% residual moisture EL/G/D [kg/h]	112/112/102	152/152/136	164/164/147	186/186/167	200/200/180	230/230/207	250/250/225
Heating types	EL/G/D	EL/G/D	EL/G/D	EL/G/D	EL/G/D	EL/G/D	EL/G/D
External dimensions H/W/D [mm]	1,615/2,565/2,115	1,615/2,910/2,115	1,615/3,160/2,035	1,615/3,360/2,115	1,615/3,660/2,115	1,615/4,160/2,115	1,615/4,460/2,115

EL = Electric, G = Gas, D = Steam, * Figures as per DIN 11902. In practice, throughput is usually 20-40% below the quoted max. figures. Actual throughput depends on the speed and experience of the operator, the type of laundry being ironed, the way it was sorted prior to ironing, the condition of the trough, and the standard of finish required.

Highlights

- Precise and fast introduction of laundry with feed belts
- High-quality roller padding: Spring padding and two layers of polyester felt (800 g/m²) or optional stainless-steel leaf-spring padding and ARAMID needle felt cloth
- Fast processing of laundry with 60 cm outfeed table
- Highest-quality finish thanks to patented AirStream trough ventilation (optional)
- Precise working with EasyFeed clips and extended infeed table (optional)

Accessories from Miele Professional

for washing machines, tumble dryers and ironers

Good accessories simplify and improve work processes. Plinths, for example, ensure perfect ergonomic working conditions in a laundry when loading and unloading machines. They also simplify the installation of a waste water connection both in the wall and in the floor. Lint filters remove coarse soil from discharged water. Laundry trolleys and tubs make transportation easy and are indispensable in ensuring a smooth work flow.

ProCare Tex from Miele Professional

Detergent and care products for commercial laundries

Wide-ranging expertise for perfect results: ProCare Tex is formulated for use on Miele laundry technology products. Developed on the basis of years of experience in commercial laundry care and close collaboration with application technology experts. The benefits these products offer have been endorsed by Miele's own laundry-care laboratories and have proved their worth in daily use.

ProCare Tex meets various criteria relating to environmental compatibility, by offering for example phosphate-free detergents, a chlorine-free bleach based on oxygen and by avoiding the use of micro-plastics throughout. Users therefore contribute to better water quality and reduce volumes of waste.









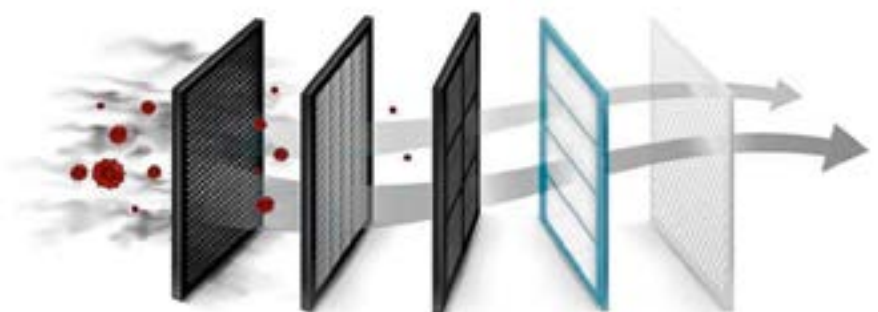
Miele Air Control air purifier

Clean air made by Miele.

Breathe that long-awaited sigh of relief! AirControl from Miele makes living and working together a more pleasant experience once again. With its 5-stage filtration system, Miele's powerful air purifier provides maximum protection against viruses and reduces the strain caused by fine dust and odours.



With optimised air intake and distribution, AirControl ensures a healthy micro-climate. Automatic programmes allow power settings and operating times to be preset. An integrated sensor which continuously measures CO₂ levels in room air monitors the need for ventilation: The current concentration appears in the display. Easy to operate, mobile, reliable and quiet, AirControl is available in three different versions to provide dependable protection wherever people congregate in closed rooms.



Air purifiers

Miele AirControl

PAC 1045, PAC 1080, PAC 1200



Air purifiers	PAC 1045	PAC 1080	PAC 1200
Max. air throughput [m³/h]	740	1300	3000
Max. recommended room size [m²]	45	80	200
External dimensions H/W/D [mm]	500/500/1270	500/500/1270	700/700/1300

Highlights

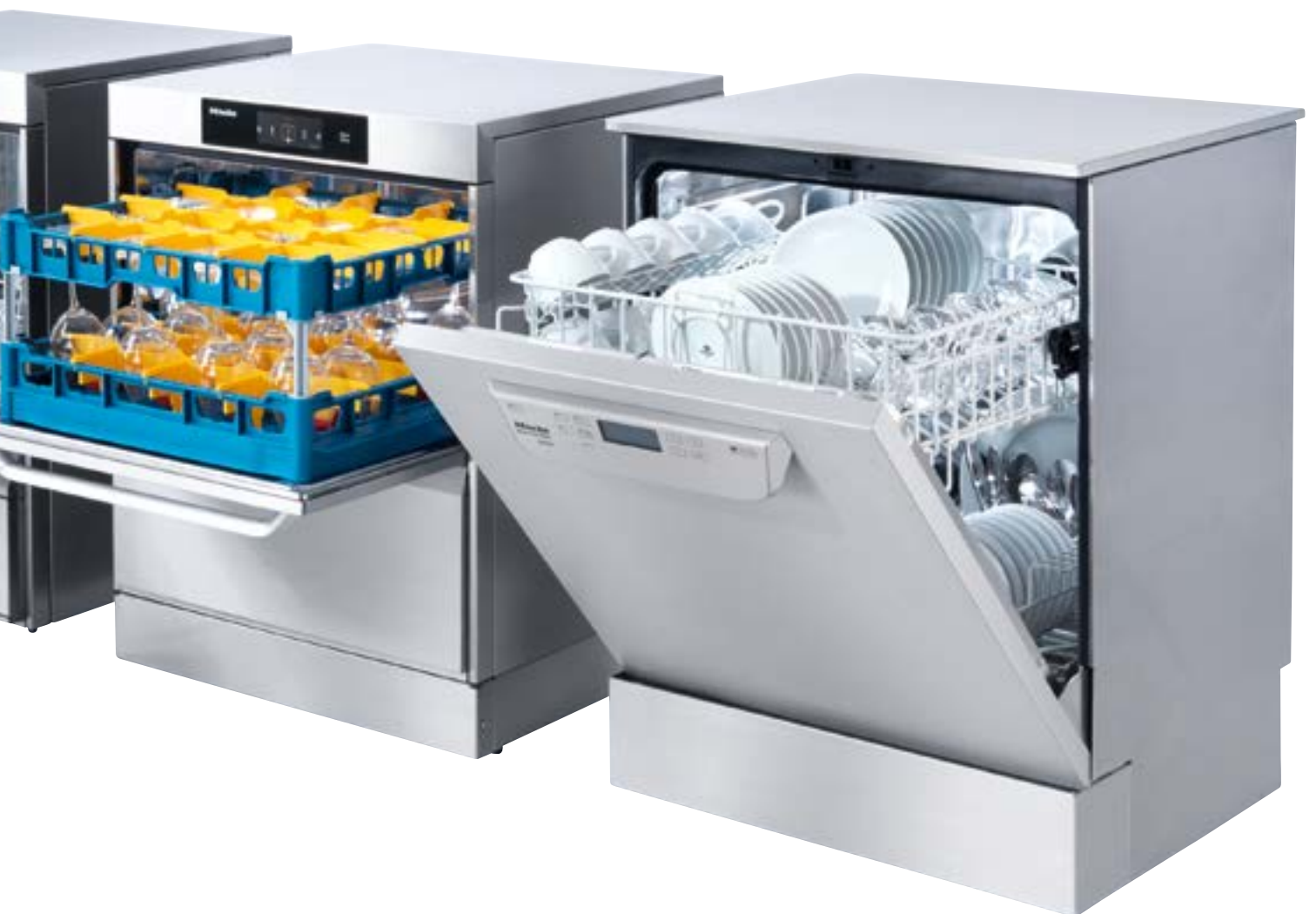
- 5-stage filtration including HEPA H14 rids the air of more than 99.995% of particles such as viruses (including Corona), bacteria, odorous substances, pollen, smoke, etc.
- Integrated CO₂ sensor – enables CO₂-controlled operation, adjusting air throughput to the quality of room air. This results in a significant reduction in sound emissions.
- Miele ThermoControl – The air is heated to 70°C before entering the filter cartridge in order to deactivate relevant pathogens.
- Automatic mode – 3 selectable automatic programmes ensure smooth, uncomplicated operation.
- Manipulation-proof – thanks to PIN code protection and a lockable access hatch, unauthorised persons cannot access the controls.



Dishwashers

Reliable performance as the basis for perfect results

Dishwashers from Miele Professional offer all users right-sized and appropriate machines for their specific applications:
From freshwater dishwashers for those demanding the ultimate in hygiene and ultra-fast undercounter tank models right through to passthrough machines able to cope with maximum throughput in hotels and restaurants.





Simple Plug & Play connection

Supply lead and plug for plug-and-play installation:
SmartBiz dishwashers can be simply plugged into a typical domestic 230 V wall socket.
And off you go!



Comfort baskets

Ample space and maximum flexibility: all items find their rightful place with sufficient space to their neighbours in the well-designed baskets, ensuring that residue is completely removed. The baskets feature hinged rows of spikes and cup racks to accommodate everything from large plates to coffee cups and even expensive wine glasses safely.

Dishwashers

SmartBiz PFD 100 series Fresh water dishwashing system

A stepping stone into the world of professional dishwashing

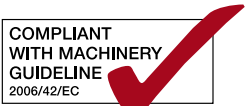
- Ideal for office kitchens, showrooms and clubhouses
- For up to 5 cycles per day



Dishwasher	PFD 100
Construction type	Freestanding unit
Capacity [place settings/cycle]	13
Shortest cycle [mins.]	36
Programmes	8
Water connections	CW or HW, max. 60°C
External dimensions H/W/D [mm]	845/598/600

Highlights

- With baskets as standard
- High-level user convenience through wide range of product features
- Integrated water softener and liquid dispensing connection
- Perfect integration thanks to various model types
- Faster drying thanks to AutoOpen drying support
- Sparkling glassware with Perfect GlassCare
- WiFiConn@ct as standard feature (WiFi connection)





Product highlights

PFD 10x series

Fresh water system/Cycle time as short as 17 minutes

ProfiLine



Very short cycles

Are very short running times and sparkling results important to you? In this case, the new ProfiLine dishwashers are the perfect choice: Connections for hot water and a 3-phase supply, intelligent dishwashing technology and two powerful pumps ensure the shortest possible cycle times, starting at only 17 minutes, combined with optimum cleaning results. Take advantage of innovative features that make your crockery sparkle day after day in the shortest space of time.



Flexible baskets + 3D MultiFlex drawer¹⁾ (only for PFD 103 and PFD 104)

We have improved the cutlery tray on your dishwasher so it can now also accommodate even small items such as espresso cups. The 3D MultiFlex tray¹⁾ has a sunken central section and two side sections. The left-hand section can be pushed to the right to create space for tall glasses in the upper basket. The depth of the right-hand section can be adjusted to easily accommodate large items of cutlery and small items of crockery.



Convenient connectivity

Miele@home facilitates machine connectivity. It provides you with a convenient and model-specific way of controlling and monitoring each of your products via a mobile device and the Miele@mobile app.



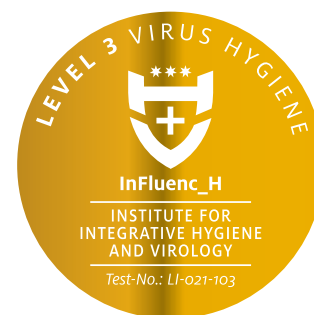
Knock2open (only on PFD 104 SCVi)

Not wizardry, just Miele: Knock2open turns dishwashing into a magical experience while delivering the perfect solution for handleless kitchen designs. Tap the front of fully integrated Miele dishwashers twice and the door will open automatically by about 10 cm thanks to a clever opening mechanism. Convenience you can enjoy every day.



AutoOpen assisted drying²⁾

For dry crockery in next to no time. Even challenging load items such as plastic crockery are dry when unloaded. Thanks to automatic door opening at the end of the cycle, the drying process starts automatically without the need for any manual intervention on the part of the user.



Effective against viruses – scientifically proven

According to the InFluenc_H – Institute for Integrative Hygiene and Virology, cleaning with dishwashers from the PFD 10x series using Miele's ProCare Shine 11 OB and 12 GC cleaning agents removes enveloped and non-enveloped viruses (e.g. coronavirus, influenza, or noroviruses) in the Intensive and Hygiene programmes, as well as enveloped viruses (excluding Hepatitis B) in the Short and Universal programmes, even if load items are difficult to reprocess.

¹⁾ European patent EP 2433549B1

²⁾ European patent EP 2120671B1

*Minimum requirements: Android 4.2+/iOS 9+

Dishwashers

ProfiLine PFD 10x series Fresh water dishwashing system

A stepping stone into the world of professional dishwashing

- Entry-level models for office kitchens, showrooms, legal practices
- For up to 5 cycles per day



Dishwasher	PFD 101	PFD 101 U	PFD 101 i
Construction type	Freestanding unit	Undercounter unit	Integrated unit
Capacity [place settings/cycle]	13	13	13
Shortest cycle [mins.]	17	17	17
Programmes	8	8	8
Water connections	CW or HW, max. 60°C	CW or HW, max. 60°C	CW or HW, max. 60°C
External dimensions H/W/D [mm]	845–880/598/600	805–870/598/570	805–870/598/570

Highlights

- Standard with ExtraComfort basket version (PFD 101, PFD 101 U/i, PFD 102 i)
- High-level user convenience through wide range of product features
- Integrated water softener and liquid dispensing connection
- Perfect integration thanks to various model types
- Faster drying thanks to AutoOpen drying support
- Sparkling glassware with Perfect GlassCare
- WiFiConn@ct as standard feature (WiFi connection)



ExtraComfort baskets
(PFD 101 and PFD 102)



Dishwashers

ProfiLine PFD 10x series Fresh water dishwashing system

Dishwashing in style at a professional level

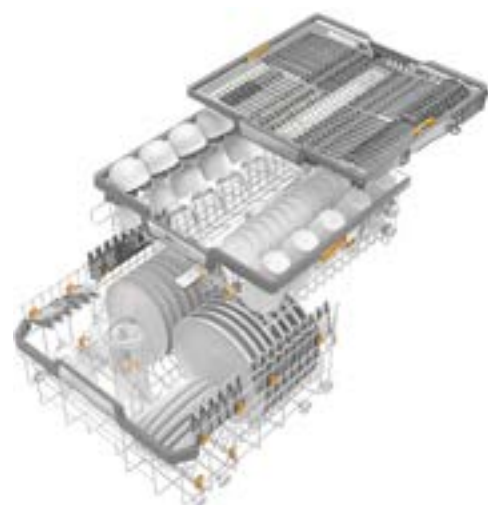
- Entry-level models for office kitchens, showrooms, legal practices, cookery studios and private households
- For up to 5 cycles per day
- Simpler loading thanks to BrilliantLight chamber lighting



Dishwasher	PFD 102 i	PFD 103 SCi XXL	PFD 104 SCVi XXL
Construction type	Integrated unit	Integrated unit	Fully integrated unit
Capacity [place settings/cycle]	13	14	14
Shortest cycle [mins.]	17	17	17
Programmes	8	8	8
Water connections	CW or HW, max. 60°C	CW or HW, max. 60°C	CW or HW, max. 60°C
External dimensions H/W/D [mm]	805–870/598/570	845–910/598/570	845–910/598/570

Highlights

- Standard with MaxiComfort basket version incl. 3D Multiflex drawer (PFD 103 SCi XXL, PFD 104 SCVi XXL)
- High-level user convenience through wide range of product features
- Integrated water softener and liquid dispensing connection
- Perfect integration thanks to various model types
- Faster drying thanks to AutoOpen drying support
- Sparkling glassware with Perfect GlassCare
- Perfect integration into handleless kitchens (PFD 104 SCVi XXL)
- WiFiConn@ct as standard feature (WiFi connection)



MaxiComfort baskets
(PFD 103 and PFD 104)

COMPLIANT
WITH MACHINERY
GUIDELINE
2006/42/EC





Product highlights

PG 80xx series

Fresh water system/Cycle time as short as 5 minutes



Sparkling results in no time

Are very short running times and sparkling results important to you? If so, dishwashers from Miele Professional are the perfect choice: Connections for hot water and a 3-phase supply, intelligent dishwashing technology and a powerful heater pump ensure optimum programme durations and cleaning results. Take advantage of innovative features that make your crockery sparkle day after day in the shortest space of time.



For optimum drying results

It takes just an additional 8 minutes* to dry items made from plastic**. Virtually all load items can be put into storage or used again immediately once the programme has finished. Thanks to Dry+ drying which extracts moist hot air from the chamber, replacing it with fresh room air, short cycles and dry crockery need no longer be a contradiction in terms in commercial dishwashing.



Optimum dispensing and loading

The integrated dispenser pump facilitates precise and fully automatic dispensing, thereby simplifying daily work. Thanks to this integrated approach, support is provided discreetly and without taking up additional space.



Top-class hygiene

Dishwashers operating on the fresh water principle take in fresh water for each phase of the wash cycle. A thorough final rinse is carried out at a temperature adjusted to the load items. This process ensures perfect dishwashing results and a very high standard of hygiene that significantly exceeds the requirements for commercial dishwashers.



Economical and efficient

Cost-cutting the environmental way: Miele Professional dishwashers excel in terms of extremely low consumption and are acclaimed for maximum efficiency. The aim at the product design stage is to achieve perfect dishwashing results by using recyclable materials and no more water, energy and detergent than is absolutely necessary.



Perfect results on all levels

500 × 500 mm plastic baskets can be used on 2 levels in Miele Professional dishwashers. An optional stainless steel carrier must be used in the upper basket. The basket supplied as standard is used as the carrier on the lower level. The three spray arms allow perfect cleaning results to be achieved on both rack levels.

* The longer running time is determined by a number of different factors, including the electrical connection and the materials from which items in the load are made, for example.

** The extent to which the load is dried depends on both its material and its shape.

Dishwashers

PG 80xx model series

Fresh water system

First-class dishwashing results combined with benefit of speed

- Ideal for hotels, restaurants, clubs, schools, bistros, cafés and catering businesses
- Cleaning performance: Up to 456 plate/h or 24 baskets/h
- Fresh water system for all-round hygiene



Dishwasher	PG 8055 (U)	PG 8056 (U)* / DOS	PG 8096 (U)* / DOS
Theoretical capacity [plates/baskets/h]	225/15	456/24	456/24
Shortest cycle [mins.]	8	5	5
Programmes	11	13	13
'Dry+' drying	-	-	•
Water connections	CW or HW, max. 65°C	CW and HW, max. 65°C	CW and HW, max. 65°C
External dimensions Undercounter H/W/D [mm]	820-880/598/580	820-880/598/580	820-880/598/580
External dimensions Freestanding H/W/D [mm]	835-895/598/580	835-895/598/580	835-895/598/580

Highlights

- Highly efficient cleaning performance on two levels
- Thorough and gentle on account of load-specific programmes
- Integrated water softener and liquid dispensing connection
- Optimum drying results thanks to Dry+ system (PG 8096)
- Available as freestanding and countertop units
- Undercounter unit for installation under a worktop

Dishwashers

PG 80xx model series

Fresh water system

First-class dishwashing results for enhanced hygiene

- Perfect for care and nursing homes, hospitals and child-care facilities
- High-performance programmes with high final rinse temperatures
- Fresh water system for all-round hygiene



Dishwasher	PG 8059 (U)* / DOS	PG 8099 (U)* / DOS	PG 8057 TD (U)* / DOS
Theoretical capacity [plates/baskets/h]	456/24	456/24	456/24
Shortest cycle [mins.]	5	5	5
Programmes	13	13	13
'Dry+' drying	-	•	-
Water connections	CW and HW, max. 65°C	CW and HW, max. 65°C	CW and HW, max. 65°C
Aerosol steam condenser	•	-	•
Max. final rinse temperature [°C]	85	85	93
External dimensions Undercounter H/W/D [mm]	820-880/598/600	820-880/598/580	820-880/598/600
External dimensions Freestanding H/W/D [mm]	835-895/598/600	835-895/598/580	835-895/598/600

Highlights

- Highly efficient cleaning performance on two levels
- Thorough and gentle on account of load-specific programmes
- Optimum drying results thanks to Dry+ system (PG 8099)
- Thermal disinfection at 93°C held for 10 minutes (PG 8057 TD)
- Integrated water softener and liquid dispensing connection
- Increased user convenience thanks to AutoOpen/AutoClose door function
- Available as freestanding and countertop units
- Undercounter unit for installation under a worktop
- Use of plastic baskets possible on two levels together with optional stainless-steel supports

Glassware washer

PG 80xx model series

Fresh water system

Glassware specialist for sparkling results

- Perfect for hotels, restaurants, wineries and catering businesses
- Specifically designed for washing high-quality glassware
- Fresh water system for all-round hygiene



Dishwasher	PG 8058 U /DOS
Theoretical capacity [glasses/cutlery items/baskets/h]	340/1,950/24
Shortest cycle [mins.]	5
Programmes	13
Water connections	CW and HW, max. 65°C and fully/partially demineralised water*
Aerosol steam condenser	•
Max. final rinse temperature [°C]	85
External dimensions Undercounter H/W/D [mm]	820-880/598/600

Highlights

- Gentle glassware programmes operating at reduced temperatures
- Perfect GlassCare: A sparkling finish and gentle treatment thanks to perfectly adjusted water hardness
- Connection for fully or partially demineralised water in final rinse
- Basket configuration using standard or plastic baskets
- Increased user convenience thanks to AutoOpen/AutoClose door function
- Can be installed as an undercounter unit, optional freestanding installation



Riedel recommends Miele Professional dishwashers





Product highlights

PTD 70x series

Tank system/Shortest cycle 47 seconds



Perfect results combined with reduced operating costs

Thanks to load-specific programmes, top-class cleaning results are combined with the gentle care of loads. Programme parameters are optimised, allowing the adjustment of times, spray pressure and temperatures. The innovative spray arms reach into all corners of the hygiene chamber, ensuring top-class efficiency. Interference factors which might impair results, e.g. blockages preventing the rotation of the spray arms or a clogged filter, are detected in good time and warnings are issued.



Excellent user convenience

Thanks to a robust full touch display, the dishwasher is as intuitive to operate as a smartphone. The bulk of daily work is carried out using the easy-to-use single-knob controls, whereby the colour-coded indicator provides information on the current status and programme progress. Where needed, additional information can also be called up and adjustments made at the display.



Wide range of dispensing options

Miele offers ideal dispensing options to suit all on-site conditions*. Versions available include models with internal pumps and siphons for external canisters, integrated tanks and dispenser pumps where there is a lack of space for separate canisters and even a version without any dispensing connections (PG 703 only).



Always the right grade of water

Dishwashers with integrated reverse osmosis water treatment guarantee brilliant results and produce sparkling glasses and spotless cutlery without the need for manual polishing. The optional water softener ensures perfect results, using detergent sparingly and extends the life cycle of a tank dishwasher.



Simple and ergonomic

Automatic hood opening not only makes daily handling processes easier – it also airs crockery and cutlery so that it can start to dry.



Effective against viruses – scientifically proven

* According to certification issued by the InFluenc_H – Institute for Integrative Hygiene and Virology, cleaning with undercounter tank dishwashers in programmes 1, 2 and 3 using Miele's ProCare Shine 10 A and 10 GC cleaning agents removes enveloped viruses including not only the coronavirus, for example, but also noroviruses and adenoviruses.

Dishwashers

PTD 70x series

Tank system

Workhorses behind the bar

- Glass washers and bistro washers designed for restaurants, guesthouses and quick-service restaurants
- Fast and efficient tank dishwashing system



Commercial tank dishwashers	PTD 701	PTD 702
Max. theoretical capacity [baskets/h]	77	65
Shortest cycle [secs]	47*	55*
Max. water circulation capacity [l/min]	200	200
Basket dimensions DxW [mm]	400 x 400	500 x 500 / 500 x 530
Water connection	CW or HW, max. 60°C	CW or HW, max. 60°C
External dimensions (incl. height-adjustable feet, without detergent tanks) H/W/D [mm]	725–760/460/617	725–760/600/617

Highlights

- Maximum cleaning performance PTD 701 up to 1,532 glasses/h**
- Maximum cleaning performance PTD 702 up to 3,207 glasses/h or 1,170 plates/h**
- Thorough and gentle on account of load-specific programmes
- High-level cleanliness thanks to multi-stage filtration system
- Intuitive programme controls with full-touch colour display
- Perfect sparkle thanks to integrated reverse osmosis system (optional)
- Internal dispenser pumps and siphons speed up work (optional)
- Can be built under

* The data refers to the shortest programme in each case with the 'Short' option.

** In the model version with internal reverse osmosis, the maximum theoretical total capacity is reduced to 40 baskets/h.
PG 701: 800 glasses/h, PG 702: 1,960 glasses/h

Dishwashers

PTD 70x series

Tank system

The all-rounder in the kitchen

- Multi-purpose dishwasher to meet the diverse needs of restaurants, hotels, schools, small businesses, catering operations, quick-service restaurants and canteens
- Particularly deep chamber for trays and containers (PTD 704)
- Fast and efficient tank dishwashing system



Commercial tank dishwashers	PTD 703	PTD 704
Max. theoretical capacity [baskets/h]	65	65
Shortest cycle [secs]	55*	55*
Max. water circulation capacity [l/min]	200	200
Integrated water softener (WES)	Optional	–
Basket dimensions DxW [mm]	500 x 500 / 500 x 530	500 x 500 / 500 x 530 / 500 x 540
Water connection	CW or HW, max. 60°C	CW or HW, max. 60°C
External dimensions (incl. height-adjustable feet, without detergent tanks) H/W/D [mm]	820–855/600/617	820–855/600/651

Highlights

- Max. cleaning performance: 1,170 plates/h
- Thorough and gentle on account of load-specific programmes
- High-level cleanliness thanks to multi-stage filtration system
- Intuitive programme controls with full-touch colour display
- Internal dispenser pumps and siphons speed up work (optional)
- Can be built under

* The data refers to the shortest programme in each case with the 'Short' option.

Dishwashers

PTD 901 series

Tank system

High throughput in the kitchen

- Ideal for hotels, restaurants and canteens
- Tank system for continuous operation



Dishwasher	PTD 901	PTD 901 ECO
Theoretical capacity [plates/baskets/h]	1296/72	1296/72
Shortest cycle [secs]	50*	50*
Max. water circulation capacity [l/min]	300	300
Water connections	CW or HW, max. 60°C	CW
Water softener, max. 60°C / max. water hardness 25°dH	Depending on model	Depending on model
External dimensions H (open)/W/D [mm]	1515 (1995) 635/750	2195 (2195) 635/750

Highlights

- Max. cleaning performance: 1,296 plates/h
- Thorough and gentle on account of load-specific programmes
- Top-class hygiene thanks to high-performance filtration system and integrated water softener (optional)
- Intuitive programme controls with full-touch colour display
- Excellent user convenience thanks to large hood handles and automatic programme start on closing hood
- Streamlined processes with integrated dispenser unit for liquid detergent (optional)
- Versatile installation: Linear passthrough or corner installation
- Ergonomic operation thanks to automatic hood (LIFT version)

Highlights of Eco version

- Top-class efficiency: Waste air and waste water heat recovery reduces energy costs by up to 15%
- Pleasant room micro-climate thanks to integrated steam extraction



Accessories from Miele Professional

For perfect dishwashing results and ergonomics

Accessories from Miele Professional allow dishwashing processes to be integrated into a smooth-running and efficient organisation – particularly in situations where space is at a premium. Many dishwashers from Miele Professional are pre-fitted ex works with an internal water softener. Additional external water treatment systems are available for machines installed in locations with particularly hard tap water and tank dishwashers which do not have their own integrated water softener.

ProCare Shine

Perfectly formulated detergents and rinse aid

The detergents and rinse aid from the ProCare Shine series were developed from the outset for use in Miele dishwashers. With their special formulation, they form the basis of professional crockery care, guarantee ideal machine compatibility, are extremely economical in use and are an inspiration with the spotless results they achieve.

Commercial customers wishing to use environmentally friendly products in their dishwashers will find their product of choice among the three articles with the EU Eco label (ProCare Shine 10 GC liquid detergent: EU Ecolabel: DE/038/063, ProCare Shine 12 GC dishwasher tablets: EU Ecolabel: AT/038/006 and ProCare Shine 40 GC rinse aid: EU Ecolabel: DE/038/066). When using these products in accordance with dispensing recommendations, you will be contributing towards reduced water pollution and a reduction in waste.









Miele Service & Support

Always on hand!

In line with Miele's philosophy of 'Immer besser', we guarantee the highest quality and production standards with our brand 'Made in Germany'. And when it comes to service, Miele Professional stands like none other for uncompromising performance. Even on delivery, we assist with a comprehensive range of services and adjust machine settings to your on-site requirements. Regular monitoring and maintenance by Miele Service guarantees maximum machine safety and durability.

Benefits that pay off on a daily basis:

- Economical: Reliable safeguarding of investments
- Long-termism: Functional spare parts remain available for 15 years after the termination of production
- Rapid response: Blanket service coverage for fast servicing on site

Miele & Cie. KG, Gütersloh
www.miele-professional.com