

ProCare Sure I-PM: Simple visual test for added security



Process security additionally visible at a glance:

ProCare Sure I-PM process indicators provide additional information on processes in washer-disinfectors. This test excels above all in terms of its speed and efficiency.

Single-source supply

Developed for daily use: System4Dent, a new approach to professional instrument reprocessing, meets the highest of standards by addressing all aspects of the instrument reprocessing cycle. The new indicators for additional process monitoring complement Miele's existing system for dental practices.

- **Washing and disinfection:** Innovative washer-disinfectors with individually selectable features.
- **Process chemicals and process indicators:** Tailored process chemicals for the thorough and gentle cleaning of all instruments and indicators for additional process monitoring.
- **Process documentation:** Intelligent documentation software for reproducible and uninterrupted process monitoring
- **Services:** Top Miele quality in providing advice, financing, after-sales service and validation to the highest of standards.



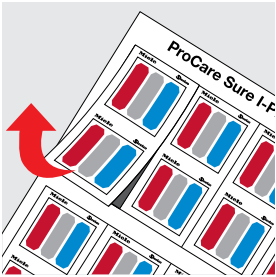


Benefits at a glance:

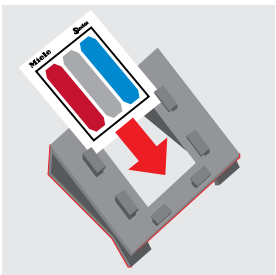
- The test system affords additional everyday security by additionally monitoring machine-based reprocessing in washer-disinfectors.
- Simple positioning in chamber thanks to robust plastic holder.
- Simple before/after comparison based on coloured strips and a reference value
- Fast documentation thanks to self-adhesive indicators
- Proven Miele quality

Article	Description	Mat. no.
ProCare Sure I-PM, indicator sheets	6 sheets of indicators x 16 double indicators per box, plus instructions on use	11 577 000
ProCare Sure H-01, holder	1 packaging unit with robust plastic holder with embossed Miele logo	11 576 830
ProCare Sure I-PM, starter pack	2 sheets of indicators x 16 double indicators per box, incl. 2 plastic holders & instructions on use	11 577 150

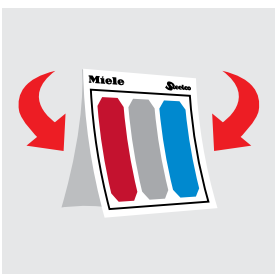
Brief overview: Five easy steps



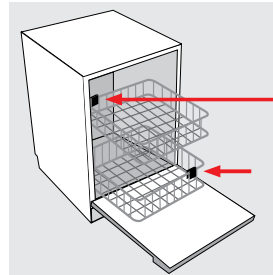
1. Tear off a double indicator along the perforations on the sheet. The colour bars should not be contaminated with hand disinfectant or perspiration. The outer margin with the Miele and Steelco logos should be used to handle process indicators.



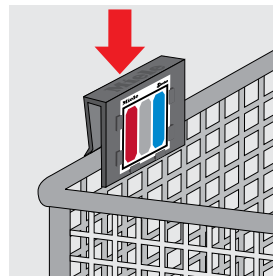
2. Insert a process indicator into the holder so that the company names face upwards and the colour bars face towards the front.



3. Fold along the perforated line when using double indicators. The printed sides should face outwards. For use as individual indicators, separate double indicator along the perforated line.



4. On models with two rack levels, position a process indicator on each of the two levels. When loading on one rack level only, place one indicator at the front and one at the back in diagonally opposite corners.



5. Both holders containing process indicators can be attached to load carriers or to lower and upper baskets.