

**Miele**

I am  
**MasterLine**

Your new dishwasher for unsurpassed hygiene  
and improved care in your everyday working life.



**Miele Professional. Immer Besser.**

# I am there for you.

I am MasterLine, your powerful, durable and efficient dishwasher. I am designed to rise to the challenges of commercial dishwashing and promise to reduce your workload in the hustle and bustle of everyday life.

Want spotlessly clean and hygienic dishes ready for use again quickly?

No problem!

Modern Miele technologies, intuitive touch controls and cycle times of only 6 minutes\* produce outstanding results, streamline processes and, with each wash cycle, leave you more time for what really counts: Working with the people you are there for.

## I am ready.

I take care of the dishwashing so that your residents, children, patients or guests get more of your attention:

- ✓ **Care and nursing homes**
- ✓ **Schools and child care facilities**
- ✓ **Hospitals and clinics**
- ✓ **Hotels, restaurants and wineries**





Very short cycles of only 6 minutes\*



Special-purpose programs



Intuitive touch controls



New convenience and safety features



Flexible basket design



Networking with Miele MOVE (not yet available)



\* Cycle time dependent on on-site connection. 6 minutes when connected to 208/240 V 60 Hz and 149°F | 65 °C hot water. PFD 401 and PFD 404 only.

# I am your cleaning specialist.



**My smart fresh water system, high final rinse temperature of 185°F | 85 °C\* and specially developed hygiene programs ensure that excellent results are achieved in the shortest of times. That makes me the ideal choice for care and nursing homes, child-care facilities and hospitals where the highest levels of cleaning performance and hygiene are needed.**

## **I am a hygiene guard.**

High standards of hygiene have never been so important – in particular in hospitals and nursing homes. I remove 99.999% of most bacteria – even in the 'Rapid' program with a cycle time of only 6 minutes! What's more, strains of virus\*\*, such as Corona or Norovirus, don't stand a chance with me.

\* Maximum temperatures depend on the model.

\*\* In programs Hygiene plus or Hygiene (depending on model), more than 99.9% of enveloped and non-enveloped viruses (e.g. Corona, influenza and Noro viruses) are removed in combination with Miele ProCare Shine 10 A, 11 OB and 12 GC detergents. Detergent availability may vary by region.



**I am a drying specialist.**

AutoOpen assisted drying dries your dishes and plastic items fast. Plates, cups and cutlery are ready for use again in next to no time. Time-consuming hand drying? Not with me!

**I am a lipstick remover.**

Removing persistent coffee and tea stains and even lipstick without a trace? Nothing is simpler than that! Thanks to coordinated dishwashing technology, I remove soil and stains that are difficult to remove by hand.



# I am your time saver.

**Sparkling dishes available in an instant: Intelligent dishwashing technology, simple connection to a hot water supply and a powerful heat pump allow the high temperatures needed for optimum cleaning results to be reached in the shortest of times.**

**Thanks to intuitive touch controls, new convenience functions and a flexible basket design, I make light work of huge piles of dishes.**



**6 mins.**

## **I am ready in 6 minutes.**

Pushed for time? No problem! In the 'Rapid' program, I produce exemplary cleaning results within only 6 minutes\*. This means you can benefit from up to 40 cycles per day with ease. Next one, please ...

## **I am intuitive to control.**

The control set M Touch Flex provides fast access to favorite programs and allow key settings to be adjusted to individual needs – intuitively, thanks to symbols and display text in 32 languages.

The color display offers additional convenience: By tapping and swiping, you can alter program names and watch illustrative how-to sequences explaining all aspects of the process.

Simple, safe, convenient!



*M Touch Flex*



\* Cycle time dependent on on-site connection. 6 minutes when connected to 208 /240 V 60 Hz and 149°F | 65°C hot water. PFD 401 and PFD 404 only.



**I am a safety instructor.**

I am equipped with new functions for exceptional dishwashing results and a long service life: My door lock protects against unauthorized access during a running program and my secure filter monitoring prevents potential damage by stopping food residue from accessing the water circuit.

**I am a capacity increaser.**

Large volumes of dishes several times a day? Thanks to my two levels and my flexible design, I offer plenty of space for cups, plates and cutlery. Whether glasses, pots and pans or salad bowls: The optimized design of my baskets guarantees more space, a secure hold and ergonomic operation.



**MasterLine**

# I am your cost reducer.

## Fully optimized dishwashing:

With flexible and customized parameters, automatic dispensing and connectivity to Miele MOVE\* I help maximize efficiency to reduce costs throughout my entire life. Plus, I am particularly easy to install and commission.

**40** X  
cycles per day

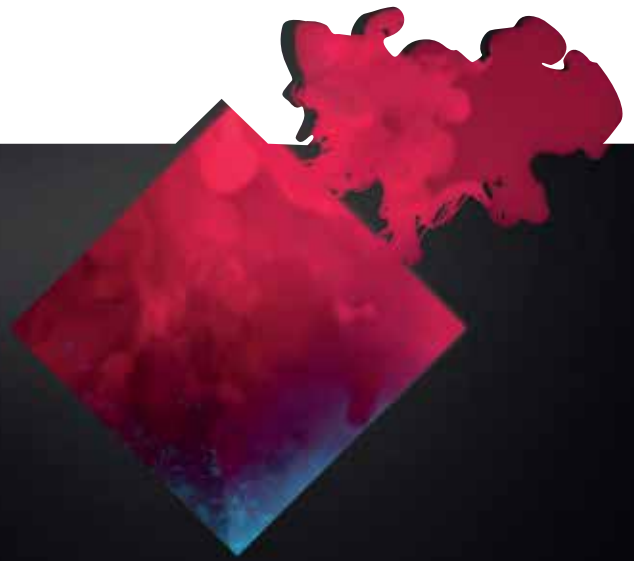
## I am designed for 40 cycles per day.

Thanks to special-purpose programs, short cycles and durable components, I make light work of up to 40 program cycles a day. An ideal solution for hotels and restaurants, offices and schools in need of having to run many cycles each day.

## I am connected.

Linked to Miele MOVE\*: Thanks to my connectivity, I am able to document all program cycles and provide support in optimizing processes. An intuitive dashboard and direct service interfaces help accelerate and improve processes. Never before was the reprocessing of dishes, glassware and cutlery as transparent, efficient and professional. Available soon in the USA.

\* Availability may vary by region.



Miele  
**MOVE**



**I am easy to install.**

Practical hose clips for water and power connections as well as convenient height adjustment from the front simplify installation in recesses and tall units.

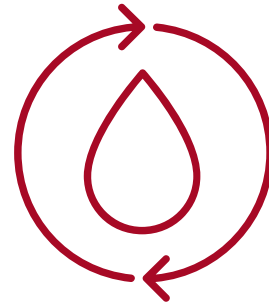
This means that I fit into any run of kitchen cabinets with ease.



# I am your sustainability driver.

**Thinking ahead pays dividends:**

**I use durable components made from recyclable materials and deploy efficient technologies such as automatic dispensing in order to save water, electricity and detergent with each cycle.**



**28,000**  
**cycles tested**

**I am built to last.**

Uninterrupted use, persistent residues, different types of dishes: I have been tested for 28,000 cycles and happily rise to the enormous challenges of commercial dishwashing. Quality manufacturing and intelligent technologies ensure the same results whether it is the first cycle or after thousands of cycles.

**I am a solution provider.**

Alongside optimized results, I offer many other benefits that come with being a Miele Professional customer. We provide you with comprehensive advice on our machines and gladly support you with our reliable service, tailored maintenance contracts, practical accessories and consumables such as chemicals and detergents.

**I am compliant with commercial use.**

Occupational safety first: To protect your staff as they go about their daily work, I am fully compliant with the demands of the EU Machinery Directive.



# I am flexible.

## MasterLine

Features	PFD 401 U Speed Plus*	PFD 404 U Hygiene	PFD 408 U Hygiene Pro
<b>Controls</b>			
M Touch Flex	✓	✓	✓
<b>Programs and performance</b>			
Shortest cycle [mins.]	6	6	15
Plate capacity (plates/h)	380	380	152
No. of programs	11	12	4
Max. final rinse temperature [°F   °C]	158   70	185   85	185   85
Modifiable program names	✓	✓	✓
<b>Features</b>			
AutoOpen/AutoClose		✓	✓
Door lock (code protected if required)	✓	✓	✓
Filter monitoring	✓	✓	✓
Steam condenser		✓	✓
<b>Dispenser systems</b>			
Combination door dispenser	✓	✓	✓
Door salt container	✓	✓	✓
Connection for external dispenser module	2	2	2
<b>Machine dimensions</b>			
External dimensions H   W   D [in]	32 1/4 + 2 3/8   23 9/16   22 13/16	32 1/4 + 2 3/8   23 9/16   23 7/16	32 1/4 + 2 3/8   23 9/16   23 7/16
External dimensions H   W   D [mm]	820-880   598   580	820-880   598   595	820-880   598   595
<b>Water connection (max. 65 °C, max. 60° dH)</b>			
No. of water connections	2	2	2
<b>Electrical connection</b>			
2 AC 208V version NEMA L6-30P	12066560   61040130NAM	12066570   61040430NAM	
2 AC 240V version NEMA L6-30P	12066590   61040135NAM	12066600   61040435NAM	
3 AC 208V version NEMA L15-20P			12066580   61040830NAM
3 AC 240V version NEMA L15-20P			12066610   61040830NAM

All models in stainless steel.

\*PFD 401 U available in the USA only.

