

# Product overview PRO Series

**Miele Professional. Immer Besser.**





# Contents

Foreword ..... 3

Sustainability ..... 4 - 5

PRO series for greater performance ..... 6 - 7

**Washing machines**

Little Giants ..... 8 - 14

**Dryers**

Little Giants ..... 15 - 19

**Dishwashers**

ProfiLine ..... 20 - 27

**Glossary**

Abbreviations, symbols, patents ..... 28



Find all information here:  
<https://www.miele.com.au/professional/>

# Never be satisfied with less: Systems from Miele Professional



With Miele Professional, you are choosing top-class quality. This applies not only to our machines which reliably live up to expectations on a daily basis and give rise to the great trust professional users place in the Miele brand. Miele's proverbial quality goes far beyond this.

As a company now run by its fourth-generation proprietors, Miele remains true to its responsibility to its products and processes, its employees and business partners and towards conserving natural resources. This is reflected in choice materials as well as in the design and production of our machines. Clients benefit from innovations 'Made in Germany' which set standards throughout the industry as well as from a product design which has received multiple awards for ergonomics and functionality, and from low running costs.

Reliability and responsibility form the bedrock of Miele's entrepreneurial activities and find expression in many different ways. Carefully matching systems from Miele Professional cover a wide range of requirements and offer the peace of mind of an efficient and award-winning service network.

Miele Professional stands for reliable, durable products, high-class cleaning results and comprehensive customer service. For you as a professional user, there is simply no reason to be satisfied with less!

*Markus Miele Reinhard Zinkann*

Dr. Markus Miele

Dr. Reinhard Zinkann

Executive Director and Co-Proprietor  
Miele & Cie. KG

Executive Director and Co-Proprietor  
Miele & Cie. KG



# 'Immer Besser.'

## Why sustainability is so important to us.

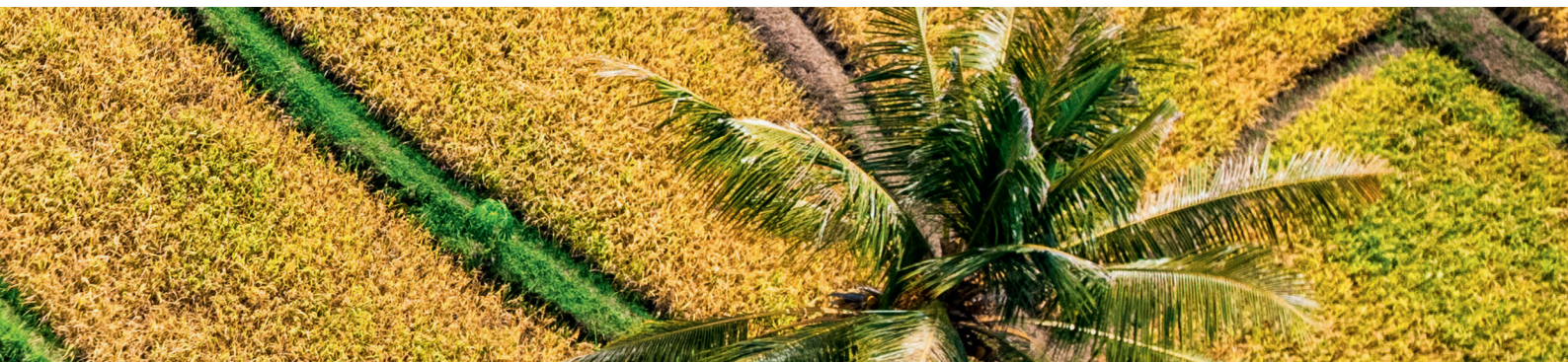


Our planet is experiencing far-reaching changes — changes which are only just starting to impact us. We all bear responsibility for a better and more sustainable future — from large multinational companies right down to the smallest family units.

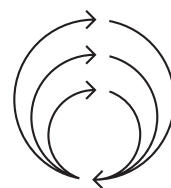
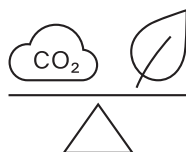
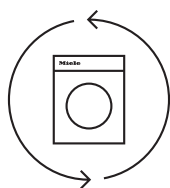
'Immer Besser' stands for our conviction of being forever better in everything we do. It motivates us time and time again to develop better, more intelligent machines so that the households and businesses that use them can be more sustainable — from one generation to the next.



For our planet –  
the only home we have.



Saving our common home is a race against time. That's why we keep on setting ourselves ambitious targets and are continuously expanding our commitment. With these promises, we intend to continue along the path we have already embarked on:



### Create sustainability at every level

We are continually working towards making sustainability an essential component of every phase of the product life cycle – throughout the entire value creation chain and, in particular, during use by our customers.

### Produce products that leave no traces

It is our intention to develop the best products and services with the least possible impact on the environment – with the aim of them being completely CO<sub>2</sub> neutral.

### Avoid waste, we give old products new life

Our aim is to create a circular value creation chain with net-zero waste, in which all the materials used in our machines are returned to the cycle at the end of a product's life.



PRO series for greater performance





Every job needs a professional.

From boutique hotel to hairdresser or large family: wherever the need for reprocessing stretches regular appliances to their limits, solutions from Miele Professional offer the necessary performance, efficiency and hygiene. This allows you to concentrate on what is important to you.









# Washing machines

Little Giants / Performance

Load capacity 7-8 kg / M Select controls

## Powerful, fast and versatile

Little Giants have stood for fast and efficient performance over decades. Hardly any bigger than a typical domestic appliance, these washing machines reliably meet the needs of users faced with having to run several wash cycles per day and remove stubborn stains.



## Short cycles

Thanks to their particularly short programme cycles, laundry turnaround times are incredibly short.



## Durability

These robust commercial washing machines are built to run for 30,000 hours. Technical details such as the stainless-steel flange produced by Miele or the low-vibration Profi Eco motor stand for reliability for many years to come.

## Particularly efficient

Washing huge mountains of laundry with top A-rated energy efficiency combined with low water and detergent consumption is not only gentle on the environment, it also goes easy on your finances.

COMPLIANT  
WITH MACHINERY  
GUIDELINE  
2006/42/EC





# Washing machines

Little Giants / Performance

Load capacity 8 kg / M Touch Flex



## PERFORMANCE PLUS

Technical data	PWM 908
<b>Performance data</b>	
Load capacity [kg]	8
Honeycomb drum, drum volume [l]	73
Max. spin speed [max. rpm]	1,600
g-factor	704
Residual moisture with cold rinse/with warm rinse [%]	48/45
<b>Controls/programmes</b>	
M Touch Flex	•
Standard programmes	•
Special programmes	•
Delay start, max. 96 h	•
<b>Efficiency and sustainability</b>	
WELS Rating:4.5 stars, 67 litres, 8kg rated capacity, with Cottons <40°C program, registration number C01773	
Energy Efficiency Rating	4.5 star
Specific water consumption for cold-water connection [l/kg]	6.40
Specific energy consumption for cold-water connection [kWh/kg]	0.13
Specific water consumption for hot water connection [l/kg]	6.00
Specific energy consumption for hot water connection [kWh/kg]	0.06
Water consumption with cold water connection [l]	51.0
Energy consumption with cold water connection [kWh]	1.05
Programme duration in minutes with cold water connection	69
Water consumption with hot water connection [l]	48.0
Energy consumption with hot water connection [kWh]	0.50
Programme duration in minutes with cold water and hot water connection	59
<b>Water connections</b>	
1 x cold water ½" with ¾" threaded union / 1 x hot water ½" with ¾" threaded union	• / •
Drain pump (DP) DN 22 / Drain valve (DV) DN 70	• / •
<b>Standard electrical connection</b>	
Heating type Electrical	•
Electrical connection	230V~ 50HZ
Heater rating [kW]	2.65
Total connected load [kW]	2.85
Fuse rating [A]	16
<b>Dispenser system</b>	
3-compartment front dispenser	•
CapDosing	•
Flexible dispensing adapter (optional)	•
Maximum number of connections for liquid dispenser pumps [number]	6
Empty sensor	•
<b>Dimensions, weight</b>	
External dimensions H/W/D [mm]	850/605/714
Weight, net [kg]	103
Installation as washer-dryer stack possible	o



Technical data	PWM 908
<b>Construction type</b>	
Lid lotus white, fascia stainless steel, front and side panels lotus white (LW)	•
Lid with stainless steel, control panel stainless steel, sides in Lotus White and front in stainless steel (SST)	o
Door opening [Ø] [mm]	300
Door opening angle [°]	167
Door hinge right	
Maintenance-free synchronous motor	•
Honeycomb drum with perforated drum rear panel	•
<b>Programme duration</b>	<b>CW / HW</b>
Cottons 60°C [mins.]	69/59





# Little Giant / Performance wash programmes

Series	Little Giants Performance Plus
Designation	PWM908
Controls	M Touch Flex

Standard programmes	
Cottons	●
Minimum iron	●
Delicates	●
Express / Mini	●
Bedding and towelling	●
Shirts	●
Dark garments	●
Denim	●
Woollens	●
Silks	●
Separate rinse	●
Starch	●
Clean machine	●
Drain/Spin	●
Cottons 60°C / 40°C	●
Sport	
Sportswear / Sport Indoor	●
SportMicrofibre	●
Trainers	●
Curtains	●
Hard items	●
Outdoor	
Down-filled items	●
Outerwear / Outdoor sportswear	●
Proofing	●
Hairdressers/Spas	
Towels	●
Towels plus	●
Capes	●
Hotels	
Bed linen	●
Table linen	●
Kitchen linen	●
Home textiles	
Lightweight curtains	●
Pillows	●
Bedspreads	●
Down bedding / Down duvets	●
Synthetic bedding	●
Workwear	
Oil/fat Special / Grease and fat	●
Dust/Flour Special / Flour	●
Intensive wash / Workwear	●
Disinfection	
Disinfection 85°C	●
Disinfection 70	●
Disinfection 60°C	●
Disinfection 40°C	●
Programmable function	
Maintenance wash Hygiene	●
Laundry (CFPP 01-04)	
Disinfection 71C	●
Disinfection 65C	●
MRSA	●

Series	Little Giants Performance Plus
Designation	PWM908
Controls	M Touch Flex

WetCare	
WetCare Sensitive	●
WetCare Silks	●
WetCare Intensive	●
WetCare Disinfection	●
WetCare Hygiene	●





#### **M Touch Flex control system**

- High-level user convenience through full-touch colour display
- Simple and intuitive operation at the touch of a fingertip or by swiping
- All information as plain text, 31 languages

#### **Connectivity**

- Communication interface for standardised processes to simplify the daily work of clients, service technicians and partner organisations across all Miele Professional laundry machines.

Type description	Front	Load Capacity	Mat. no.	Article no.	EAN
PWM 908 [EL DP]	SST	8 kg	11289940	51908353AUS	4002516259718

Type description		Mat. no.	Article no.	EAN
APCL 001	Washer-dryer stacking kit, stainless steel, for secure installation of washer-dryer stacks.	11167420	59590001D	4002516142478
APCL 005	Box plinth, 30 cm high for ergonomic loading and unloading of the washing machine and tumble dryer.	11318800	59590010D	4002516228349
APCL 085	Open plinth, height 30 cm for ergonomic loading and unloading of the washing machine and tumble dryer.	11776570	59590085D	4002516433606





# Dryers

Little Giants / Performance

Load capacity 8 kg / M Touch Flex

## Powerful, fast and versatile

Little Giants have stood for fast and efficient performance over decades. Hardly any larger than typical domestic appliances, these dryers cater for installations running several cycles per day and requiring the gentlest of laundry care and defined residual moisture values.

## Drying system to meet every need

A vented dryer offers the benefit of particularly short drying cycles of as little as 42 minutes, ensuring that textiles are ready for use again in next to no time. Heat-pump dryers save up to 50% energy compared with conventional condenser dryers and are independent of site conditions.



## PerfectDry – Spot-on drying

Thanks to Miele's exclusive PerfectDry sensor drying technology, all garments and textiles are precisely dried. This applies whatever the mineral content as the system adjusts its values automatically to the hardness of the tap water used.

## Patented heat exchanger filtration system on heat-pump dryers

A patented grille filter represents an additional layer of filtration and protects the heat exchanger against particles in process air. This way, it retains the energy efficiency and capacity of the system.





# Dryer

Little Giants / Performance

Load capacity 8 kg / M Touch Flex



## PERFORMANCE PLUS

Technical data	PDR 908 HP [EL]
<b>Performance data</b>	
Load capacity [kg]	8
Honeycomb drum, drum volume [l]	130
Drying system	Heat Pump
Exhaust duct	-
Drain connection DN 10	•
<b>Features</b>	
Porthole door	•
Low-maintenance filter system	•
Large-surface filter	-
Drum lighting	•
<b>Controls/programmes</b>	
M Touch Flex	•
Delay start, max. 24 h	•
Programmability	programmable
User interface	Residual moisture controlled
<b>Efficiency and sustainability</b>	
Energy efficiency rating	7 stars
Recycling rate in %	95
Contains fluorinated greenhouse gases	•
Hermetically sealed system	•
<b>Drive / Electrical connections</b>	
Brushless synchronous motor	•
Electrical connection	230V~ 50HZ
Total connected load in kW	1.44
Fuse rating in A	10
Heating [kW]	3
Total rated load [kW]	3.24
Fuse rating [A]	1x16
<b>Dimensions, weight</b>	
External dimensions H/W/D [mm]	850/596/717
Weight, net [kg]	71
Installation as washer-dryer stack possible	o
<b>Programme duration</b>	
Normal dry Cottons/Polycottons programme [mins.]	79/67

\*Contains FCs, hermetically sealed; Coolant R134a, Coolant quantity 0.61 kg, ODP of coolant: 1430 kg CO<sub>2</sub> e, ODP of machine: 872 kg CO<sub>2</sub> e,

# Drying programmes - Little Giants / Performance

Series	Little Giants Performance
Designation	PWM908
Controls	M Touch Flex
<b>Standard programmes</b>	
Cottons 	•
Cottons PRO	•
Cottons	•
Minimum iron	•
Express	•
Delicates	•
Shirts	•
Denim	•
Woollens	•
Silks	•
Towelling	•
Smoothing	•
Automatic plus	•
Microfibrés	•
Timed drying / Cool air	•
Basket – Std. temperature/Low Temperature	•
<b>Sport</b>	
Sportswear	•
Outdoor	•
Proofing	•
Reactivation	•
<b>Home textiles</b>	
Down bedding	•
Synthetic bedding	•
Large items	•
<b>Hygiene</b>	
Cottons hygiene	•
Minimum iron hygiene	•
Timed drying warm air, hygiene	•
<b>WetCare</b>	
WetCare Sensitive	•
WetCare Silks	•
WetCare Intensive	•



# Dryer

Little Giants / Performance

Load capacity 8 kg / M Touch Flex



## Highlights: Heat-pump dryers

- Flexible installation without the need for vent ducting
- Energy efficiency rating A++:  
Up to 50% energy savings compared with a conventional condenser dryer
- Patented heat exchanger filtration system
- Patented condensate drainage
- Professional-grade cycle times

## M Touch Flex controls

- Conveniently select wash programmes
- machine functions with a fingertip via the clear-text touch display

Type description	Front	Load Capacity	Mat. no.	Article no.	EAN
PDR 908 HP [EL]	SST	8 kg	11198830	52908251AUS	4002516213581

Type description		Mat. no.	Article no.	EAN
APCL 001	Washer-dryer stacking kit, stainless steel, for secure installation of washer-dryer stacks.	11167420	59590001D	4002516142478
APCL 005	Box plinth, 30 cm high for ergonomic loading and unloading of the washing machine and tumble dryer.	11318800	59590010D	4002516228349
APCL 085	Open plinth, height 30 cm for ergonomic loading and unloading of the washing machine and tumble dryer.	11776570	59590085D	4002516433606

## Notes









# Dishwashers

Reliable performance as the basis for perfect results

Dishwashers from Miele Professional offer all users right-sized and appropriate machines for their specific applications:

Fresh water dishwashers meet the highest demands on hygiene and offer maximum throughput in hotels and restaurants.



# ProfiLine dishwashers

Cycle time of as little as 28 minutes



## Frequent dishwashing, huge mountains of crockery

Breakfast, lunch, meetings, appointments with customers, events – in many companies, there is no end of events where large quantities of crockery needs to be washed and ready for use in next to no time. Whether in office kitchens, legal practices or agencies, or in showrooms, clubhouses and kitchen studios – with their short cycle times lasting as little as 28 minutes, ProfiLine dishwashers represent the professional solution for routinely spotless results.

## Perfect performance and design

Even in private homes with high expectations in terms of performance and design, ProfiLine dishwashers are the perfect fit. With connections for hot water and a 3-phase supply, these machines come with the promise of maximum efficiency. Models with an XXL chamber and an integrated cutlery tray are able to gently but thoroughly wash and clean up to 14 standard place settings.

COMPLIANT  
WITH MACHINERY  
GUIDELINE  
2006/42/EC



Miele ProfiLine dishwashers are fully compliant with safety regulations governing commercially used dishwashers (machines used outside a private home) as embodied in the EU Machinery Directive.

# Product highlights

## ProfiLine



### Very short programme running times

Are very short cycle times and sparkling results important to you? In this case, the new ProfiLine dishwashers are the perfect choice: intelligent dishwashing technology and two powerful pumps ensure the shortest possible cycle times, starting at only 28 minutes, combined with optimum cleaning results. Take advantage of innovative features that make your crockery sparkle day after day in the shortest space of time.



### Flexible baskets + 3D MultiFlex drawer<sup>1)</sup>

(now for PFD 103 SCi and PFD 104 SCVi)  
We have improved the cutlery tray on your dishwasher so it can now also accommodate small items such as espresso cups. The 3D MultiFlex tray<sup>1)</sup> has a sunken central section and two side sections. The left-hand section can be pushed to the right to create space for tall glasses in the upper basket. The depth of the right-hand section can be adjusted to easily accommodate large items of cutlery and small items of crockery.



### Convenient connectivity

Miele machines can be connected to a network. This provides you with a convenient and model-specific way of controlling and monitoring each of your machines via the Miele App.



### Knock2open (only for PFD 104 SCVi)

Not wizardry, just Miele: Knock2open turns dishwashing into a magical experience while delivering the perfect solution for handleless kitchen designs. Tap the front of fully integrated Miele dishwashers twice and the door will open automatically by about 10 cm thanks to a clever opening mechanism. Convenience you can enjoy every day.



### AutoOpen assisted drying<sup>2)</sup>

For dry crockery in next to no time. Even challenging load items such as plastic crockery are dry when unloaded. Thanks to automatic door opening at the end of the cycle, the drying process starts automatically without the need for any manual intervention on the part of the user.



### Proudly GreenTag Certified

We are proud to announce that the latest ProfiLine commercial dishwashers PFD 101, PFD 101i, PFD 103 SCi XXL and PFD 104 SCVi XXL have been certified as Global GreenTag GreenRate™ Level C along with a PlatinumHEALTH™ HealthRATE™ certification from GreenTag's Product Health Declaration™ (GreenTag PHD™) program. Certification was granted after a thorough assessment with respect to their environmental, health, and ethical and social responsibility attributes. Miele have become the first appliance manufacturer to meet GreenTag's GreenRate™ certification with some of its products, and the assessment required full disclosure and evaluation of every product component and stages of the manufacturing process.

<sup>1)</sup> European patent EP 2433549B1

<sup>2)</sup> European patent EP 2120671B1

\*Minimum requirements: Android 4.2+/iOS 9+



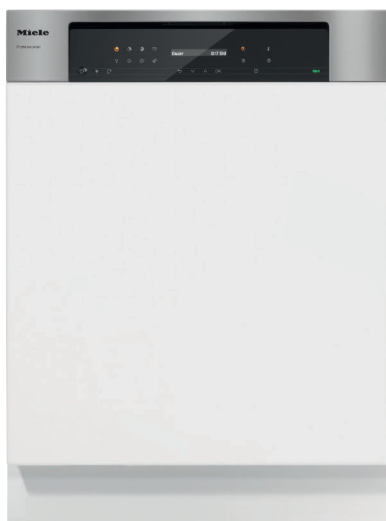
# PFD 101 dishwasher

Frontloaders/Fresh water system

## ProfiLine



Illustrated: PFD 101



Illustrated: PFD 101 i

### PFD 101

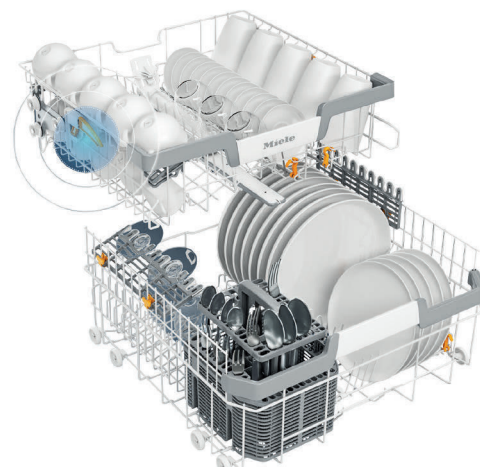
- Entry-line model for office kitchens, showrooms and clubhouses

### Plus

- Shortest cycle 28 mins.
- With baskets as standard
- High-level user convenience through wide range of product features

### WELS Rating

- PFD 101 Freestanding Dishwasher WELS Rating: 4.0 stars, 13.1 liters, 14 place settings with ECO program, registration number DO2540
- PFD 101i Integrated Dishwasher WELS Rating: 4.0 stars, 13.1 liters 14 place settings with ECO program, registration number D02541
  - Material number FYI: 11807700 – 10 AMP version



ExtraComfort baskets  
(PFD 101)

Type description	Front - Fascia	Baskets	Mat. no.	Article no.	EAN
PFD 101	BW - PA CLST	with baskets	11605790	61010100AUS	4002516367079
PFD 101 i	WF - PA CLST	with baskets	11605800	61010101AUS	4002516367086

Type description		Mat. no.	Article no.	EAN
APFD 101	Dishwasher installation kit for perfect installation in a tall unit with an additional top box.	11714430	67747101D	4002516420750
APFD 102	Dishwasher installation kit for ideal installation in a tall unit with additional built-in appliance niche.	11714440	67747102D	4002516420767

# Technical data

## ProfiLine

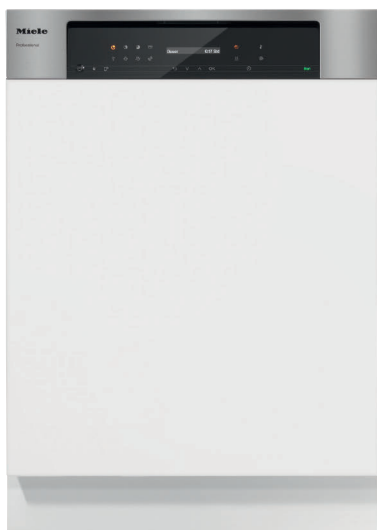
Dishwasher	PFD 101	PFD 101 i
Freestanding unit with worktop	•	-
Built-under machine without worktop	-	• Integrated
<b>Control panels</b>		
CleanSteel	-	•
Straight/slanted	• / -	• / -
<b>Capacity</b>		
Max. wash cycles per day	5	5
Short programme running time	28 mins.	28 mins.
<b>Convenience</b>		
Time left display/Delay start up to 24 h	• / •	• / •
Miele App / Miele MOVE	•	•
AutoClose	•	•
MultiLingua	•	•
EcoFeedback	•	•
BrilliantLight	-	-
Knock2open	-	-
Liquid dispensing with G 80 ProfiLine Flex module possible	•	•
Sound emissions in operation dB(A) re 1 pW	46	46
<b>Wash programmes</b>		
Number of dishwashing programmes	8	8
Intensive cleaning	Intensive/Hygiene 75°C	Intensive/Hygiene 75°C
Fast, simple cleaning	Short/Universal 65°C	Short/Universal 65°C
Gentle cleaning of glasses	Glasses 50°C	Glasses 50°C
Label programme	ECO 52°C	ECO 52°C
Programmes for special requirements	Cold/Pre-wash, Plastics	Cold/Pre-wash, Plastics
<b>Quality of results</b>		
Perfect GlassCare	•	•
Fresh water dishwasher	•	•
Active condensation drying	•	•
AutoOpen drying	•	•
Tested virucidal efficacy	•	•
<b>Efficiency and sustainability</b>		
Energy efficiency rating	4 star	4 star
Water consumption in l/Electricity consumption in kWh in ECO programme	12.0 / 0.930	12.0 / 0.930
Energy consumption per 100 wash cycles in ECO programme	93	93
Consumption value in kWh in the ECO programme with hot water connection	0.6	0.6
Hot water connection	•	•
<b>Basket design</b>		
Cutlery loading	Cutlery basket	Cutlery basket
Basket design	ExtraComfort	ExtraComfort
FlexCare glasses holder/FlexCare cup rack	2/2	2/2
Number of standard place settings	13	13
<b>Safety</b>		
Waterproof system/filter indicator light	•/•	•/•
In-operation indicator light	Display	Display
Door locking option	•	•
Fully compliant with Machinery Directive (2006/42/EC)	•	•
<b>Electrical connections</b>		
Total rated load in kW/voltage in V/fuse rating in A	7.3/3N AC 400 50 Hz/16	7.3/3N AC 400 50 Hz/16
Convertible by Miele Service, chargeable	2.1/1N AC 230 V 50 Hz/10-16	2.1/1N AC 230 V 50 Hz/10-16
Length of water inlet/drain hose/supply lead in mm	1500/1500/1700	1500/1500/1700
Min-max. door front weight in kg	-	4-11
<b>Dimensions/weights</b>		
External dimensions H/W/D [mm]	845/598/600	805/598/570
Width of building-in niche [mm]	600	600
Weight, net [kg]	60	42
Plinth return [mm]	-	30-95
• = Standard, - = Not available		



# PFD 103 SCi XXL / PFD 104 SCVi XXL dishwashers

Frontloaders/Fresh water system

## ProfiLine



Illustrated: PFD 103 SCi XXL



Illustrated: PFD 104 SCVi XXL

### PFD 103 SCi XXL / PFD 104 SCVi XXL

- Integrated models for office kitchens, showrooms and clubhouses

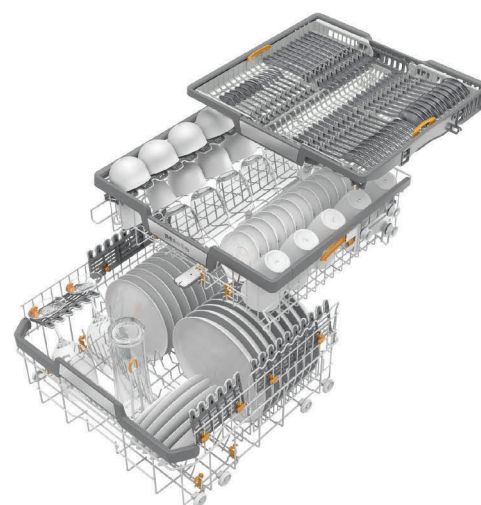
#### Plus

- Shortest cycle 28 mins.
- Fitted with baskets and 3D MultiFlex drawer as standard\*
- High-level user convenience through wide range of product features

\* PFD 103 SCi XXL and PFD 104 SCVi XXL models feature a cutlery tray

#### WELS Rating

- PFD 103 SCi XXL WELS Rating: 4.5 stars, 13.2 litres, 15 place settings with ECO program, registration number D02542
- PFD 104 SCVi XXL WELS Rating: 4.5 stars, 13.2 litres, 15 place settings, with ECO program, registration number D02543



MaxiComfort baskets  
(PFD 103 and PFD 104)

Type description	Front - Fascia	Baskets	Mat. no.	Article no.	EAN
PFD 103 SCi XXL 15-16A (3.2kW) *	WF - PA CLST	with baskets	11605810	61010304AUS	4002516367093
PFD 103 SCi XXL 10A (2.1kW)	WF - PA CLST	with baskets	11807780	61010314AUS	4002516446118
PFD 104 SCVi XXL 15A (3.2kW) *	WF	with baskets	11605820	61010405AUS	4002516367109
PFD 104 SCVi XXL 10-16A (2.1kW)	WF	with baskets	11807790	61010415AUS	4002516446125

# Technical data

## ProfiLine

Dishwasher	PFD 103 SCi XXL	PFD 104 SCVi XXL
Integrated unit	•	•
<b>Control panels</b>		
CleanSteel	•	•
Straight/slanted	- / •	Fully integrated
<b>Capacity</b>		
Max. wash cycles per day	5	5
Short programme running time	28 mins.	28 mins.
<b>Convenience</b>		
Time left display/Delay start up to 24 h	• / •	• / •
Miele@home	•	•
AutoClose	•	•
MultiLingua	•	•
EcoFeedback	•	•
BrilliantLight	•	•
Knock2open	-	•
Liquid dispensing with G 80 ProfiLine Flex module possible	•	•
Sound emissions in operation dB(A) re 1 pW	45	45
<b>Wash programmes</b>		
Number of dishwashing programmes	8	8
Intensive cleaning	Intensive/Hygiene 75°C	Intensive/Hygiene 75°C
Fast, simple cleaning	Short/Universal 65°C	Short/Universal 65°C
Gentle cleaning of glasses	Glasses 50°C	Glasses 50°C
Label programme	ECO 52°C	ECO 52°C
Programmes for special requirements	Cold/Pre-wash, Plastics	Cold/Pre-wash, Plastics
<b>Quality of results</b>		
Perfect GlassCare	•	•
Fresh water dishwasher	•	•
Active condensation drying	•	•
AutoOpen drying	•	•
Tested virucidal efficacy	•	•
<b>Efficiency and sustainability</b>		
Energy efficiency rating	4 star	4 star
Water consumption in l/Electricity consumption in kWh in ECO programme	12.0 / 0.950	12.0 / 0.950
Energy consumption per 100 wash cycles in ECO programme	95	95
Consumption value in kWh in the ECO programme with hot water connection	0.6	0.6
Hot water connection	•	•
<b>Basket design</b>		
Cutlery loading	3D MultiFlex tray	3D MultiFlex tray
Basket design	MaxiComfort	MaxiComfort
FlexCare glasses holder/FlexCare cup rack	4/2	4/2
Number of standard place settings	14	14
<b>Safety</b>		
Waterproof system/filter indicator light	•/•	•/•
In-operation indicator light	Display	Display
Door locking option	•	•
Fully compliant with Machinery Directive (2006/42/EC)	•	•
<b>Electrical connections</b>		
Total rated load in kW/voltage in V/fuse rating in A	7.1/3N AC 400V 50 Hz/16	7.1/3N AC 400V 50 Hz/16
Convertible by Miele Service, chargeable	2.1/AC 230V 50 Hz/10-16	2.1/AC 230V 50 Hz/10-16
Length of water inlet/drain hose/supply lead in mm	1500/1500/1700	1500/1500/1700
Min-max. door front weight in kg	4-11	5-12
<b>Dimensions/weights</b>		
External dimensions H/W/D [mm]	845/598/570	845/598/570
Width of building-in niche [mm]	600	600
Weight, net [kg]	52	51
• = Standard, – = Not available		



## Abbreviations, symbols and patents

Abbreviations	
AB	Airing bar
AD	Adapter
ADH	Cover
ADR	Adapter, round for masks
ADS	Adapter, tapered for masks
AE	Stainless steel
APCL	Accessories Professional Commercial Laundry
APWM	Accessories Professional Washing Machines
APDR	Accessories Professional Dryers
APRI	Accessories Professional Rotary Ironers
ASK	Connection box
AV	Drain valve
AW	White
Basic	No softener, no dispenser pump
BDE	Data acquisition module
BHM	Mask holder
BM	Protective bag for masks
BS	Protective bag for buckles
BSF-RU	Flowmeter kit
BSH	Hard water valve
BSK	Payment system connection
BSS	Peak-load negotiation connection
BSS-RU	Peak-load negotiation
BW	Brilliant white
BWR	Laundry return feed
BWS	Vapour and foam venting kit
C	Condenser
CKSL	Chipcard key
CKSP	Memory card
CLST	Clean Steel
COP	Coin-op version
dir.	Direct
D	Steam/steam heating
DD	Detergent dispenser
DOS	Dispenser pump
DP	Drain pump
DUAL	Dual heating
DV	Drain valve
ECO	Waste air heat recovery
ED	Stainless steel
EH	External heating
EL	Electric/electric heating
ELD	Electrical steam valve
ERP	Extraction with perforated roller
FFK	Lint filter box
FLT	Flexible laundry feed
FRZ	Flow meter
FT	Conventional drum
G	Gas/gas heating
GE	Feed belts

HP	Heat pump
HW	Hot water
i	Integrated
IB	Feed belts
IBH	Operating data software
IGS	Side panels in iron grey
ind.	Indirect
KPM	Compressor
KW	Cold water:
KW	Cold water 15°C
L	Leaf-spring padding
LP	Drain pump
LW	Lotus white
MF	Multifunction module
MK	With baskets
MRT	Trough cleaning cloth
MSG	Vapour venting fan
MSS	Silencer
ND	Low-pressure steam
NIRO	Stainless-steel front
OB	Octobblue
OK	Excl. baskets
PA	Panel
PDR	Professional dryer
PFD	Product designation - Dishwasher
PG	Product designation - Dishwasher
PIB	Professional steam ironing system
PND	Pneumatic steam valve
PP	Programme packages
PRI	Professional flatwork ironer
PT	Professional dryer
PTB	Profitronic B controls
PTB Plus	Profitronic B Plus controls
PW	Professional washing machine
PWM	Professional washing machine
PWT	Professional washer-dryer stack
RF	Return feed
RF	Laundry return feed kit
RH	Reduced heater rating
RH	Electric heating, reduced
RO	Reverse osmosis
ROP	Moisture-controlled programmes
S	Steam heating
SBDE	Operating data acquisition
SCi	Integrated dishwasher with 3D+ cutlery tray/3D Multiflex tray
SCVi	Fully integrated dishwasher with 3D+ cutlery drawer / 3D Multiflex drawer
Self-Service	Model version for coin-op laundries

Set TE	Partial demineralisation set
Set VE	Full demineralisation set
SI	Steam heating, indirect
SL	SlimLine series
SMR	Trough-cleaning starter kit
SST	Stainless steel
STW	Steel wool padding
TK	Dryer basket
TOP	Time-controlled programmes
U	Built-under unit
UG	Box plinth
UO	Open plinth
US	Plinth with drawer
VZS	Galvanised side panels
WB	With baskets
WES	Water softener
WF	Without front
WI	Weighing system
WKS	Wall bracket
WM	Token
WOB	Excl. baskets
WP	Heat pump
WP	Weighing plinth (washing machines)
WRG	Water recovery
WTV	Washer-dryer stacking kit
WW	Hot water 70°C, data gathered in accordance with EN 60456
XKM	Communication module
XL	Octopus XL series
XXL	Extra large chamber
<b>Symbols</b>	
•	Standard
o	Optional
-	Not available
<b>Miele patents/patent nos.</b>	
EasyFold outfeed table: Patent EP 1 724 388 B1	
Air Recycling Plus: Patent EP 1 682 715 B1	
Liquid dispensing adapter: Patent EP 1 835 063 B1	
Condensate drain tube: Patent EP 2 532 779	
Conditioning of cleaning cloths (in mop machines): Patent DE 100 56 889 C1	
Honeycomb drum: Patent EP 2 390 399 B1	
Honeycomb drum 2.0: Patent EP 2 700 744 B1	
Filter: EP2273005	
StreamClean: Patent EP 2 460 929 B1	
Deep filter: EP2107155	
Pre-spin: Patent EP 2 003 236 B1	
Heat exchanger filter system: EP2532779	

Miele Australia Pty Ltd  
Level 4 - 141 Camberwell Rd  
Hawthorn East VIC 3123  
Australia

Phone:  
Australian Customers: 1300 731 411  
New Zealand customers: 0800 002 593

[professional.sales@miele.com.au](mailto:professional.sales@miele.com.au)  
[www.miele.com.au/professional](http://www.miele.com.au/professional)