

**Miele**

# PRO Series Price List Australia and New Zealand

Effective 01.01.2025



Miele Professional

Immer Besser

## Never be satisfied with less: Systems from Miele Professional



With Miele Professional, you are choosing top-class quality. This applies not only to our machines which reliably live up to expectations on a daily basis and give rise to the great trust professional users place in the Miele brand. Miele's proverbial quality goes far beyond this.

As a company now run by its fourth-generation proprietors, Miele remains true to its responsibility to its products and processes, its employees and business partners and towards conserving natural resources. This is reflected in choice materials as well as in the design and production of our machines. Clients benefit from innovations 'Made in Germany' which set standards throughout the industry as well as from a product design which has received multiple awards for ergonomics and functionality, and from low running costs.

A handwritten signature in blue ink that reads "Markus Miele".

Dr. Markus Miele

Executive Director and Co-Proprietor  
Miele & Cie. KG

A handwritten signature in blue ink that reads "Reinhard Zinkann".

Dr. Reinhard Zinkann

Executive Director and Co-Proprietor  
Miele & Cie. KG

Reliability and responsibility form the bedrock of Miele's entrepreneurial activities and find expression in many different ways. Carefully matching systems from Miele Professional cover a wide range of requirements and offer the peace of mind of an efficient and award-winning service network.

Miele Professional stands for reliable, durable products, high-class cleaning results and comprehensive customer service. For you as a professional user, there is simply no reason to be satisfied with less!

**Miele**

## PRO Series for Greater Performance

Every job needs a professional. From boutique hotel to hairdresser or even large family: wherever the need for reprocessing stretches regular appliances to their limits, solutions from Miele Professional offer the necessary performance, efficiency, and hygiene. This allows you to concentrate on what's important.





## Longevity is the Ultimate Sustainability

### Longevity

Rigorous testing ensures excellent reliability and durability for the daily work routine. PRO Series Little Giants washing machines are tested to 30,000 hours – that's the equivalent of 8 cycles a day, 7 days a week for over 10 years.

PRO Series SmartBiz 2.0 have been tested for 10,000 cycles or 15,000 hours of operation.

The PRO Series ProfiLine dishwasher range is tested to 12,500<sup>2</sup> wash cycles.



### Hygiene

Our appliances are specifically designed, built and tested to meet the highest of hygiene requirements.

Fresh water dishwashers change the water after each cycle. A thorough final rinse is carried out using a temperature that has been adjusted to the washed items. This process ensures perfect dishwashing results and a very high standard of hygiene.



### Speed

The PWM 908 EL DP washing machine and PDR 908 HP dryer can process large volumes of laundry in a very short space of time. The PWM 908 EL DP washing machine can complete a full 8 kg load of Cottons 60°C in **59 minutes\***, while the PDR 908 HP dryer can dry a full 8kg load in **79 minutes\*\***.

In comparison, domestic laundry appliances would take 318 minutes to wash and dry a 60°C load.\*\*\*

The PRO Series ProfiLine dishwasher range can easily manage piles of domestic dishes, washing 14 place settings on the 'short' programme in just 28 minutes<sup>^</sup> (PFD 101 Freestanding Dishwasher – 15 AMP).



<sup>1</sup>Statements can vary depending on specific product categories and machine capacity.

<sup>2</sup>Our machines undergo intensive testing under laboratory conditions. The actual number of wash cycles may vary depending on actual usage behaviour, maintenance and care of the machine.

<sup>3</sup>Depending on site conditions (temperature of incoming water / electrical connection) values given may vary.

\*Based on a power voltage of 230V~ 50HZ, 16AMP, Cottons 60 °C programme with connection to hot and cold water, hot rinse.

\*\*Based on a power voltage of 230V~ 50HZ, 10AMP, in the Cottons/Normal drying programme.

\*\*\*Based on WWV 980 WPS 9KG Washing Machine, power voltage 230V, 2.300kW, Cottons 60 programme (2:29min) and TWV780 WP HP 9KG Dryer, power voltage 230V, 1.1kW, in the Cottons/Normal drying programme (168 minutes).

<sup>^</sup>Based on 15AMP power connection. Power voltage 230V ~ 50 HZ, 3.2kW.



## Professional Results with Miele Little Giants

Over the past four decades across the world, well over a million Little Giants have earned their place in hotels, healthcare institutions, living accommodation, a wide range of businesses and even homes. With the current generation, we offer a number of innovative technologies and functions for better cleaning performance, economical operation, user convenience and flexibility.

### Washing Machine - Standard DNA



#### Stainless Steel flange

Long service life due to high resistance to aggressive cleaning agents.



#### Honeycomb Drum

For gentle garment care.



#### Durability

Tested to ensure reliability for the daily work routine.



#### EcoSpeed

Patented wash rhythm<sup>1</sup> Intensive cleaning with reduced water consumption due to optimised changes in speed.



#### 3D imbalance monitoring

Reliable moisture removal from wash items thanks to professional 3D sensor technology.



#### CapDosing

Use Miele's portioned capsules when your garments need special treatment.



#### 96 Hour Delay Start

For well-planned laundry care.

### Washing Machine Highlights\*



#### Short cycle times

Premium commercial technology allows you to benefit from the shortest programme cycles.



#### Intensive use

Little Giants are ideal for customers who require more than 3 cycles per day.



#### Programmable controls

Perfect adaptation to suit individual requirements.



#### Add laundry

The door unlocks, so you can add or remove items during the wash programme.\*\*

**All Miele Professional laundry appliances are quality tested to ensure long service life.**

PWM 908 DP SST washing machine

#### WELS 4.5 stars

67 litres, 8kg rated capacity, with Cottons < 40° program, registration number C01773.

#### Energy rating

4.5 stars

- ✓ The doors on our washing machines are opened, closed, locked and unlocked **60,000 times**
- ✓ The detergent dispenser flap on our washing machines is opened and closed **30,000 times**
- ✓ The on/off switch on our washing machines and tumble dryers is tested to operate **100,000 times**
- ✓ Our tumble dryers are tested to **40,000 cycles**
- ✓ The fluff flap on our tumble dryers is opened and closed **10,000 times**. All our tumble dryers' central bearing and support rollers are tested for more than 20,000 hours

\*Statements can vary depending on specific product categories and machine capacity. \*\*It is possible to add laundry within the first few minutes of starting a programme.

<sup>1</sup> European patent: EP 1354997 B1

## Professional Results with Miele Little Giants

Little Giants are ideal for customers who require more than 3 cycles per day and short cycles for extremely fast laundry turnaround. With a simple user interface for a variety of users, these machines feature special-purpose programmes for specific types of soiling and are conveniently 'Plug and Play' – 15 AMP Washing Machine, 10 AMP Heat Pump Tumble Dryer.

### Tumble Dryer - Standard DNA



#### Heat Pump technology

Low temperature, energy efficient and gentle drying.



#### Honeycomb drum

For gentle garment care.



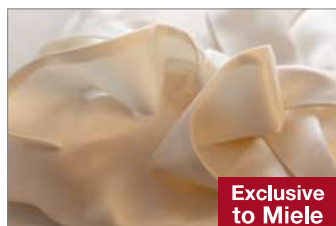
#### Miele Made electronics

Quality, serviceability and peace of mind.



#### Large capacity

Ensures perfect drying results even with large loads.



#### Perfect Dry

Precise drying thanks to mineral sensors.



#### Patented heat exchanger filtration system<sup>4</sup>

For easy cleaning: a low-maintenance filter system protects the heat exchanger from dust particles.



#### LED drum lighting

Perfect illumination of the Honeycomb drum.

### Tumble Dryer Highlights\*



#### 7 Star Energy Rating

Perfectly suited for professional laundry care.



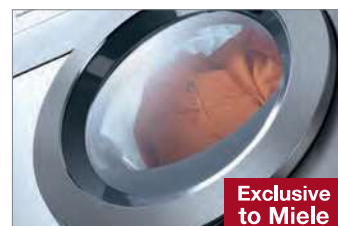
#### Anti-crease

The laundry is tumbled regularly after the end of the programme to protect it from creasing.



#### FragranceDos fragrance system<sup>1</sup>

Miele fragrance flacons perfume your laundry with your favourite scent during drying. The result: fresh laundry with a natural fragrance that lasts for up to 4 weeks.



#### Condensate drainage

Integrated condensation drainage for easy handling.

### Miele Quality

We pride ourselves on ensuring we deliver quality from start to finish and beyond. Whether that's at a product design level or as part of the testing procedures - 'Immer Besser' or 'Forever Better' is what drives us.

WASHING  
MACHINES

TUMBLE  
DRYERS

Tested to 30,000 hours - that's the equivalent of 8 cycles a day, 7 days a week for over 10 years.

Our tumble dryers are tested to 40,000 cycles. The fluff flap on our tumble dryers is opened and closed 10,000 times.

## PWM 908 [EL DP] Washing Machine

Professional washing machine, Little Giants, electric heating, drain pump and target group specific programmes. Capacity 8 kg in 59 minutes.

**Price incl. GST AU \$8,832/ NZ \$10,009**

EAN: 4002516259718 / Article no.: 51908353AUS / Mat. no.: 11289940



Construction type and version	
Construction type	Front-loader, stackable
Range	Performance Plus
Front	Stainless steel
Load in kg	8.0
Drum volume in l	73
Door opening [ø] in mm	300
Door opening angle in degrees	167
Door hinge	right
Maintenance-free synchronous motor	•
Honeycomb drum with perforated drum rear panel	•
Performance data	
Proven hygiene	•
Specific water consumption for cold water connection in l/k	6.40
Specific energy consumption for cold water connection in kWh/kg	0.13
Specific water consumption for hot water connection in l/kg	6.00
Specific energy consumption for hot water connection in kWh/kg	0.06
Water consumption with cold water connection in l	51.0
Energy consumption with cold water connection in kWh	1.05
Programme duration in minutes with cold water connection	69
Water consumption with hot water connection in l	48.0
Energy consumption with hot water connection in kWh	0.50
Programme duration in minutes with cold water and hot water connection	59
Residual moisture with cold rinse in %	48
Residual moisture with hot rinse in %	45
Spin speed in rpm	1,600
g factor	704
Tested operating hours	30,000
Controls	
Contrl system	M Touch Flex
Programmability	Programmable
Max. delay start in h	96
Time left display	•
Programme sequence indicator	•
Language can be selected easily at any time	•
Dispensing	
Detergent drawer	3 compartments
Cap Dosing	•
Flexible dispensing adapter (optional)	•
Maximum number of connections for liquid dispenser pumps [number]	6
Empty sensor	•

Standard electrical connection	
Heating type	Electrical
Electrical connection	230V~ 50HZ
Heater rating in kW	2.65
Total connected load in kW	2.85
Fuse rating in A	15
Water connection/drainage	
Cold water [number]	1x 1/2" hose w/ 3/4" th. union
Hot water [number]	1x 1/2" hose w/ 3/4" th. union
Drain pump	DN 22
Dimensions and weight	
External dimensions, net height in mm	850
External dimensions, net width in mm	605
External dimensions, net depth in mm	714
External dimensions, net depth in mm	940
External dimensions, gross width in mm	660
External dimensions, gross depth in mm	768
Net weight in kg	103
Gross weight in kg	107
Maximum floor loading in N	2820
Emissions data	
Emissions – sound pressure at workplace	<70 dB(A) re 20 µPa
Heat dissipation into the room in MJ/h	1.00
Features	
Heat dissipation into the room in MJ/	•
Commercial shock absorbers	•
Hard-wearing stainless-steel flange	•
Disinfection rinse	•
EcoSpeed	•
Pre-ironing	•
Efficient drum rib technology	•
Temperature monitoring	•
Special heater element	•
Automatic load control	•
Flow meter	•
LED drum lighting, class 1	•
Communication slot	•
Add laundry	•
Machine-independent accessories	•
Efficiency and sustainability	
Recycling rate in %	95
Connection options	
Payment system (optional)	•
Optical interface for service access	•
Peak-load negotiation / energy management (optional)	•
LAN/WiFi module (optional)	•
WiFiConn@ct	•



## PDR 908 HP [EL] Tumble Dryer

Professional heat-pump dryer, Little Giants, with low energy consumption and short running times. Load capacity 8 kg.

**Price incl. GST AU \$6,664/ NZ \$7,557**

EAN: 4002516213581 / Article no.: 52908251 AUS / Mat. no.: 11198830



Construction type and version	
Construction type	Front-loader, stackable
Range	Performance Plus
Front	Stainless steel
Load in kg	8.0
Drum volume in l	130
Drying system	Heat pump
Door opening [ø] in mm	370
Door opening angle in degrees	167
Door hinge	left
Stainless steel honeycomb drum	•
Performance data	
Maximum evaporation capacity in l/hour	2.8
Specific energy consumption in kWh/kg	0.20
Specific energy consumption for Cottons/Normal drying programme with residual at 48 % in kWh/kg	0.20
Specific energy consumption for mixed fibre fabrics/Normal drying with residual moisture at 40 % in kWh/kg	0.17
Programme duration in min.	79
Programme duration for Cottons/Normal drying programme with residual moisture at 48% in minutes	79
Programme duration for mixed fibre fabrics/Normal drying programme with residual moisture at 40 % in minutes	67
Controls	
Control system	M Touch Flex
Programmability	Programmable
User interface	Residual moisture controlled
Max. delay start in h	24
Time left display	•
Programme sequence indicator	•
Language can be selected easily at any time	•

Standard electrical connection	
Heating type	Heat pump
Electrical connection	230V ~ 50HZ
Total connected load in kW	1.44
Fuse rating in A	10
Dimensions and weight	
External dimensions, net height in mm	850
External dimensions, net width in mm	605
External dimensions, net depth in mm	777
External dimensions, net depth in mm	940
External dimensions, gross width in mm	660
External dimensions, gross depth in mm	820
Net weight in kg	72
Gross weight in kg	78
Maximum floor loading in N	920
Emissions data	
Emissions – sound pressure at workplace	<70 dB(A) re 20 µPa
Heat dissipation into the room in MJ/h	3.60
Features	
Intelligent drum reversal	•
Axial airflow	•
Fluff filter in the door	•
Low-maintenance heat exchanger filter system	•
PerfectDry	•
SoftLift drum ribs	•
Gentle tumble function	•
Condensed water drainage	•
Communication slot	•
Drying basket (optional)	•
Drum lighting	•
Machine-independent accessories	•

## Little Giant Washing Machine and Tumble Dryer Accessories



### APCL 001 Washer-Dryer Stacking Kit

Stacking kit, stainless steel. For secure installation as a washer-dryer stack for PWM 908 [EL DP] and PDR 908 HP [EL].

Mat. no.: 11167420

**Price incl. GST AU \$279 / NZ \$309**



### APCL 022 Box Plinth

Box plinth for ergonomic loading and unloading of the washing machine and tumble dryer. Floor bolting not required, instead it has water tanks which are filled exclusively with water.

*Suitable for PRO Series models only.*

- No need to anchor the plinth to the floor
- Safe and stable operation

Mat. no.: 11476830

**Price incl. GST AU \$1,392 / NZ \$1,627**

## Work Smarter Not Harder with SmartBiz 2.0

Your Entry Into the World of Commercial Laundry Care

### Performance



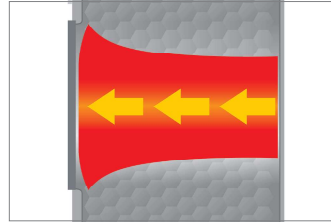
#### Short Programme Cycles

Premium commercial technology allows you to benefit from the shortest programme cycles resulting in only 79 minute Cottons 60 wash cycle and 134 minute drying cycle.



#### PerfectDry system

First-class: the durable ironing. On the basis of a constant residual moisture measurement, the PerfectDry system perfectly dried garments.



#### Outstanding drying results

For perfect drying results, air is passed through the drum according to the principle of longitudinal air flow.



#### Excellent spin performance

Intensive dewatering for high energy efficiency. Very low residual moisture on account of high g-factor.

### User Convenience



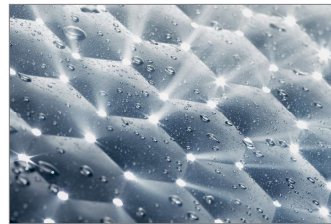
#### Wash2Dry

The cleverly networked laundry care team. Hand in hand: your tumble dryer automatically uses the same programme as your washing machine.



#### Washer-dryer stack

Top performance on a small footprint: a washer-dryer stack takes up less than 0.5 m<sup>2</sup> of valuable floor space.



#### Let there be light

No laundry item is overlooked when unloading thanks to the perfectly lit honeycomb drum.

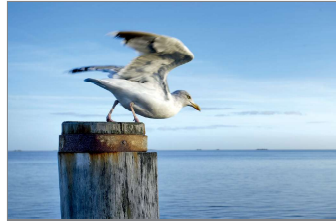
### Hygiene



#### Effective against viruses – scientifically proven

Our washing machines in the SmartBiz series remove more than 99.9 % of all viruses (including coronaviruses).

### Sustainability



#### More sustainable

TPropane as refrigerant for 99.8% reduction in CO<sub>2</sub>\*

\* Model PDR 1108 using 140 g of R290 refrigerant with a GWP of 3 kg CO<sub>2</sub>e compared to model PDR 300 with 310 g of R450a refrigerant with a GWP of 605 kg CO<sub>2</sub>e.



## PWM 1108 EL PWashing Machine

Washing machine, electrically heated commercial quality with a programme running time of 79 min, easy installation..

**Price incl. GST AU \$4,172/ NZ \$4715**

EAN 4002516811305 / Article number 51110801AUS / Material number 12507000



Construction type and version	
Construction type	Front-loader, stackable
Range	Performance Plus
Front	SmartBiz
Load in kg	8.0
Drum volume in l	64
Door opening [ø] in mm	300
Door opening angle in degrees	167
Door hinge	right
Maintenance-free synchronous motor	•
Stainless steel honeycomb drum	•

Performance data	
Proven hygiene	•
Specific water consumption for cold water connection in l/k	6.50
Specific energy consumption for cold water connection in kWh/kg	0.163
Water consumption with cold water connection in l	52.0
Energy consumption with cold water connection in kWh	1.3
Programme duration in minutes with cold water connection	79
Residual moisture with cold rinse in %	49
Spin speed in rpm	1,400
g factor	535
Tested operating hours	15,000
WELS Rating (C02360/1016)	4.5
Energy Rating	4.5

Controls	
Contrl system	DirectSensor 7-segment
Programmability	-
Max. delay start in h	24
Time left display	•
Programme sequence indicator	•
Language can be selected easily at any time	•
Dispensing	
Detergent drawer	3 compartments
Cap Dosing	•

Standard electrical connection	
Heating type	Electrical
Electrical connection	230V~ 50HZ
Heater rating in kW	2.1
Total connected load in kW	2.3
Fuse rating in A	10

Water connection/drainage	
Cold water [number]	1x 1/2" hose w/ 3/4" th. union
Hot water [number]	-

Drain pump	DN 22
------------	-------

Dimensions and weight	
External dimensions, net height in mm	850
External dimensions, net width in mm	596
External dimensions, net depth in mm	636
External dimensions, net depth in mm	944
External dimensions, gross width in mm	660
External dimensions, gross depth in mm	690
Net weight in kg	91
Gross weight in kg	95
Maximum floor loading in N	2820

Emissions data	
Emissions – sound pressure at workplace	<70 dB(A) re 20 µPa
Heat dissipation into the room in MJ/h	1.00

Features	
Hard-wearing stainless-steel flange	•
Special heater element	•
Automatic load control	•
Machine-independent accessories	•
Add laundry function	•
MobileStart function	•
Water+ Function	•
Rinse+ Function	•
Delay Start (max. 24 hours)	•
12 Commercial Programmes	•
Plug and Play Set Up	•
LED drum lighting, class 1	•
Automatic Load Adjustment	•

Efficiency and sustainability	
Recycling rate in %	95

Connection options	
WiFiConn@ct	•
Optical interface for service access	•

## PDR1108HP [EL] Tumble Dryer

Heat-pump dryer meets industry standards with simple and flexible installation without ducting.

**Price incl. GST AU \$3,608/ NZ \$4,100**

EAN 4002516799764 / Article number 52110801AUS / Material number 12507330



Construction type and version	
Construction type	Front-loader, stackable
Range	SmartBiz
Front	Lotus white
Load in kg	8.0
Drum volume in l	120
Drying system	Heat pump
Door opening [ø] in mm	370
Door opening angle in degrees	167
Door hinge	left
Stainless steel honeycomb drum	•
Performance data	
Maximum evaporation capacity in l/hour	2
Programme duration in min.	134
Specific energy consumption for Cottons/Normal drying programme with residual at 48 % in kWh/kg	0.14
Specific energy consumption for mixed fibre fabrics/Normal drying with residual moisture at 40 % in kWh/kg	0.12
Tested operating hours	15000
Programme duration for Cottons/Normal drying programme with residual moisture at 48% in minutes	134
Energy Rating	9

Controls	
Control system	DirectSensor 7-segment
Programmability	-
User interface	Residual moisture controlled
Max. delay start in h	24
Time left display	•
Programme sequence indicator	•
Language can be selected easily at any time	•

Standard electrical connection	
Heating type	Heat pump
Electrical connection	230V ~ 50HZ
Total connected load in kW	1.1
Fuse rating in A	10
Dimensions and weight	
External dimensions, net height in mm	850
External dimensions, net width in mm	596
External dimensions, net depth in mm	636
External dimensions, net depth in mm	940
External dimensions, gross width in mm	660
External dimensions, gross depth in mm	690
Net weight in kg	53.5
Gross weight in kg	58
Maximum floor loading in N	920
Emissions data	
Emissions – sound pressure at workplace	<70 dB(A) re 20 µPa
Heat dissipation into the room in MJ/h	1.79
Features	
SmartBiz heat exchanger filter system	•
Axial airflow	•
Fluff filter in the door	•
Wash2Dry Function	•
PerfectDry	•
SoftLift drum ribs	•
Gentle tumble function	•
Condensed water drainage	•
FragranceDos slot	•
Delay start (max. 24 hours)	•
Drum lighting	•
Machine-independent accessories	•

## SmartBiz Washing Machine and Tumble Dryer Accessories



### APCL 031 Washer-Dryer Stacking Kit

Washer-dryer stacking kit, Lotus White for a space-saving and safe installation of a washer-dryer stack. Suitable for SmartBiz models. 2.5cm height

Mat. no.: 11458220

**Price incl. GST AU \$128 / NZ \$148**



### APCL 028 Washer-Dryer Stacking Kit

Washer-dryer stacking kit, Lotus White with an integrated drawer for a particularly convenient washer-dryer stack. Suitable for SmartBiz models. Plenty of storage space thanks to drawer with push/pull function, 12cm height.

Mat. no.: 11458230

**Price incl. GST AU \$412 / NZ \$498**



### APCL 041 Box Plinth

Plinth with drawer, 35 cm high for ergonomic loading and unloading of the washing machine and tumble dryer.

*Suitable for PRO Series SmartBiz models only.*

- Non-slip liner to prevent contents from sliding around
- Not suitable for stacked installation

Mat. no.: 11477320

**Price incl. GST AU \$848 / NZ \$1,021**



## PRO Series PIB 100 Steam Ironing System

Professional steam ironing system with large water container for prolonged ironing time.

### Performance



#### Large water container

The water container has a capacity of 4.5 l litres and enables around three hours of uninterrupted ironing time.



#### High-quality ironing board cover

First-class: the durable ironing board cover allows steam to penetrate while holding fabric firmly in place.



#### SoftCare iron with patented honeycomb soleplate

Perfect results: steam distribution along the honeycomb channels helps the iron glide smoothly and effectively.



#### Lots of steam

4 bar steam pressure and consistent steam output of 100 g g/min for professional ironing results.

### Convenience



#### Long descaling interval

A special internal diamond-like carbon coating ensures long descaling intervals.



#### Convenient and easy to set up

Ready for use in no time thanks to the patented<sup>3</sup> 1-2 lift system.



#### Powerful handheld steamer

It weighs only half as much as the iron but uses the same steam pressure and steam quantity. The brush attachment raises the fabric fibres and maintains an ideal distance from the garment. The steamer can also be used when the steam ironing system is folded up to save space.

### Hygiene



#### Effective against viruses – scientifically proven

Hygienically clean in 5 seconds: the topical application of steam kills 99.99 %<sup>4</sup> of viruses.

### Sustainability



#### Long service life

Tested to 7,500 operating hours/10 years.

\*Our machines undergo intensive testing under laboratory conditions. The actual operating hours may vary depending on actual usage behaviour, maintenance and care of the machine. 3. Patent: EP 2 169 108 B1 4. - A description of the relevant methodology can be found at the following link: [https://www.miele.com/media/ex/com/Professional/Pruefberichte\\_Virusiegel/2021-09\\_16\\_Pruefbericht\\_PIB\\_100\\_Miele\\_FashionMaster.pdf](https://www.miele.com/media/ex/com/Professional/Pruefberichte_Virusiegel/2021-09_16_Pruefbericht_PIB_100_Miele_FashionMaster.pdf).

## PIB 100 Steam Ironing System

Professional steam ironing system, with large water container for prolonged ironing time and the perfect results.

**Price incl. GST AU \$4,727 / NZ \$5,411**

EAN: 4002516455776 / Article no.: 53100014 AUS / Mat. no.: 11841150



Construction type and version	
Series	Professional
Ironing board cover colour	Anthracite
Patented honeycomb soleplate	•
Multi-layer ironing	•
Min. variable height adjustment with gas pressure stay in mm	830
Max. variable height adjustment with gas pressure stay in mm	1020
Application	
Suitable for domestic households	•
Suitable for hotels and restaurants	•
Suitable for aged care facilities	•
Suitable for commercial laundries	•
Suitable for small businesses	•
Suitable for universities, nurseries and schools	•
Suitable for hospitals	•
Suitable for sports clubs	•
Suitable for beauty salons, spas and fitness centres	•
Suitable for surgeries and dental practices	•
Suitable for the food-processing industry	•
Suitable for chalets and holiday complexes	•
Suitable for state/community care facilities	•
Performance data	
Tested virucidal efficacy	•
Steam pressure in bar	4
Steam quantity in g/min	100
Vertical steam	•
Steam from temperature level	2
Burst of steam in bar	4
Continuous steam in bar	4
Operation with mains water	•
Water container volume in l	4.5
Removable water container	•
Water container can be refilled at any time	•
Tested operating hours	7500
Controls	
Control type	Touch display
Display	1-zeiliges LC-Textdisplay
Fan auto switch on/auto switch off	•
Guided commissioning	•
Guided descaling	•
Automatic descaling	•
Automatic rinsing	•
Choice of display language	•
Control panel with easy-to-understand symbols	•

Standard electrical connection	
Electrical connection	1N AC 220-240V 50/60HZ
Drying class in kW	2.15
Total rated load in kW	2.2
Fuse rating in A	10
Dimensions and weight	
External dimensions, net height in mm	970
External dimensions, net width in mm	470
External dimensions, net depth in mm	1510
External dimensions, height in mm, folded	1280
External dimensions, width in mm, folded	470
External dimensions, depth in mm, folded	402
Max. width of ironing board in mm	405
Max. length of ironing board in mm	1190
External dimensions, gross height in mm	450
External dimensions, gross width in mm	500
Net weight in kg	29
Gross weight in kg	33.3
Net weight of iron in kg	1.6
Emission values	
Heat dissipation into the room in MJ/h	7.92
Features	
Active ironing board (inflation and suction functions)	•
Second fan power level	•
Non-stick soleplate available as an option	•
Patented 1-2 lift system	•
Floor-friendly rollers	•
Ironing board with ComfortZone	•
Storage compartment for iron	•
Storage compartment for mains connection cable and accessories	•
CoolDown function	•
Auto-off function	•
Professional ironing board cover	•
Steam hose holder	•
Test strips for determining water hardness	•
Water boiler with Diamond-Like Carbon coating	•
Steamer available as an option	•
Efficiency and sustainability	
Recycling rate in %	94
Test certificates and symbols	
CE	•
WEEE	•
Complies with Machinery Directive 2006/42/EC	•

## Miele Professional – PIB 100 Steam Ironing System



### PIB 100 STEAM IRONING SYSTEM

#### Technical Specifications

Display	Single-line, plain text
Water tank (l)	4.5
Steam	4.0 bar, 100 g / minute
Ironing surface (W / D mm)	1,190 / 405
External dimensions (H / W / D mm)	970 / 470 / 1,510
External dimensions - folded (H/W/D mm)	1,200 / 470 / 402
Material Number	11841150

### ACCESSORIES AVAILABLE



#### APIB001 Non-stick soleplate

Material No: 11622350

- Ideal for ironing delicate and dark fabrics
- Prevents glossy patches
- Allows you to iron appliques and print



#### APIB003 Commercial-grade ironing table cover

Material No: 11622510

- Heat resistant – helps retain its shape
- Good steam permeability
- Surface offers traction to secure textiles
- Washable at 60 degrees



#### Descaling tablets - 6 pack for PIB 100

Material No: 99501395

- Long Product life cycle
- No chemical deposits after descaling
- Thorough removal of deposits and limescale



## The New ProfiLine Generation of Dishwashers

ProfiLine dishwashers combine the technology of commercial machines designed for durability and speed with the unique user convenience and elegance of Miele domestic G 7000 dishwashers. They are tested to last 12,500 programme cycles,\* ensuring a long and enduring product even when used five times a day. The dishwashers feature eight programmes, including Plastics, Eco and Hygiene.

### Performance



#### Very short programme cycles

**28 minutes** for PFD 101 (Based on electrical connection of AC 230V 50HZ, 3.2kW, 15-16A) and **36 minutes** for PFD 101i, PFD 103 SCi, PFD 104 SCVi XXL (Based on electrical connection of AC 230V 50 HZ, 2.1kW, 10-16A).



#### Fresh water system

Fresh water after every cycle for perfectly clean results and a very high standard of hygiene.



#### Brilliant GlassCare

Gentle glasscare cycle with temperatures of up to 45°C, helps reduce cloudy film build up.



#### Dishwashing Professionals

Perfect solution for large amounts of crockery needed to be washed quickly and thoroughly.

### Convenience



#### Flexible basket design

Height adjustable baskets adapt for all types of dishes. 3D MultiFlex tray for small dishes (depending on model).



#### AutoOpen assisted drying<sup>1</sup>

Automatic drying process. Plastic crockery can start to dry before loading.



#### Delay start and countdown indicator

For maximum flexibility, select a delay start time of up to 24 hours.



#### Integrated water softener

Built in softener ensures optimum hardness levels of the water. Allows for efficient use of the detergent and prolongs the life of the machine.

### Sustainability



#### EcoFeedback Technology

Allows monitoring of water consumption before and after a programme cycle.



#### Global GreenTag GreenRate™ Certified

We are proud to announce that the latest ProfiLine commercial dishwashers PFD 101, PFD 101i, PFD 103 SCi XXL and PFD 104 SCVi XXL have been certified as Global GreenTag GreenRate™ Level C along with a PlatinumHEALTH™ HealthRATE™ certification from GreenTag's Product Health Declaration™ (GreenTag PHD™) program.



#### Efficient energy and water ratings

- The ProfiLine dishwasher range has achieved a 4.0 star energy efficiency rating and a WELS rating of either 4.0 or 4.5 stars when tested under the relevant Australian Standards.

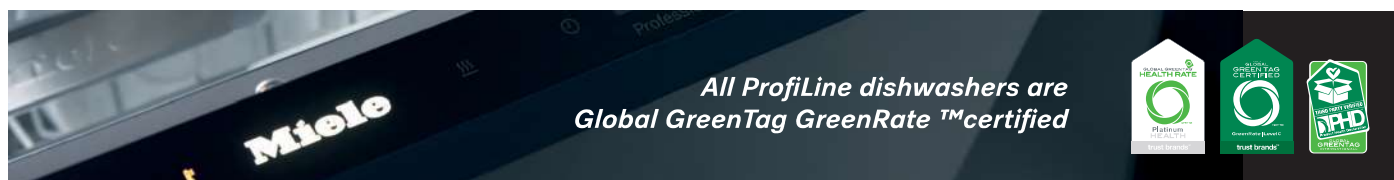


<sup>1</sup>Patent: DE 102 007 008 950. \*Our machines undergo intensive testing under laboratory conditions. The actual number of wash cycles may vary depending on actual usage behaviour, maintenance and care of the machine.

## ProfiLine Dishwashers



Model	PFD 101	PFD 101i	PFD 103 Sci XXL	PFD 104 SCVi XXL
Price incl. GST	<b>AU \$5,496 / NZ \$6,313</b>	<b>AU \$5,729/ NZ \$6,548</b>	<b>AU \$7,016/ NZ \$8,8068</b>	<b>AU \$7,250/ NZ \$8,302</b>
Material No.	11605790	11807700	11807780	11807790
Construction type	Freestanding	Integrated	Integrated	Fully Integrated
Shortest cycle time*	28 minutes	36 minutes	36 minutes	36 minutes
Energy star rating	4	4	4	4
WELS rating	4.0 stars	4.0 stars	4.5 stars	4.5 stars
Water consumption in l/wash	13.1 litres	13.1 litres	13.2 litres	13.2 litres
Place settings	14 place settings	14 place settings	15 place settings	15 place settings
Test programme used	ECO programme	ECO programme	ECO programme	ECO programme
Registration number	DO2540	DO2541	DO2542	DO2543
Electrical connection	230V 50Hz 15-16A 3.2kW (15A plug included)	230V 50HZ 10-16A 2.1kW (10A plug included)	230V 50Hz 10-16A 2.1kW (10A plug included)	230V 50Hz 10-16A 2.1kW (10A plug included)
Convertible to (charges apply)	1N AC 230V 50Hz, 2.1kW, 10A	3N AC 400V 50Hz, 7.3kW, 16A	3N AC 400V 50Hz, 7.3kW, 16A	3N AC 400V 50Hz, 7.3kW, 16A
Water connections	Cold or hot water	Cold or hot water	Cold or hot water	Cold or hot water
Machine dimensions (mm)	W: 598 x H: 845 x D: 570	W: 598 x H: 805 x D: 570	W: 598 x H: 845 x D: 570	W: 598 x H: 845 x D: 570
Fascia design	CleanSteel panel	CleanSteel panel	CleanSteel panel	Fully integrated
Capacity (place settings/cycle)	14	14	15	15
Programmes	8	8	8	8
AutoOpen Drying	YES	YES	YES	YES
EcoFeedback	YES	YES	YES	YES
Water Softener	YES	YES	YES	YES
Brilliant LED Light	-	-	YES	YES
Basket Design	Cutlery Basket ExtraComfort Basket	Cutlery Basket ExtraComfort Basket	3D MultiFlex Drawer MaxiComfort Basket	3D MultiFlex Drawer MaxiComfort Basket
Knock2Open	-	-	-	YES
Door panel (sold separately)	-	CleanSteel GFV 60/57- 7 #10986710	CleanSteel GFV 60/57-7 #10986710	CleanSteel GFVi 702/72 with handle (#10986760) or GFVi 701/72 without handle (#10986740)



*All ProfiLine dishwashers are  
Global GreenTag GreenRate™ certified*



## Dishwasher Accessories



Please note, integrated door panels are sold separately



**GFV 60/57-7** ▲ Mat. no.: 10986710

60 cm wide CleanSteel door panel, suits all 60 cm wide semi-integrated models with Obsidian Black and CleanSteel fascia panels.  
Suitable for PFD 101i Integrated Dishwasher and PFD 103 SCi XXL Semi Integrated Dishwasher.



**GFVi 701/72** Mat. no.: 10986740

60 cm wide CleanSteel door panel, not pre-drilled, supplied without handle (for use with custom handles), suits all 60 cm wide fully integrated models.  
Suitable for PFD 104 SCVi XXL Fully Integrated Dishwasher.



**GFVi 702/72** Mat. no.: 10986760

60 cm wide CleanSteel door panel, with H 7000 PureLine oven handle, suits all 60 cm wide fully integrated models. Suitable for PFD 104 SCVi XXL Fully Integrated Dishwasher.



Miele Australia Pty. Ltd.  
ACN 005 635 398  
ABN 96 005 635 398

Miele New Zealand Ltd.  
IRD 98 463 631

**Head Office Australia**  
PO Box 4084  
Auburn South VIC 3122

Telephone:  
1300 4 MIELE (1300 464 353)  
[www.miele.com.au](http://www.miele.com.au)

**Head Office New Zealand**  
8 College Hill  
Freemans Bay, Auckland, 1011  
Telephone:  
0800 4 MIELE (0800 464 353)  
[www.miele.co.nz](http://www.miele.co.nz)

**Miele Experience Centre  
Doncaster**  
Shop 1136/7, Westfield  
Doncaster  
619 Doncaster Road, VIC 3108

**Miele Experience Centre  
South Melbourne**  
206-210 Coventry Street  
South Melbourne VIC 3205

**Miele Partner Centre**  
509 Nepean Highway  
Brighton VIC 3186

**Miele Experience Centre**  
Lower Ground Food Hall  
David Jones Elizabeth St. Store  
86-108 Castlereagh Street  
Sydney NSW 2000

**Miele Experience Centre  
Chatswood**  
298 Victoria Ave  
Chatswood NSW 2067

**Miele Experience Centre  
Bondi**  
Shop 5001  
Westfield Bondi Junction  
500 Oxford St  
Bondi Junction NSW 2022

**Miele Partner Centre**  
90-98 Victoria Rd  
Drummoyne NSW 2047

**Miele Experience Centre  
Brisbane**  
63 Skyring Terrace  
Newstead QLD 4006

**Miele Experience Centre  
Gold Coast**  
Brickworks Centre  
131 Ferry Road  
Southport QLD 4215

**Miele Experience Centre  
and Office Perth**  
205-207 Stirling Highway  
Claremont WA 6010

**Miele Experience Centre  
Karrinyup**  
Shop SP1236, Level One,  
Karrinyup Shopping Centre,  
200 Karrinyup Rd,  
Karrinyup WA 6018

**Miele Experience Centre  
and Office Adelaide**  
83-85 Sir Donald Bradman Drive  
Hilton SA 5033

**Miele Partner Centre**  
620 Cross Rd  
Plympton Park SA 5038

**Miele Experience Centre  
Auckland**  
8 College Hill  
Freemans Bay, Auckland, 1011

**Miele Experience Centre  
Wellington**  
183 Featherston Street  
Wellington, 6011

**Miele Experience Centre  
Christchurch**  
2 Cathedral Square  
Christchurch, 8011

Trading Conditions: Sales transactions are made between Miele Australia Pty. Ltd. and Miele New Zealand Ltd. and the end consumer.

Terms and Conditions of sale are outlined on the official GST tax invoice.

The Miele Chartered Agent acts on behalf of Miele Australia Pty. Ltd. and Miele New Zealand Ltd.

For further information about our products and services please visit our website: [www.miele.com.au](http://www.miele.com.au) or [www.miele.co.nz](http://www.miele.co.nz)

This price list is valid throughout Australia and New Zealand as from 1 April 2024.

All prices quoted are in Australian and New Zealand Dollars, inclusive of GST. Product availability and prices are subject to change without prior notice.