

## Product Overview

Marine (Commercial Machines)  
Laundry Technology, Dishwashing  
and Accessories

Miele Professional. Immer Besser.

Edition 1 | January 2024

125  
Years



Caring for Our Customers  
With the Most Reliable and Sustainable Solutions.



**With Miele Professional, you are choosing reliable solutions that stand for quality and longevity.**

As a family company now run by its fourth generation, Miele remains true to its responsibility to its products and processes, its employees and business partners and towards conserving our natural resources. This is reflected in the materials we choose as well as in the design and production of our machines. All of our customers benefit from innovations 'Made in Germany' which set standards throughout the industry as well as from award winning product design for ergonomics and functionality, all benefiting from low consumption and running costs.

You have the reassurance that Miele Professional develops the best and most inspiring solutions for our customers. Our guiding principle of 'Immer Besser' has been at our core for the last 125 years, and continues to be at the heart of what we do, ensuring reliability and quality for all of our solutions.

*Markus Miele Reinhard Zinkann*

Dr. Markus Miele  
Executive Director and Co-Proprietor  
Miele Cie. KG

Dr. Reinhard Zinkann  
Executive Director and Co-Proprietor  
Miele Cie. KG

1899 — **125** Years — 2024

# Explore Our Solutions

Foreword . . . . .	2
Sustainability . . . . .	3
Service . . . . .	4

## Washing machines

Controls . . . . .	5
Little Giants . . . . .	6–7

## Dryers

Controls . . . . .	9
Little Giants . . . . .	10–11

## Dishwashers

ProfiLine . . . . .	13–15
MasterLine . . . . .	16–17

## Accessories

. . . . .	18–29
-----------	-------

## Lloyd's Register

. . . . .	30
-----------	----

## Abbreviations, symbols and patent numbers

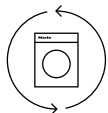
. . . . .	31
-----------	----



Find all information here:  
<https://www.miele.com.au/p/>

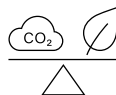
# Our Pledges for the Planet

The race to save our only planet is ever-accelerating. Our commitment to evolve our ambitions is too. With these pledges, we intend to continue along the path we have already embarked on:



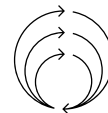
### Make sustainability happen at every step

We continuously work towards making sustainability essential at every stage of our products' and services' life cycle – as well as in all of our value chains, and in the homes and businesses of our customers.



### Make machines that won't leave a mark

Miele is dedicated to producing the best possible products and services with the least impact on the environment, with the ultimate aim to make them 100% carbon-neutral.



### End waste by giving our machines new life

We are working towards creating a circular value chain with net-zero waste for all materials used in our machines to re-enter the loop at the end of their lifecycle.

# Our **Service** for the Shipping Industry

Whether cruise liner, yachts, merchant ships, research vessels or oil rigs – the world over, maritime clients rely on our machines and our service. We ensure that your machines are seaworthy and ready for use once again.

---

## **Worldwide service in almost all ports**

Miele is known for its legendary quality and reliability. With 47 branches and additional representations in 150 countries, Miele is at home in over 3000 ports. An overview of all locations and our service contact numbers are available online.

---

## **International guarantee**

Whichever country you purchased your machine in: Our entire service network of highly competent and factory-trained technicians are at your disposal.

---

## **Excellent management of spare parts**

Should repairs be necessary, we provide prompt support with the installation of the correct spare parts which, thanks to our far-sighted logistics, are on board our service vans ready for use. Equipped with many years of experience and expertise, our service technicians check and repair all relevant parts.

## **Our service promise**

- Best support from manufacturer
- Efficient fault analysis through 'Miele Diagnostic Unit'
- International guarantee
- Fast response time

More on Miele Marine and service availability worldwide online:



[www.miele-marine.com](http://www.miele-marine.com)



# Washing Machines

---

Controls

Little Giants



# LITTLE GIANTS Washing Machines

8 kg load capacity / M Touch Flex controls



## Highlights

- Exclusive to Miele: Gentle and thorough fabric care with honeycomb drum
- Perforated drum rear panel for improved wetting and more efficient dewatering
- Very low residual moisture levels on account of high g-factor

## Controls

Washing machines



## M Touch Flex controls

- High-level user convenience through full-touch colour display
- Simple and intuitive operation at the touch of a fingertip or by swiping
- All information as plain text, 31 languages

Designation	Front	Load	Electrical connection	Material number	Art. no.	EAN
PWM 908 [EL DP MAR 3 AC 230V 50-60Hz]	LW	8 kg	3~ 230V 50/60HZ	11251340	51908186MAR	4002516240969
PWM 908 [EL DP MAR 3 AC 400-480V 50-60Hz]	LW	8 kg	3~ 440V	11251280	51908187MAR	4002516220589

# Technical Data

## PERFORMANCE-PLUS

Washing machines with an 6 and 8 kg load capacity	PWM 908
Frontloader, door opening [Ø mm]	300
<b>Performance data</b>	
Load capacity [kg]	8
Honeycomb drum, drum volume [l]	73
Max. spin speed [max. rpm]	1,600
g factor	704
Residual moisture [%]	48
Drum lighting	◆
<b>Controls/programmes</b>	
M Touch Flex	◆
Delay start, max. 96 h	◆
<b>Water connections</b>	
1 x cold water, 1/2" with 3/4" threaded union	◆
1 x hot water, 1/2" with 3/4" threaded union	◆
Drain pump (DP) DN 22	◆
<b>Dispensing system</b>	
3-compartment front dispenser	◆
Dispenser pump connections	Max. 6
<b>Connection options</b>	
LAN/WiFi	◇/◆
XCI box	◇
XCI adapter	◇
Versatile dispenser adapter for max. 6 liquid products	◇
XKM 3200 WL PLT communication module	◇
Payment system	◇
Peak-load negotiation	◇
<b>Dimensions, weight</b>	
External dimensions H/W/D [mm]	850/596/714
Weight, net [kg]	108
<b>Casing options</b>	
Lid with stainless steel, control panel stainless steel, front and sides in lotus white (LW)	◆
Lid with stainless steel, control panel stainless steel, sides in lotus white and front in stainless steel (SST)	◆
<b>Programme duration</b>	<b>CW/HW</b>
Cottons 60°C [mins.]	59/49
<b>Test certificates</b>	
WEEE, Lloyd's Register, EU Machinery Directive	◆
Hygiene certificate	◆
◆ = Standard, ◇ = Optional, – = Not available	

Electrical data	Standard Electrical Connection 3 AC 400-480V 50-60Hz	Standard Electrical Connection 3 AC 230V 50-60Hz
<b>PWM 908</b>		
Fuse rating [A]	10	16
Total rated load [kW]	4.2	4.4
Heating [kW]	4	4.2
Convertible by Miele Service to	3~ 480 V 50/60 Hz 3~ 400 V 50/60 Hz	

# Notes





# Dryers

---

Controls

Little Giants



# LITTLE GIANTS Tumble Dryers

8 kg load capacity / M Touch Flex controls



## Highlights

- Exclusive to Miele: Gentle and uniform drying with new patented honeycomb drum
- Spot-on drying results thanks to patented PerfectDry system
- Time savings and convenience thanks to large-surface lint filter
- Connected for the future using LAN and WiFi
- High efficiency through maintenance-free, energy-saving drive motor

## Highlights: Heat-pump dryers

- Flexible installation without the need for vent ducting
- Up to 50% energy savings compared with a conventional condenser dryer

## Controls

### Dryers



## M Touch Flex controls

- High-level user convenience through full-touch colour display
- Simple and intuitive operation at the touch of a fingertip or by swiping
- All information as plain text, 31 languages

Designation	Front	Load	Electrical connection	Material number	Art. no.	EAN
PDR 908 [EL MAR 3 AC 230V 50-60Hz]	SST	8 kg	3~ 230V 50/60Hz	11251000	52908486MAR	4002516227762
PDR 908 [EL MAR 3 AC 400-480V 50-60Hz]	LW	8 kg	3~ 440V 50/60Hz	11250960	52908387MAR	4002516227953
PDR 908 [HP MAR 1N AC 230V 50Hz]	SST	8 kg	230V~ 50Hz	11251210	52908281MAR	4002516218715
PDR 908 [HP MAR 1N AC 230V 60Hz]	LW	8 kg	230V~ 60Hz	11251180	52908188MAR	4002516218258

# Technical Data

## PERFORMANCE-PLUS

<b>Tumble dryers, 8 kg load capacity</b>	<b>PDR 908 EL</b>	<b>PDR 908 HP</b>
Frontloader, door opening [Ø mm]	370	370
<b>Performance data</b>		
Load capacity [kg]	8	8
Honeycomb drum, drum volume [l]	130	130
Drying system	Vented	Heat-pump*
Exhaust duct	DN 100	–
Drain connection DN 10	–	◆
<b>Features</b>		
Porthole door	◆	◆
Large-surface filter	◆	–
Low-maintenance heat-exchanger filter system	◆	◆
Drum lighting	◆	◆
<b>Controls/programmes</b>		
M Touch Flex	◆	◆
Delay start, max. 24 h	◆	◆
<b>Connection options</b>		
LAN/WiFi	◇/◆	◇/◆
XCI box	◇	◇
XCI adapter	◇	◇
XKM 3200 WL PLT communication module	◇	◇
Payment system	◇	◇
Peak-load negotiation	◇	–
<b>Dimensions, weight</b>		
External dimensions H/W/D [mm]	850/596/717	850/596/777
Weight, net [kg]	51.5	72
<b>Casing options</b>		
Lid with stainless steel, control panel stainless steel, front and sides in lotus white (LW)	◆	◆
Lid with stainless steel, control panel stainless steel, sides in lotus white and front in stainless steel (SST)	◆	◆
<b>Programme duration</b>		
Normal dry Cottons/Polycottons programme [mins.]	42/37	79/67
<b>Test certificates</b>		
CE, Splash protection IP X4, WEEE, Lloyd's Register, EU Machinery Directive	◆	◆

◆ = Standard, ◇ = Optional, – = Not available

EL = Electric, HP = Heat pump, LW = Lotus white, enamelled, SST = Stainless steel, \*Contains FCs, hermetically sealed; Coolant R134a, Coolant quantity 0.61 kg, ODP of coolant: 1430 kg CO<sub>2</sub> e, ODP of machine: 872 kg CO<sub>2</sub> e

<b>Electrical data</b>	<b>Standard Electrical Connection</b>	<b>3 AC 230 V 50/60 Hz</b>	<b>Standard Electrical Connection</b>	<b>Standard Electrical Connection</b>
	<b>3 AC 400-480V 50-60 Hz</b>		<b>1N AC 230V 50Hz</b>	<b>1N AC 230V 60Hz</b>
	<b>PDR 908 EL</b>		<b>PDR 908 HP</b>	
Fuse rating [A]	10	16	10	10
Total rated load [kW]	5.4	6.4	1.44	1.2
Heating [kW]	5.16	6.14	–	–
Convertible by Miele Service to	3~ 400V 50/60HZ 3~ 480V 50/60HZ	–	–	–



# Dishwashers

---

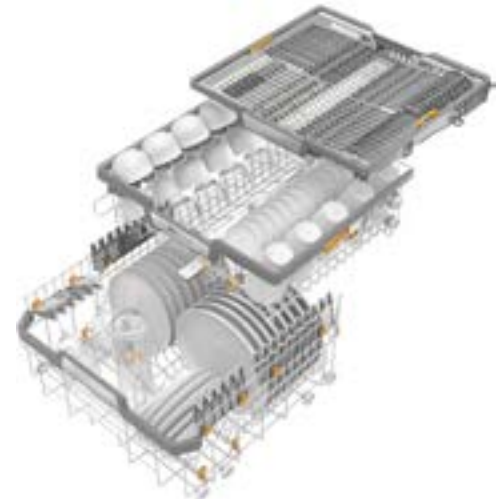
ProfiLine

MasterLine



# PFD 104 SCVi XXL Dishwasher

ProfiLine frontloader/fresh water system



MaxiComfort baskets

## PFD 104 SCVi XXL

- Integrated model

### Plus

- Shortest programme cycle 36 minutes
- Fitted with baskets and 3D MultiFlex drawer as standard
- High-level user convenience through wide range of product features

Designation	Front panel / Colour	Baskets	Electrical connection	Material number	Art. no.	EAN
PFD 104 SCVi XXL [MAR] WF	WF	with baskets	3N AC 400V 50HZ	11750880	61010405MAR	4002516424178
PFD 104 SCVi XXL [MAR] WF	WF	with baskets	2N AC 120/208-240V, 60HZ	11750900	61010415MAR	4002516424192

# Technical Data

Dishwasher	PFD 104 SCVi XXL	
Integrated machine	◆	
<b>Control panels</b>		
CleanSteel	◆	
Straight/slanted	Fully integrated	
<b>Throughput</b>		
Max. wash cycles per day	5	
Short programme duration	36 mins.	
<b>Convenience</b>		
Waterproof system/filter indicator light	◆/◆	
In-operation indicator light	Display	
Door locking option	◆	
Time left display/Delay start up to 24 h	◆/◆	
WiFi	◆	
AutoClose	◆	
MultiLingua	◆	
EcoFeedback	◆	
BrilliantLight	◆	
Operating noise dB(A) re 1 pW	45	
<b>Wash programmes</b>		
Number of dishwashing programmes	8	
Intensive cleaning	Intensive/Hygiene	
Fast, simple cleaning	Short/Universal	
Gentle cleaning of glasses	Glasses	
Label programme	ECO	
Programmes for special requirements	Cold/Pre-wash, Plastics	
<b>Quality of results</b>		
Perfect GlassCare	◆	
Fresh water dishwasher	◆	
Active condensation drying	◆	
Tested virucidal efficacy	◆	
<b>Efficiency and sustainability</b>		
Energy efficiency class (A–G) / Sound emission class (A–D)	E/C	
Water consumption in l/Electricity consumption in kWh in ECO programme	12.0/0.950	
Energy consumption per 100 wash cycles in ECO programme	95	
Consumption value in kWh in the ECO programme with hot water connection	0.6	
Hot water connection	◆	
<b>Basket design</b>		
Cutlery loading	3D MultiFlex tray	
Basket design	MaxiComfort	
FlexCare glass holder /FlexCare cup rack	4/2	
Number of standard place settings	14	
<b>Test certificates</b>		
EU Machinery Directive, EMC interference suppression, Lloyd's Register	◆	
Hygiene certificate, Virus Seal	◆	
<b>Dimensions/weights</b>		
External dimensions H/W/D [mm]	845/598/550	
Width of building-in niche [mm]	600	
Weight, net [kg]	48	
Length of water inlet/drain hose/supply lead in mm	1500/1500/1700	
Min–max. door front weight in kg	5–12 kg	
◆ = Standard, – = Not available		

Electrical data	3N AC 400 V 50 Hz	2N AC 120/208–240 V 60 Hz
Fuse rating [A]	3 x 16	2 x 30
Supply lead approx. 1.7 m	◆	◆
Total rated load [kW]	7.3	3.7–4.0
Heating [kW]	7.1	3.5–3.8
Convertible by Miele Service to	AC 230 V, 50 Hz, 10–16 A	AC 120 V, 60 Hz, 15 A

# PFD 401 U Dishwasher

Frontloader/fresh water system

MasterLine



Illustrations show PFD 401 as undercounter unit.

## PFD 401 U dishwasher

- Fresh-water system for top-class cleaning performance and hygiene

### Plus

- Shortest cycle 8 mins.
- Very efficient cleaning performance on two rack levels
- Maximum capacity 285 plates/h (insert without cutlery holder) or 240 plates/h plus further cutlery and crockery items in upper and lower baskets
- AutoClose
- Can be built under

### Optional

- Dispenser module for liquid detergents
- Plastic baskets on 2 wash levels with stainless steel carriers available separately

Designation	Front panel / Colour	Baskets	Electrical connection	Material number	Art. no.	EAN
PFD 401 U [WB Marine]	SST	with baskets	3N AC 400V 50HZ	12143270	61040130MAR	4002516604631



# Technical Data

Dishwasher with fresh-water system	PFD 401 U
Built-under machine without lid, with/without plinth return	◆/◇
Freestanding unit	–
Casing stainless steel (SST)	◆
Wash cabinet made from high-quality stainless steel	◆
Dry+ drying	–
AutoClose	◆
Door lock (code protected if required)	–
Filter monitoring	◆
<b>Throughput</b>	
Circulation pump Qmax [l/min]	390
Shortest programme running time <sup>2)</sup> [min]	8
Max. capacity <sup>2)</sup> [plates/h without cutlery holder]	285
Max. final rinse temperature [°C]	70
<b>Controls, programmes</b>	
Programme controls	M Touch Basic
Number of programmes	10
Max. delay start [in hours]	24
Display of time left, target and actual temperatures	◆
<b>Water connections</b>	
No. of cold/hot connections (max. 65 °C), 0.4–10 bar flow pressure (40–1000 kPa)	1/1
Drain pump DN 22, delivery head 100 cm	◆
<b>Dispenser systems</b>	
1 x combination door dispenser for cleaning agent (powder/tablets) and rinse aid	◆
1 x integrated dispensing pump for liquid detergent	–
Salt container in the door	◆
<b>Connection options</b>	
Dispenser for liquid cleaning agent/rinsing agent	◆/◆
WiFi	◆
<b>Water softener</b>	
For hot and cold water, up to 65 °C, max. water hardness 60 °dH	◆
<b>Steam condenser</b>	
Aerosol steam condenser	–
<b>Dimensions, weight</b>	
External dimensions built-under machine H/W/D [mm]	820–880/598/580
Width of building-in niche [mm]	600
Wash cabinet dimensions H/W [mm]	559/536
Wash cabinet dimensions D [mm]	Top: 474/bottom: 516
Loading height above floor [mm]	216
Net weight, freestanding/built-under machine [kg]	–/64.5
<b>Test certificates</b>	
CE, compliant with EU Machinery Directive, EMC-Interference suppression, splash-water protected IPX1, Lloyd's Register	◆
Hygiene certificate, Virus Seal	◆

◆ = Standard   ◇ = Optional with additional accessories   – = Not available

<sup>2)</sup> Figures refer to three-phase connection and 65°C hot water.

Electrical data	3N AC 400 V 50 Hz
Fuse rating [A]	3 x 16
Supply lead approx. 1.7 m	◆
Plug	–
Total rated load [kW]	8.9
Heating [kW]	8.5
Heat pump [kW]	0.4
Convertible to:	1N AC 230 V, 50 Hz



## Accessories

---

Dispensing technology

Communication modules

XCI and Connector Boxes

Lint filter box

Plinths

Multifunction modules

Silencers and baskets

Trolley, laundry tubs and shelving

Dishwasher accessories

# Communication Modules

Accessories for PWM 908, PDR 908



## XKM 3200 WL PLT

**Communication module, with LAN and WiFi interface for connection to external systems.**

- For integration in a communication slot
- Simple installation

Accessories	Description	Material number	Art. no.	EAN
XKM 3200 WL PLT	Communication module with LAN and WiFi interface for setting up a connection with external systems.	11291940	59320001D	4002516213055

# XCI Box

Accessories for PWM 908, PDR 908



## XCI Box

### Communication box for connection to external systems.

- Connection of peak-load, venting, payment, and dispensing systems
- Convenient integration with a washing machine or tumble dryer
- Multiple settings for liquid dispensing
- Full downwards compatibility with current Miele systems
- H/W/D: 8.17 cm - 25.43 cm - 22.97 cm



## APCL 019

### Communication box incl. installation kit for connection of washing machines/vented dryers to external systems.

- For installation with Little Giants washing machines and dryers
- Connection of peak-load, venting, payment, and dispensing systems
- Convenient integration with a washing machine or tumble dryer
- Multiple settings for liquid dispensing
- Full downwards compatibility with current Miele systems
- H/B/T: 13.5 cm - 29 cm - 59 cm



## APCL 027

### Communication box incl. installation kit for connection of a heat-pump dryer to external systems.

- Connection of peak-load, venting, payment, and dispensing systems
- For installation with Little Giants heat-pump dryers
- Convenient integration with heat-pump dryers
- Multiple settings for liquid dispensing
- Full downwards compatibility with current Miele systems
- H/B/T: 13.5 cm - 29 cm - 59 cm

Accessories	Description	Material number	Art. no.	EAN
XCI - Box	Communication box for setting up a connection with external systems.	10664830	50501030D	4002515829547
APCL 019	Communication box including installation kit for setting up a washing machine/vented dryer connection with external systems.	11228520	59590006D	4002516176268
APCL 027	Communication box including installation kit for setting up a connection from the heat-pump dryer to external systems.	11399510	59590022D	4002516265283

## Accessories for PWM 908, PDR 908



### APCL 018

**Dispenser adapter kit, for connecting dispensing systems to water injection.**

- Suitable for hoses with 14 mm diameter



### APCL 015

**Dispenser adapter, for connecting dispensing systems to water injection.**

- Suitable for hoses with 10 mm diameter



### APCL 016

**Dispenser adapter kit, for direct connection of dispenser pumps.**

- Suitable for hoses with 6 mm diameter



### APCL 017

**Dispenser adapter kit, for direct connection of dispenser pumps.**

- Suitable for hoses with 9 mm diameter

Accessories	Description	Material number	Art. no.	EAN
APCL 018	Dispensing adapter for connecting dispensing systems with water injection.	11229540	59590005D	4002516176497
APCL 015	Dispensing adapter for connecting dispensing systems with water injection.	11229300	59590002D	4002516176459
APCL 016	Dispensing adapter installation kit for connecting dispenser pumps directly.	11229320	59590003D	4002516176473
APCL 017	Dispensing adapter installation kit for connecting dispenser pumps directly.	11229340	59590004D	4002516178934

# Plinths / Plinth With Lint Filter Box

Accessories for PWM 908



## APCL 021

**Lint filter box, stainless steel, removes lint and coarser particles from wash liquor.**

- For installation on a suitable plinth
- Removable for quick and easy cleaning.
- Easily removable fluff filter in stainless steel
- Volume 24 litres
- Diameter of rear connector 70 mm
- H/W/D: 25.00 cm - 49.85 cm - 86.00 cm



## APCL 005

**Box plinth, 30 cm, for ergonomic loading and unloading of washing machines and dryers.**

- H/W/D: 30.50 cm - 60.50 cm - 62.20 cm



## APCL 011

**Box plinth, 47 cm, for ergonomic loading and unloading of washing machines and dryers.**

- H/W/D: 48.00 cm - 60.50 cm - 62.20 cm

Accessories	Description	Material number	Art. no.	EAN
APCL 021	Fluff filter drawer - stainless steel for filtering fluff and large particles out of the suds solution.	11318880	59590016D	4002516228400
APCL 005	Box plinth, 30 cm high for ergonomic loading and unloading of the washing machine and tumble dryer.	11318800	59590010D	4002516228349
APCL 011	Box plinth, 47 cm high for ergonomic loading and unloading of the washing machine and tumble dryer.	11318830	59590013D	4002516228370

# Plinths / Plinth With Lint Filter Box

Accessories for PWM 908



## APCL 086

**Open plinth, with lint filter box, 30 cm, removes lint and coarser particles from wash liquor.**

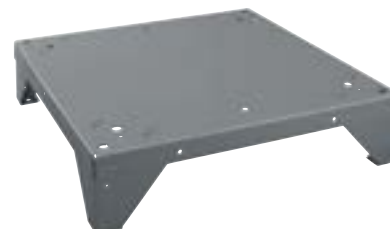
• H/W/D: 30.00 cm - 60.24 cm - 86.00 cm



## APCL 089

**Open plinth, with lint filter box, 75 cm, removes lint and coarser particles from wash liquor.**

• H/W/D: 75.60 cm - 60.50 cm - 86.00 cm



## APCL 084

**Open plinth, 15 cm, for ergonomic loading and unloading of washing machines and dryers.**

• H/W/D: 15.00 cm - 60.24 cm - 61.94 cm



## APCL 085

**Open plinth, 30 cm, for ergonomic loading and unloading of washing machines and dryers.**

• H/W/D: 30.00 cm - 60.24 cm - 61.94 cm



## APCL 087

**Open plinth, 47 cm, for ergonomic loading and unloading of washing machines and dryers.**

• H/W/D: 47.60 cm - 60.24 cm - 61.94 cm

Accessories	Description	Material number	Art. no.	EAN
APCL 086	Open plinth with fluff filter box, 30 cm high for filtering fluff and large particles out of the suds solution.	11776590	59590086D	4002516433613
APCL 089	Open plinth with fluff filter box, 75 cm high for filtering fluff and large particles out of the suds solution.	11776620	59590089D	4002516433644
APCL 084	Open plinth, height 15 cm for ergonomic loading and unloading of the washing machine and tumble dryer.	11776560	59590084D	4002516433590
APCL 085	Open plinth, height 30 cm for ergonomic loading and unloading of the washing machine and tumble dryer.	11776570	59590085D	4002516433606
APCL 087	Open plinth, height 47 cm for ergonomic loading and unloading of the washing machine and tumble dryer.	11776600	59590087D	4002516433620

# Plinths / Plinth With Lint Filter Box

Accessories for PWM 908



## APCL 088

**Open plinth, 75 cm, for ergonomic loading and unloading of washing machines and dryers.**

• H/W/D: 75.60 cm - 60.50 cm - 62.20 cm

Accessories	Description	Material number	Art. no.	EAN
APCL 088	Open plinth, height 75 cm for ergonomic loading and unloading of the washing machine and tumble dryer.	11776610	59590088D	4002516433637



# Plinths

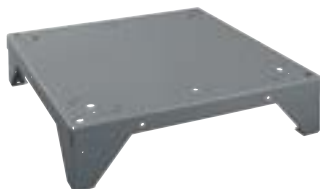
## Accessories for PDR 908



### APCL 005

**Box plinth, 30 cm, for ergonomic loading and unloading of washing machines and dryers.**

• H/W/D: 30.50 cm - 60.50 cm - 62.20 cm



### APCL 084

**Open plinth, 15 cm, for ergonomic loading and unloading of washing machines and dryers.**

• H/W/D: 15.00 cm - 60.24 cm - 61.94 cm



### APCL 085

**Open plinth, 30 cm, for ergonomic loading and unloading of washing machines and dryers.**

• H/W/D: 30.00 cm - 60.24 cm - 61.94 cm



### APCL 087

**Open plinth, 47 cm, for ergonomic loading and unloading of washing machines and dryers.**

• H/W/D: 47.60 cm - 60.24 cm - 61.94 cm



### APCL 088

**Open plinth, 75 cm, for ergonomic loading and unloading of washing machines and dryers.**

• H/W/D: 75.60 cm - 60.50 cm - 62.20 cm

Accessories	Description	Material number	Art. no.	EAN
APCL 005	Box plinth, 30 cm high for ergonomic loading and unloading of the washing machine and tumble dryer.	11318800	59590010D	4002516228349
APCL 084	Open plinth, height 15 cm for ergonomic loading and unloading of the washing machine and tumble dryer.	11776560	59590084D	4002516433590
APCL 085	Open plinth, height 30 cm for ergonomic loading and unloading of the washing machine and tumble dryer.	11776570	59590085D	4002516433606
APCL 087	Open plinth, height 47 cm for ergonomic loading and unloading of the washing machine and tumble dryer.	11776600	59590087D	4002516433620
APCL 088	Open plinth, height 75 cm for ergonomic loading and unloading of the washing machine and tumble dryer.	11776610	59590088D	4002516433637

# Plinths

Accessories for PDR 908



## APCL 011

**Box plinth, 47 cm, for ergonomic loading and unloading of washing machines and dryers.**

• H/W/D: 48.00 cm - 60.50 cm - 62.20 cm

Accessories	Description	Material number	Art. no.	EAN
APCL 011	Box plinth, 47 cm high for ergonomic loading and unloading of the washing machine and tumble dryer.	11318830	59590013D	4002516228370

# Trolley Carriages and Laundry Tubs



## APCL 094

### Laundry tub, red, 45 l capacity.

- Suitable for APCL 058
- H/W/D: 61.00 cm - 42.00 cm - 26.00 cm



## APCL 096

### Laundry tub, red, 85 l capacity.

- Suitable for APLC 059
- H/W/D: 78.00 cm - 55.00 cm - 29.00 cm

Accessories	Description	Material number	Art. no.	EAN
APCL 094	Laundry tub, red with 45 l capacity.	11824320	59590094D	4002516473473
APCL 096	Laundry tub, red with 85 l capacity.	11824340	59590096D	4002516474173

# Dishwasher Accessories

for PFD 40x model series



## ABL 50

- Spacer for plinth area to adjust to carcass height of 72 cm, stainless steel
- Suitable for all PG 805x and PFD 40x series dishwashers
- Height 43 mm

## BKS-80

### Installation kit, to fix plinth fascia at the end of a kitchen run

- To protect the worktop from moisture
- Optional when installed as a undercounter unit

Accessories	Description	Material number	Art. no.	EAN
ABL 50	Filler panel for the plinth area for visual height alignment to 72 cm units, stainless steel.	9378030	67211401D	4002515179215
BKS-80	Mounting kit to fix a plinth facing at the end of a kitchen run.	9715630	67211505D	4002515379509

# Dishwasher Accessories

for PFD 40x model series



## DOS G 80 Comfort

### Peristaltic dispenser pump, with level indicator for automatic dispensing of liquid detergent.

- Suitable for PFD 40x MasterLine dishwashers
- For canisters up to 325 mm tall (up to canister opening)
- Dispenses up to 55 ml per minute
- Adjustable via the dishwasher controls
- Flexible cap (covers DIN 50 and 51 threads)
- Length of connection cable: 2.80 m
- Length of dispenser hose to siphon: 1.80 m
- Length of dispenser hose to machine: 2.85 m
- Min. canister opening: 31 mm



## DOS G 80 Comfort +

### Peristaltic dispenser pump, with level indicator for automatic dispensing of liquid detergent.

- Suitable for PFD 40x MasterLine dishwashers
- For canisters up to 325 mm tall (up to canister opening)
- Dispenses up to 55 ml per minute
- Adjustable via the dishwasher controls
- Includes flexible caps in 3 different sizes (covers DIN 40, 45, 50 and 51 caps)
- Length of connection cable: 2.80 m
- Length of dispenser hose to siphon: 1.80 m
- Length of dispenser hose to machine: 2.85 m
- Min. canister opening: 31 mm



## DOS G 80/1 Comfort

### Peristaltic dispenser pump, with level indicator for automatic dispensing of liquid detergent.

- Suitable for PFD 40x MasterLine dishwashers
- For canisters up to 214 mm tall (up to canister opening)
- Dispenses up to 55 ml per minute
- Adjustable via the dishwasher controls
- Flexible cap (covers DIN 50 and 51 threads)
- Length of connection cable: 2.80 m
- Length of dispenser hose to siphon: 1.80 m
- Length of dispenser hose to machine: 2.85 m
- Min. canister opening: 31 mm

Accessories	Description	Material number	Art. no.	EAN
DOS G 80 Comfort	Hose metering pump with fill level indicator for automatic dispensing of liquid cleaning agents.	12187270	67.747540D	4002516627944
DOS G 80 Comfort +	Hose metering pump with fill level indicator for automatic dispensing of liquid cleaning agents.	12187300	67.747541D	4002516647997
DOS G 80/1 Comfort	Hose metering pump with fill level indicator for automatic dispensing of liquid cleaning agents.	12187290	67.747545D	4002516647980



## A Class of Its Own – For Maximum Performance and Safety.

The safety of a ship, its crew, the environment and all processes on board has top priority. In order to provide a worldwide service for maritime applications, Miele maintains 47 branch offices and additional representations in 150 countries and more than 3,000 ports.

Miele has developed a range of special-purpose Marine versions with a particular focus on the specific needs of vessels, e.g. with respect to installation and operation. In view of special safety requirements, Miele's products and services are additionally certified, e.g. with Lloyd's Register or VDE.\*

At every point throughout the life cycle of a vessel, Lloyd's Register (LR) works in close collaboration with customers in order to achieve the ultimate in safety, efficiency and compliance.

Consequently, all models from Miele Marine are tested by the independent Phönix Testlab as required to obtain official certification by Lloyd's Register – and the associated recommendation for use in marine applications.

Lloyd's Register is a service of international repute providing independent quality monitoring and risk prevention in shipbuilding and other areas for more than 250 years.

The intended use of Marine versions refers to ocean-going vessels (international waters).

**If products are used on inland waterways, these are permanently located within the jurisdiction of a state and must subscribe to the legislation of those states.**

\*varies according to model series

# Abbreviations, Symbols and Patent Numbers

## Laundry technology

DP	Drain pump
ED	Stainless steel
EL	Electric heating
HP	Heat pump
IG	Iron grey
LW	Lotus white
MAR	Marine
PDR	Professional tumble dryers
PWM	Professional washing machines
SOM	Marine
SST	Stainless steel

## Dishwashers

MAR	Marine
MasterLine	Marketing designation
PFD	Model designation: Fresh water dishwasher
ProfiLine	Marketing designation
SCVi	Fully integrated dishwasher with 3D+ cutlery drawer / 3D Multiflex drawer
SST	Stainless steel
U	Undercounter unit
WB	With baskets
WF	Without front
XXL	Extra large chamber

## Characters

◆	Standard
◇	Optional
–	Not available

## Miele patents/patent nos.

Air Recycling Plus: Patent EP 1 682 715 B1
Liquid dispensing adapter: Patent EP 1 835 063 B1
Large-surface filter: Patent EP 1 103 647 B1
Condensate drain tube: Patent EP 1 186 697 B1 Patent DE 100 56 889 C1
Honeycomb drum: Patent EP 2 390 399 B1
Honeycomb drum 2.0: Patent EP 2 700 744 B1
Pre-spin: Patent EP 2 003 236 B1

# Miele

Miele Australia and New Zealand  
[www.miele.com.au/professional](http://www.miele.com.au/professional)  
[professional.sales@miele.com.au](mailto:professional.sales@miele.com.au)  
AUS 1300 731 411 | NZ 0800 002 593