

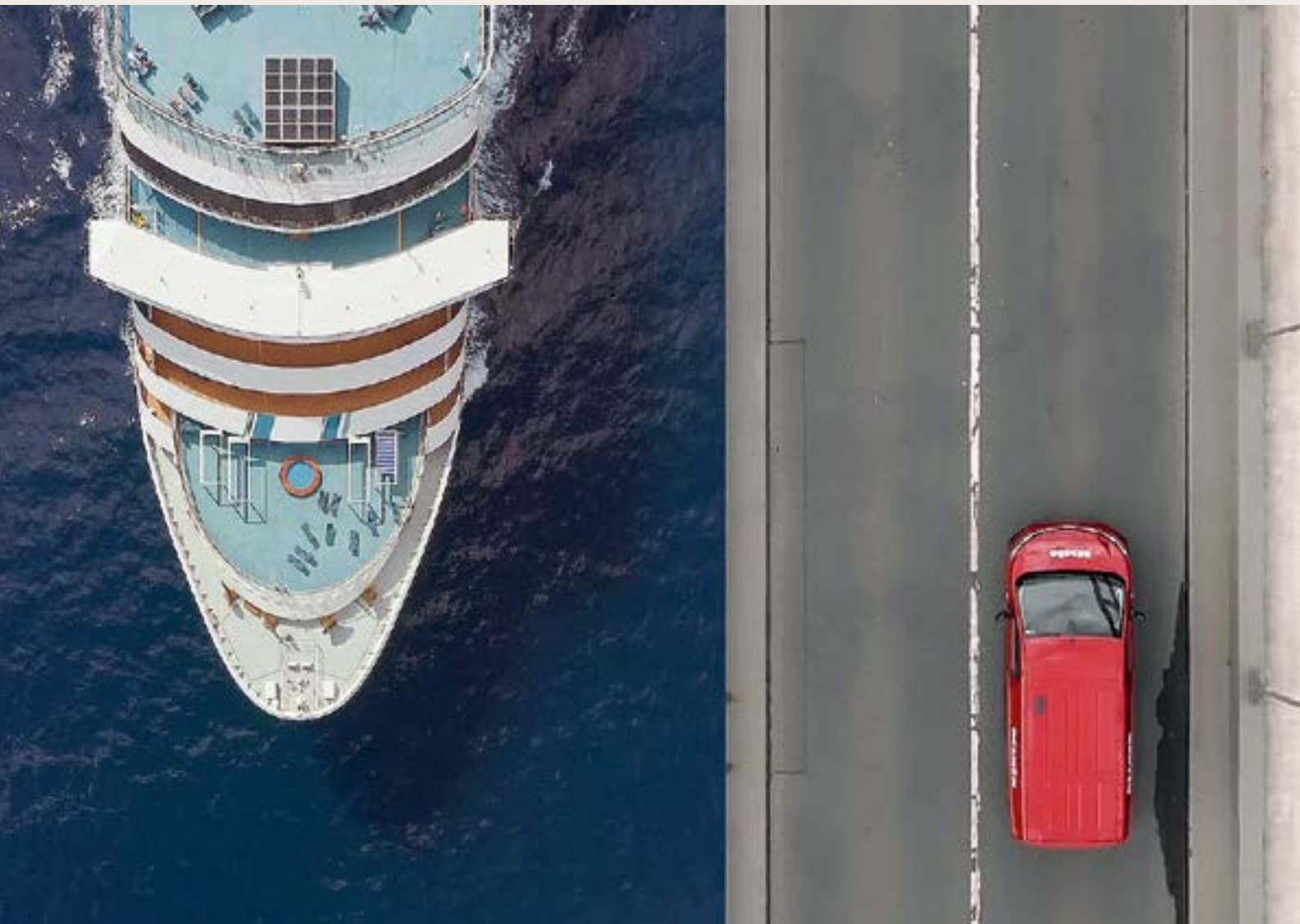
Product Overview

Marine (Commercial Machines)
Laundry Technology, Dishwashing
and Accessories

Miele Professional. Immer Besser.

Edition 1 | January 2026

360 PRO



Always at Your Side
With Reliable and Sustainable Solutions.



With Miele Professional, you are choosing reliable solutions that stand for quality and longevity.

As a family company now run by its fourth generation, Miele remains true to its responsibility to its products and processes, its employees and business partners and towards conserving our natural resources. This is reflected in the materials we choose as well as in the design and production of our machines. All of our customers benefit from innovations “Made in Germany” which set standards throughout the industry as well as from award-winning product design for ergonomics and functionality, combined with low consumption and running costs.

Miele Professional develops solutions tailored to specific target groups which inspire our customers while simplifying workflows and streamlining processes. Our guiding principle of “Immer Besser” (“Forever better”) has been at our core for the last 125 years, and continues to be at the heart of what we do, ensuring reliability and quality for all of our solutions.

Markus Miele Reinhard Zinkann

Dr Markus Miele
Executive Director and Co-Proprietor
Miele Cie. KG

Dr Reinhard Zinkann
Executive Director and Co-Proprietor
Miele Cie. KG

Explore Our Solutions

Marketing Managers – ensure content of written text is consistent with capitals for product names. Please pay attention to consistency of the written word.

Foreword	2
Sustainability	3
360PRO solutions	4
Service	5
Washing machines	
Controls	8–9
Little Giants	10–13
Benchmark	14–23
Tumble dryers	
Controls	26
Little Giants	28–31
Benchmark	32–37
Flatwork ironers	
Controls	40
HM flatwork ironers	42–43
PRI flatwork ironers	44–47

Dishwashers	
ProfiLine	50–51
MasterLine PFD 401 U	52–53
MasterLine PFD 409 Offshore	54–55
Programmes and parameters	56–57
Accessories	58–96
Lloyd’s Register	98
Abbreviations, symbols and patent numbers	99

This QR code is optional for the countries to include, linking to their website and/or Miele online shop directly.

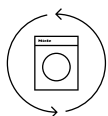


Find all information here:
www.miele-professional.com

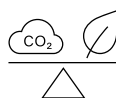


Our Pledges for the Planet

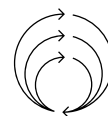
The race to save our only planet is ever-accelerating. Our commitment to evolve our ambitions is too. With these pledges, we intend to continue along the path we have already embarked on:



Sustainability at every level
 We are continually working towards making sustainability an essential component of every phase of the product or service life cycle – throughout the entire value creation chain and in the homes and businesses of our customers.



Make machines that won't leave a mark
 Miele is dedicated to producing the best possible products and services with the least impact on the environment, with the ultimate aim to make them 100 % carbon-neutral.



End waste by giving our machines new life
 We are working towards creating a circular economy with net-zero waste, where all materials used in our machines re-enter the loop at the end of their service life.

360PRO – The Holistic and Sustainable Solution for All Your Business Needs

You can rely on our unrivalled support when it comes to all of your reprocessing needs thanks to our tried-and-tested holistic solutions. Miele Professional provides you with the ideal solutions to meet the many demands of your business. From planning and calculation through to implementation and maintenance, we ensure that you can fully focus on your daily work, all with total peace of mind. **We call this 360PRO.**



Our **Service** For the Shipping Industry

From cruise liners and yachts to merchant ships, research vessels and oil rigs – maritime customers all over the world rely on our machines and our service. We ensure that your machines are seaworthy and ready for use once again.

Service along your travel route

Regardless of which country you are in, our service team will take care of international coordination and arrange repair work in the next port on your route. We take care of your machines so you don't have to worry. We are here for you – from yachts and cruise ships to cargo ships and oil rigs.

International network

Even during the planning phase, we work closely with shipyards and other experts in the industry to ensure a smooth and hassle-free process. Thanks to our steadily growing network, we can offer you the best Miele service, machines and spare parts in many ports. Our qualified service team offers comprehensive assistance, from consultancy and repairs through to full maintenance.

Excellent management of spare parts

Should repairs be necessary, we provide prompt support with the installation of the correct spare parts which, thanks to our foresighted logistics, are on board our service vans ready for use.

Miele Marine service hotline:

America

Tel.: +1 609 419 4376

Australia, Asia, Oceania

Tel.: +61 3 9764 7880

Europe, Africa, Middle East

Tel.: +49 5241 89 66 877

More on Miele Marine and service availability worldwide online:



miele.com/marine-service





Washing Machines and Washer-Dryer Stacks

Controls

Little Giants

Benchmark



Controls

Washing machines



M Select controls

- Rotary control
- Language-neutral programme symbols on control panel
- Touch display with all information in local language, 29 languages



M Touch Flex controls

- High-level user convenience through full-touch colour display
- Simple and intuitive operation at the touch of a fingertip or by swiping
- All information displayed as clear text, 31 languages



M Touch Pro controls

- High-level user convenience through full-touch colour display
- Simple and intuitive operation at the touch of a fingertip or by swiping
- All information displayed as clear text, 31 languages
- Various operating modes to meet individual client needs



M Touch Pro Plus controls

- High-level user convenience through full-touch colour display
- Simple and intuitive operation at the touch of a fingertip or by swiping
- All information displayed as clear text, 31 languages
- All information on wash cycles available at a glance
- Freely programmable to meet all user needs
- Functions for expert users, e.g. skip and manual controls, taken one step further



Washing Machines

Little Giants / Performance Plus

6 kg and 8 kg load capacity / M Touch Flex controls



Highlights

- Exclusive to Miele: gentle and thorough laundry care with honeycomb drum
- Perforated drum rear panel for improved wetting and more efficient dewatering of laundry
- Very low residual moisture levels on account of high g-factor
- M Touch Flex controls with a full touch colour display are the defining feature on the new top-of-the-range models when it comes to fast and intuitive machine operation.

Designation	Front	Load	Standard electrical connection –		Possible voltage variant(s) –		Material number	Article number	EAN
			Heater rating kW – Total rated load kW – Fuse rating A	Heater rating kW – Total rated load kW – Fuse rating A	Heater rating kW – Total rated load kW – Fuse rating A	Heater rating kW – Total rated load kW – Fuse rating A			
PWM 908 [EL DP MAR 3 AC 230V 50-60Hz]	LW	8 kg	3~ 230V 50/60HZ - 4,2 - 4,4 - 16 A		- - -		11251340	51908186MAR	4002516240969
PWM 908 [EL DP MAR 3 AC 400-480V 50-60Hz]	LW	8 kg	3~ 440V - 4 - 4,2 - 10 A		3~ 400V - 3,4 - 3,6 - 10 A 3~ 480V 50/60HZ - 4,8 - 5 - 10 A		11251280	51908187MAR	4002516220589

Technical Data

PERFORMANCE-PLUS

Washing machines with 6 and 8 kg load capacity	PWM 908
Front loader, door opening [ø mm]	300
Performance data	
Load size [kg]	8
Honeycomb drum, drum volume [l]	73
Max. spin speed [max. rpm]	1600
g-factor	704
Residual moisture [%]	48
Drum lighting	◆
Controls/programmes	
M Touch Flex	◆
Delay start, max. 96 h	◆
Water connections	
1 x cold water, 1/2" with 3/4" threaded union	◆
1 x hot water, 1/2" with 3/4" threaded union	◆
Drain pump (DP) DN 22	◆
Dispensing systems	
3-compartment front detergent drawer	◆
Dispensing pump connections	Max. 6
Connection options	
LAN/WiFi	◇/◆
XCI box	◇
XCI adapter	◇
Flexible dispensing adapters for max. 6 liquid media	◇
APCL 106 communication module	◇
Payment system	◇
Peak-load negotiation	◇
Dimensions, weight	
External dimensions H/W/D [mm]	850/596/714
Weight, net [kg]	104
Casing options	
Lid in stainless steel, control panel in stainless steel, front and side panels in lotus white (LW)	◆
Lid in stainless steel, control panel in stainless steel, side panels in lotus white and front in stainless steel (SST)	◇
Programme running time	CW/HW
Coloured items 60 °C [min]	59/49
Test certificates	
WEEE, Lloyd's Register, EU Machinery Directive	◆
Hygiene certificate	◆

◆ = Standard, ◇ = Optional, – = Not available



Tumble Dryers

Controls

Little Giants

Benchmark



Controls

Tumble dryers



M Select controls

- Rotary control for simple programme selection
- Language-neutral programme symbols on control panel
- Touch display with all information in local language, 29 languages

M Touch Flex controls

- High-level user convenience through full-touch colour display
- Simple and intuitive operation at the touch of a fingertip or by swiping
- All information displayed as clear text, 31 languages
- Various operating modes to meet individual client needs



M Touch Pro controls

- High-level user convenience through full-touch colour display
- Simple and intuitive operation at the touch of a fingertip or by swiping
- All information displayed as clear text
- 31 languages
- Various operating modes to meet individual client needs

Notes



Tumble Dryers

Little Giants / Performance Plus

8 kg load capacity / M Touch Flex controls



Highlights

- Exclusive to Miele: gentle and uniform drying with the honeycomb drum
- Spot-on drying results thanks to the PerfectDry system
- Time savings and convenience thanks to large-surface fluff filter
- Connected for the future using LAN and WiFi
- High efficiency through maintenance-free, energy-saving drive motor
- M Touch Flex controls with a full touch colour display are the defining feature on the new top-of-the-range models when it comes to fast and intuitive machine operation.

Highlights – heat-pump dryers

- Flexible installation without the need for vent ducting
- Up to 50 % energy savings compared with a condenser dryer
- Effective heat exchanger filter system
- Patented condensed water drainage

Designation	Front	Load	Standard electrical connection –		Possible voltage variant(s) –		Material number	Article number	EAN
			Heater rating kW – Total rated load kW – Fuse rating A	Heater rating kW – Total rated load kW – Fuse rating A	Heater rating kW – Total rated load kW – Fuse rating A	Heater rating kW – Total rated load kW – Fuse rating A			
PDR 908 [EL MAR 3 AC 230V 50-60Hz]	LW	8 kg	3~ 230V 50/60HZ - 6,14 - 6,4 - 16 A		- - -		11250990	52908386MAR	4002516195498
PDR 908 [EL MAR 3 AC 230V 50-60Hz]	SST	8 kg	3~ 230V 50/60HZ - 6,14 - 6,4 - 16 A		- - -		11251000	52908486MAR	4002516227762
PDR 908 [EL MAR 3 AC 400-480V 50-60Hz]	LW	8 kg	3~ 440V 50/60HZ - 5,16 - 5,4 - 10 A		3~ 400V 50/60HZ - 4,26 - 4,5 - 10 A 3~ 480V 50/60HZ - 6,14 - 6,4 - 10 A		11250960	52908387MAR	4002516227953
PDR 908 [HP MAR 1N AC 230V 50Hz]	LW	8 kg	230V~ 50HZ - - 1,44 - 10 A		- - -		11251200	52908181MAR	4002516218449
PDR 908 [HP MAR 1N AC 230V 50Hz]	SST	8 kg	230V~ 50HZ - - 1,44 - 10 A		- - -		11251210	52908281MAR	4002516218715
PDR 908 [HP MAR 1N AC 230V 60Hz]	LW	8 kg	230V~ 60HZ - - 1,2 - 10 A		- - -		11251180	52908188MAR	4002516218258

Technical Data

PERFORMANCE-PLUS

Tumble dryers with 8 kg load capacity	PDR 908 EL	PDR 908 HP
Front loader, door opening [ø mm]	370	370
Performance data		
Load size [kg]	8	8
Honeycomb drum, drum volume [l]	130	130
Drying system	Vented system	Heat pump*
Vent connection	DN 100	–
Drain connection DN 10	–	◆
Features		
Porthole door	◆	◆
Large-surface filter	◆	–
Low-maintenance heat-exchanger filter system	–	◆
Drum lighting	◆	◆
Controls/programmes		
M Touch Flex	◆	◆
Delay start, max. 24 h	◆	◆
Connection options		
LAN/WiFi	◇/◆	◇/◆
XCI box	◇	◇
XCI adapter	◇	◇
APCL 106 communication module	◇	◇
Payment system	◇	◇
Peak-load negotiation	◇	–
Dimensions, weight		
External dimensions H/W/D [mm]	850/596/717	850/596/777
Weight, net [kg]	51.5	71
Casing options		
Lid with stainless steel, control panel in stainless steel, front and side panels in lotus white (LW)	◆	◆
Lid with stainless steel, control panel in stainless steel, side panels in lotus white and front in stainless steel (SST)	◇	◇
Programme running time		
Programme: Normal, cottons/mixed fibre [min]	42/37	79/67
Test certificates		
CE, splash protection IP X4, WEEE, Lloyd's Register, EU Machinery Directive	◆	◆

◆ = Standard, ◇ = Optional, – = Not available

EL = Electric, HP = Heat pump, LW = Lotus white, SST = Stainless steel, * Contains FCs, hermetically sealed; refrigerant R134a, refrigerant quantity 0.61 kg, GWP of refrigerant: 1430 kg CO_{2e}, GWP of machine: 872 kg CO_{2e}



Dishwashers

ProfiLine

MasterLine

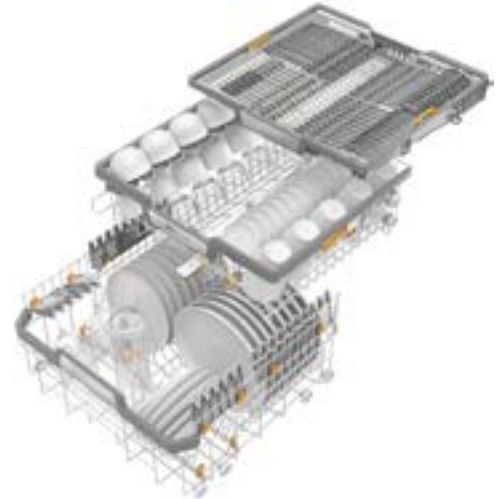
Programmes and parameters



PFD 104 SCVi XXL Dishwasher

Front loader/fresh-water system

ProfiLine



MaxiComfort P baskets

PFD 104 SCVi XXL

- Integrated model

Plus

- Shortest programme running time 17 min
- Fitted with baskets and 3D MultiFlex tray as standard
- High-level user convenience through wide range of product features

Designation	Front	Baskets	Standard electrical connection – Heater rating kW – Total rated load kW – Fuse rating A	Possible voltage variant(s) – Heater rating kW – Total rated load kW – Fuse rating A	Material number	Article number	EAN
PFD 104 SCVi XXL [MAR]	WF	with baskets	3N AC 400V 50HZ - 7,10 - 7,30 - 16 A	AC 230V 50HZ - 1,90 - 2,10 - 10-16 A	11750880	61010405MAR	4002516424178
PFD 104 SCVi XXL [MAR]	WF	with baskets	2N AC 120/208-240V 60HZ - 3,5-3,8 - 3,7-4,0 - 30 A	AC 120V 60HZ - 1,3 - 1,4 - 15 A	11750900	61010415MAR	4002516424192

Technical Data

Dishwasher	PFD 104 SCVi XXL
Integrated machine	◆
Control panels	
Panel	Fully integrated / in the door
Performance	
Max. cycles per day*	5
Running time of short programme	17 min
Convenience	
Waterproof system/filter indicator light	◆/◆
Function indicator	Display
Door locking option	◆
Time left display/delay start up to 24 h	◆/◆
WiFi	◆
AutoClose	◆
Selectable display languages	◆
EcoFeedback	◆
BrilliantLight	◆
Operating noise dB(A) re 1 pW	45
Dishwashing programmes	
Number of dishwashing programmes	8
Intensive cleaning	Intensive/Hygiene
Fast, simple cleaning	Short/Universal
Gentle cleaning of glasses	Glasses
Label programme	ECO
Programmes for special requirements	Cold/Pre-wash, Plastics
Quality of results	
Perfect GlassCare	◆
Active condensation drying	◆
Tested virucidal efficacy	◆
Efficiency and sustainability	
Energy efficiency class (A–G)/sound emission class (A–D)	E/C
Water consumption in l/electricity consumption in kWh in ECO programme	12.0/0.950
Energy consumption per 100 wash cycles in ECO programme	95
Consumption value in kWh in the ECO programme with hot water connection	0.6
Hot or cold water connection	◆
Basket design	
Cutlery loading	3D MultiFlex tray
Basket design	MaxiComfort P
FlexCare glass holder / FlexCare cup rack	4/2
Number of standard place settings	14
Test certificates	
EU Machinery Directive, EMC interference suppression, Lloyd's Register	◆
Hygiene certificate, virus hygiene label	◆
Dimensions/weights	
External dimensions H/W/D [mm]	845/598/570
Width of building-in niche [mm]	600
Weight, net [kg]	51
Length of water inlet/drain hose/supply lead in mm	1500/1500/1700
Min.–max. door front weight in kg	5–12 kg
◆ = Standard, – = Not available	
* Figures refer to a connection to 3N AC 400 V, 50 Hz, hot water	

PFD 401 U Dishwasher

Front loader/fresh-water system

MasterLine



Illustrated: PFD 401 as built-under machine.

PFD 401 U dishwasher

- Fresh-water system for top-class cleaning performance and hygiene

Plus

- Shortest programme running time 8 min
- Very efficient cleaning performance on two wash levels
- Maximum cleaning performance 285 plates/h (insert without cutlery holder) or 240 plates/h plus further cutlery and crockery items in upper and lower baskets
- AutoClose door mechanism
- Can be built under

Optional

- Dispensing module for liquid cleaning agent
- Plastic baskets on 2 wash levels with stainless steel carriers available separately

Designation	Front	Baskets	Standard electrical connection – Heater rating kW – Total rated load kW – Fuse rating A	Possible voltage variant(s) – Heater rating kW – Total rated load kW – Fuse rating A	Material number	Article number	EAN
PFD 401 U [WB Marine]	SST	with baskets	3N AC 400V 50HZ - 8,5 - 8,9 - 16 A	AC 230V 50HZ - 3,0 - 3,4 - 16 A	12143270	61040130MAR	4002516604631

Technical Data

Dishwasher with fresh-water system	PFD 401 U
Built-under machine without lid, with/without plinth return	◆/◇
Freestanding machine	–
Casing in white (LW)/stainless steel (SST)	–/◆
Wash cabinet made from high-quality stainless steel	◆
Dry+ drying	–
AutoClose	◆
Door lock (code-protected if required)	–
Filter monitoring	◆
Performance	
Circulation pump Qmax [l/min]	390
Shortest programme running time ² [min]	8
Max. cleaning performance ² [plates/h without cutlery holder]	285
Max. final rinse temperature [°C]	70
Controls, programmes	
Programme controls	M Touch Basic
Number of programmes	10
Max. delay start [in hours]	24
Display of time left, target and actual temperatures	◆
Water connections	
No. of cold/hot water connections (max. 65 °C), 0.4–10 bar flow pressure (40–1000 kPa)	1/1
Drain pump DN 22, delivery head 100 cm	◆
Dispensing systems	
1 x combination dispenser in the door for detergent (powder/tabs) and rinse aid	◆
1 x integrated dispensing pump for liquid cleaning agent	–
Salt container in the door	◆
Connection options	
Dispenser for liquid cleaning agent/rinse aid	◆/◆
WiFi	◆
Water softener	
For hot and cold water, up to 65 °C, max. water hardness 60 °dH	◆
Steam condenser	
Aerosol steam condenser	–
Dimensions, weight	
External dimensions of built-under machine H/W/D [mm]	820–880/598/580
Width of building-in niche [mm]	600
Wash cabinet dimensions H/W [mm]	559/536
Wash cabinet dimensions D [mm]	Top: 474/bottom: 516
Loading height above floor [mm]	216
Net weight, freestanding/built-under machine [kg]	–/64.5
Test certificates	
CE, EU Machinery Directive, EMC interference suppression, splash protection IP X1, Lloyd's Register	◆
Hygiene certificate, virus hygiene label	◆
◆ = Standard ◇ = Optional with additional accessories – = Not available	
² Figures refer to a connection to 3N AC 400 V, 50 Hz, hot water 65 °C.	

Programmes and Parameters

ProfiLine

ProfiLine (PFD 104)*						
Programme	Temperature		Programme running time			Total running time [in min]
	Main wash [°C]	Rinse [°C]	Rinse [in min]	Drying [in min]	Additional drying [in min]	
Short	60	65 (75)	17	–	20	37
Universal	65	65 (75)	31	–	30	61
Intensive	75	65 (75)	43	–	30	73
Glasses	50	50	19	–	20	39
Hygiene	75	70 (75)	47	–	30	77
Plastics	50	60	30	30	–	60
Cold pre-wash	–	–	13	–	–	13
ECO	51	48	158	92	–	250

* Figures refer to a connection to 3N AC 400 V, 50 Hz, hot water

Programmes and Parameters

MasterLine

Programme	PFD 401 U Marine	Main wash [°C] ¹	Rinse [°C] ¹	Running time ³ [min]	PFD 409 Offshore	Main wash [°C] ²	Rinse [°C] ²	Running time ⁴ [min]
Short	◆	55	60	8	◆	66	85	12
Universal	◆	55	60	11	◆	66	85	18
Intensive	◆	65	60	19	◆	66	85	22
Glasses	◆	50	50	11	◆	50	50	11
Beer glasses	◆	50	Cold	12	–	–	–	–
Hygiene	◆	70	60	23	–	–	–	–
Cutlery	◆	60	55	17	◆	60	55	17
Plastics	◆	50	60	16	◆	50	60	16
EnergySave	◆	45	50	23	–	–	–	–
Reactivation	◆	–	–	15	◆	–	–	15
Cold	◆	–	–	3	◆	–	–	3
Drain	◆	–	–	1	◆	–	–	1

^{1,2}Rinse settings can be modified as follows:

The holding time is selectable between 0 and 10 min in 1-min increments.

The temperature is selectable in increments of 1 °C, whereby the following applies: [1]: 30–70 °C, [2]: 30–85 °C

³Connection to 3N AC 400 V, 50 Hz, hot water 65 °C

⁴Connection to 3 AC 440 V, 60 Hz, hot water 65 °C

Programmes for Special Applications

Programmes	Description	Version
Hygiene	Programme for load items with high hygiene requirements. Wash cycle temperature: 70 °C Final rinse temperature: 60 °C Holding time (final rinse): 3 minutes	PFD 401 U
Glasses	Special programme for washing glasses. > Gentle main wash thanks to temperatures limited to 50 °C.	PFD 401 U PFD 409
Beer glasses	Cold final rinse without rinse aid. > Improved head on beer as residues from rinse aid cause bubbles to collapse. > Glasses are not too hot after washing and are ready for serving chilled beer faster.	PFD 401 U
Plastics	Special programme for washing plastics. > Reduced wash pressure and double rinse aid concentration for good drying results.	PFD 401 U PFD 409
Cutlery	Special programme for washing cutlery.	PFD 401 U PFD 409



Accessories

Dispensing technology

Communication modules

XCI and Connector Boxes

Fluff filter box

Water recovery module

Plinths

Kits, valves, counters

Accessories for flatwork ironers

Multifunction modules

Silencers and baskets

Trolley frames, laundry tubs, shelving

Dishwasher accessories

Communication Modules

Accessories for PWM 507, PWM 906, PWM 908, PDR 507, PDR 908, PDR 910, PDR 914, PDR 918, PDR 922, PDR 928, PDR 944



APCL 106

Communication module, with LAN and WiFi interface for connection to external systems.

- For integration in a module slot
- Simple installation
- Suitable for heat-pump dryers with propane refrigerant

Designation	Description	Material number	Article number	EAN
APCL 106	Communication module with LAN and WiFi interface for setting up a connection with external systems.	12476810	59590106EU	4002516767282

XCI Box

Accessories for PWM 507, PWM 906, PWM 908, PDR 507, PDR 908



XCI-AD

Communication adapter for connection to external payment systems.

- Connection of payment systems
- Convenient integration with a washing machine or tumble dryer
- Space-saving installation
- Full downwards compatibility with current Miele systems
- H/W/D: 8.2 cm – 25.4 cm – 20.0 cm



XCI box

Communication box for connection to external systems.

- Connection of peak-load, vented, payment and dispensing systems
- Convenient integration with a washing machine or tumble dryer
- Multiple settings for liquid dispensing
- Full downwards compatibility with current Miele systems
- H/W/D: 8.17 cm – 25.43 cm – 22.97 cm



APCL 019

Communication box incl. installation kit for connection of washing machines/vented dryers to external systems.

- For installation on Little Giants washing machines and vented dryers
- Connection of peak-load, vented, payment and dispensing systems
- Convenient integration with a washing machine or tumble dryer
- Multiple settings for liquid dispensing
- Full downwards compatibility with current Miele systems
- H/W/D: 13.5 cm – 29 cm – 59 cm



APCL 027

Communication box incl. installation kit for connection of a heat-pump dryer to external systems.

- Connection of peak-load, vented, payment and dispensing systems
- For installation on Little Giants heat-pump dryers
- Convenient integration with a heat-pump dryer
- Multiple settings for liquid dispensing
- Full downwards compatibility with current Miele systems
- H/W/D: 13.5 cm – 29 cm – 59 cm



APCL 046

Communication box incl. installation kit for connection of washing machines/vented dryers to external systems.

- Connection of peak-load, vented, payment and dispensing systems
- For installation on Little Giants washing machines and vented dryers
- Convenient integration with a washing machine or tumble dryer
- Multiple settings for liquid dispensing
- Full downwards compatibility with current Miele systems
- H/W/D: 7.67 cm – 26.43 cm – 22.97 cm



APCL 047

Communication box incl. installation kit for connection of a heat-pump dryer to external systems.

- Connection of peak-load, vented, payment and dispensing systems
- For installation on Little Giants heat-pump dryers
- Convenient integration with a heat-pump dryer
- Full downwards compatibility with current Miele systems
- H/W/D: 7.67 cm – 26.43 cm – 22.97 cm

Designation	Description	Material number	Article number	EAN
XCI - AD	Communication adapter for setting up a connection with external payment systems.	11346010	59590020D	4002516237907
XCI - Box	Communication box for setting up a connection with external systems.	10664830	50501030D	4002515829547
APCL 019	Communication box including installation kit for setting up a washing machine/vented dryer connection with external systems.	11228520	59590006D	4002516176268
APCL 027	Communication box including installation kit for setting up a connection from the heat-pump dryer to external systems.	11399510	59590022D	4002516265283
APCL 046	Communication box including installation kit for setting up a washing machine/vented dryer connection with external systems.	11537560	59590044D	4002516354246
APCL 047	Communication box including installation kit for setting up a connection from the heat-pump dryer to external systems.	11537570	59590045D	4002516354253

XCI Box

Accessories for PWM 507, PWM 906, PWM 908, PDR 507, PDR 908



APCL 043

Communication box for connection to external systems.

- Connection of peak-load, vented, payment and dispensing systems
- Convenient integration with a washing machine or tumble dryer
- Multiple settings for liquid dispensing
- Full downwards compatibility with current Miele systems
- H/W/D: 0.82 cm – 25.40 cm – 23.00 cm



APCL 018

Dispensing adapter kit, for connecting dispensing systems with water injection.

- Suitable for hoses with 14 mm diameter



APCL 015

Dispensing adapter, for connecting dispensing systems with water injection.

- Suitable for hoses with 10 mm diameter



APCL 016

Dispensing adapter kit, for direct connection of dispensing pumps.

- Suitable for hoses with 6 mm diameter



APCL 017

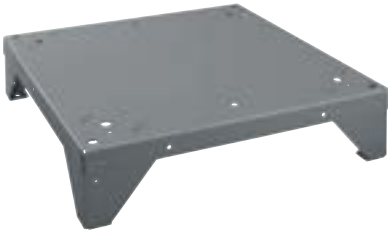
Dispensing adapter kit, for direct connection of dispensing pumps.

- Suitable for hoses with 9 mm diameter

Designation	Description	Material number	Article number	EAN
APCL 043	Communication box for setting up a connection with external systems.	11492730	50501031NAM	4002516313694
APCL 018	Dispensing adapter installation kit for connecting dispensing systems with water injection.	11229540	59590005D	4002516176497
APCL 015	Dispensing adapter for connecting dispensing systems with water injection.	11229300	59590002D	4002516176459
APCL 016	Dispensing adapter installation kit for connecting dispenser pumps directly.	11229320	59590003D	4002516176473
APCL 017	Dispensing adapter installation kit for connecting dispenser pumps directly.	11229340	59590004D	4002516178934

Plinths

for Little Giants washing machines and dryers PWM 507, PWM 906, PWM 908, PDR 507, PDR 908



APCL 084

Open plinth, 15 cm, for ergonomic loading and unloading of washing machines and dryers.

• H/W/D: 15.00 cm – 60.24 cm – 61.94 cm



APCL 085

Open plinth, 30 cm, for ergonomic loading and unloading of washing machines and dryers.

• H/W/D: 30.00 cm – 60.24 cm – 61.94 cm



APCL 087

Open plinth, 47 cm, for ergonomic loading and unloading of washing machines and dryers.

• H/W/D: 47.60 cm – 60.24 cm – 61.94 cm



APCL 005

Box plinth, 30 cm, for ergonomic loading and unloading of washing machines and dryers.

• H/W/D: 30.50 cm – 60.50 cm – 62.20 cm



APCL 022

Box plinth, 30 cm, no floor bolts, for ergonomic loading and unloading of washing machines and dryers.

- No need to anchor the plinth to the floor
- Safe and secure operation
- H/W/D: 30.50 cm – 60.50 cm – 62.50 cm



APCL 011

Box plinth, 47 cm, for ergonomic loading and unloading of washing machines and dryers.

• H/W/D: 48.00 cm – 60.50 cm – 62.20 cm

Designation	Description	Material number	Article number	EAN
APCL 084	Open plinth, height 15 cm For ergonomic loading and unloading of the washing machine and tumble dryer.	11776560	59590084D	4002516433590
APCL 085	Open plinth, height 30 cm For ergonomic loading and unloading of the washing machine and tumble dryer.	11776570	59590085D	4002516433606
APCL 087	Open plinth, height 47 cm For ergonomic loading and unloading of the washing machine and tumble dryer.	11776600	59590087D	4002516433620
APCL 005	Box plinth, 30 cm high For ergonomic loading and unloading of the washing machine and tumble dryer.	11318800	59590010D	4002516228349
APCL 022	Box plinth, 30 cm high, without floor bolts for ergonomic loading and unloading of the washing machine and tumble dryer.	11476830	59590017D	4002516305699
APCL 011	Box plinth, 47 cm high For ergonomic loading and unloading of the washing machine and tumble dryer.	11318830	59590013D	4002516228370

Plinths / Plinth With Fluff Filter Box

for Little Giants washing machines and dryers PWM 507, PWM 906, PWM 908, PDR 507, PDR 908



APCL 088

Open plinth, 75 cm, for ergonomic loading and unloading of washing machines and dryers.

• H/W/D: 75.60 cm – 60.50 cm – 62.20 cm



APCL 086

Open plinth, with fluff filter box, 30 cm, removes fluff and coarser particles from suds.

• H/W/D: 30.00 cm – 60.24 cm – 86.00 cm



APCL 089

Open plinth, with fluff filter box, 75 cm, removes fluff and coarser particles from suds.

• H/W/D: 75.60 cm – 60.50 cm – 86.00 cm



APCL 090

Open plinth, with fluff filter box, 30 cm, removes fluff and coarser particles from suds.

• H/W/D: 30.00 cm – 60.24 cm – 79.30 cm



APCL 099

Box plinth, 30 cm, without floor anchors, for ergonomic loading and unloading of washing machines and dryers.

• For improving noise situations in laundry rooms
• H/W/D: 30.00 cm – 60.10 cm – 62.80 cm



APCL 021

Fluff filter drawer, stainless steel, removes fluff and coarser particles from suds.

• For installation on a suitable plinth
• Removable for quick and easy cleaning.
• Easily removable fluff filter in stainless steel
• Volume 24 litres
• Diameter of rear connector 70 mm
• H/W/D: 25.00 cm – 49.85 cm – 86.00 cm

Designation	Description	Material number	Article number	EAN
APCL 088	Open plinth, height 75 cm For ergonomic loading and unloading of the washing machine and tumble dryer.	11776610	59590088D	4002516433637
APCL 086	Open plinth with fluff filter box, 30 cm high for filtering fluff and large particles out of the suds solution.	11776590	59590086D	4002516433613
APCL 089	Open plinth with fluff filter box, 75 cm high for filtering fluff and large particles out of the suds solution.	11776620	59590089D	4002516433644
APCL 090	Open plinth with fluff filter box, 30 cm high for filtering fluff and large particles out of the suds solution.	11776630	59590090S	4002516433651
APCL 099	Box plinth, 30 cm high, without floor bolts for ergonomic loading and unloading of the washing machine and tumble dryer.	11949470	59590099D	4002516515296
APCL 021	Stainless steel fluff filter drawer for filtering fluff and large particles out of the suds solution.	11318880	59590016D	4002516228400

Plinth With Fluff Filter Box

for Little Giants washing machines and dryers PWM 507, PWM 906, PWM 908, PDR 507, PDR 908



APCL 026

Fluff filter box, stainless steel, removes fluff and coarser particles from suds.

- For installation on a suitable plinth
- Removable for quick and easy cleaning.
Easily removable fluff filter in stainless steel
- Volume 24 litres
- Diameter of connector on left or right 50 mm
- H/W/D: 30.00 cm – 56.20 cm – 79.30 cm



APCL 105

Open plinth, with fluff filter box, 75 cm, removes fluff and coarser particles from suds.

Designation	Description	Material number	Article number	EAN
APCL 026	Fluff filter compartment - stainless steel For filtering fluff and large particles out of the suds solution.	11346110	59590021S	4002516238249
APCL 105	Open plinth with fluff filter box, 75 cm high for filtering fluff and large particles out of the suds solution.	12303310	59590105D	4002516735748

Silencers and Baskets



APCL 098

Silencer, reduces sound emissions in vent line.

- Flexible – for ease of adjustment to existing pipe systems
- Length approx. 110 cm
- Temperature resistant up to 200 °C
- Internal diameter: 150 mm, external diameter 200 mm
- Suitable for all heating types (except gas)



TK 180

Dryer basket, for use in dryer.

Suitable for PT 5186 and PT 7186

- For drying delicate textiles
- Ideal for drying trainers, for example



TRK 555

Dryer basket, ideal for trainers, children's boots, small woollen textiles or soft toys.

- Best care for delicate textiles
- Specifically developed for Miele tumble dryers
- Can be used in all Little Giants tumble dryers

Designation	Description	Material number	Article number	EAN
APCL 098	Silencer to reduce exhaust noise.	11901040	59590098EU	4002516505228
TK 180	Tumble dryer basket for hanging in the dryer.	7289550	59018001D	4002514715698
TRK 555	Tumble dryer basket ideal for trainers, children's boots, small woollen fabrics or cuddly toys.	9614800	12996010D	4002515315941

Trolley Frames and Laundry Tubs



APCL 058

Trolley frame, with 4 castor wheels, suitable for 45 l laundry tub.

- H/W/D: 29.20 cm – 55.00 cm – 36.00 cm



APCL 059

Trolley frame, with 4 castor wheels, suitable for 85 l laundry tub.

- H/W/D: 29.20 cm – 66.00 cm – 41.00 cm



APCL 060

Handle for installation on Miele Professional trolley frame for ease of handling.

- H/W/D: 78.00 cm – 20.00 cm – 37.00 cm



APCL 094

Laundry tub, red, 45 l capacity.

- Suitable for APCL 058
- H/W/D: 61.00 cm – 42.00 cm – 26.00 cm



APCL 093

• Laundry tub, blue, 45 l capacity.

- Suitable for 058
- H/W/D: 61.00 cm – 42.00 cm – 26.00 cm



APCL 096

Laundry tub, red, 85 l capacity.

- Suitable for APLC 059
- H/W/D: 78.00 cm – 55.00 cm – 29.00 cm

Designation	Description	Material number	Article number	EAN
APCL 058	Chassis with 4 castor wheels, suitable for 45 l laundry tub.	11772080	59590058EU	4002516430940
APCL 059	Chassis with 4 castor wheels, suitable for 85 l laundry tub.	11772150	59590059EU	4002516431053
APCL 060	Handle for installation on Miele Professional chassis for simple handling.	11771590	59590060EU	4002516430926
APCL 094	Laundry tub, red with 45 l capacity.	11824320	59590094D	4002516473473
APCL 093	Laundry tub, blue with 45 l capacity.	11824310	59590093D	4002516474166
APCL 096	Laundry tub, red with 85 l capacity.	11824340	59590096D	4002516474173

Trolley Frames and Laundry Tubs



APCL 095

Laundry tub, blue, 85 l capacity.

- Suitable for APCL 059
- H/W/D: 78.00 cm – 55.00 cm – 29.00 cm

Designation	Description	Material number	Article number	EAN
APCL 095	Laundry tub, blue with 85 l capacity.	11824330	59590095D	4002516473480

Transport Trolleys



APCL 062

Trolley with sprung base made of aluminium, for convenient handling height.

- Capacity: 380 l
- 2 castor wheels with brakes
- H/W/D: 86.00 cm – 106.00 cm – 71.00 cm



APCL 083

Light-weight alloy transport trolley, 223 l capacity.

- Castor wheels with brakes
- H/W/D: 76.00 cm – 74.00 cm – 60.00 cm



APCL 082

Sack trolley, collapsible for storage in confined spaces.

- Tubular structure with detachable sheet holders
- Solid rubber tyres with 4 lockable castor wheels
- H/W/D: 115.00 cm – 21.00 cm – 56.00 cm

Designation	Description	Material number	Article number	EAN
APCL 062	Aluminium trolley with vertically adjustable base for uniform handle height.	11747690	59590062EU	4002516423812
APCL 083	Light alloy trolley with 223 l capacity.	11748200	59590083EU	4002516424024
APCL 082	Laundry bag trolley foldable for storage in the smallest of spaces.	11748180	59590082EU	4002516424017

Shelves



APCL 073

Shelf trolley with 3 intermediate shelves sloping to the rear for optimum storage.

- High quality – robust tubular steel design
- Solid rubber tyres with 4 lockable castor wheels
- Laundry cannot slip out thanks to vertical rails at the back
- H/W/D: 174.00 cm – 80.00 cm – 42.00 cm



APCL 074

Shelf trolley with 3 intermediate shelves sloping to the rear for optimum storage.

- High quality – robust tubular steel design
- Solid rubber tyres with 4 lockable castor wheels
- Laundry cannot slip out thanks to vertical rails at the back
- H/W/D: 174.00 cm – 80.00 cm – 42.00 cm



APCL 075

Shelf trolley with 4 intermediate shelves sloping to the rear for optimum storage.

- High quality – robust tubular steel design
- Solid rubber tyres with 4 lockable castor wheels
- Laundry cannot slip out thanks to vertical rails at the back
- H/W/D: 160.00 cm – 50.00 cm – 120.00 cm



APCL 076

Shelf trolley with 4 intermediate shelves sloping to the rear for optimum storage.

- High quality – robust tubular steel design
- Solid rubber tyres with 4 lockable castor wheels
- Laundry cannot slip out thanks to vertical rails at the back
- H/W/D: 160.00 cm – 50.00 cm – 120.00 cm

Designation	Description	Material number	Article number	EAN
APCL 073	Mobile shelf unit with 3 sloping shelves for optimum storage.	11748060	59590073EU	4002516423928
APCL 074	Mobile shelf unit with 3 sloping shelves for optimum storage.	11748080	59590074RU	4002516423935
APCL 075	Mobile shelf unit with 4 sloping shelves for optimum storage.	11748090	59590075EU	4002516423942
APCL 076	Mobile shelf unit with 4 sloping shelves for optimum storage.	11748100	59590076RU	4002516423959

Dishwasher Accessories

for PFD 40x model series



ABL 50

- Filler panel for plinth area to adjust to carcass height of 72 cm, stainless steel.
- Suitable for all PG 805x and PFD 40x series dishwashers
- Height 43 mm

Designation	Description	Material number	Article number	EAN
ABL 50	Filler panel for the plinth area for visual height alignment to 72 cm units, stainless steel.	12621600	67211405D	4002516817079

Accessories for ProfiLine

for PFD 104 SCVi



GFVi 702/72

**Stainless steel front panel with PureLine handle:
W x H, 60 x 72 cm for fully integrated Profiline
dishwashers.**

- Perfect design harmony in the kitchen
- Simple removal of fingerprints – Stainless steel/
CleanSteel
- Including PureLine handle and fittings

Designation	Description	Material number	Article number	EAN
GFVi 702/72	Int. front panel: W x H, 60 x 72 cm PureLine design for fully integrated Profiline dishwashers.	10986760	21999991D	4002516058090

Notes



Notes





A Class of Its Own – for Maximum Performance and Safety.

The safety of a ship, its crew, the environment and all processes on board have top priority. In order to provide a worldwide service for maritime applications, Miele maintains 47 branch offices and additional representation in 150 countries and more than 3000 ports.

Miele has developed a range of special-purpose Marine versions with a particular focus on the specific needs of vessels, e.g. with respect to installation and operation. In view of special safety requirements, Miele's products and services are additionally certified, e.g. with Lloyd's Register or VDE.*

The intended use of Marine versions refers to ocean-going vessels (international waters).

If products are used on inland waterways, these are permanently located within the jurisdiction of a state and must subscribe to the legislation of the state in question.

* Varies according to model series

Abbreviations, Symbols and Patent Numbers

Laundry technology

AB	Airing bar
D	With steam function
D ind.	Indirect steam heating
DD	Detergent drawer
DP	Drain pump
DV	Drain valve
ED	Stainless steel
EL	Electric heating
HM	Professional flatwork ironer
HP	Heat pump
IB	Feed-in belts
IG	Iron grey
LAM	Leaf-spring padding
LW	Lotus white
MAR	Marine (LR)
MF	Multifunction module
PDR	Professional tumble dryer
PDW	Professional washer-dryer stack
PRI	Professional flatwork ironer
PW	Professional washing machine
PWM	Professional washing machine
RF	Laundry return feed kit
SOM	Special Marine construction
SST	Stainless steel
STW	Steel wool padding
WEK	Detergent drawer

Dishwashers

AE	Stainless steel casing
APFD	Accessories for fresh-water dishwashers
MAR	Marine
MasterLine	Marketing designation
Offshore	Marine
PFD	Model identifier for dishwasher with fresh-water system
ProfiLine	Marketing designation
SCVi	Fully integrated dishwasher with 3D+ cutlery tray / 3D MultiFlex tray
SST	Stainless steel
U	Built-under machine
WB	With baskets
WF	Without front
XXL	Extra-large wash cabinet

Symbols

◆	Standard
◇	Optional
–	Not available

Miele patents/patent nos.

Air Recycling Plus: patent EP 1 682 715 B1
Liquid dispensing adapter: patent EP 1 835 063 B1
Large-surface filter: patent EP 1 103 647 B1
Condensed water drainage: Patent EP 1 186 697 B1
Impregnation of cleaning cloths (in mop machines): patent DE 100 56 889 C1
Honeycomb drum: patent EP 2 390 399 B1
Honeycomb drum 2.0: patent EP 2 700 744 B1
StreamClean: patent EP 2 460 929 B1
Pre-spin: patent EP 2 003 236 B1
Fluff filter: EP 2273005
Stainless steel flange: Europe: EP 3631075 Chinese patent: CN201880035738 South Korean patent: KR 10-2314826 US patent: US 11136704
Patented wash rhythm: EP 1354997 B1

Miele

Miele & Cie. KG
www.miele-professional.com

Please adapt to regional/specific needs