

**Miele**

# Dental Health Is Your Focus. Making You Smile Is Ours.

Miele Professional. Immer Besser.

**360** PRO



“

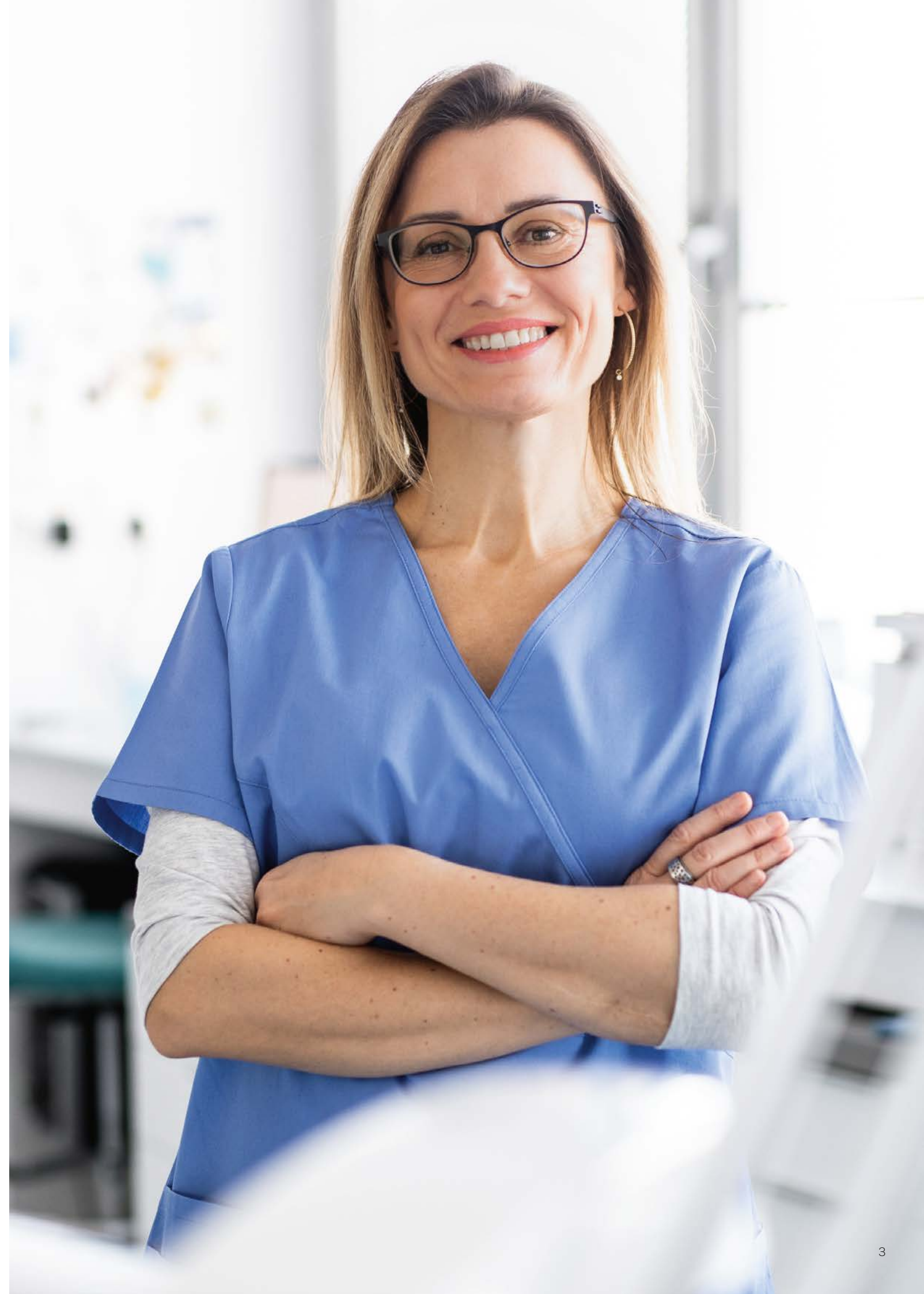
As with everything we do, Miele's thermal disinfectors are so important for our practice because our day-to-day work requires a high level of hygiene and cleanliness.

The comprehensive service, starting with planning and extending to maintenance, also makes Miele **360PRO** a reliable partner.

Actually, it's exactly the same as with your teeth: they have to be kept in top condition for an entire lifetime.

”

Dentalklinik Gütersloh, Germany





# A Precise and Reliable Instrument: **360PRO**

Discover our holistic system solutions. Every smile is a success that we strive for. To ensure that radiant and healthy smiles are the top priority in your dental practice, we offer you 360PRO.

## 1 Consultancy

Are you looking to set up the new complete solution? We will advise you on everything from determining your needs and calculating profitability to planning and process optimisation.

## 2 Machines

For the optimal cleaning, disinfection and sterilisation of your instruments, and the hygienic cleaning of work clothes and staff uniforms.

## 3 Process chemicals

Discover process chemicals that are perfectly matched to your equipment, as well as suitable detergents and care products for textiles and dishes in your staff rooms.

## 4 Components

We have a wide range of components designed specifically for your instruments so that you and your team can carry out your daily work more safely and efficiently.

## 5 Digital solutions

Machines connected to process documentation software and to Miele MOVE enable full transparency of machine usage and direct service support.

## 6 Service

Whether you need advice on application technology, repairs or annual maintenance – our Service team will ensure that your machines never stand still.



# Your Clinic. Your Patients. **Our 360PRO Solution.**

360PRO is a complete solution for the professional reprocessing of instruments that meets the highest standards. With high-performance machines, customised process chemicals, modern software and excellent technical support that optimise instrument reprocessing and thus ensure high hygiene standards and instrument maintenance.



## **More reliable**

It all starts with the dental chair, where patients must have trust in safe and hygienic processes. With all-round trusted solutions you can provide seamless instrument reprocessing, so your staff and patients can fully trust they are in safe hands.

## **More durable**

Dedicated programmes, inserts for specific instruments, as well as reliable Service maintenance. It all ensures that your instruments and your machines are preserved to last longer.

## **More efficient**

Thanks to cutting-edge technology in instrument reprocessing and digital solutions, you will be able to optimise workflows while meeting all relevant international standards for instrument hygiene.

## **More precise**

Dedicated inserts, process chemicals, and programmes especially designed for different types of instruments ensure impeccable cleaning, disinfection, and sterilisation results. Service maintenance ensures that your machines experience no downtime, improving precision and performance in your work.

## **More hygienic**

Solutions that reduce manual handling and provide full sterile storage ensure high levels of hygiene in your reprocessing room, making instruments readily available for the next treatment.

## **More sustainable**

Minimum downtime and maximum performance thanks to Miele quality and Service. We care for your instruments and machines to last longer.

Programmes optimised to use less water, electricity, and reprocessing chemicals reduce the environmental footprint of your clinic.

# We Specialise in Your Requirements.

Miele Professional offers thermal disinfectors and sterilizers with the ideal capacity for all clinics and practices, and with inserts and programmes for all instrument sets. From small benchtop to large-chamber, including a range of undercounter solutions. Whether you are looking to create a reprocessing room from scratch or upgrade your current set-up, we have solutions to meet your needs.

## Ideally equipped

We offer thermal disinfectors and sterilisers with a range of capacities to meet the needs of different practices.

## Expertise across the board

Miele Professional machines are universalists and specialists at the same time. Performance, design, and ease of use are always the same, but each machine is engineered to be tailored to your needs. Whether you specialise in orthodontics, implantology or endodontics, so do our Miele Professional machines.

## Perfectly adjusted

In addition, there are matching baskets and inserts for all loading options. Depending on the instruments, Miele Professional offers you the perfect care and system cleaning programmes and process chemicals.



Find out more:  
[miele.xy/pro/dental](https://miele.xy/pro/dental)







# Protection Deserves the Best Service.

**Repairs and spare parts**

Our goal is to always rectify any failures as quickly as possible. We are there for you, coordinating appointments and guaranteeing the availability of the appropriate spare parts – even 15 years after the end of series production.

**Regular service**

To prevent faults from occurring in the first place, regular, preventive maintenance is essential. Choose from our range of routine options and benefit from long-term protection for your devices.

**Checks and maintenance**

Regular checks of the process parameters increase operational reliability and ensure a high standard of cleaning results. We are also happy to advise you on optimum machine care.

**Our service is called PROtect.**

PROtect combines comprehensive services, maximum budget control and a smooth supply of spare parts. Our professional team carries out servicing quickly and reliably and ensures optimal installation and constant operational readiness.

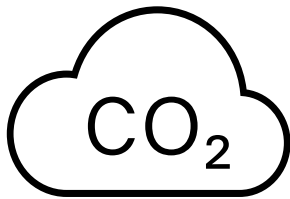


Find out more about our PROtect service solutions.  
[miele.xy/pro/protect](https://miele.xy/pro/protect)



# There Is More To Protect.

We are committed to making our solutions increasingly more sustainable, ensuring that our machines are built to last, and that they have minimum environmental impact at the end of service.



**Reducing CO<sub>2</sub> emissions**

Miele is already climate-neutral in all its locations. We have also committed to reducing CO<sub>2</sub> emissions during the use phase of our products by **15%** between 2019 and 2030.

**Spare parts** are available for up to

**15 years**

after machine production is discontinued.

Appliances were tested for

**15,000**

operating hours.



**Reduced consumption**

of water, energy, and process chemicals.



## Nothing Replaces **Personal Contact.**

Contact us to find out more about Miele Professional and Miele 360PRO – simply give us a call or use the contact form on our website.

**Telephone: 0800 22 44 644**

Mon.-Fri. 08:00 - 17:00



More about Miele Professional  
and contact forms.  
[miele.xy/pro/dental](https://miele.xy/pro/dental)