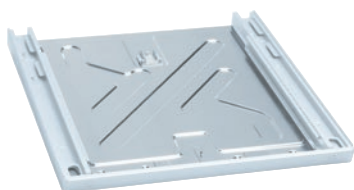


WTV 5061

Stacking kit, Lotus white

For secure installation as a washer-dryer stack.

EAN: 4002513503319 / Material number: 06055070 / Old Material Number: 59506101D



- Suitable for PW 5062, PW 5065, PW 6055, PW 6065, Mopstar 60
- For use with: PT 5135 C/5136/5137 WP, PT 7135 C/7136/7137 WP

Product category	
Washing machines	•
Tumble dryers	•
Machine/accessory category	
PT 5135 C	•
PT 5136	•
PT 5137 WP	•
PT 5140 WP	•
PT 5145 C	•
PT 7135 C	•
PT 7136	•
PT 7137 WP	•
PW 5064	•
PW 5062	•
PW 5065	•
PW 5064 MOPSTAR 60	•
PW 5070	•
PW 6055	•
PW 6065	•
PW 6055 Vario	•
PW 6065 Vario	•
PW 6065 Plus	•
PW 6068 Plus	•
PW 200 Profi@Work	•
PT 200 Profi@Work	•
Product category	
Washer-dryer stacking kit	•
Product properties	
Electrical connection	OHNE
Colour	Lotus White
Dimensions and weight	
External dimensions, net height in mm	100
External dimensions, net width in mm	620
External dimensions, net depth in mm	690
External dimensions, gross height in mm	100
External dimensions, gross width in mm	620
External dimensions, gross depth in mm	690
Net weight [kg]	3,20
Gross weight in kg	4,20