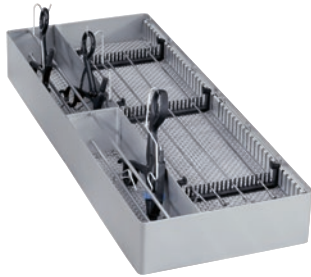


E 457

Insert

for the optimum loading of separable MIS instruments.



- Suitable for 12 handles and work inserts, for example
- Bottom in 3 mm wire mesh, sides closed
- Welded bracket for 8-12 handles, distribution variable
- equipped with 3 bars for storage and locking

EAN: 4002512067331 / Material number: 04618030 / Old Material Number: 69545702D

Product classification	
Washer-disinfectors, medical	•
Large-capacity washer-disinfectors, medical	•
Machine affiliation	
G 7823	•
G 7824	•
G 7825	•
G 7826	•
PG 8527	•
PG 8528	•
PG 8535	•
PG 8536	•
PG 8562	•
PG 8582	•
PG 8582 CD	•
PG 8592	•
Product category	
Insert/module for MIS instruments	•
Product properties	
Material	Stainless steel, Plastic
Colour	Stainless Steel, Black
Area of application	
Reprocessing of MIS instruments	•
Standard electrical connection	
Number of phases	0
Voltage in V	0
Frequency in Hz	0
Total rated load in kW	0,00
Fuse rating in A	0
Dimensions and weight	
External dimensions, net height in mm	192
External dimensions, net width in mm	490
External dimensions, net depth in mm	62
External dimensions, gross height in mm	120
External dimensions, gross width in mm	320
External dimensions, gross depth in mm	540
Net weight in kg	1,75
Gross weight in kg	2,02