

PRI 217 [EL STW]

Rotary iron, electric

With the latest controls and steel-wool padding.



- Performance 50.0 kg/h*, roller diameter 9 7/8 (250) in (mm), working width 65 3/8 (1660) in (mm)
- Ideal ergonomics – height-adjustable and optional base
- State-of-the-art controls – Touch display
- Selection of the most important settings – favorite programs
- Perfect rotary ironing performance – flexibly positioned heater plate

* With 25% residual moisture – performance data according to DIN 11 902: The achievable laundry throughput depends on overall conditions such as, for example, the type of laundry and the experience of the operator.

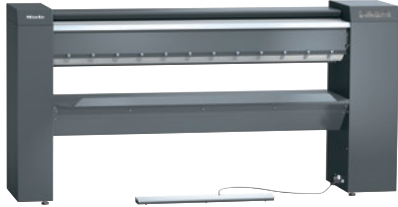
EAN: 4002516423072 / Material number: 11744790 / Old Material Number: 53217014NAM

Construction type and design	
Design	Infeed and outfeed of laundry at the front
Can be set up against a wall	•
Linie	Professional
Outer casing	Iron Grey
Drum diameter in in.(mm)	9 7/8 (250)
Working width in in.(mm)	65 3/8 (1660)
Heater plate material	Aluminium
Padding	Supple steel wool, Leaf-spring padding (option)
Ironer cover	ARAMID needle-felt cloth
Application	
Suitable for the hotel and catering industry	•
Suitable for retirement and care homes	•
Suitable for commercial laundries	•
Suitable for hospitals	•
Suitable for off-shore use	•
Suitable for Marine use	•
Performance data	
Max. ironing performance at 25 % residual moisture in kg/h	50.0
Tested operating hours	20000
Control	
Control system	Touch display
Touch display (optional)	Touch-Display PRI
Program setting	Setting of defined program parameters
Minimum ironer speed, can be set in ft/min	1.5
Maximum ironer speed, can be set in ft/min	4.5
Adjustable temperature	Infinitely variable
Standard electrical connection	
Type of heating	Electric
Electrical connection	3 AC 240V 50-60HZ
Electric heater rating in kW	11.80
Total connected load in kW	12.40
Fuse rating in A	50
Possible voltage variant 1	
Electrical connection	3 AC 220V 50-60HZ
Electric heater rating in kW	9.90
Total connected load in kW	10.50
Fuse rating in A	50
Possible voltage variant 2	
Electrical connection	3 AC 208V 50-60HZ
Electric heater rating in kW	8.90
Total connected load in kW	9.40
Fuse rating in A	50
Dimensions and weight	
External dimensions, height in mm	43 3/4 (1110)
External dimensions, width in mm	88 1/8 (2238)
External dimensions, depth in mm	25 5/8 (650)
External dimensions, gross height in inches	55 11/16 (1414)

PRI 217 [EL STW]

Rotary iron, electric

With the latest controls and steel-wool padding.



EAN: 4002516423072 / Material number: 11744790 / Old Material Number: 53217014NAM

External dimensions, gross width in inches	94 1/2 (2400)
External dimensions, gross depth in inches	33 7/8 (860)
Net weight in kg	417 (189)
Gross weight in lbs.	472 (214)
Maximum floor loading in p/force	1890
Emission values	
Emissions – sound pressure at workplace	<70 dB(A) re 20 µPa
Heat output to the room in Mj/h and BTUs /h	11.80
Features	
Finger guard	•
FlexControl footswitch	•
Feed-in board	•
Laundry pick-off bands	•
Laundry crates	•
Favorites program	•
Incorrect feed recognition	•
Air suspension	•
Pause function	•
High contact pressure	•
Heater plate cleaning and waxing indicator	•
Plinth (optional)	•
Option of ironing when seated	•
APRI 319 care set for the heater plate included in the scope of delivery	•
Appliance-independent accessories	•
Connection options	
Payment system (optional)	•
Peak load cut-out/energy management	•
Standards, test certificates, and symbols	
Complies with Machinery Directive 2006/42/EC	•