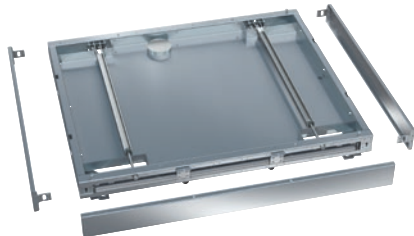


RP 1150

Base, on wheels

For machines 45 in (1150 mm) wide, incl. drip tray no openings for floor drain.



- Suitable for single-door machines, 45 in. (1150 mm) wide
- Castors allow the machine to be pulled forward for servicing
- Only suitable for machines with a drain pump
- Easy access for servicing

EAN: 4002516032472 / Material number: 10941950 / Old Material Number: 69253008D

Product category	
Large-capacity washer-disinfectors, laboratory	•
Machine affiliation	
PLW 8617	•
Product category	
Plinth/stand	•
Product characteristics	
Material	Stainless steel
Color	Stainless Steel
Dimensions and weight	
External dimensions, net height in inches	3 15/16 (100)
External dimensions, net width in inches	39 (990)
External dimensions, net depth in inches	45 5/16 (1150)
External dimensions, gross height in inches	6 3/4 (170)
External dimensions, gross width in inches	41 3/16 (1045)
External dimensions, gross depth in inches	47 1/4 (1200)
Net weight in lbs	79 (35.40)
Gross weight in lbs	97 (43.70)