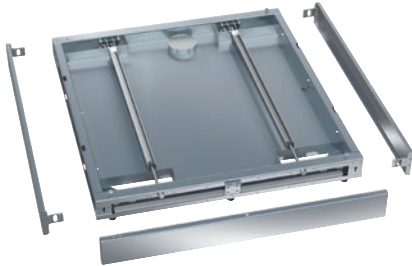


## RP 900

Base, on wheels

For machines 36 in. (900 mm) wide, incl. drip tray no openings for floor drain.



- Suitable for single-door machines, 36 in. (900 mm) wide
- Castors allow the machine to be pulled forward for servicing
- Only suitable for machines with a drain pump
- Easy access for servicing

EAN: 4002516032465 / Material number: 10941940 / Old Material Number: 69253007D

<b>Product category</b>	
Large-capacity washer-disinfectors, laboratory	•
<b>Machine affiliation</b>	
PLW 8615	•
<b>Product category</b>	
Plinth/stand	•
<b>Product characteristics</b>	
Material	Stainless steel
Color	Stainless Steel
<b>Dimensions and weight</b>	
External dimensions, net height in inches	3 15/16 (100)
External dimensions, net width in inches	35 7/16 (900)
External dimensions, net depth in inches	39 (990)
External dimensions, gross height in inches	6 1/8 (155)
External dimensions, gross width in inches	37 1/16 (940)
External dimensions, gross depth in inches	47 1/4 (1200)
Net weight in lbs	68 (30.80)
Gross weight in lbs	71 (32.00)