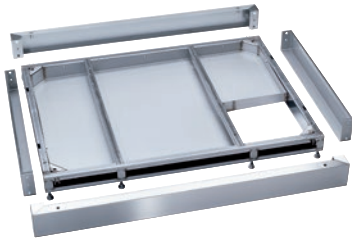


FP 900

Toe-kick

Incl. drip tray and openings for connecting services.



- Suitable for 2-door machines, 36 in. (900 mm) wide
- Frame with integrated stainless steel drip tray
- Suitable for machines with a drain valve or drain pump

EAN: 4002516031925 / Material number: 10941870 / Old Material Number: 69253005D

Product category	
Large-capacity washer-disinfectors, laboratory	•
Machine affiliation	
PLW 8616	•
Product category	
Plinth/stand	•
Product characteristics	
Material	Stainless steel
Color	Stainless Steel
Dimensions and weight	
External dimensions, net height in inches	3 15/16 (100)
External dimensions, net width in inches	35 7/16 (900)
External dimensions, net depth in inches	39 (990)
External dimensions, gross height in inches	6 3/8 (161)
External dimensions, gross width in inches	36 13/16 (935)
External dimensions, gross depth in inches	47 1/4 (1200)
Net weight in lbs	56 (25.20)
Gross weight in lbs	81 (36.30)