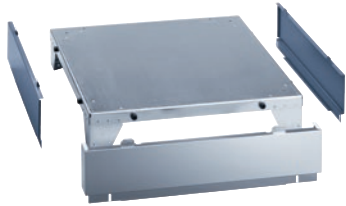


UG 6020

Closed plinth

For ergonomic loading and unloading of the washing machine.

EAN: 4002513716726 / Material number: 06200400 / Old Material Number: 59602001D



- Can be screwed onto the washer-extractor

Product category	
Washing machines	•
Machine/accessory category	
PW 6207	•
Product category	
Plinth/stand	•
Product characteristics	
Electrical connection	OHNE
Material	Stainless steel, Powder coated galvanised steel
Color	Front st. st., sides Octoblue
Dimensions and weight	
External dimensions, net height in inches	9 7/8 (250)
External dimensions, net width in inches	35 7/8 (910)
External dimensions, net depth in inches	39 7/8 (1010)
External dimensions, gross height in inches	11 1/8 (280)
External dimensions, gross width in inches	36 5/8 (930)
External dimensions, gross depth in inches	41 (1040)
Net weight [lbs]	59 (26.60)
Gross weight in lbs	85 (38.40)