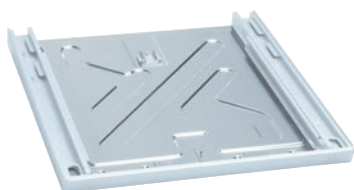


WTV 5061

Stacking kit, Lotus white

For secure installation as a washer-dryer stack.

EAN: 4002513503319 / Material number: 06055070 / Old Material Number: 59506101D



- Suitable for PW 5062, PW 5065, PW 6055, PW 6065, Mopstar 60
- Combinable with: PT 5135 C/5136/5137 WP, PT 7135 C/7136/7137 WP

<b>Product category</b>	
Washing machines	•
Tumble dryers	•
<b>Machine/accessory category</b>	
PT 5135 C	•
PT 5136	•
PT 5137 WP	•
PT 5140 WP	•
PT 5145 C	•
PT 7135 C	•
PT 7136	•
PT 7137 WP	•
PW 5064	•
PW 5062	•
PW 5065	•
PW 5064 MOP STAR 60	•
PW 5070	•
PW 6055	•
PW 6065	•
PW 6055 Vario	•
PW 6065 Vario	•
PW 6065 Plus	•
PW 6068 Plus	•
PW 200 Profi@Work	•
PT 200 Profi@Work	•
<b>Product category</b>	
Washer-dryer stacking kit	•
<b>Product characteristics</b>	
Electrical connection	OHNE
Color	Lotus White
<b>Dimensions and weight</b>	
External dimensions, net height in inches	4 (100)
External dimensions, net width in inches	24 1/2 (620)
External dimensions, net depth in inches	27 1/4 (690)
External dimensions, gross height in inches	4 (100)
External dimensions, gross width in inches	24 1/2 (620)
External dimensions, gross depth in inches	27 1/4 (690)
Net weight [lbs]	8 (3.20)
Gross weight in lbs	10 (4.20)