

TED645WP EcoSpeed&9kg

T1 heat-pump dryer:

9 kg | DirectSensor | DryCare 40 | HygieneDry | Miele@home



- Tested for 20 years of perfect laundry care*
- Economical and gentle drying – heat-pump technology
- DryCare 40 – dries almost anything that can be washed at 40 °C
- Faster drying combined with maximum energy efficiency – EcoSpeed
- HygieneDry removes up to 99.99 % of bacteria* and 99.9 % of viruses**

* During the development phase of the W1 washing machine series, Miele tested models and core components in 5000 wash loads (= 5 wash loads per week for 50 weeks per year) in various programmes. More: [miele.com/20years](https://www.miele.com/20years)

** Tested for *Bacillus subtilis* and *Saccharomyces cerevisiae* bacteria in the HygieneDry drying level with half load. A description of the relevant methodology can be found at the following link: https://www.miele.com/media/ex/com/Testkriterien_Hygiene-Siegel_T1.pdf



EAN: 4002516880011 / Material number: 12736700 / Old Material Number: 12ED6452IRL

Construction type

Suitable for stacking	•
Side-by-side	•
Slot-in	•
Can be built-under	•
Door hinge	left

Model

Product brand	T1 Chrome Edition
Heat pump dryer	•

Design

Appliance colour	Lotus white
Control panel colour	Lotus white
Door design	Graphite grey PearlFinish
Rotary selector colour	Lotus White
Control panel version	Straight
Control type	Rotary control
Display	DirectSensor white, 7 segment

Drying results

PerfectDry precision drying	•
FragranceDos fragrance system	•
Intelligent drum reversal	•
HygieneDry	•

Gentle laundry care

Honeycomb drum	•
Load in kg	9.0

User convenience

Networking with Miele@home	•
Wash2Dry	•
Delay start up to 24 hours	•
Time left display	•
Programme sequence indicator	No
Drum lighting	LED
Condensate container	•
Integrated condensed water drainage	•
AddLoad	•

Efficiency and sustainability

Energy efficiency class (A+++ – D)	A+++
Annual energy consumption in kWh	194
Duration in minutes in the standard programme	187
Noise in the Cottons programme with full load in db(A) re 1 pW	66
Condensation efficiency class	A
Energy consumption in kWh in the Cottons Normal dry standard programme with a full load	1.60
EcoDry technology	•
Maintenance-free heat exchanger	•
ProfiEco motor	•

TED645WP EcoSpeed&9kg

T1 heat-pump dryer:

9 kg | DirectSensor | DryCare 40 | HygieneDry | Miele@home



EAN: 4002516880011 / Material number: 12736700 /

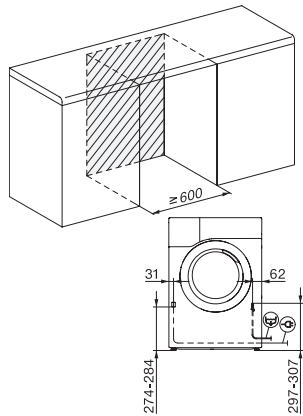
Old Material Number: 12ED6452IRL

EcoSpeed	•
Drying programmes	
Cottons (coloureds)	•
ECO	•
Minimum iron	•
Delicates	•
Shirts	•
Woollens handcare	•
Express	•
Proofing	•
Bed linen	•
Warm air/DryFresh	•
Drying extras	
Anti-crease	•
Buzzer	•
DryCare 40	•
Quality	
Soft ribs	•
Safety	
PIN-Code	•
Empty out container indicator	•
Clean filter indication	•
Optical interface	•
Technical data	
Dimensions in mm (width)	596
Dimensions in mm (height)	850
Dimensions in mm (depth)	636
Appliance depth in mm with opened door	1054
Weight in kg	53
Total rated load in kW	1.10
Voltage in V	220-240
Fuse rating in A	10
Frequency in Hz	50
Length of supply lead in m	2.0
Hermetically sealed	•
Type of coolant	R290
Refrigerant quantity in kg	0.14
Refrigerant global warming potential in CO ₂ e	3
Appliance global warming potential in CO ₂ e	0.42
Replacing lamps	Service
Accessories included	
Fragrance flacon	•
Voucher for a second fragrance flacon	•

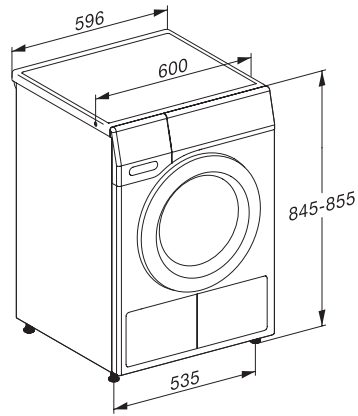
TED645WP EcoSpeed&9kg

T1 heat-pump dryer:

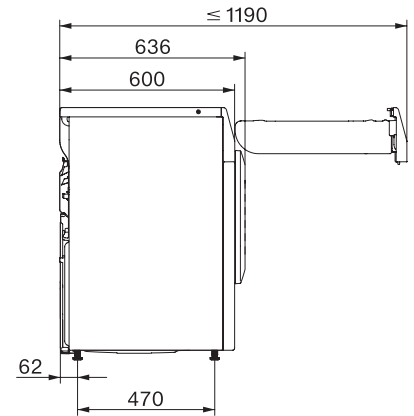
9 kg | DirectSensor | DryCare 40 | HygieneDry | Miele@home



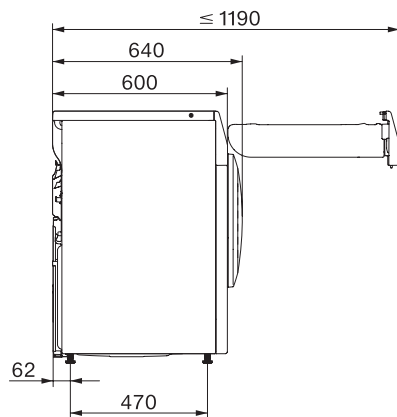
T1 installation drawing, slanted fascia or straight fascia, measures in mm



T1 drawing, slanted fascia or straight fascia, measures in mm



T1 drawing, slanted fascia or straight fascia, with porthole, measures in mm



T1 drawing, slanted fascia or straight fascia, without porthole, measures in mm