

TWW780WP Passion

T1 heat-pump dryer:

The Miele all-rounder for the highest demands and very gentle laundry care.



- M Touch – the appliance is controlled by tapping or swiping
- Less ironing, more freshness – SteamFinish
- Pleasantly quiet drying – SilenceDrum
- Best care for delicate textiles – Miele dryer basket
- Miele@home – clever networking opens up new possibilities\*

\* Additional digital offer from Miele & Cie. KG. All smart applications are made possible with the Miele@home system. The range of functions can vary depending on the model and the country.

**A+++**

EAN: 4002516475989 / Material number: 11876930 / Old Material Number: 12WW7802GB

| Construction type   |                             |
|---|-----------------------------|
| Suitable for stacking   | •                           |
| Side-by-side  | •                           |
| Slot-in   | •                           |
| Door hinge  | left, Reversible            |
| Convertible door hinging  | •                           |
| Model   |                             |
| Product brand   | T1 White Edition            |
| Heat pump dryer   | •                           |
| Design  |                             |
| Appliance colour  | Lotus white                 |
| Control panel colour  | Lotus white                 |
| Door design   | Alu silver with chrome ring |
| Control panel version   | 5° incline                  |
| Control type  | Touch controls              |
| Display   | MTouch                      |
| Drying results  |                             |
| PerfectDry precision drying   | •                           |
| FragranceDos <sup>2</sup> fragrance system                                      | •                           |
| Intelligent drum reversal   | •                           |
| Proven hygiene  | •                           |
| Proven virus hygiene  | •                           |
| Gentle laundry care   |                             |
| SilenceDrum   | •                           |
| Load in kg  | 9.0                         |
| User convenience  |                             |
| Networking with Miele@home  | •                           |
| Wash2Dry  | •                           |
| Delay start up to 24 hours  | •                           |
| Time left display   | •                           |
| Time of day display   | •                           |
| Programme sequence indicator  | Yes                         |
| Drying assistant  | •                           |
| Information text  | •                           |
| Favourite programmes  | •                           |
| Drum lighting   | LED                         |
| MultiLingua   | •                           |
| Acoustics package for the lowest sound emissions                                | •                           |
| Condensate container  | •                           |
| Integrated condensed water drainage   | •                           |
| AddLoad   | •                           |
| Efficiency and sustainability   |                             |
| Energy efficiency class (A+++ – D)  | A+++                        |
| More economical than the threshold value (24) for energy efficiency rating A+++ | 10%                         |
| Annual energy consumption in kWh  | 174                         |
| Duration in minutes in the standard programme                                   | 220                         |
| Noise in the Cottons programme with full load in db(A) re 1 pW                  | 62                          |
| Condensation efficiency class   | A                           |

TWW780WP Passion

T1 heat-pump dryer:

The Miele all-rounder for the highest demands and very gentle laundry care.



EAN: 4002516475989 / Material number: 11876930 / Old Material Number: 12WW7802GB

|   |      |
|---|------|
| Energy consumption in kWh in the Cottons Normal dry standard programme with a full load | 1.47 |
| EcoFeedback   | •    |
| EcoDry technology   | •    |
| Maintenance-free heat exchanger   | •    |
| ProfiEco motor  | •    |
| <b>Drying programmes</b>  |      |
| Automatic plus  | •    |
| Cottons (coloureds)   | •    |
| Minimum iron  | •    |
| Delicates   | •    |
| Shirts  | •    |
| Silks handcare  | •    |
| Woollens handcare   | •    |
| Express   | •    |
| Denim   | •    |
| Outerwear   | •    |
| Proofing  | •    |
| Sportswear  | •    |
| Standard pillows  | •    |
| Large pillows   | •    |
| Cottons hygiene   | •    |
| Cool air  | •    |
| Warm air  | •    |
| Basket programme  | •    |
| Extra quiet   | •    |
| Pre-Ironing   | •    |
| Bed linen   | •    |
| Steam care  | •    |
| <b>Extras</b>   |      |
| Anti-crease   | •    |
| Gentle tumble   | •    |
| Freshen up  | •    |
| ECO   | •    |
| Buzzer  | •    |
| Quick   | •    |
| DryCare 40  | •    |
| DryFresh  | •    |
| PowerFresh  | •    |
| <b>Quality</b>  |      |
| Soft ribs   | •    |
| <b>Safety</b>   |      |
| PIN-Code  | •    |
| Empty out container indicator   | •    |
| Clean filter indication   | •    |
| Optical interface   | •    |
| <b>Technical data</b>   |      |
| Dimensions in mm (width)  | 596  |
| Dimensions in mm (height)   | 850  |
| Dimensions in mm (depth)  | 643  |
| Appliance depth in mm with opened door  | 1077 |

T1 heat-pump dryer:

The Miele all-rounder for the highest demands and very gentle laundry care.



EAN: 4002516475989 / Material number: 11876930 / Old Material Number: 12WV7802GB

|   |                  |
|---|------------------|
| Weight in kg  | 62               |
| Total rated load in kW                                    | 1.10             |
| Voltage in V  | 220-240          |
| Fuse rating in A  | 13               |
| Frequency in Hz   | 50               |
| Length of supply lead in m                                | 2.0              |
| Contains fluorinated greenhouse gases                     | •                |
| Hermetically sealed                                       | •                |
| Type of coolant   | R134a            |
| Refrigerant quantity in kg                                | 0.48             |
| Refrigerant global warming potential in CO <sub>2</sub> e | 1430             |
| Appliance global warming potential in CO <sub>2</sub> e   | 686.00           |
| Replacing lamps   | Customer Service |
| <b>Accessories supplied</b>                               |                  |
| Fragrance flacon  | •                |
| Voucher for a second fragrance flacon                     | •                |
| Voucher for a dryer basket                                | •                |
| <b>Available display languages</b>                        |                  |

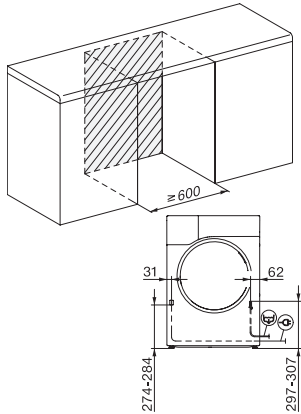
Available display languages via MultiLingua

bahasa malaysia, dansk,  
deutsch, english (AU),  
english (CA), english (GB),  
english (US), español,  
français (CA), français  
(FR), hrvatski, italiano,  
magyar, nederlands,  
norsk, polski, português,  
русский, română,  
slovenčina, slovenščina,  
srpski, suomi, svenska,  
türkçe, українська, čeština,  
ελληνικά,

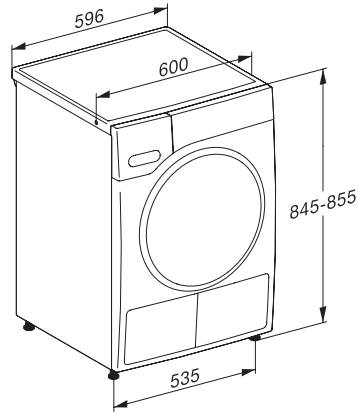
TWW780WP Passion

T1 heat-pump dryer:

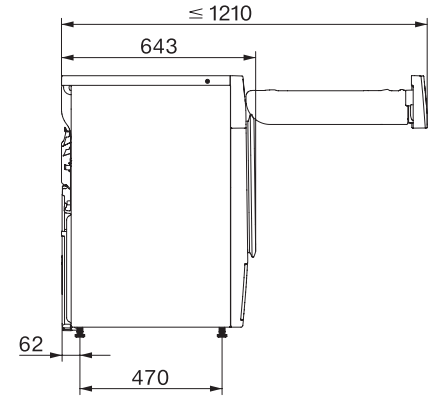
The Miele all-rounder for the highest demands and very gentle laundry care.



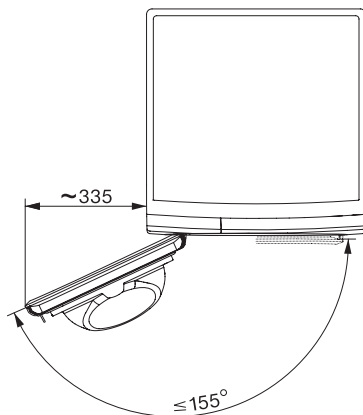
T1 installation drawing, facia 5 degree, measures in mm



T1 drawing, facia 5 degree, measures in mm



T1 drawing, facia 5 degree, with porthole, measures in mm



T1 drawing, facia 5 degree, measures in mm