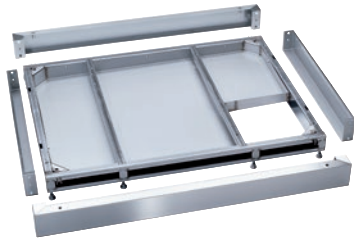


FP 900

Plinth

Incl. drip tray and openings for connecting services.



- Suitable for 2-door machines, 900 mm wide
- Frame with integrated stainless steel drip tray
- Suitable for machines with a drain valve or drain pump

EAN: 4002516031925 / Material number: 10941870 / Old Material Number: 69253005D

Product category	
Large-capacity washer-disinfectors, laboratory	•
Machine affiliation	
PLW 8616	•
Product category	
Plinth/base	•
Product properties	
Material	Stainless steel
Colour	Stainless Steel
Dimensions and weight	
External dimensions, net height in mm	100
External dimensions, net width in mm	900
External dimensions, net depth in mm	990
External dimensions, gross height in mm	161
External dimensions, gross width in mm	935
External dimensions, gross depth in mm	1200
Net weight in kg	25.20
Gross weight in kg	36.30