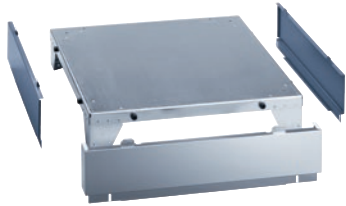


UG 6010

Closed plinth

For ergonomic loading and unloading of the washing machine.

EAN: 4002513716665 / Material number: 06200340 / Old Material Number: 59601001D



- Can be screwed onto the washer-extractor

Product classification	
Washing machines	•
Machine/accessory category	
PW 6107	•
Product category	
Plinth/base	•
Product properties	
Electrical connection	OHNE
Material	Stainless steel, Powder coated galvanised steel
Colour	Front st. st., sides Octoblue
Dimensions and weight	
External dimensions, net height in mm	160
External dimensions, net width in mm	790
External dimensions, net depth in mm	810
External dimensions, gross height in mm	200
External dimensions, gross width in mm	800
External dimensions, gross depth in mm	820
Net weight [kg]	17.60
Gross weight in kg	22.70