

TWF760WP EcoSpeed&8kg

T1 heat-pump dryer:

with A+++ and DryCare 40 for efficient yet gentle drying.



- Save time sorting your laundry; DryCare 40 is perfect for a 40 °C wash*
- EcoSpeed efficiently reduces the drying time by 20 minutes**
- FragranceDos² ensures that your laundry smells fresh after drying***
- EcoDry ensures efficient performance over the entire tumble dryer service life
- Complete app control of your tumble dryer with Miele@home****

* Not suitable for woollens or silks.

** Compared to Miele tumble dryers without EcoSpeed with the same load size and energy efficiency class. Tested in the "Cottons" programme with a full load size.

*** Patent EP 2 431 516

**** Additional digital offer from Miele & Cie. KG. All smart applications are made possible with the Miele@home system. The range of functions can vary depending on the model and the country.

A+++

EAN: 4002516476320 / Material number: 11871870 / Old Material Number: 12WF7602GB

Construction type

Suitable for stacking	•
Side-by-side	•
Slot-in	•
Door hinge	left, Reversible
Convertible door hinging	•

Model

Product brand	T1 White Edition
Heat pump dryer	•

Design

Appliance colour	Lotus white
Control panel colour	Lotus white
Door design	Obsidian black with chrome ring
Rotary selector colour	Lotus White / Chrome ring
Control panel version	5° inclined
Control type	Rotary control
Display	DirectSensor white, 7 segment

Drying results

PerfectDry precision drying	•
FragranceDos ² fragrance system	•
Intelligent drum reversal	•
Proven hygiene	•
Proven virus hygiene	•

Gentle laundry care

Honeycomb drum	•
Load in kg	8.0

User convenience

Networking with Miele@home	•
Wash2Dry	•
Delay start up to 24 hours	•
Time left display	•
Programme sequence indicator	No
Drum lighting	LED
Condensate container	•
Integrated condensed water drainage	•
AddLoad	•

Efficiency and sustainability

Energy efficiency class (A+++ – D)	A+++
Annual energy consumption in kWh	161
Duration in minutes in the standard programme	165
Noise in the Cottons programme with full load in db(A) re 1 pW	66
Condensation efficiency class	A
Energy consumption in kWh in the Cottons Normal dry standard programme with a full load	1.32
EcoDry technology	•
Maintenance-free heat exchanger	•
ProfiEco motor	•
EcoSpeed	•

TWF760WP EcoSpeed&8kg

T1 heat-pump dryer:

with A+++ and DryCare 40 for efficient yet gentle drying.



EAN: 4002516476320 / Material number: 11871870 / Old Material Number: 12WF7602GB

Drying programmes

Cottons (coloureds)
Cottons arrow
Minimum iron
Delicates
Shirts
Woollens handcare
Express
Proofing
Bed linen
Warm air/DryFresh

Drying extras

Anti-crease
Buzzer
DryCare 40

Quality

Soft ribs

Safety

PIN-Code
Empty out container indicator
Clean filter indication
Optical interface

Technical data

Dimensions in mm (width) 596
Dimensions in mm (height) 850
Dimensions in mm (depth) 643
Appliance depth in mm with opened door 1077
Weight in kg 56
Total rated load in kW 1.10
Voltage in V 220-240
Fuse rating in A 13
Frequency in Hz 50
Length of supply lead in m 2.0
Hermetically sealed
Type of coolant R290
Refrigerant quantity in kg 0.14
Refrigerant global warming potential in CO₂ e 3
Appliance global warming potential in CO₂ e 0.42
Replacing lamps Service

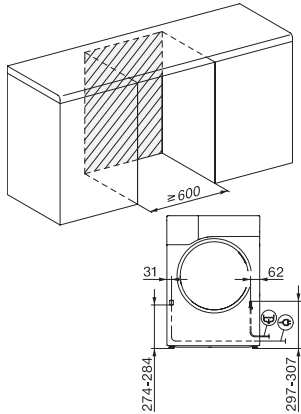
Accessories included

Fragrance flacon
Voucher for a second fragrance flacon

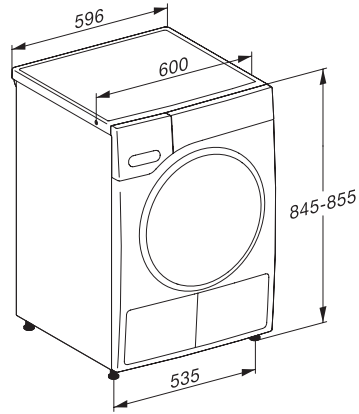
TWF760WP EcoSpeed&8kg

T1 heat-pump dryer:

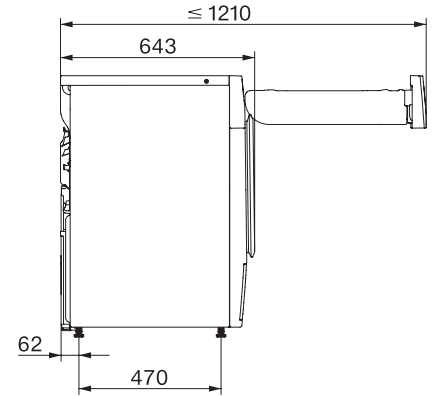
with A+++ and DryCare 40 for efficient yet gentle drying.



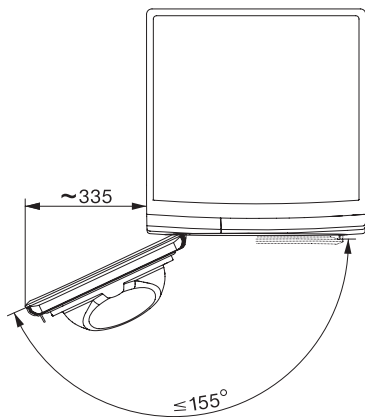
T1 installation drawing, facia 5 degree, measures in mm



T1 drawing, facia 5 degree, measures in mm



T1 drawing, facia 5 degree, with porthole, measures in mm



T1 drawing, facia 5 degree, measures in mm