

TEF765WP EcoSpeed&8kg

T1 heat-pump dryer:

with A+++ and DryCare 40 for efficient yet gentle drying.



- Save time sorting your laundry; DryCare 40 is perfect for a 40 °C wash*
- EcoSpeed efficiently reduces the drying time by 20 minutes**
- FragranceDos² ensures that your laundry smells fresh after drying***
- EcoDry ensures efficient performance over the entire tumble dryer service life
- Versatile and convenient thanks to networking – Miele@home

* Not suitable for woollens or silks.

** Compared to Miele tumble dryers without EcoSpeed with the same load size and energy efficiency class. Tested in the "Cottons" programme with a full load size.

*** Patent EP 2 431 516

A+++

EAN: 4002516476245 / Material number: 11871820 / Old Material Number: 12EF7652GB

Construction type

Suitable for stacking
Side-by-side
Slot-in
Can be built-under
Door hinge

•
•
•
•
left

Model

Product brand
Heat pump dryer

T1 Chrome Edition
•

Design

Appliance colour
Control panel colour
Rotary selector colour
Control panel version
Control type
Display

Lotus white
Lotus white
Lotus White / Chrome ring
Straight
Rotary control
DirectSensor white,
7 segment

Drying results

PerfectDry precision drying
FragranceDos² fragrance system
Intelligent drum reversal
Proven hygiene
Proven virus hygiene

•
•
•
•
•

Gentle laundry care

Honeycomb drum
Load in kg

•
8.0

User convenience

Networking with Miele@home
Wash2Dry
Delay start up to 24 hours
Time left display
Programme sequence indicator
Drum lighting
Condensate container
Integrated condensed water drainage
AddLoad

•
•
•
•
No
LED
•
•
•

Efficiency and sustainability

Energy efficiency class (A+++ – D)
Annual energy consumption in kWh
Duration in minutes in the standard programme
Noise in the Cottons programme with full load in db(A) re 1 pW
Condensation efficiency class
Energy consumption in kWh in the Cottons Normal dry standard programme with a full load
EcoDry technology
Maintenance-free heat exchanger
ProfiEco motor
EcoSpeed

A+++
161
165
66
A
1.32
•
•
•
•

Drying programmes

Cottons (coloureds)

•

TEF765WP EcoSpeed&8kg

T1 heat-pump dryer:

with A+++ and DryCare 40 for efficient yet gentle drying.



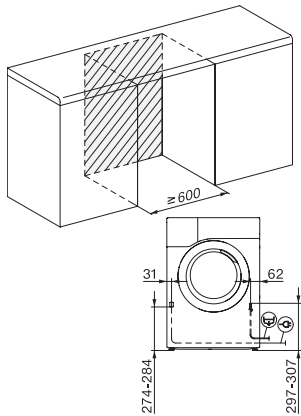
EAN: 4002516476245 / Material number: 11871820 / Old Material Number: 12EF7652GB

Cottons arrow	•
Minimum iron	•
Delicates	•
Shirts	•
Woollens handcare	•
Express	•
Proofing	•
Bed linen	•
Warm air/DryFresh	•
Drying extras	
Anti-crease	•
Buzzer	•
DryCare 40	•
Quality	
Soft ribs	•
Safety	
PIN-Code	•
Empty out container indicator	•
Clean filter indication	•
Optical interface	•
Technical data	
Dimensions in mm (width)	596
Dimensions in mm (height)	850
Dimensions in mm (depth)	636
Appliance depth in mm with opened door	1054
Weight in kg	56
Total rated load in kW	1.10
Voltage in V	220-240
Fuse rating in A	13
Frequency in Hz	50
Length of supply lead in m	2.0
Hermetically sealed	•
Type of coolant	R290
Refrigerant quantity in kg	0.14
Refrigerant global warming potential in CO ₂ e	3
Appliance global warming potential in CO ₂ e	0.42
Replacing lamps	Service
Accessories included	
Fragrance flacon	•
Voucher for a second fragrance flacon	•

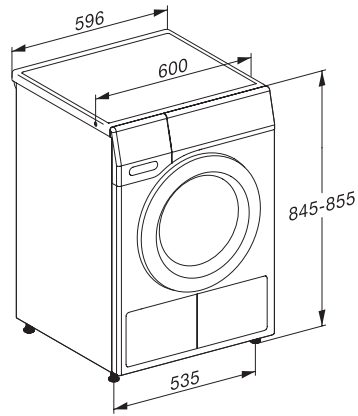
TEF765WP EcoSpeed&8kg

T1 heat-pump dryer:

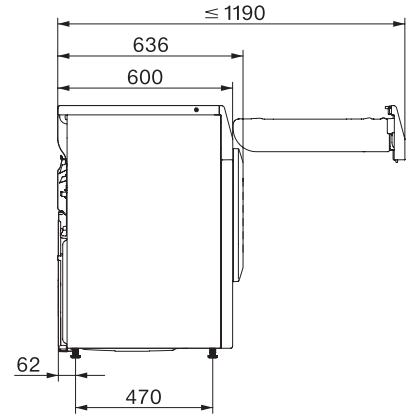
with A+++ and DryCare 40 for efficient yet gentle drying.



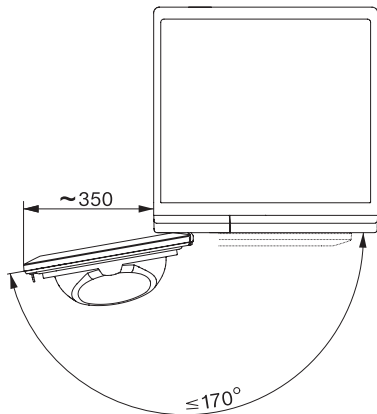
T1 installation drawing, slanted facia or straight facia, measures in mm



T1 drawing, slanted facia or straight facia, measures in mm



T1 drawing, slanted facia or straight facia, with porthole, measures in mm



T1 drawing, slanted facia or straight facia, measures in mm