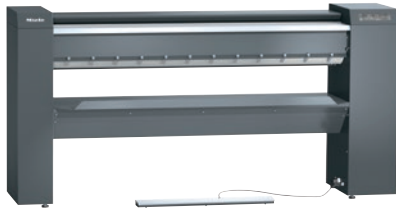


PRI 217 [EL STW FLT]

Rotary ironer, electrically heated

With the latest controls, steel wool padding and flexible laundry feed.



- Performance 60.0 kg/h*, roller diameter 250 mm, working width 1660 mm
- Easily adjustable – flexible return feed
- Ideal ergonomics – height-adjustable and optional plinth
- State-of-the-art controls – Touch display
- Perfect rotary ironing performance – flexibly positioned heater plate

* With 25 % residual moisture – performance data according to DIN 11902: the achievable ironing performance depends on overall conditions such as, for example, the type of laundry and the experience of the operator.

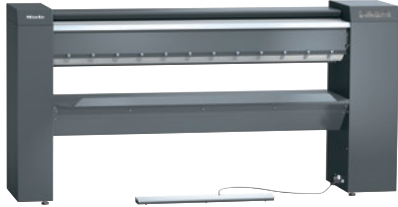
EAN: 4002516423034 / Material number: 11744750 / Old Material Number: 53217010EU

Construction type and version	
Construction type	Laundry infeed at the front, laundry outfeed at the back
Can be set up against a wall	•
Range	Professional
Outer casing	Iron grey
Roller diameter in mm	250
Working width in mm	1660
Heater plate material	Aluminium
Padding	Supple steel wool
Ironer cover	ARAMID needle-felt cloth
Application	
Suitable for the hotel and catering industry	•
Suitable for retirement and care homes	•
Suitable for launderettes	•
Suitable for residential homes and apartments	•
Suitable for commercial laundries	•
Suitable for hospitals	•
Suitable for offshore use	•
Suitable for marine use	•
Suitable for camp sites	•
Performance data	
Max. ironing performance at 25 % residual moisture in kg/h	60.0
Tested operating hours	20000
Control system	
Control system	Touch display
Touch display (optional)	Touch-Display PRI
Programme setting	Setting of defined programme parameters
Minimum ironing speed, controlled in m/min	1.5
Maximum ironing speed, controlled in m/min	4.5
Adjustable temperature	Infinitely variable
Standard electrical connection	
Heating type	Electric
Electrical connection	3N AC 400V 50-60HZ
Electric heater rating in kW	11.00
Total connected load in kW	11.60
Fuse rating in A	25
Dimensions and weight	
External dimensions, height in mm	1110
External dimensions, width in mm	2238
External dimensions, depth in mm	650
External dimensions, gross height in mm	1414
External dimensions, gross width in mm	2400
External dimensions, gross depth in mm	860
Net weight in kg	189
Gross weight in kg	214
Maximum floor load in N/m ²	1890
Emissions data	
Emission sound pressure level in the workplace	<70 dB(A) re 20 µPa

PRI 217 [EL STW FLT]

Rotary ironer, electrically heated

With the latest controls, steel wool padding and flexible laundry feed.



EAN: 4002516423034 / Material number: 11744750 / Old Material Number: 53217010EU

Heat dissipation into the room in MJ/h	11.00
Features	
Automatic finger guard	•
FlexControl footswitch	•
Feed-in board	•
Pick-off bands	•
Laundry box	•
Flexible laundry feed	•
Favourite programme	•
Incorrect feed recognition	•
Air suspension	•
Pause function	•
High contact pressure	•
Clean and wax heater plate indicator (op	•
Plinth (optional)	•
Option of ironing when seated	•
APRI 319 care set for the heater plate included in the scope of delivery	•
Machine-independent accessories	•
Connection options	
Payment system (optional)	•
Peak load cut-out/energy management	•
Standards, test certificates and symbols	
VDE	•
CE	•
EAC	•
WEEE	•
VDE-EMC	•
RCM	•
Splash-proof IPX0	•
UKCA	•
Complies with Machinery Directive 2006/42/EC	•