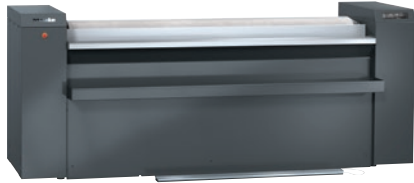


PRI 418 [G LAM]

Rotary ironer, gas heated

With spring padding for optimum finishing results.



- Performance 76.0 kg/h*, roller diameter 365 mm, working width 1750 mm
- Outstanding finish results thanks to HPC heater plate
- State-of-the-art controls – Touch display
- Selection of the most important settings – favourite programmes
- Perfect rotary ironing performance – flexibly positioned heater plate

* With 25 % residual moisture – performance data according to DIN 11902: the achievable ironing performance depends on overall conditions such as, for example, the type of laundry and the experience of the operator.

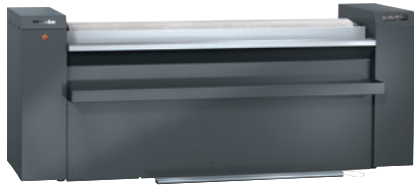
EAN: 4002516367819 / Material number: 11606980 / Old Material Number: 53418112EU

Construction type and version	
Construction type	Laundry infeed at the front, laundry outfeed at the back
Range	Professional
Outer casing	Iron grey
Roller diameter in mm	365
Working width in mm	1750
Heater plate material	Aluminium
Padding	Leaf-spring padding
Ironer cover	ARAMID needle-felt cloth
Application	
Suitable for the hotel and catering industry	•
Suitable for retirement and care homes	•
Suitable for commercial laundries	•
Suitable for hospitals	•
Suitable for offshore use	•
Performance data	
Max. ironing performance at 25 % residual moisture in kg/h	76.0
Tested operating hours	20000
Control system	
Control system	Touch display
Touch display (optional)	Touch-Display PRI
Programme setting	Setting of defined programme parameters
Minimum ironing speed, controlled in m/min	1.5
Maximum ironing speed, controlled in m/min	5.4
Adjustable temperature	Infinitely variable
Standard electrical connection	
Heating type	Gas
Electrical connection	3N AC 400V 50HZ
Electric heater rating in kW	0.00
Gas heater rating in kW	28.00
Total connected load in kW	1.00
Fuse rating in A	16
Dimensions and weight	
External dimensions, height in mm	1110
External dimensions, width in mm	2469
External dimensions, depth in mm	1441
External dimensions, gross height in mm	1388
External dimensions, gross width in mm	2576
External dimensions, gross depth in mm	1096
Net weight in kg	413
Gross weight in kg	490
Maximum floor load in N/m ²	4052
Emissions data	
Emission sound pressure level in the workplace	60 dB(A) re 20 µPa
Heat dissipation into the room in MJ/h	13.70
Features	
Patented EasyFold out-feed table	•
Outfeed table extension (optional)	•

PRI 418 [G LAM]

Rotary ironer, gas heated

With spring padding for optimum finishing results.



EAN: 4002516367819 / Material number: 11606980 / Old Material Number: 53418112EU

HPC heater plate	•
Automatic finger guard	•
FlexControl footswitch	•
In-feed table	•
Pick-off bands	•
Laundry box	•
Laundry return feed (optional)	•
Cover (optional)	•
Favourite programme	•
Incorrect feed recognition	•
Air suspension	•
Pause function	•
High contact pressure	•
Clean and wax heater plate indicator (op	•
Emergency switch-off	•
APRI 319 care set for the heater plate included in the scope of delivery	•
Machine-independent accessories	•
Standards, test certificates and symbols	
VDE	•
CE	•
DVGW gas	•
WEEE	•
VDE-EMC	•
Splash-proof IPX0	•
UKCA	•
Complies with Machinery Directive 2006/42/EC	•