

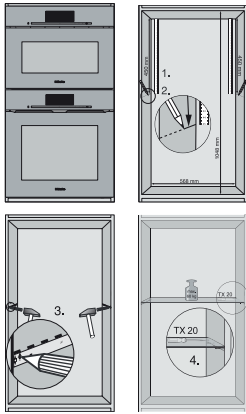
ENB 1060
Base insert
for an optimum gap between Miele built-in appliances.

EAN: 4002515973615 / Material number: 10810730 / Old Material Number: 10995003EU1



- Made of powder-coated metal
- Load capacity up to 60 kg
- Including screws and template

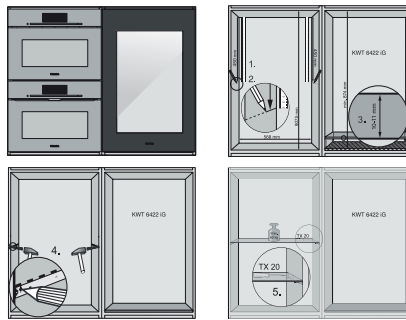
ENB 1060
Base insert
for an optimum gap between Miele built-in appliances.



ENB1060, combination 45er + 60er niche, Installation draw

ENB1060, combination 45er + 60er niche, Installation draw

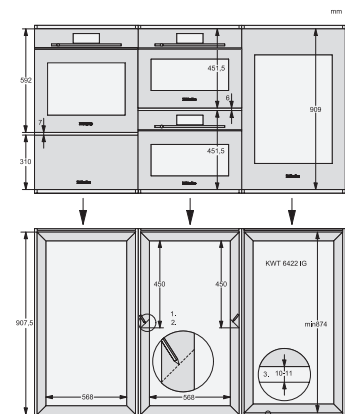
ENB1060, combination 45er + 60er niche, Installation draw



ENB1060, combination 45er + 60er niche, Installation draw

ENB1060, combination 2x45er + KWT6422iG, Installation draw

ENB1060, combination 2x45er + KWT6422iG, Installation draw

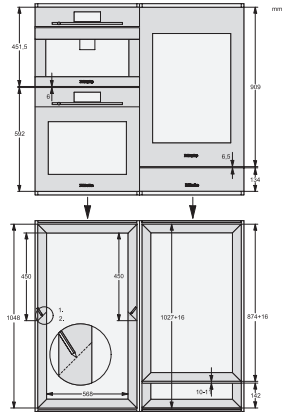


ENB1060, combination 2x45er + KWT6422iG, Installation draw

ENB1060, combination 2x45er + KWT6422iG, Installation draw

ENB1060, combination 60er & 32er ESW + 2x45er + KWT6422iG, Installation draw

ENB 1060
Base insert
for an optimum gap between Miele built-in appliances.



ENB1060, combination 45er & 60er + KWT 6422 iG & 14er
EVS, Installation draw