

KWT 6422 iG

Built-in wine conditioning unit

with FlexiFrame and Push2open for the most demanding wine connoisseurs.



- Flexible storage of larger wine bottles thanks to FlexiFrame
- Perfect design for handleless kitchens – Push2open
- Simultaneous wine storage in separate temperature zones
- Odourless refrigeration section thanks to Active AirClean filters
- Present your wine in the perfect light – LED lighting



EAN: 4002515897997 / Material number: 10737480 / Old Material Number: 36642220EU1

Appliance category	
Wine conditioning unit	•
Construction type	
Built-in appliance	•
Integrated appliance	•
Door hinge	right
Convertible door hinging	•
Side-by-side enabled	•
Design	
Front colour	Obsidian Black glass
Wine compartment lighting	LED illumination
User convenience	
Networking with Miele@home	•
Accessories required	XKS 3130 W
DynaCool	•
SoftClose	•
Concealed door opener	Push2open
Silence system	•
No. of wooden racks	2
Material of wooden racks	Beechwood
Number of FlexiFrame wooden racks	2
3 D bottle presenter	•
Low-vibration storage	•
Controls	
Operating concept	TouchControl
Independent temperature regulation of fridge and freezer zones	No
No. of temperature zones	2
Min. temperature setting range in °C	5
Max. temperature setting range in °C	20
Efficiency and sustainability	
Energy efficiency class (A–G)	G
Annual energy consumption in kWh	151.48
Energy consumption in 24 h in kWh	0.41
Safety	
Lock function	•
Acoustic door alarm	•
Optical door alarm	•
Optical temperature alarm	•
Technical data	
Niche width in mm min.	560
Niche width in mm max.	570
Niche height in mm min.	874
Niche height in mm max.	890
Niche depth in mm	550
Appliance width in mm	595
Appliance height in mm	909
Appliance depth in mm	572
Weight in kg	53.0
Climate class	SN

KWT 6422 iG

Built-in wine conditioning unit

with FlexiFrame and Push2open for the most demanding wine connoisseurs.



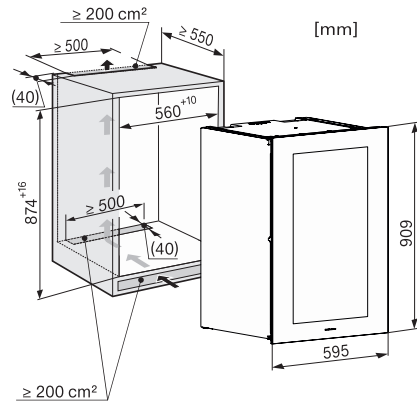
EAN: 4002515897997 / Material number: 10737480 / Old Material Number: 36642220EU1

Refrigerator compartment in l	104
Wine conditioning zone in l	104
Total usable capacity in l	104
0.75 l Bordeaux bottle capacity (no. of bottles)	33 bottles
Storage time in case of fault in h	0
Acoustic airborne noise emission class (A-D)	B
Sound emissions in dB(A) re 1 pW	32
Current consumption (mA)	1000
Voltage in V	220-240
Fuse rating in A	10
Number of phases	1
Frequency in Hz	50
Length of supply lead in m	2.0
Accessories supplied	
Active AirClean filter	•

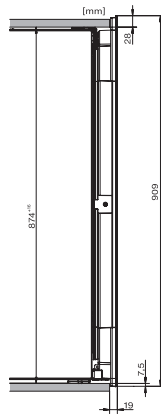
KWT 6422 iG

Built-in wine conditioning unit

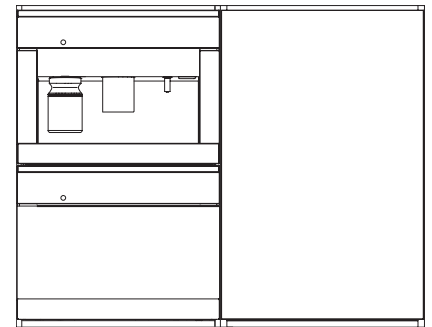
with FlexiFrame and Push2open for the most demanding wine connoisseurs.



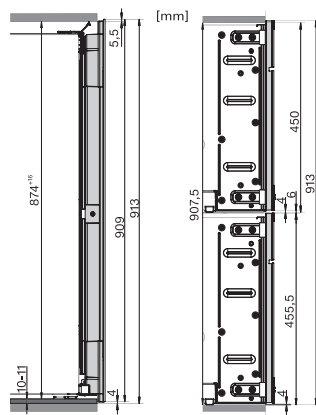
KWT6422iG, KWT6422iG-1, Installation draw



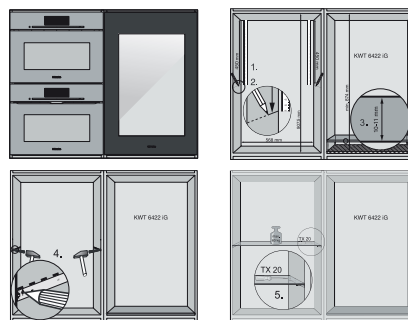
KWT6422iG, KWT6422iG-1, Installation draw, side view



KWT6422iG, KWT6422iG-1, Installation draw



KWT6422iG, KWT6422iG-1, Installation draw, side view

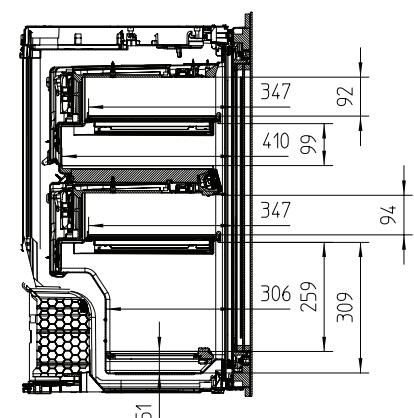


ENB1060, combination 2x45er + KWT6422iG, Installation draw

ENB1060, combination 2x45er + KWT6422iG, Installation draw

ENB1060, combination 2x45er + KWT6422iG, Installation draw

ENB1060, combination 2x45er + KWT6422iG, Installation draw

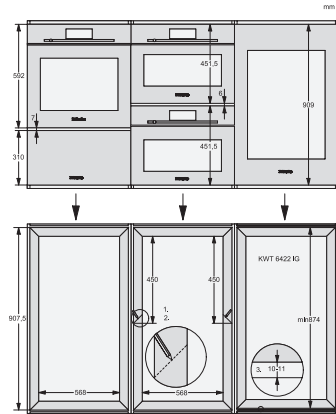


KWT6422iG, KWT6422iG-1, Interior dimensions (Installation drawings)

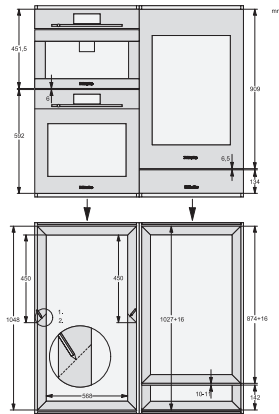
KWT 6422 iG

Built-in wine conditioning unit

with FlexiFrame and Push2open for the most demanding wine connoisseurs.



ENB1060, combination 60er & 32er ESW + 2x45er + KWT6422iG, Installation draw



ENB1060, combination 45er & 60er + KWT 6422 iG & 14er EVS, Installation draw