

E 810

Use

For the optimum loading of saucers or dessert plates.



- Suitable for upper basket O 891
- For 33 saucers or 17 dessert plates

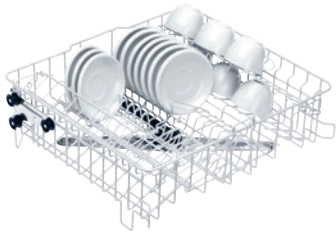
EAN: 4002515276389 / Material number: 09549010 / Old Material Number: 67581001D

Product category	
Fresh-water dishwashers	•
Machine affiliation	
PG 8041	•
PG 8043	•
PG 8045	•
PG 8055	•
PG 8055 U	•
PG 8056	•
PG 8056 U	•
PG 8057 TD	•
PG 8057 TD U	•
PG 8058	•
PG 8058 U	•
PG 8059	•
PG 8059 U	•
PG 8060	•
PG 8061	•
PG 8061 U	•
PG 8096	•
PG 8096 U	•
PG 8099	•
PG 8099 U	•
PFD 400	•
PFD 400 U	•
PFD 401	•
PFD 401 U	•
PFD 402	•
PFD 402 U	•
PFD 404	•
PFD 404 U	•
PFD 405	•
PFD 405 U	•
PFD 407	•
PFD 407 U	•
PFD 408 U	•
Product category	
Insert for saucers	•
Product properties	
Material	Wire, rilsan-coated
Colour	White
Capacity	
Saucers [number]	33
Dessert plates [number]	17
Standard electrical connection	
Number of phases	0
Voltage in V	0
Frequency in Hz	0
Total rated load in kW	0.00
Fuse rating in A	0

E 810

Use

For the optimum loading of saucers or dessert plates.



EAN: 4002515276389 / Material number: 09549010 / Old Material Number: 67581001D

Dimensions and weight	
External dimensions, net height in mm	143
External dimensions, net width in mm	230
External dimensions, net depth in mm	467
External dimensions, gross height in mm	190
External dimensions, gross width in mm	195
External dimensions, gross depth in mm	430
Net weight in kg	0.29
Gross weight in kg	0.49