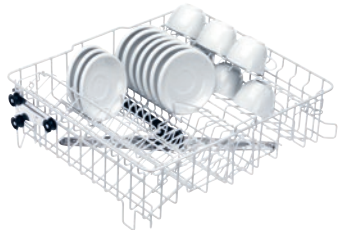


O 891

Upper basket

With insert E 810 for saucers/dessert plates and 2 foldaway cup racks.



- For 33 saucers or 17 dessert plates as well as 20 cups
- Height adjustable in 2 positions by 5 cm
- With integrated spray arm, connection at the back
- Loading height max. 20 cm
- Plate insert E 810 included

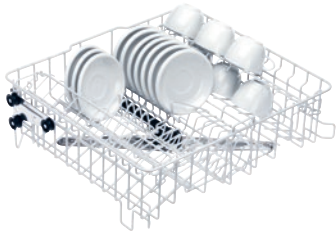
EAN: 4002515276365 / Material number: 09548970 / Old Material Number: 67189101D

Product classification	
Fresh-water dishwashers	•
Machine affiliation	
PG 8041	•
PG 8043	•
PG 8045	•
PG 8055	•
PG 8055 U	•
PG 8056	•
PG 8056 U	•
PG 8057 TD	•
PG 8057 TD U	•
PG 8058	•
PG 8058 U	•
PG 8059	•
PG 8059 U	•
PG 8060	•
PG 8061	•
PG 8061 U	•
PG 8096	•
PG 8096 U	•
PG 8099	•
PG 8099 U	•
PFD 400	•
PFD 400 U	•
PFD 401	•
PFD 401 U	•
PFD 402	•
PFD 402 U	•
PFD 404	•
PFD 404 U	•
PFD 405	•
PFD 405 U	•
PFD 407	•
PFD 407 U	•
PFD 408 U	•
Product category	
Basket for mixed tableware	•
Upper basket	•
Product properties	
Material	Wire, rilsan-coated
Colour	White
Maximum vertical clearance in mm	200
Capacity	
Cups [number]	20
Saucers [number]	33
Dessert plates [number]	17
Standard electrical connection	
Number of phases	0
Voltage in V	0

O 891

Upper basket

With insert E 810 for saucers/dessert plates and 2 foldaway cup racks.



EAN: 4002515276365 / Material number: 09548970 / Old Material Number: 67189101D

Frequency in Hz	0
Total rated load in kW	0.00
Fuse rating in A	0
Dimensions and weight	
External dimensions, net height in mm	190
External dimensions, net width in mm	518
External dimensions, net depth in mm	486
External dimensions, gross height in mm	335
External dimensions, gross width in mm	550
External dimensions, gross depth in mm	545
Net weight in kg	4.50
Gross weight in kg	5.50