

CVA 7440

Built-in coffee machine

In a perfectly combinable design with patented CupSensor for perfect coffee.



- Large clear-text display with sensor controls – DirectSensor
- Perfectly positioned: thanks to the patented CupSensor
- Two coffees at once at the touch of a button – OneTouch for Two
- Always freshly ground – AromaticSystemFresh
- Convenient when hosting lots of guests – coffee/tea pot function

EAN: 4002516825166 / Material number: 12642250 /
Old Material Number: 29744050GBX

| General information | |
|---|---------------|
| Model identifier | CVA 7440 |
| Manufacturer material number | 12642250 |
| EAN number | 4002516825166 |
| Class | Gold |
| Construction type and design | |
| Built-in bean-to-cup coffee machine | • |
| Colour | Pearl beige |
| VitroLine | • |
| ArtLine | • |
| Convenience features | |
| AromaticSystemFresh | • |
| OneTouch preparation | • |
| OneTouch for Two preparation | • |
| DoubleShot | • |
| Programmable User profiles | 10 |
| Conical grinder to preserve the taste | • |
| Selectable grinder setting | • |
| Programmable amount of coffee | • |
| Programmable amount of water | • |
| Programmable water temperature | • |
| Amount of milk can be programmed | • |
| Programmable amount of milk froth | • |
| Pre-brewing programmable | • |
| TeaTimer | • |
| User convenience | |
| Networking with Miele@home | • |
| Display | DirectSensor |
| CupSensor | • |
| PerformanceMode | • |
| EasyClick milk container | • |
| ComfortDoor | • |
| Concealed door handle | • |
| BrilliantLight | • |
| Expert mode | • |
| MultiLingua | • |
| No. of bean types | 1 |
| No. of bean containers | 2 |
| Capacity of bean container A in g | 300 |
| Capacity of bean container B in g | 300 |
| Bean container capacity, total in g | 600 |
| Removable bean container | • |
| Capacity of water container in l | 2,7 |
| Milk container capacity in l | 0,7 |
| Capacity of waste container in capsules | 17 |
| Drip tray capacity | 1,6 |
| Easily accessible containers | • |
| Time of day display | • |

CVA 7440

Built-in coffee machine

In a perfectly combinable design with patented CupSensor for perfect coffee.



EAN: 4002516825166 / Material number: 12642250 /
Old Material Number: 29744050GBX

| | |
|--|--------|
| Clock synchronisation | • |
| Date display | • |
| Programmable switch-on time | • |
| Programmable switch-off time | • |
| Programmable standby time | • |
| Programmable settings | • |
| Drink specialities | |
| Selectable beverage portion size in ml | 20-300 |
| Ristretto, single | • |
| Ristretto, double | • |
| Espresso, single | • |
| Espresso, double | • |
| Coffee, single | • |
| Coffee, double | • |
| Long coffee, single | • |
| Long coffee, double | • |
| Cappuccino, single | • |
| Hot milk, single | • |
| Latte macchiato, double | • |
| Milk froth, single | • |
| Milk froth, double | • |
| Espresso macchiato, single | • |
| Espresso macchiato, double | • |
| Cappuccino italiano, single | • |
| Cappuccino italiano, double | • |
| Flat white, single | • |
| Flat white, double | • |
| Café au lait, single | • |
| Café au lait, double | • |
| Caffè latte, single | • |
| Caffè latte, double | • |
| Caffè americano, single | • |
| Caffè Americano, double | • |
| Long black, single | • |
| Long black, double | • |
| Warm water, single | • |
| Warm water, double | • |
| Hot water, single | • |
| Hot water, double | • |
| Black tea, single | • |
| Black tea, double | • |
| Herbal tea, single | • |
| Herbal tea, double | • |
| Fruit tea, single | • |
| Fruit tea, double | • |
| Green tea, single | • |
| Green tea, double | • |
| White tea, single | • |

CVA 7440

Built-in coffee machine

In a perfectly combinable design with patented CupSensor for perfect coffee.

EAN: 4002516825166 / Material number: 12642250 /

Old Material Number: 29744050GBX

| | |
|--|---------|
| White tea, double | • |
| Japanese tea, single | • |
| Japanese tea, double | • |
| Chai latte, single | • |
| Chai latte, double | • |
| Coffee pot | • |
| Teapot | • |
| Cappuccino, double | • |
| Latte macchiato, double | • |
| Latte macchiato, single | • |
| Efficiency and sustainability | |
| Energy-saving eco-mode selectable | • |
| Power rating in standby mode in W | <=0,3 |
| Power rating in networked standby in W | <=2,0 |
| Time until automatic switch to off mode in min | 20 |
| Time until automatic switch to standby in min | 20 |
| Time until automatic switch to networked standby in min | 20 |
| Power rating in standby mode in W | <=0,3 |
| Power rating in networked standby in W | <=2,0 |
| Time until automatic switch to standby in min | 20 |
| Time until automatic switch to networked standby in min | 20 |
| Cleaning and care | |
| Manual descaling | • |
| Automatic rinsing of milk pipework with water from the water container | • |
| Convenient cleaning programmes | • |
| Automatic rinsing function | • |
| ComfortClean | • |
| Removable milk pipework | • |
| Removable brew unit | • |
| Programmable water hardness | • |
| Safety | |
| System lock | • |
| Technical data | |
| Min niche width in mm | 560 |
| Max niche width in mm | 568 |
| Min niche height in mm | 450 |
| Max niche height in mm | 452 |
| Niche depth in mm | 500 |
| Height-adjustable serving spout in cm | 16,5 |
| Height-adjustable serving spout in cm | 4,0 |
| Appliance width in mm | 595 |
| Appliance height in mm | 455 |
| Appliance depth in mm | 475 |
| Depth with door open in cm | 108,0 |
| Total rated load in kW | 1,45 |
| Voltage in V | 220-240 |
| Fuse rating in A | 13 |
| Number of phases | 1 |

CVA 7440
Built-in coffee machine
In a perfectly combinable design with patented CupSensor for perfect coffee.



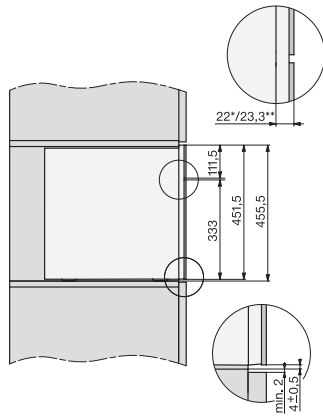
EAN: 4002516825166 / Material number: 12642250 /
Old Material Number: 29744050GBX

| | |
|---|---|
| Length of supply lead in m | 2,0 |
| Accessories included | |
| Milk container made of glass | • |
| Available display languages | |
| Available display languages via MultiLingua | ☐☐☐☐☐☐☐☐, ☐☐, ☐☐☐☐☐, deutsch, dansk, english, english (AU), english (CA), english (GB), english (US), suomi, français, français (CA), français (FR), ελληνικά, italiano, ☐☐☐, ☐☐☐, hrvatski, bahasa malaysia, nederlands, norsk, polski, português, română, русский, svenska, srpski, slovenčina, slovenščina, español, čeština, türkçe, українська, magyar |

CVA 7440

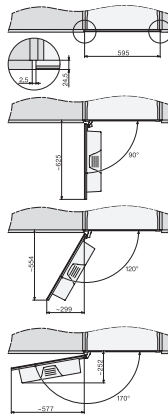
Built-in coffee machine

In a perfectly combinable design with patented CupSensor for perfect coffee.

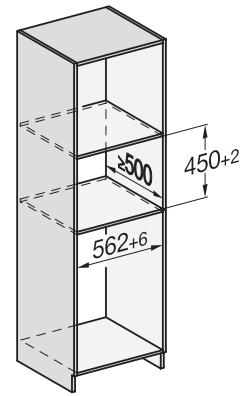


CVA7000, side view (*footnote) (installation drawing)

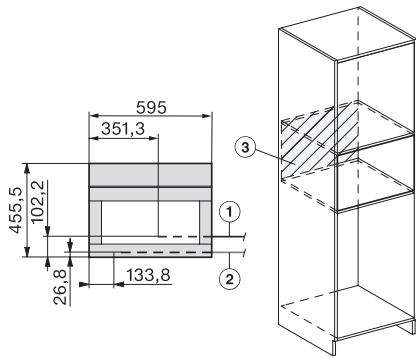
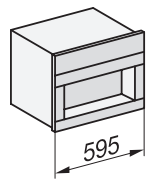
22 mm – Glass, 23,3 mm – Cleansteel



CVA7000, top view (installation drawings)



CVA7000 (installation drawings)



CVA7000, installation (installation drawings)

1) Mains Connection cable, L=2.000 mm, 2) Water inlet hose, L=2.000 mm, 3) No Connection in this area