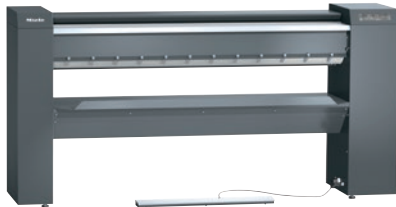


## PRI 217 [EL STW]

Rotary ironer, electrically heated

With the latest controls and steel wool padding.



- Performance 50.0 kg/h\*, roller diameter 250 mm, working width 1660 mm
- Ideal ergonomics – height-adjustable and optional plinth
- State-of-the-art controls – Touch display
- Selection of the most important settings – favourite programmes
- Perfect rotary ironing performance – flexibly positioned heater plate

\* With 25% residual moisture – performance data according to DIN 11 902: The achievable ironing capacity depends on overall conditions such as, for example, the type of laundry and the experience of the operator.

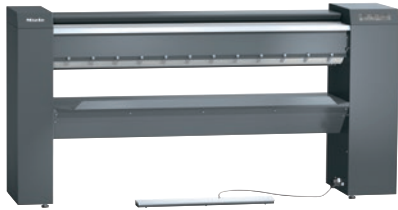
EAN: 4002516423072 / Material number: 11744790 / Old Material Number: 53217014NAM

<b>Construction type and version</b>	
Construction type	Laundry infeed and outfeed at the front
Can be set up against a wall	•
Range	Professional
Outer casing	Iron grey
Roller diameter in mm	250
Working width in mm	1660
Heater plate material	Aluminium
Padding	Supple steel wool, Leaf-spring padding (option)
Ironer cover	ARAMID needle-felt cloth
<b>Application</b>	
Suitable for the hotel and catering industry	•
Suitable for retirement and care homes	•
Suitable for commercial laundries	•
Suitable for hospitals	•
Suitable for offshore use	•
Suitable for marine use	•
<b>Performance data</b>	
Max. ironing performance at 25 % residual moisture in kg/h	50,0
Tested operating hours	20000
<b>Control system</b>	
Control system	Touch display
Touch display (optional)	Touch-Display PRI
Programme setting	Setting of defined programme parameters
Minimum ironing speed, controlled in m/min	1,5
Maximum ironing speed, controlled in m/min	4,5
Adjustable temperature	Infinitely variable
<b>Standard electrical connection</b>	
Heating type	Electric
Electrical connection	3 AC 240V 50-60HZ
Electric heater rating in kW	11,80
Total connected load in kW	12,40
Fuse rating in A	50
<b>Possible voltage variant 1</b>	
Electrical connection	3 AC 220V 50-60HZ
Electric heater rating in kW	9,90
Total connected load in kW	10,50
Fuse rating in A	50
<b>Possible voltage variant 2</b>	
Electrical connection	3 AC 208V 50-60HZ
Electric heater rating in kW	8,90
Total connected load in kW	9,40
Fuse rating in A	50
<b>Dimensions and weight</b>	
External dimensions, height in mm	1110
External dimensions, width in mm	2238
External dimensions, depth in mm	650
External dimensions, gross height in mm	1414

## PRI 217 [EL STW]

Rotary ironer, electrically heated

With the latest controls and steel wool padding.



EAN: 4002516423072 / Material number: 11744790 / Old Material Number: 53217014NAM

External dimensions, gross width in mm	2400
External dimensions, gross depth in mm	860
Net weight in kg	189
Gross weight in kg	214
Maximum floor loading in N	1890
<b>Emissions data</b>	
Emission sound pressure level in the workplace	<70 dB(A) re 20 µPa
Heat dissipation into the room in MJ/h	11,80
<b>Features</b>	
Automatic finger guard	•
FlexControl footswitch	•
Feed-in board	•
Pick-off bands	•
Laundry box	•
Favourite programme	•
Incorrect feed recognition	•
Air suspension	•
Pause function	•
High contact pressure	•
Clean and wax heater plate indicator (op	•
Plinth (optional)	•
Option of ironing when seated	•
APRI 319 care set for the heater plate included in the scope of delivery	•
Machine-independent accessories	•
<b>Connection options</b>	
Payment system (optional)	•
Peak load cut-out/energy management	•
<b>Standards, test certificates and symbols</b>	
Complies with Machinery Directive 2006/42/EC	•