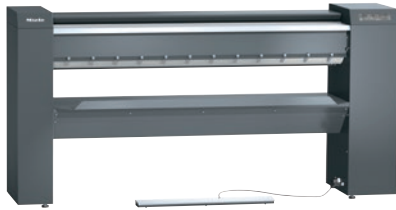


## PRI 217 [EL SOM STW]

Rotary ironer, electrically heated

with the latest controls and steel wool padding for marine applications.



- Performance 64.0 kg/h\*, roller diameter 250 mm, working width 1660 mm
- Ideal ergonomics – height-adjustable and optional plinth
- State-of-the-art controls – Touch display
- Selection of the most important settings – favourite programmes
- Perfect rotary ironing performance – flexibly positioned heater plate

\* With 25 % residual moisture – performance data according to DIN 11902: the achievable ironing performance depends on overall conditions such as, for example, the type of laundry and the experience of the operator.

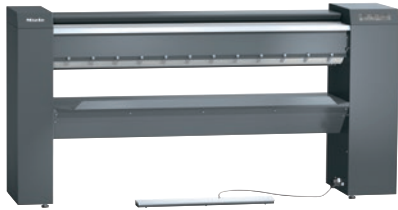
EAN: 4002516423058 / Material number: 11744770 / Old Material Number: 53217012SOM

| <b>Construction type and version</b>                       |   |
|--|---|
| Construction type  | Laundry infeed and outfeed at the front         |
| Can be set up against a wall                               | •   |
| Range  | Professional                                    |
| Outer casing   | Iron grey                                       |
| Roller diameter in mm                                      | 250   |
| Working width in mm  | 1660  |
| Heater plate material                                      | Aluminium                                       |
| Padding  | Supple steel wool, Leaf-spring padding (option) |
| Ironer cover   | ARAMID needle-felt cloth                        |
| <b>Application</b>   |   |
| Suitable for offshore use                                  | •   |
| Suitable for marine use                                    | •   |
| <b>Performance data</b>                                    |   |
| Max. ironing performance at 25 % residual moisture in kg/h | 64,0  |
| Tested operating hours                                     | 20000   |
| <b>Control system</b>                                      |   |
| Control system   | Touch display                                   |
| Touch display (optional)                                   | Touch-Display PRI                               |
| Programme setting  | Setting of defined programme parameters         |
| Minimum ironing speed, controlled in m/min                 | 1,5   |
| Maximum ironing speed, controlled in m/min                 | 4,5   |
| Adjustable temperature                                     | Infinitely variable                             |
| <b>Standard electrical connection</b>                      |   |
| Heating type   | Electric  |
| Electrical connection                                      | 3 AC 440V 50-60HZ                               |
| Electric heater rating in kW                               | 13,30   |
| Total connected load in kW                                 | 13,90   |
| Fuse rating in A   | 25  |
| <b>Dimensions and weight</b>                               |   |
| External dimensions, height in mm                          | 1110  |
| External dimensions, width in mm                           | 2238  |
| External dimensions, depth in mm                           | 650   |
| External dimensions, gross height in mm                    | 1414  |
| External dimensions, gross width in mm                     | 2400  |
| External dimensions, gross depth in mm                     | 860   |
| Net weight in kg   | 189   |
| Gross weight in kg   | 214   |
| Maximum floor load in N/m <sup>2</sup>                     | 1890  |
| <b>Emissions data</b>                                      |   |
| Emission sound pressure level in the workplace             | <70 dB(A) re 20 µPa                             |
| Heat dissipation into the room in MJ/h                     | 11,00   |
| <b>Features</b>  |   |
| Automatic finger guard                                     | •   |
| FlexControl footswitch                                     | •   |
| Feed-in board  | •   |
| Pick-off bands   | •   |
| Laundry box  | •   |

## PRI 217 [EL SOM STW]

Rotary ironer, electrically heated

with the latest controls and steel wool padding for marine applications.



EAN: 4002516423058 / Material number: 11744770 / Old Material Number: 53217012SOM

|  |   |
|--|---|
| Favourite programme  | • |
| Incorrect feed recognition   | • |
| Air suspension   | • |
| Pause function   | • |
| High contact pressure  | • |
| Clean and wax heater plate indicator (op                                 | • |
| Plinth (optional)  | • |
| Option of ironing when seated  | • |
| APRI 319 care set for the heater plate included in the scope of delivery | • |
| Machine-independent accessories  | • |
| <b>Connection options</b>  |   |
| Payment system (optional)  | • |
| Peak load cut-out/energy management                                      | • |
| <b>Standards, test certificates and symbols</b>                          |   |
| VDE  | • |
| CE   | • |
| EAC  | • |
| WEEE   | • |
| VDE-EMC  | • |
| RCM  | • |
| Splash-proof IPX0  | • |
| UKCA   | • |
| Complies with Machinery Directive 2006/42/EC                             | • |