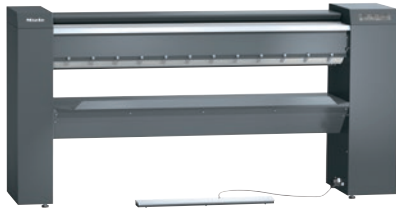


## PRI 217 [EL SOM STW]

Rotary ironer, electrically heated

with the latest controls and steel wool padding for marine applications.



- Performance 60.0 kg/h\*, roller diameter 250 mm, working width 1660 mm
- Ideal ergonomics – height-adjustable and optional plinth
- State-of-the-art controls – Touch display
- Selection of the most important settings – favourite programmes
- Perfect rotary ironing performance – flexibly positioned heater plate

\* With 25 % residual moisture – performance data according to DIN 11902: the achievable ironing performance depends on overall conditions such as, for example, the type of laundry and the experience of the operator.

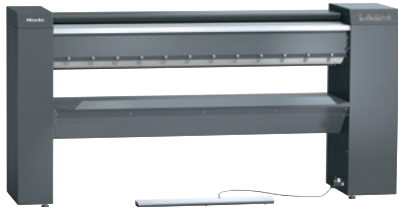
EAN: 4002516423041 / Material number: 11744760 / Old Material Number: 53217011SOM

<b>Construction type and version</b>	
Construction type	Laundry infeed and outfeed at the front
Can be set up against a wall	•
Range	Professional
Outer casing	Iron grey
Roller diameter in mm	250
Working width in mm	1660
Heater plate material	Aluminium
Padding	Supple steel wool, Leaf-spring padding (option)
Ironer cover	ARAMID needle-felt cloth
<b>Application</b>	
Suitable for offshore use	•
Suitable for marine use	•
<b>Performance data</b>	
Max. ironing performance at 25 % residual moisture in kg/h	60,0
Tested operating hours	20000
<b>Control system</b>	
Control system	Touch display
Touch display (optional)	Touch-Display PRI
Programme setting	Setting of defined programme parameters
Minimum ironing speed, controlled in m/min	1,5
Maximum ironing speed, controlled in m/min	4,5
Adjustable temperature	Infinitely variable
<b>Standard electrical connection</b>	
Heating type	Electric
Electrical connection	3 AC 230V 50-60HZ
Electric heater rating in kW	11,00
Total connected load in kW	11,60
Fuse rating in A	50
<b>Dimensions and weight</b>	
External dimensions, height in mm	1110
External dimensions, width in mm	2238
External dimensions, depth in mm	650
External dimensions, gross height in mm	1414
External dimensions, gross width in mm	2400
External dimensions, gross depth in mm	860
Net weight in kg	189
Gross weight in kg	214
Maximum floor load in N/m <sup>2</sup>	1890
<b>Emissions data</b>	
Emission sound pressure level in the workplace	<70 dB(A) re 20 µPa
Heat dissipation into the room in MJ/h	11,00
<b>Features</b>	
Automatic finger guard	•
FlexControl footswitch	•
Feed-in board	•
Pick-off bands	•
Laundry box	•

## PRI 217 [EL SOM STW]

Rotary ironer, electrically heated

with the latest controls and steel wool padding for marine applications.



EAN: 4002516423041 / Material number: 11744760 / Old Material Number: 53217011SOM

Favourite programme	•
Incorrect feed recognition	•
Air suspension	•
Pause function	•
High contact pressure	•
Clean and wax heater plate indicator (op	•
Plinth (optional)	•
Option of ironing when seated	•
APRI 319 care set for the heater plate included in the scope of delivery	•
Machine-independent accessories	•
<b>Connection options</b>	
Payment system (optional)	•
Peak load cut-out/energy management	•
<b>Standards, test certificates and symbols</b>	
VDE	•
CE	•
EAC	•
WEEE	•
VDE-EMC	•
RCM	•
Splash-proof IPX0	•
UKCA	•
Complies with Machinery Directive 2006/42/EC	•