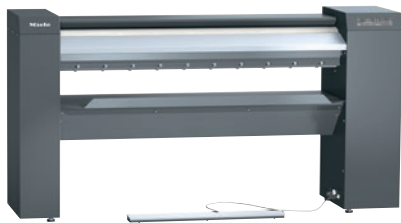


## PRI 214 [EL STW]

Rotary ironer, electrically heated  
with motor, the latest controls and flexible working height.



- Performance 28.0 kg/h\*, roller diameter 210 mm, working width 1400 mm
- Ideal ergonomics – height-adjustable and optional plinth
- State-of-the-art controls – Touch display
- Selection of the most important settings – favourite programmes
- Perfect rotary ironing performance – flexibly positioned heater plate

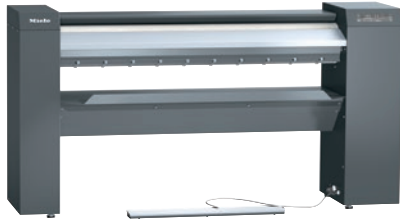
\* With 25% residual moisture – performance data according to DIN 11 902. The achievable ironing capacity depends on overall conditions such as, for example, the type of laundry and the experience of the operator.

EAN: 4002516422938 / Material number: 11744620 / Old Material Number: 53214009NAM

Construction type and version	
Construction type	Laundry infeed and outfeed at the front
Can be set up against a wall	•
Range	Professional
Outer casing	Iron grey
Roller diameter in mm	210
Working width in mm	1400
Heater plate material	Aluminium
Padding	Supple steel wool
Ironer cover	ARAMID needle-felt cloth
Application	
Suitable for the hotel and catering industry	•
Suitable for retirement and care homes	•
Suitable for hospitals	•
Suitable for offshore use	•
Suitable for marine use	•
Performance data	
Max. ironing performance at 25 % residual moisture in kg/h	28,0
Tested operating hours	20000
Control system	
Control system	Touch display
Touch display (optional)	Touch-Display PRI
Programme setting	Setting of defined programme parameters
Minimum ironing speed, controlled in m/min	1,5
Maximum ironing speed, controlled in m/min	4,0
Adjustable temperature	Infinitely variable
Standard electrical connection	
Heating type	Electric
Electrical connection	3 AC 240V 50-60HZ
Electric heater rating in kW	7,10
Total connected load in kW	7,60
Fuse rating in A	30
Possible voltage variant 1	
Electrical connection	3 AC 220V 50-60HZ
Electric heater rating in kW	6,00
Total connected load in kW	6,50
Fuse rating in A	30
Possible voltage variant 2	
Electrical connection	3 AC 208V 50-60HZ
Electric heater rating in kW	5,30
Total connected load in kW	5,90
Fuse rating in A	30
Dimensions and weight	
External dimensions, height in mm	1032
External dimensions, width in mm	1979
External dimensions, depth in mm	650
External dimensions, gross height in mm	1374
External dimensions, gross width in mm	2163

## PRI 214 [EL STW]

Rotary ironer, electrically heated  
with motor, the latest controls and flexible working height.



EAN: 4002516422938 / Material number: 11744620 / Old Material Number: 53214009NAM

External dimensions, gross depth in mm	660
Net weight in kg	140
Gross weight in kg	155
Maximum floor loading in N	1400
<b>Emissions data</b>	
Emission sound pressure level in the workplace	<70 dB(A) re 20 µPa
Heat dissipation into the room in MJ/h	7,10
<b>Features</b>	
Automatic finger guard	•
FlexControl footswitch	•
Feed-in board	•
Pick-off bands	•
Laundry box	•
Laundry return feed	•
Favourite programme	•
Incorrect feed recognition	•
Air suspension	•
Pause function	•
High contact pressure	•
Clean and wax heater plate indicator (op	•
Plinth (optional)	•
Option of ironing when seated	•
APRI 319 care set for the heater plate included in the scope of delivery	•
Machine-independent accessories	•
<b>Connection options</b>	
Payment system (optional)	•
Peak load cut-out/energy management	•
<b>Standards, test certificates and symbols</b>	
Complies with Machinery Directive 2006/42/EC	•