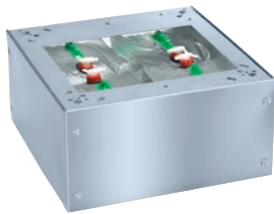


APCL 022

Box plinth, 30 cm high, without floor bolts

for ergonomic loading and unloading of the washing machine and tumble dryer.



- No need to anchor the plinth to the floor
- Safe and stable operation

EAN: 4002516305699 / Material number: 11476830 / Old Material Number: 59590017D

| Product classification | |
|---|---|
| Washing machines | • |
| Tumble dryers | • |
| Machine/accessory category | |
| PWM 500-08 | • |
| PWM 500-09 | • |
| PWM 506 Mop Star 60 | • |
| PWM 507 | • |
| PWM 508 Mop Star 80 | • |
| PWM 900-09 | • |
| PWM 906 | • |
| PWM 907 | • |
| PWM 908 | • |
| PDR 500-08 | • |
| PDR 507 | • |
| PDR 900-08 | • |
| PDR 908 | • |
| Product category | |
| Plinth/base | • |
| Product properties | |
| Electrical connection | OHNE |
| Material | Stainless steel, Powder coated galvanised steel |
| Colour | Stainless Steel |
| Dimensions and weight | |
| External dimensions, net height in mm | 305 |
| External dimensions, net width in mm | 605 |
| External dimensions, net depth in mm | 625 |
| External dimensions, gross height in mm | 319 |
| External dimensions, gross width in mm | 630 |
| External dimensions, gross depth in mm | 640 |
| Net weight [kg] | 24,00 |
| Gross weight in kg | 26,00 |