

DA 3698

Slimline cooker hood

with motorised pull-out canopy for maximum convenience.



- Filigree design – extremely slim canopy with a width of 892 mm
- Unique user convenience – Con@ctivity
- Energy-efficient and uniform illumination – 3 LED spotlights
- Powerful – 635 m³/h in Booster level
- Energy-efficient and quiet – powerful ECO motor

EAN: 4002515935439 / Material number: 10751200 / Old Material Number: 28369855D

Construction type and design	
Appliance colour	Stainless steel
Construction type	
Slimline cooker hood	•
Operating modes	
Type of air guide	Can be retrofitted
Recirculation conversion kit (order separately)	DUU 151
Active charcoal filter (order separately)	DKF 19-P
User convenience	
Miele@home	•
Automatic function Con@ctivity	•
Electronic controls	•
Miele@mobile app	•
Power levels (number without Booster level)	3
Booster levels	1
Programmable Booster level switch-off	•
Run-on time 5/15 min.	•
Grease filter saturation indicator	•
Active charcoal filter saturation indicator	•
Motor-operated cooker hoods	•
Efficiency and sustainability	
Annual energy consumption in kWh/year	25,6
Energy efficiency class (A+++ – D)	A++
ECO motor	•
Grease filtering efficiency class	C
PowerManagement system	•
Fluid dynamic efficiency class	A
Lighting efficiency class	A
Cleaning and care	
Easy-to-clean canopy interior – CleanCover	•
Filter system	
Number of dishwasher-safe stainless steel grease filters (10-ply)	2
Lighting	
LED	•
Number x W	3 x 3 W
Light intensity in lx	500 lx
Colour temperature in K	3500 Kelvin
Dimmer function	•
Fan	
Dual-action fan	•
DC motor	•
Exhaust air	
Air throughput in Level 1 (m ³ /h) according to EN 61591	190
Air throughput in Level 2 (m ³ /h) according to EN 61591	290
Air throughput in Level 3 (m ³ /h) according to EN 61591	400
Air throughput in booster level 1 (m ³ /h)	635

DA 3698
Slimline cooker hood
with motorised pull-out canopy for maximum convenience.



EAN: 4002515935439 / Material number: 10751200 / Old Material Number: 28369855D

Sound power in Level 1 (dB(A) re 1 pW) according to EN 60704-3	36,0
Sound power in Level 2 (dB(A) re 1 pW) according to EN 60704-3	44,0
Sound power in Level 3 (dB(A) re 1 pW) according to EN 60704-3	51,0
Sound power in Booster level 1 (dB(A) re 1 pW) acc. to EN 60704-3	63,0
Sound pressure in Level 1 (dB(A) re 20 µPa) according to EN 60704-2-13	22,0
Sound pressure in Level 2 (dB(A) re 20 µPa) according to EN 60704-2-13	30,0
Sound pressure in Level 3 (dB(A) re 20 µPa) according to EN 60704-2-13	37,0
Sound pressure in Booster level 1 (dB(A) re 20 µPa) acc. to EN 60704-2-13	49,0
Recirculation	
Air throughput in Level 1 (m ³ /h) according to EN 61591	140
Air throughput in Level 2 (m ³ /h) according to EN 61591	225
Air throughput in Intensive level (m ³ /h) according to EN 61591	530
Air throughput in Level 3 (m ³ /h) according to EN 61591	365
Sound power in Level 1 (dB(A) re 1 pW) according to EN 60704-3	46,0
Noise power level in Intensive level (dB(A) re 1 pW) according to EN 60704-3	73,0
Sound power in Level 2 (dB(A) re 1 pW) according to EN 60704-3	55,0
Sound power in Level 3 (dB(A) re 1 pW) according to EN 60704-3	65,0
Sound pressure in Level 1 (dB(A) re 20 µPa) according to EN 60704-2-13	32,0
Sound pressure in Level 2 (dB(A) re 20 µPa) according to EN 60704-2-13	41,0
Sound pressure in Level 3 (dB(A) re 20 µPa) according to EN 60704-2-13	51,0
Noise pressure level in Intensive level (dB(A) re 20 µPa) according to EN 60704-2-13	59,0
Safety	
Safety switch-off	•
Technical data	
Canopy width in mm	892
Canopy height in mm	37
Canopy depth in mm	309
Net weight in kg	19,0
Length of supply lead in m	1,5
Standard plug fitted	•
Minimum height above electric hobs in mm	450
Minimum safety distance above gas hobs (max. 12.6 kW total power, burner ≤ 4.5 kW) in mm	650
Number of phases	1
Total rated load in kW	0,08

DA 3698
Slimline cooker hood
with motorised pull-out canopy for maximum convenience.



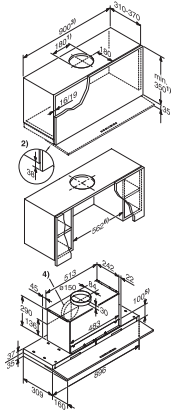
EAN: 4002515935439 / Material number: 10751200 / Old Material Number: 28369855D

Voltage in V	230
Fuse rating in A	10
Frequency in Hz	50
Installation notes	
Extraction ducting connection at top	•
Extraction connection at top and rear	•
Diameter of exhaust duct in mm	150

DA 3698

Slimline cooker hood

with motorised pull-out canopy for maximum convenience.



DA 3698 (Installation drawing)

1. Vented, recirculation with DUU 150., 2. Housing unit carcass is 38 mm shorter than the door. This also applies to adjacent cabinets when the appliance is installed in a 600 mm wide housing unit., 3. Installation is also possible in a 60 cm wide housing unit. In this case, the door of the housing unit must open upwards (top-hinged) to enable access to grease filters. This also applies to adjacent cabinets., 4. Vent connection alternatively to the rear., 5. After the wall unit has been installed, a partition can be fitted. The slots for grease filters and odour-absorbing filters for use in recirculation mode must be accessible., 6. Alternatively, side sections can be added to the wall unit., In regard to dimensions for wall unit height and cut-outs, fitted accessories should be taken into account (e.g. silencers, XKM module).