

DA 3466

Slimline cooker hood

with energy-efficient LED lighting and light-touch switches for easy use.



- Elegant design – slim 595 mm extractor canopy
- Powerful – 550 m³/h in Booster level
- Efficient filtration- 10-ply stainless-steel grease filter
- Safe and easy to clean – Miele CleanCover
- Suitable for every home – for extraction or recirculation

EAN: 4002515562222 / Material number: 10081910 / Old Material Number: 28346655GB

Construction type	
Slimline cooker hood	•
Operating modes	
Type of air guide	Can be retrofitted
Recirculation conversion kit (order separately)	DUU 151
Active charcoal filter (order separately)	DKF 13-P
Design	
Colour	Stainless steel
User convenience	
Electronic controls	•
Power levels (number without Booster level)	3
Programmable Booster level switch-off	•
Easy-to-clean canopy interior – CleanCover	•
Efficiency and sustainability	
Annual energy consumption in kWh/year	69,5
Energy efficiency class (A+++ – D)	B
Annual energy consumption in kWh/year	69,5
Fluid dynamic efficiency class	C
Lighting efficiency class	A
Grease filtering efficiency class	B
Filter system	
Number of dishwasher-safe stainless steel grease filters (10-ply)	1
Lighting	
LED	•
Number x W	2 x 3 W
Light intensity in lx	320 lx
Colour temperature in K	3000 Kelvin
Fan	
Dual-action fan	•
AC motor	•
Exhaust air	
Air throughput in Level 1 (m ³ /h) according to EN 61591	150
Air throughput in Level 2 (m ³ /h) according to EN 61591	275
Air throughput in Level 3 (m ³ /h) according to EN 61591	400
Air throughput in Booster level (m ³ /h) according to EN 61591	550
Sound power in Level 1 (dB(A) re 1 pW) according to EN 60704-3	45,0
Sound power in Level 2 (dB(A) re 1 pW) according to EN 60704-3	51,0
Sound power in Level 3 (dB(A) re 1 pW) according to EN 60704-3	56,0
Sound power in Booster level (dB(A) re 1 pW) acc. to EN 60704-3	64,0
Sound pressure in Level 1 (dB(A) re 20 µPa) according to EN 60704-2-13	32,0
Sound pressure in Level 2 (dB(A) re 20 µPa) according to EN 60704-2-13	39,0
Sound pressure in Level 3 (dB(A) re 20 µPa) according to EN 60704-2-13	44,0

DA 3466

Slimline cooker hood

with energy-efficient LED lighting and light-touch switches for easy use.



EAN: 4002515562222 / Material number: 10081910 / Old Material Number: 28346655GB

Sound pressure in Booster level (dB(A) re 20 µPa) acc. to EN 60704-2-13 52,0

Recirculation

Air throughput in Level 1 (m³/h) according to EN 61591 80

Air throughput in Level 2 (m³/h) according to EN 61591 180

Air throughput in Level 3 (m³/h) according to EN 61591 280

Air throughput in Booster level 1 (m³/h) according to EN 61591 350

Sound power in Level 1 (dB(A) re 1 pW) according to EN 60704-3 53,0

Sound power in Level 2 (dB(A) re 1 pW) according to EN 60704-3 61,0

Sound power in Level 3 (dB(A) re 1 pW) according to EN 60704-3 67,0

Sound power in Booster level 1 (dB(A) re 1 pW) acc. to EN 60704-3 72,0

Sound pressure in Level 1 (dB(A) re 20 µPa) according to EN 60704-2-13 40,0

Sound pressure in Level 2 (dB(A) re 20 µPa) according to EN 60704-2-13 48,0

Sound pressure in Level 3 (dB(A) re 20 µPa) according to EN 60704-2-13 54,0

Sound pressure in Booster level 1 (dB(A) re 20 µPa) acc. to EN 60704-2-13 60,0

Safety

Safety switch-off •

Technical data

Canopy width in mm 595

Canopy height in mm 34

Canopy depth in mm 275

Minimum height above electric hobs in mm 450

Net weight in kg 12,0

Length of supply lead in m 1,5

Standard plug fitted •

Minimum safety distance above gas hobs (max. 12.6 kW total power, burner ≤ 4.5 kW) in mm 650

Total rated load in kW 0,18

Voltage in V 230

Fuse rating in A 10

Number of phases 1

Frequency in Hz 50

Installation notes

Extraction ducting connection at top •

Diameter of exhaust duct in mm 150

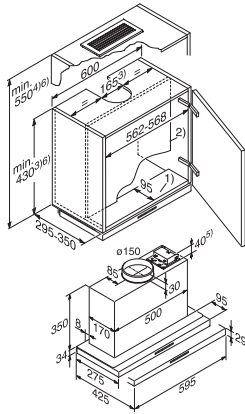
Optional accessories

Active charcoal filter Nein

DA 3466

Slimline cooker hood

with energy-efficient LED lighting and light-touch switches for easy use.



DA 3460, DA 3466 (installation drawing)

1) Der Oberschrank muss im vorderen Bereich bis zur Zwischenwand über einen Unterboden verfügen. Wird das Gerät weiter hinten montiert, z.B. bei Montage einer Frontblende,, muss auch der Unterboden entsprechend tiefer sein., , 2) Die Zwischenwand des Oberschranks muss herausnehmbar sein., , 3) Abluft; bei Maßen für Schrankhöhe und Ausschnitte ist montiertes Zubehör zu berücksichtigen (z.B. Schalldämpfer, DSM-Modul), , 4) Umluft mit Umbausatz DUU 151, , 5) Zubehör DSM 400, , 6) Bei Montage mit Absenkrahmen DAR 3000: Abweichende Schrankhöhe beachten (siehe Maßskizze DAR 3000)