

DA 3496

Slimline cooker hood

with energy-efficient LED lighting and light-touch switches for easy use.



- Elegant design – slim 895 mm extractor canopy
- Powerful – 550 m<sup>3</sup>/h in Booster level
- Efficient filtration- 10-ply stainless-steel grease filter
- Safe and easy to clean – Miele CleanCover
- Suitable for every home – for extraction or recirculation

EAN: 4002515520079 / Material number: 09884090 /  
Old Material Number: 28349655D

<b>Construction type and design</b>	
Appliance colour	Stainless steel
<b>Construction type</b>	
Slimline cooker hood	•
<b>Operating modes</b>	
Type of air guide	Can be retrofitted
Recirculation conversion kit (order separately)	DUU 151
Active charcoal filter (order separately)	DKF 13-P
<b>User convenience</b>	
Electronic controls	•
Power levels (number without Booster level)	3
Booster levels	1
Programmable Booster level switch-off	•
<b>Efficiency and sustainability</b>	
Annual energy consumption in kWh/year	69,5
Energy efficiency class (A+++ – D)	B
Grease filtering efficiency class	B
Fluid dynamic efficiency class	C
Lighting efficiency class	A
<b>Cleaning and care</b>	
Easy-to-clean canopy interior – CleanCover	•
<b>Filter system</b>	
Number of dishwasher-safe stainless steel grease filters (10-ply)	2
<b>Lighting</b>	
LED	•
Number x W	2 x 3 W
Light intensity in lx	300 lx
Colour temperature in K	3000 Kelvin
<b>Fan</b>	
Dual-action fan	•
AC motor	•
<b>Exhaust air</b>	
Air throughput in Level 1 (m <sup>3</sup> /h) according to EN 61591	150
Air throughput in Level 2 (m <sup>3</sup> /h) according to EN 61591	275
Air throughput in Level 3 (m <sup>3</sup> /h) according to EN 61591	400
Air throughput in booster level 1 (m <sup>3</sup> /h)	550
Sound power in Level 1 (dB(A) re 1 pW) according to EN 60704-3	45,0
Sound power in Level 2 (dB(A) re 1 pW) according to EN 60704-3	51,0
Sound power in Level 3 (dB(A) re 1 pW) according to EN 60704-3	56,0
Sound power in Booster level 1 (dB(A) re 1 pW) acc. to EN 60704-3	64,0
Sound pressure in Level 1 (dB(A) re 20 µPa) according to EN 60704-2-13	32,0
Sound pressure in Level 2 (dB(A) re 20 µPa) according to EN 60704-2-13	39,0

DA 3496

Slimline cooker hood

with energy-efficient LED lighting and light-touch switches for easy use.



EAN: 4002515520079 / Material number: 09884090 /  
Old Material Number: 28349655D

Sound pressure in Level 3 (dB(A) re 20 µPa) according to EN 60704-2-13 44,0

Sound pressure in Booster level 1 (dB(A) re 20 µPa) acc. to EN 60704-2-13 52,0

#### Recirculation

Air throughput in Level 1 (m<sup>3</sup>/h) according to EN 61591 80

Air throughput in Level 2 (m<sup>3</sup>/h) according to EN 61591 180

Air throughput in Level 3 (m<sup>3</sup>/h) according to EN 61591 280

Air throughput in Booster level 1 (m<sup>3</sup>/h) according to EN 61591 350

Sound power in Level 1 (dB(A) re 1 pW) according to EN 60704-3 53,0

Sound power in Level 2 (dB(A) re 1 pW) according to EN 60704-3 61,0

Sound power in Level 3 (dB(A) re 1 pW) according to EN 60704-3 67,0

Sound power in Booster level 1 (dB(A) re 1 pW) acc. to EN 60704-3 72,0

Sound pressure in Level 1 (dB(A) re 20 µPa) according to EN 60704-2-13 40,0

Sound pressure in Level 2 (dB(A) re 20 µPa) according to EN 60704-2-13 48,0

Sound pressure in Level 3 (dB(A) re 20 µPa) according to EN 60704-2-13 54,0

Sound pressure in Booster level 1 (dB(A) re 20 µPa) acc. to EN 60704-2-13 60,0

#### Safety

Safety switch-off •

#### Technical data

Canopy width in mm 895

Canopy height in mm 34

Canopy depth in mm 275

Net weight in kg 14,0

Length of supply lead in m 1,5

Standard plug fitted •

Minimum height above electric hobs in mm 450

Minimum safety distance above gas hobs (max. 12.6 kW total power, burner ≤ 4.5 kW) in mm 650

Number of phases 1

Total rated load in kW 0,18

Voltage in V 230

Fuse rating in A 10

Frequency in Hz 50

#### Installation notes

Extraction ducting connection at top •

Diameter of exhaust duct in mm 150

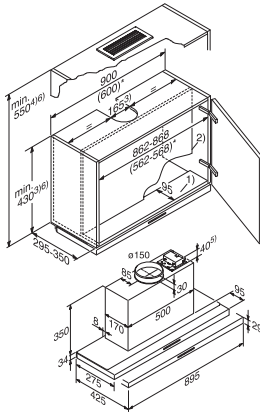
#### Accessories included

Adapter to reduce ducting diameter from 150 mm to 125 mm Ø •

DA 3496

Slimline cooker hood

with energy-efficient LED lighting and light-touch switches for easy use.



DA 3490, DA 3496 (installation drawing)

1. A shelf must be fitted in the front of the wall unit to the depth of the partition wall. If the cooker hood is fitted further back, e.g. to accommodate a front panel, the shelf will need to be deeper. 2. The partition wall in the wall unit must be removable. 3. Extraction mode: when measuring for height of the wall unit and the cut-out, account must be taken of any accessories fitted, e.g. silencer, DSM module. 4. Recirculation mode: with conversion kit DUU 151. 5. Optional accessory: DSM 400. 6. Installation with kneeling frame DAR 3000: Please attend differing cabinet height (see installation drawing DAR 3000). \* Can also be installed in a 600 mm wide unit (not possible with frame DAR 3000).