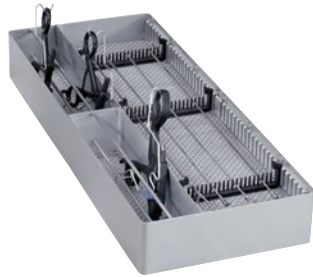


E 457

Insert

for the optimum loading of separable MIS instruments.



- Suitable for 12 handles and work inserts, for example
- Bottom in 3 mm wire mesh, sides closed
- Welded bracket for 8-12 handles, distribution variable
- equipped with 3 bars for storage and locking

EAN: 4002512067331 / Material number: 04618030 / Old Material Number: 69545702D

<b>Product classification</b>	
Washer-disinfectors, medical	•
Large-capacity washer-disinfectors, medical	•
<b>Machine affiliation</b>	
G 7823	•
G 7824	•
G 7825	•
G 7826	•
PG 8527	•
PG 8528	•
PG 8535	•
PG 8536	•
PG 8562	•
PG 8582	•
PG 8582 CD	•
PG 8592	•
<b>Product category</b>	
Insert/module for MIS instruments	•
<b>Product properties</b>	
Material	Stainless steel, Plastic
Colour	Stainless Steel, Black
<b>Area of application</b>	
Reprocessing of MIS instruments	•
<b>Standard electrical connection</b>	
Number of phases	0
Voltage in V	0
Frequency in Hz	0
Total rated load in kW	0,00
Fuse rating in A	0
<b>Dimensions and weight</b>	
External dimensions, net height in mm	192
External dimensions, net width in mm	490
External dimensions, net depth in mm	62
External dimensions, gross height in mm	120
External dimensions, gross width in mm	320
External dimensions, gross depth in mm	540
Net weight in kg	1,75
Gross weight in kg	2,02