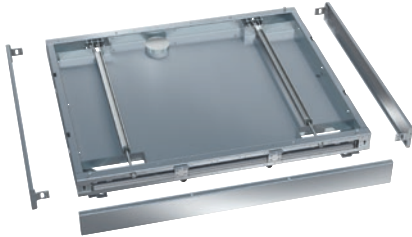


RP 1150

Plinth, on wheels

For 1,150 mm-wide appliances, incl. drip tray without openings for floor drain.



- Suitable for single-door machines, 1,150 mm wide
- Castors for pulling the machine forward for servicing
- Only suitable for appliances with a drain pump
- Easy access for servicing

EAN: 4002516854890 / Material number: 12680180 / Old Material Number: 69253011D

Product category	
Large-capacity washer-disinfectors, laboratory	•
Machine affiliation	
PLW 8617	•
Product category	
Plinth / base	•
Product characteristics	
Material	Stainless steel
Colour	Stainless Steel
Dimensions and weight	
External dimensions, net height in in. (mm)	3 15/16 (100)
External dimensions, net width in in. (mm)	39 (990)
External dimensions, net depth in in. (mm)	45 5/16 (1150)
External dimensions, gross height in in. (mm)	6 5/16 (160)
External dimensions, gross width in in. (mm)	40 3/4 (1035)
External dimensions, gross depth in in. (mm)	46 11/16 (1185)
Net weight in lb (kg)	74 (33.70)
Gross weight in lb (kg)	79 (36.00)