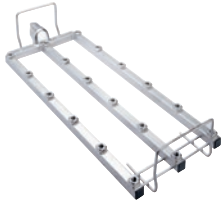


A 301/4

Injector module

For optimum loading of laboratory glassware – can be equipped with 18 nozzles.

EAN: 4002516854739 / Material number: 12668790 / Old Material Number: 69630106D



- Suitable for lab. glassware such as Erlenmeyer and round flasks.
- Module w/o injector nozzles – equipped based on individual needs
- For up to 18 injector nozzles
- Part of SimpleLoad system
- Nozzle spacing 78 mm across the width, 78 mm across the depth
- Particularly suitable for A 842 and A 843 (nozzle diameter 4 mm)

<b>Product category</b>	
Glassware Washers, laboratory	•
SlimLine laboratory glassware washers	•
Machines for cleaning industrial parts	•
SlimLine laboratory glasswashers for cleaning industrial parts	•
<b>Machine affiliation</b>	
PLW 8636 [IPC]	•
PLW 8636 [LAB / LAB MON]	•
PG 8504	•
PG 8583	•
PG 8583 CD	•
PG 8593	•
PLW 8604	•
PLW 8683	•
PLW 8683 CD	•
PLW 8693	•
PLW 7111	•
PLW 7111 [IPC]	•
<b>Product category</b>	
Insert / module for narrow necked glassware	•
Insert for various bottles	•
<b>Application area</b>	
Reprocessing of laboratory glassware	•
<b>Product characteristics</b>	
Material	Stainless steel, Plastic
Colour	Stainless Steel, Black
Part of SimpleLoad system	•
<b>Capacity</b>	
Narrow necked glassware [number]	18
<b>Dimensions and weight</b>	
External dimensions, net height in in. (mm)	2 7/8 (72)
External dimensions, net width in in. (mm)	6 13/16 (173)
External dimensions, net depth in in. (mm)	18 7/8 (479)
External dimensions, gross height in in. (mm)	3 15/16 (100)
External dimensions, gross width in in. (mm)	8 1/8 (205)
External dimensions, gross depth in in. (mm)	19 3/16 (487)
Net weight in lb (kg)	2 (0.90)
Gross weight in lb (kg)	4 (1.89)