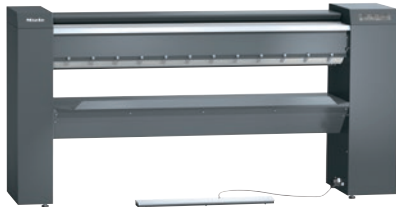


PRI 217 [EL STW]

Rotary iron, electric

With the latest controls and steel wool padding.



- Performance 110.2 (50.0) lb/h (kg/h)*, roller diameter 9 7/8 (250) in (mm), working width 65 3/8 (1660) in (mm)
- Ideal ergonomics – height-adjustable and optional base
- State-of-the-art controls – Touch display
- Selection of the most important settings – favourite programs
- Perfect rotary ironing performance – flexibly positioned heater plate

* With 25% residual moisture – performance data according to DIN 11 902: The achievable laundry throughput depends on overall conditions such as, for example, the type of laundry and the experience of the operator.

EAN: 4002516423072 / Material number: 11744790 /
Old Material Number: 53217014NAM

Construction type and design	
Construction type	In-feed and out-feed of laundry at the front
Installation against a wall possible	•
Product line	Professional
Outer casing	Iron grey
Roller diameter in in. (mm)	9 7/8 (250)
Working width in in. (mm)	65 3/8 (1660)
Heater plate material	Aluminium
Iron padding	Supple steel wool, Leaf-spring padding (option)
Roller cover	ARAMID needle-felt cloth
Application	
Suitable for hotels and restaurants	•
Suitable for retirement and care homes	•
Suitable for commercial laundromats	•
Suitable for hospitals	•
Suitable for offshore use	•
Suitable for Marine use	•
Performance data	
Max. ironing performance at 25% residual moisture in kg/h	110.2 (50.0)
Tested operating hours	20000
Controls	
Control type	Touch display
Touch display (optional)	Touch-Display PRI
Program setting	Setting of defined program parameters
Minimum iron speed, controlled in m/min	1.5
Maximum iron speed, controlled in m/min	4.5
Adjustable temperature	Infinitely variable
Standard electrical connection	
Heating type	Electric
Electrical connection	3 AC 240V 50-60HZ
Electric heater rating in kW	11.80
Total rated load in kW	12.40
Fuse rating in A	50
Possible voltage variant 1	
Electrical connection	3 AC 220V 50-60HZ
Electric heater rating in kW	9.90
Total rated load in kW	10.50
Fuse rating in A	50
Possible voltage variant 2	
Electrical connection	3 AC 208V 50-60HZ
Electric heater rating in kW	8.90
Total rated load in kW	9.40
Fuse rating in A	50
Dimensions and weight	
External dimensions, height in in. (mm)	43 3/4 (1110)

PRI 217 [EL STW]

Rotary iron, electric

With the latest controls and steel wool padding.



EAN: 4002516423072 / Material number: 11744790 /

Old Material Number: 53217014NAM

External dimensions, width in in. (mm)	88 1/8 (2238)
External dimensions, depth in in. (mm)	25 5/8 (650)
External dimensions, gross height in in. (mm)	55 11/16 (1414)
External dimensions, gross width in in. (mm)	94 1/2 (2400)
External dimensions, gross depth in in. (mm)	33 7/8 (860)
Net weight in lbs. (kg)	417 (189)
Gross weight in lbs. (kg)	472 (214)
Maximum floor load in N	1890

Emission values

Emission sound pressure level in the workplace	<70 dB(A) re 20 µPa
Heat dissipation into the room in MJ/h	11.80

Features

Automatic finger guard / finger guard	•
FlexControl footswitch	•
Feed board	•
Laundry picker	•
Laundry box	•
Favourites program	•
Incorrect feed recognition	•
Air suspension	•
Pause function	•
High contact pressure	•
Heater plate cleaning and waxing indicator	•
Base (optional)	•
Option of ironing when seated	•
APRI 319 care set for the heater plate included in the scope of delivery	•
Machine-independent accessories	•

Efficiency and sustainability

Recycling rate in %	98
---------------------	----

Connection options

Payment system (optional)	•
Peak-load negotiation / energy management	•

Standards / certs / symbols

Complies with Machinery Directive 2006/42/EC	•
--	---