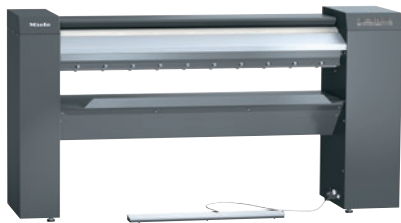


PRI 214 [EL STW]

Rotary iron, electric

with fan, the latest controls and flexible working height.



- Performance 28.0 kg/h*, roller diameter 8 5/16 (210) in (mm), working width 55 1/8 (1400) in (mm)
- Ideal ergonomics – height-adjustable and optional base
- State-of-the-art controls – Touch display
- Selection of the most important settings – favourite programs
- Perfect rotary ironing performance – flexibly positioned heater plate

* With 25% residual moisture – performance data according to DIN 11 902: The achievable laundry throughput depends on overall conditions such as, for example, the type of laundry and the experience of the operator.

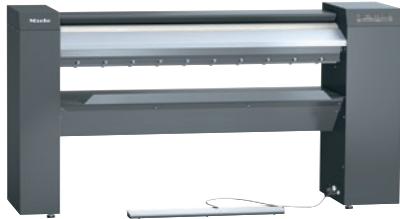
EAN: 4002516422938 / Material number: 11744620 / Old Material Number: 53214009NAM

Construction type and design	
Construction type	In-feed and out-feed of laundry at the front
Installation against a wall possible	•
Product line	Professional
Outer casing	Iron grey
Roller diameter in in. (mm)	8 5/16 (210)
Working width in in. (mm)	55 1/8 (1400)
Heater plate material	Aluminium
Iron padding	Supple steel wool
Roller cover	ARAMID needle-felt cloth
Application	
Suitable for hotels and restaurants	•
Suitable for retirement and care homes	•
Suitable for hospitals	•
Suitable for offshore use	•
Suitable for Marine use	•
Performance data	
Max. ironing performance at 25% residual moisture in kg/h	28.0
Tested operating hours	20000
Controls	
Control type	Touch display
Touch display (optional)	Touch-Display PRI
Program setting	Setting of defined program parameters
Minimum iron speed, controlled in m/min	1.5
Maximum iron speed, controlled in m/min	4.0
Adjustable temperature	Infinitely variable
Standard electrical connection	
Heating type	Electric
Electrical connection	3 AC 240V 50-60HZ
Electric heater rating in kW	7.10
Total rated load in kW	7.60
Fuse rating in A	30
Possible voltage variant 1	
Electrical connection	3 AC 220V 50-60HZ
Electric heater rating in kW	6.00
Total rated load in kW	6.50
Fuse rating in A	30
Possible voltage variant 2	
Electrical connection	3 AC 208V 50-60HZ
Electric heater rating in kW	5.30
Total rated load in kW	5.90
Fuse rating in A	30
Dimensions and weight	
External dimensions, height in in. (mm)	40 11/16 (1032)
External dimensions, width in in. (mm)	77 15/16 (1979)
External dimensions, depth in in. (mm)	25 5/8 (650)
External dimensions, gross height in in. (mm)	54 1/8 (1374)
External dimensions, gross width in in. (mm)	85 3/16 (2163)

PRI 214 [EL STW]

Rotary iron, electric

with fan, the latest controls and flexible working height.



EAN: 4002516422938 / Material number: 11744620 / Old Material Number: 53214009NAM

External dimensions, gross depth in in. (mm)	26 (660)
Net weight in lbs. (kg)	309 (140)
Gross weight in lbs. (kg)	342 (155)
Maximum floor load in N	1400
Emission values	
Emission sound pressure level in the workplace	<70 dB(A) re 20 µPa
Heat dissipation into the room in MJ/h	7.10
Features	
Automatic finger guard / finger guard	•
FlexControl footswitch	•
Feed board	•
Laundry picker	•
Laundry box	•
Laundry return feed	•
Favourites program	•
Incorrect feed recognition	•
Air suspension	•
Pause function	•
High contact pressure	•
Heater plate cleaning and waxing indicator	•
Base (optional)	•
Option of ironing when seated	•
APRI 319 care set for the heater plate included in the scope of delivery	•
Machine-independent accessories	•
Connection options	
Payment system (optional)	•
Peak-load negotiation / energy management	•
Standards / certs / symbols	
Complies with Machinery Directive 2006/42/EC	•