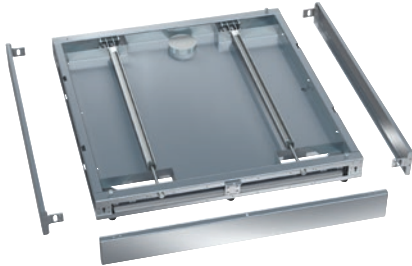


RP 900

Plinth, on wheels

For 900 mm-wide appliances, incl. drip tray without openings for floor drain.



- Suitable for single-door machines, 900 mm wide
- Castors for pulling the machine forward for servicing
- Only suitable for appliances with a drain pump
- Easy access for servicing

EAN: 4002516032465 / Material number: 10941940 / Old Material Number: 69253007D

Product category	
Large-capacity washer-disinfectors, laboratory	•
Machine affiliation	
PLW 8615	•
Product category	
Plinth / base	•
Product characteristics	
Material	Stainless steel
Colour	Stainless Steel
Dimensions and weight	
External dimensions, net height in in. (mm)	3 15/16 (100)
External dimensions, net width in in. (mm)	35 7/16 (900)
External dimensions, net depth in in. (mm)	39 (990)
External dimensions, gross height in in. (mm)	6 1/8 (155)
External dimensions, gross width in in. (mm)	37 1/16 (940)
External dimensions, gross depth in in. (mm)	47 1/4 (1200)
Net weight in lb (kg)	68 (30.80)
Gross weight in lb (kg)	71 (32.00)