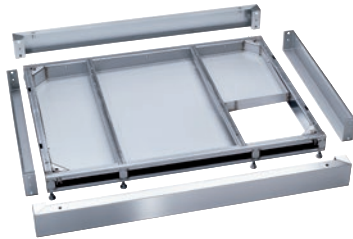


FP 900

Base

Incl. drip tray and openings for connecting services.



- Suitable for 2-door machines, 900 mm wide
- Frame with integrated stainless steel collection tray
- Suitable for appliances with a drain valve or drain pump

EAN: 4002516031925 / Material number: 10941870 / Old Material Number: 69253005D

Product category	
Large-capacity washer-disinfectors, laboratory	•
Machine affiliation	
PLW 8616	•
Product category	
Plinth / base	•
Product characteristics	
Material	Stainless steel
Colour	Stainless Steel
Dimensions and weight	
External dimensions, net height in in. (mm)	3 15/16 (100)
External dimensions, net width in in. (mm)	35 7/16 (900)
External dimensions, net depth in in. (mm)	39 (990)
External dimensions, gross height in in. (mm)	6 3/8 (161)
External dimensions, gross width in in. (mm)	36 13/16 (935)
External dimensions, gross depth in in. (mm)	47 1/4 (1200)
Net weight in lb (kg)	56 (25.20)
Gross weight in lb (kg)	81 (36.30)