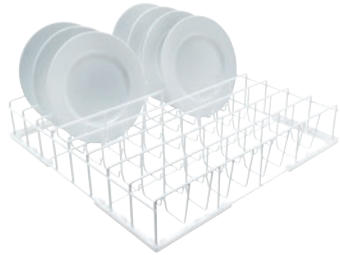


## U 506 Basket

For the optimum loading of plates.

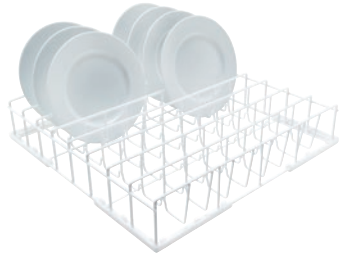


- With 2 rows for different sized plates
- Optional addition of cutlery holder E 167
- Distance between rails 2 3/16 (54) in (mm)

EAN: 4002515249970 / Material number: 09508640 / Old Material Number: 67650601D

Product category	
Fresh-water dishwashers	•
Tank dishwashers	•
Throughfeed tank dishwashers	•
Machine affiliation	
G 8066	•
PG 8041	•
PG 8043	•
PG 8045	•
PG 8055	•
PG 8055 U	•
PG 8056	•
PG 8056 U	•
PG 8057 TD	•
PG 8057 TD U	•
PG 8058	•
PG 8058 U	•
PG 8059	•
PG 8059 U	•
PG 8060	•
PG 8061	•
PG 8061 U	•
PG 8165	•
PG 8166	•
PG 8169	•
PG 8172	•
PG 8172 Eco	•
PTD 901	•
PG 8096	•
PG 8096 U	•
PG 8099	•
PG 8099 U	•
PFD 400	•
PFD 400 U	•
PFD 401	•
PFD 401 U	•
PFD 402	•
PFD 402 U	•
PFD 404	•
PFD 404 U	•
PFD 405	•
PFD 405 U	•
PFD 407	•
PFD 407 U	•
PFD 408 U	•
PTD 702	•
PTD 703	•
PTD 704	•
Product category	
Basket for plates	•

U 506  
Basket  
For the optimum loading of plates.



EAN: 4002515249970 / Material number: 09508640 / Old Material Number: 67650601D

Product characteristics	
Material	Wire, rilsan-coated
Colour	White
Distance between rails in mm	2 3/16 (54)
Capacity	
Plates up to Ø 200 mm [number]	16
Dimensions and weight	
External dimensions, net height in in. (mm)	3 5/8 (92)
External dimensions, net width in in. (mm)	19 11/16 (500)
External dimensions, net depth in in. (mm)	19 11/16 (500)
External dimensions, gross height in in. (mm)	10 1/4 (260)
External dimensions, gross width in in. (mm)	20 1/2 (520)
External dimensions, gross depth in in. (mm)	20 7/8 (530)
Net weight in lb (kg)	5 (2.03)
Gross weight in lb (kg)	7 (3.11)