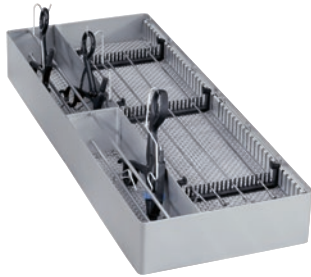


E 457

Insert

for the optimum loading of separable MIS instruments.



- Suitable for 12 handles and work inserts, for example
- Bottom in 3 mm wire mesh, sides closed
- Welded bracket for 8-12 handles, distribution variable
- equipped with 3 bars for storage and locking

EAN: 4002512067331 / Material number: 04618030 / Old Material Number: 69545702D

Product classification	
Washer-disinfectors, medical	•
Large-capacity washer-disinfectors, medical	•
Machine affiliation	
G 7823	•
G 7824	•
G 7825	•
G 7826	•
PG 8527	•
PG 8528	•
PG 8535	•
PG 8536	•
PG 8562	•
PG 8582	•
PG 8582 CD	•
PG 8592	•
Product category	
Insert / module for MIS instruments	•
Product characteristics	
Material	Stainless steel, Plastic
Colour	Stainless Steel, Black
Application area	
Reprocessing of MIS instruments	•
Standard electrical connection	
Number of phases	0
Voltage in V	0
Frequency in Hz	0
Total rated load in kW	0.00
Fuse rating in A	0
Dimensions and weight	
External dimensions, net height in mm	192
External dimensions, net width in mm	490
External dimensions, net depth in mm	62
External dimensions, gross height in mm	4 3/4 (120)
External dimensions, gross width in mm	12 5/8 (320)
External dimensions, gross depth in in (mm)	21 3/8 (540)
Net weight in kg	4 (1.75)
Gross weight in kg	5 (2.02)