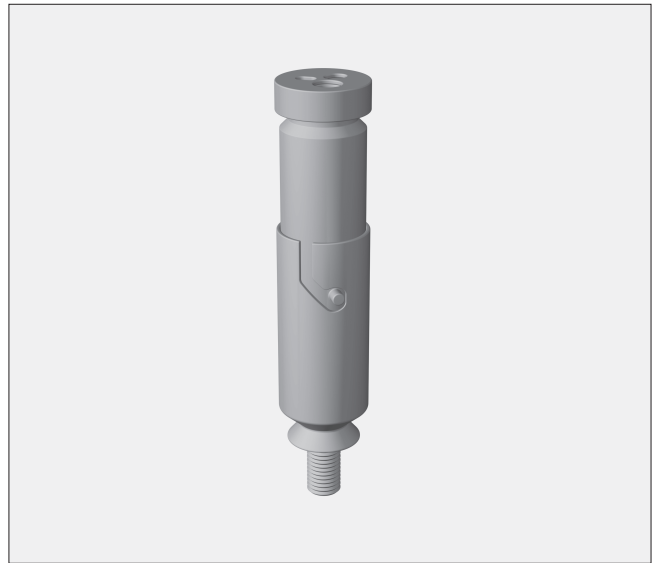



Items supplied

Two part irrigation sleeve E 499,
H approx. 100 mm, Ø 23 mm.

Intended use

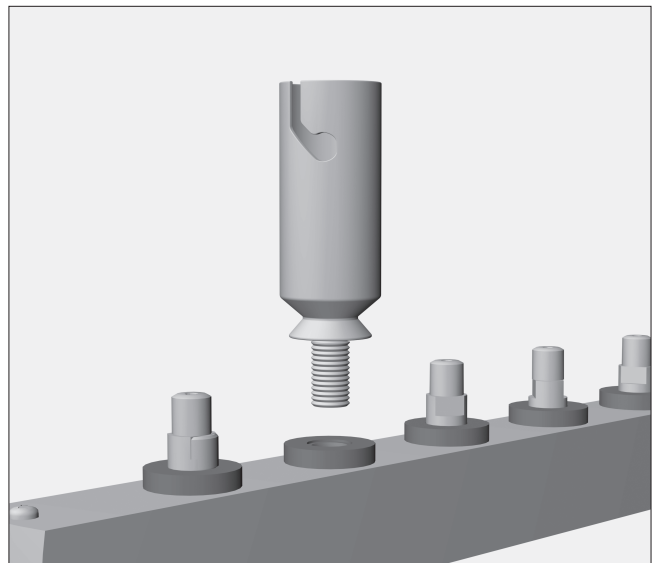
Irrigation sleeve E 499 is designed for reprocessing MIS and ENT insufflation, irrigation and suction cannulae, including suction modifiers.



 Please observe the Warning and Safety instructions in the Operating instructions for your washer-disinfector carefully. You should only reprocess medical products if they have been declared as suitable for machine reprocessing by the manufacturer. Please also observe the manufacturer's care instructions. The programme selected must be suitable for the materials from which the instruments are made. Where possible the programme should be a thermal disinfection programme.

Assembly

- Hold the middle of the upper section of the E 499 irrigation sleeve, turn it in a clockwise direction as far as it will go and then pull it upwards to remove it. Do not turn it by the rotary disc.
- Remove one of the injector jets or blanking screws from the injector strip of a mobile unit, upper basket or module.
- Manually screw the lower section of the E 499 irrigation sleeve into the empty position or insert it into an empty silicone adapter.
- Connect both parts of the E 499 irrigation sleeve, then turn the upper section of the irrigation sleeve anti-clockwise as far as it will go.



Before first use, it may be necessary to carry out a performance test of the mobile unit, upper basket or module.

If several E 499 irrigation sleeves are being used at the same time in a mobile unit, upper basket or module, check that the number of sleeves is permitted with regard to validation.
The maximum number of irrigation sleeves specified for validation must not be exceeded.

Application

- As far as possible, dismantle the suction or irrigation cannulae in accordance with the manufacturer's instructions and open any stopcocks and/or valves.
- With heavy soiling pre-cleaning may be necessary.

⚠ Ensure the patency of lumens prior to reprocessing.

- Hold the middle of the upper section of the E 499 irrigation sleeve, turn it in a clockwise direction as far as it will go and then pull it upwards to remove it. Do not turn it by the rotary disc.
- Prepare the cannula for reprocessing and insert it in the lower section of irrigation sleeve ①.
- Using the rotary disc on the upper section of the irrigation sleeve, select the smallest possible shutter size ②.

The shutter size selected should not be too large so that a sufficient amount of cleaning solution can flow through the cannula during reprocessing.

- Carefully connect both parts of the E 499 irrigation sleeve ③. As you do this, guide the cannula through the shutter (selected previously). This ensures that the irrigation sleeve encapsulates attachments and any valves or suction modifiers.

⚠ When assembling the sleeve it is essential to ensure that the cannula does not protrude over the side of the mobile unit, upper basket or module to avoid possible damage when placed in the washer-disinfector.

- Finally, turn the upper section of the irrigation sleeve anti-clockwise as far as it will go.

⚠ Adequate locking is only assured if the upper section of the irrigation sleeve E 499 is turned anti-clockwise as far as it will go. Otherwise, the pressure of the cleaning solution can force the sections of the irrigation sleeve apart and cause possible damage to the items being reprocessed.

- Check that the locking mechanism is positioned correctly before and after reprocessing.

