

# E 902/1 mobile unit for MIS modules

⚠ Please read the Warning and Safety instructions in the operating Instructions for your G 7827/28 or PG 8527/28 Washer-disinfector carefully. You should only process instruments/medical devices in this mobile unit if they have been declared as suitable for machine processing by the manufacturer. Please also observe the manufacturer's care instructions. The programme selected must be suitable for the materials from which the medical devices to be processed are made. Where possible the programme should include thermal disinfection. The final rinse should, if possible, always be carried out with fully demineralised water. If using automatic mobile unit recognition, please make sure that the coding is correctly set.

Mobile unit E 902/1 with space for six inserts for MIS instruments, H 620, W 640, D 790 mm, fitted with a magnetic strip for automatic mobile unit recognition.

### Accessories supplied

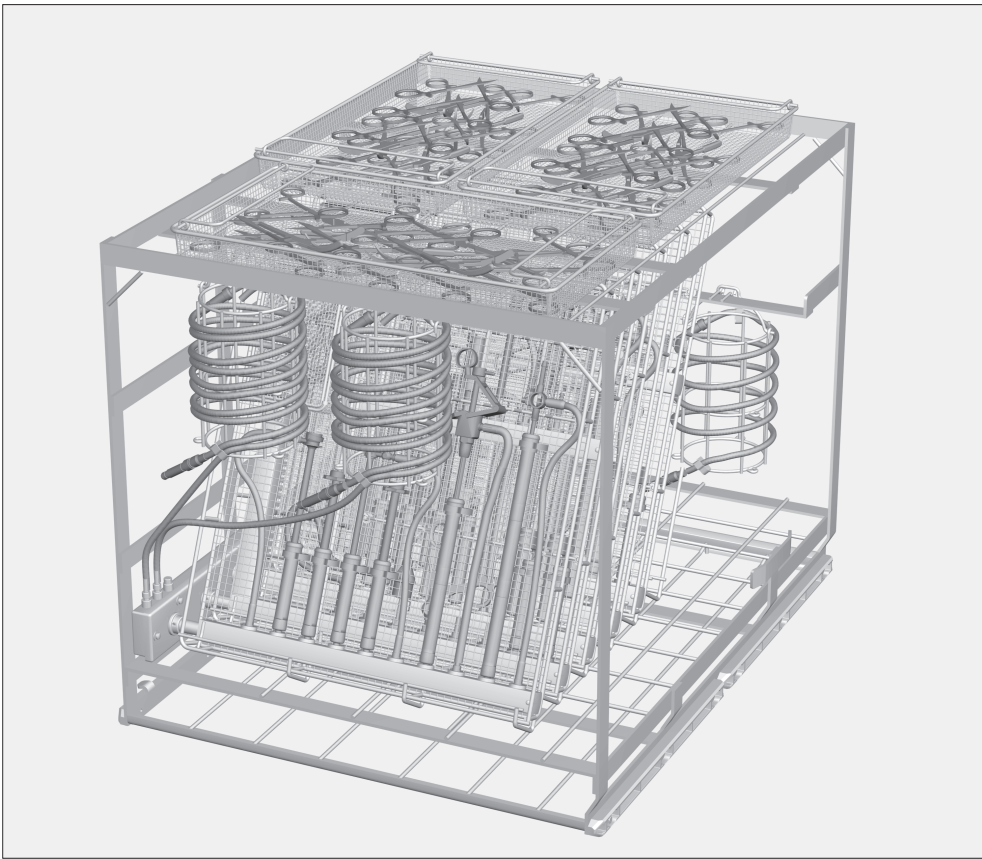
- 3x E 905/1 modules with connections for short MIS instruments
  - 3x E 906/1 modules with connections for long MIS instruments
  - 3x E 444 inserts for fibre optic cables and suction tubes
- The inserts are supplied with their own operating instructions.

- 2 m silicone tubing Ø 5 mm
- 6 x E 362 blanking screws
- 24 x E 445 caps for E 442 injector sleeves with Ø 6 mm bore
- 12 x E 446 caps for E 443 injector sleeves with Ø 10 mm bore

### Areas of application:

Up to six modules for MIS instruments can be placed in the mobile unit at any one time. Fibre optic cables and suction tubes can be processed using up to six E 444 inserts. The holders for these are located at the front and the back of the mobile unit. There are six connectors for cleaning the inside of suction tubes or for connecting long instruments. In addition to this, special inserts for cleaning optical instruments and mesh trays can be placed in the upper level. Mesh trays can be placed in the lower level.

Loading dimensions	E 902/1 [H x W x D in mm]
Upper level	65 x 593 x 780
Lower level	53 x 593 x 780



⚠ Make sure that items in either level are not covered by other items, and do not place items inside other items, as this will prevent instruments being cleaned properly.

### Before loading the machine and before starting a programme, please check that:

- the valves for the water intake for each of the modules are working correctly,
- the modules are in position and correctly connected to the water intake for the mobile unit,
- that the mobile unit is correctly fitted into the cabinet and that it has connected correctly with the water intake.

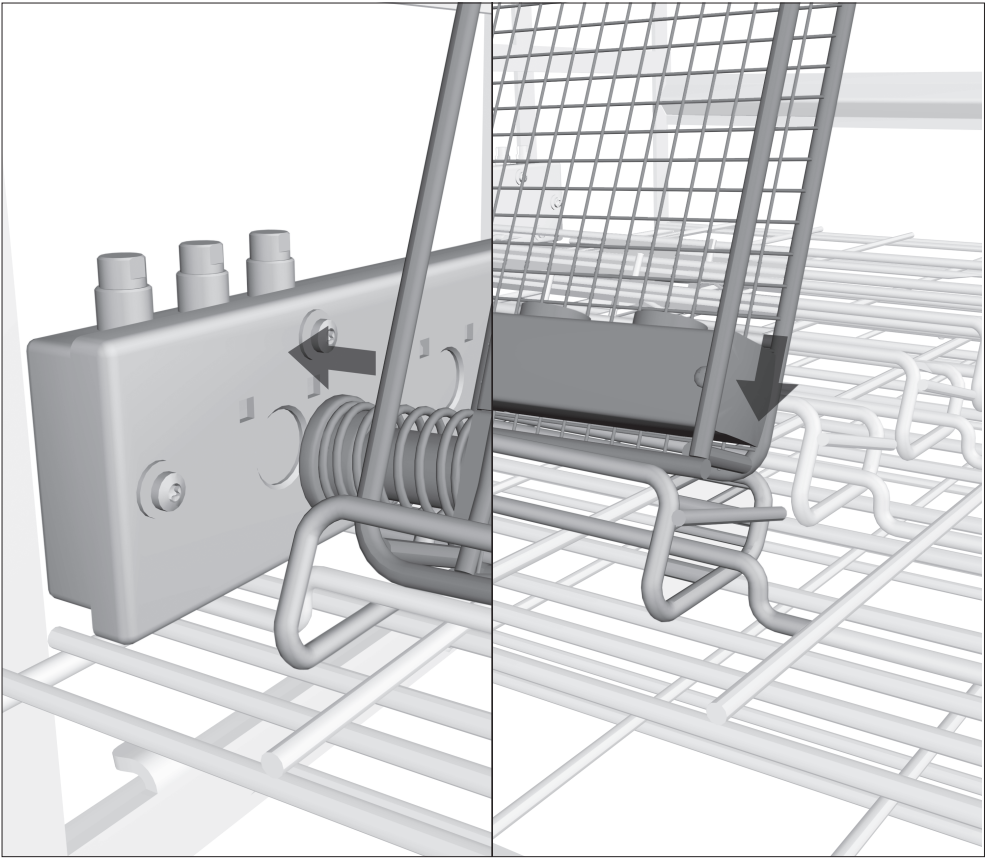
⚠ To ensure a suitable standardised spray pressure for all connections, all screw connectors must be fitted with jets, adapters, sleeves or blanking screws. Damaged jets, adapters or sleeves etc. must not be used.

Empty jets, etc. do not have to be replaced with blanking screws.

For validation purposes please make sure that you follow the loading instructions given on the template.

⚠ All MIS instruments must be dismantled for processing in accordance with the manufacturer's instructions. Long, narrow lumen instruments which cannot be taken apart must be pre-washed in accordance with the manufacturer's instructions.

⚠ Before connecting a hollow instrument please make sure that all hollow sections are free of blockages. Otherwise the cleaning solution will not be able to access all areas properly. Instruments should not be able to come into contact with one another during the cleaning and disinfecting process.



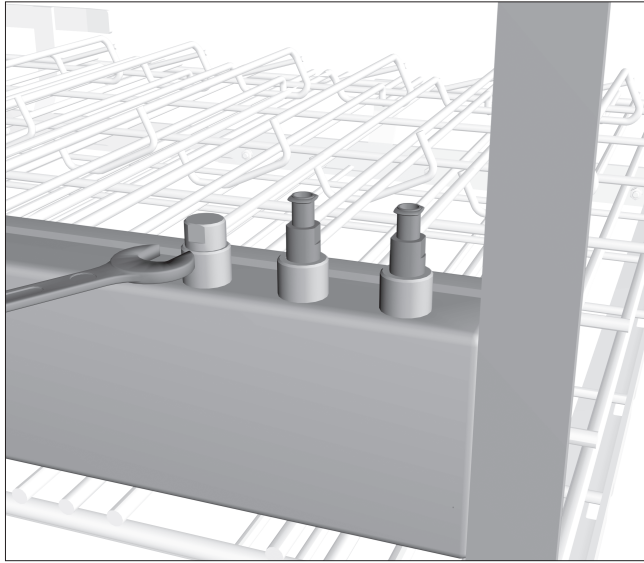
### Placing modules into the mobile unit

- Push the module into the mobile unit, connecting the water intake on the module to that on the mobile unit. The valve will open automatically.
- Fit the module behind the holding bracket on the frame.



## E 902/1 mobile unit for MIS modules

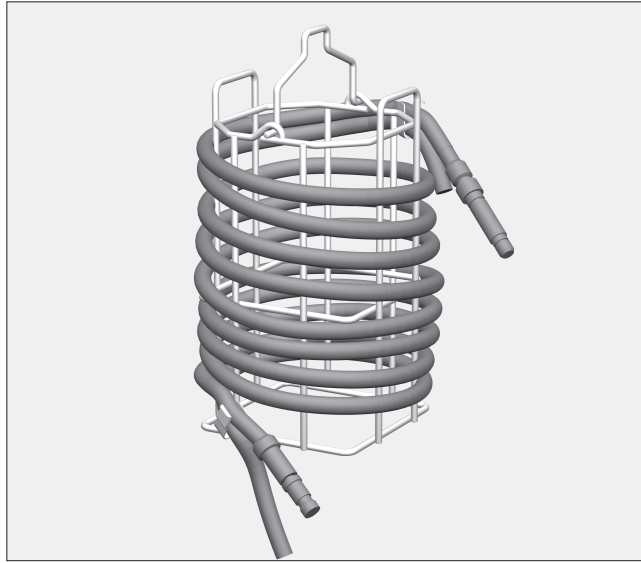
**Miele**  
PROFESSIONAL



### Fitting the injector jets and Luer lock adapters

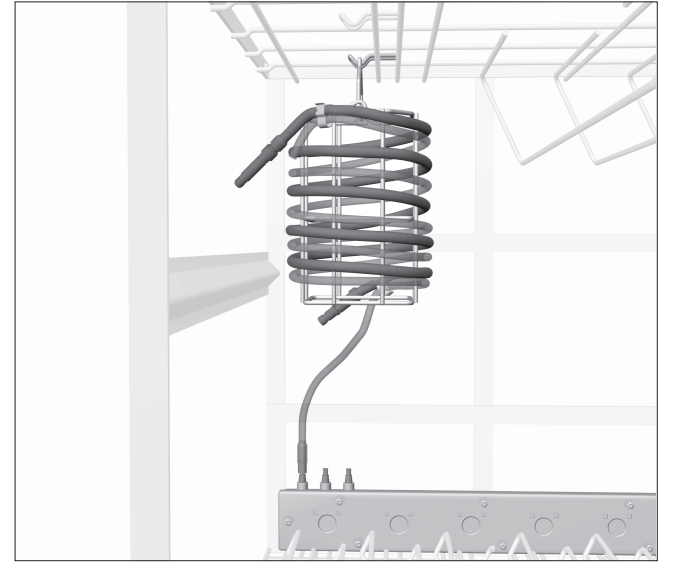
On either side of the mobile unit there are three connectors for injector jets, tube adapters and suction tubes.

- Unscrew the blanking screws from the connectors using an SW 9 spanner.
- Screw the Luer lock adapters or the injector jets into the connectors and tighten them with a spanner.



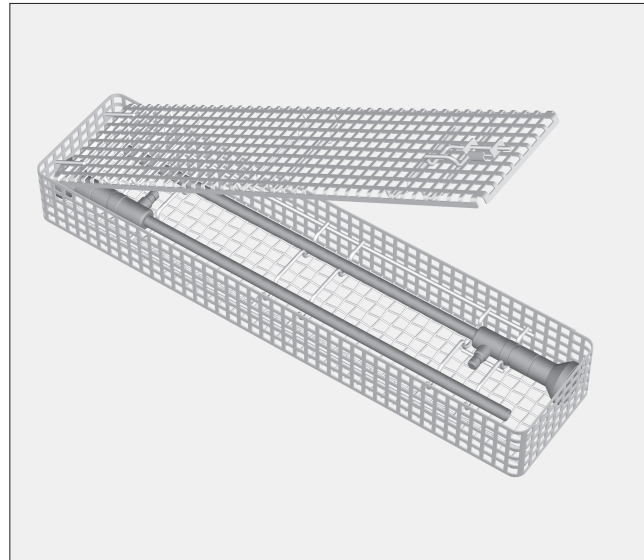
### Fibre optic cables and suction tubes

Fibre optic cables and suction tubes can be processed in insert E 444. The insert comes with its own instructions.



- Hang insert E 444 in the mobile unit, as shown.
- Fit the end of the suction tube to one of the adapters at the side of the mobile unit so that the inside of the tube is thoroughly cleaned.

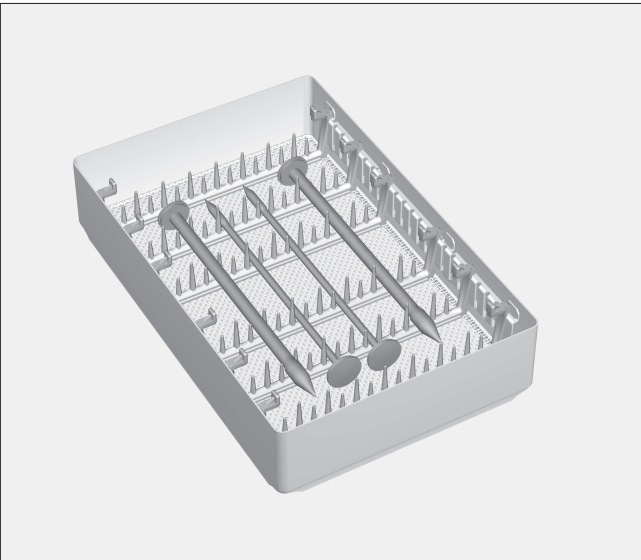
Make sure that the ends of the cables and suction tubes are not caught in the mobile unit or in the door of the washer-disinfector.



### Optics

⚠ In order to protect them from damage, optical instruments must only be processed in the optic manufacturer's inserts, or in Miele special insert E 460 (available as an optional accessory).

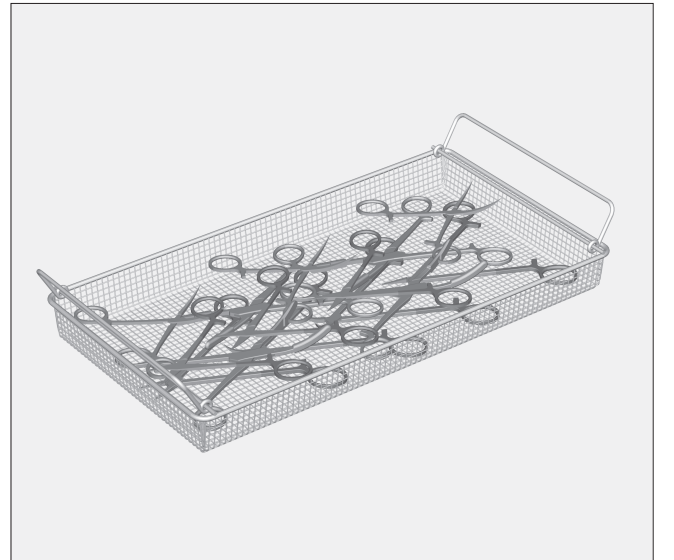
- Place inserts containing optical instruments on the upper level of the mobile unit.



### Trocars without lumen

Trocars (without lumen) and micro-instruments can be processed in insert E 441/1 (available as an optional accessory).

- Place the trocars in the notches.
- Place the insert in the upper or lower level of the mobile unit.

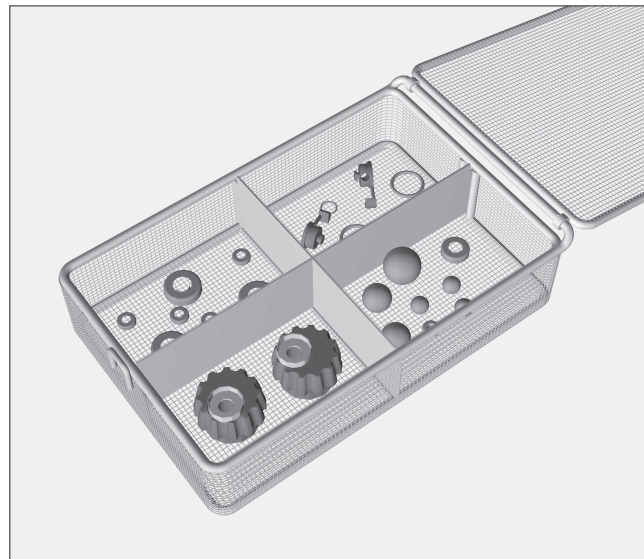


### Mesh trays

Hinged instruments must be opened up before being placed in the mesh trays to minimise the risk of surfaces not being accessed during processing.

- Place mesh trays in the upper level of the mobile unit.

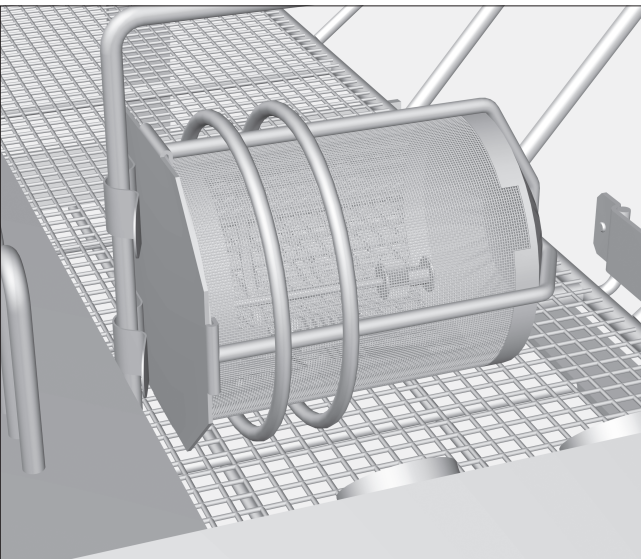
Do not overload the mesh trays as this would stop the surfaces of the items from being cleaned properly.



### Small components

Place small components such as seals and valves in lidded insert E 451 (available as an optional accessory).

- Close the lid, and place in the lower level of the mobile unit.



Place very small items (which could be washed through the mesh trays or through the gap between the mesh tray and the lid) in insert E 473/1 (available as an optional accessory).

- Secure insert E 473/1 to one of the struts on the mobile unit.