

Using for the first time

Before commissioning the tumble dryer for the first time, make sure it has been installed correctly. Connect it correctly. Please read the separate operating instructions supplied with the appliance.



Risk of damage due to incorrect use or operation. This tumble dryer contains a refrigerant that is flammable and explosive. It is essential to read the separate operating instructions.

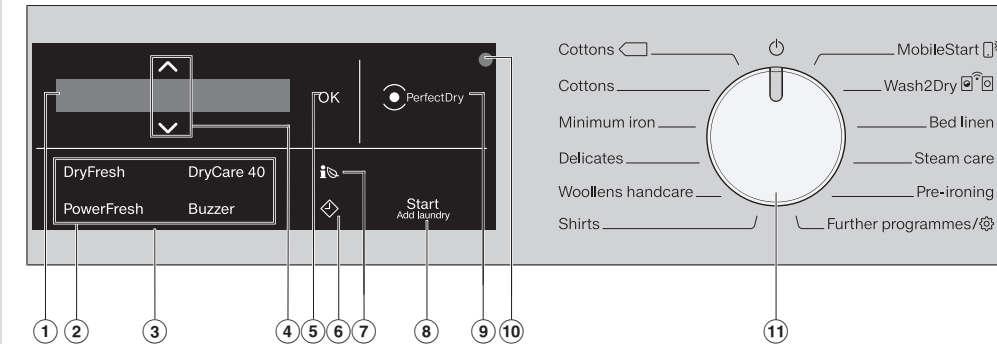
Damage caused by switching the appliance on too soon. The heat pump can be damaged. After setting up the tumble dryer, wait for at least one hour before starting a drying programme.

Switching on the tumble dryer

- Turn the programme selector to a programme.

The welcome tone will sound and the welcome screen will light up. The display will guide you step by step through the initial commissioning process. For further information, please refer to the separate operating instructions.

Operation



1 Control panel

The control panel consists of a display and various sensors.

2 Sensors for the Extras

You can supplement the drying programmes with Extras.

3 Display

Various values are displayed and/or selected in the display.

4 ^ v sensors

The values in the display can be changed with the ^ v sensors.

5 OK sensor

Confirm selected values with the OK sensor.

6 sensor

The sensor starts the Delay start function.

Energy savings

There are various steps you can take to avoid unnecessarily long drying times and high energy consumption:

- Make sure your laundry is spun at the maximum spin speed before drying.

- Load according to the optimum amount of laundry recommended for the drying programme. This will mean that the energy consumption for the amount of laundry is the most economical.

- Make sure the room temperature is not too high. If there are other heat producing appliances in the room in which the

Operating the sensors

The sensors react to fingertip contact. If a sensor is illuminated, it can be selected. If a sensor is brightly lit, this means it is currently selected. If a sensor is dimly lit, this means that selection is possible.

7 i sensor

You can use the i sensor to call up an energy consumption forecast for the selected drying programme.

8 Start/Add laundry sensor

Touching the Start/Add laundry sensor starts the selected programme. The current programme can be interrupted to add laundry. The programme can be started as soon as the sensor is flashing on and off. The sensor lights up constantly once the programme has started.

9 PerfectDry indicator

The PerfectDry system measures the residual moisture present in the laundry in programmes with selectable drying levels and provides a more precise drying result. The indicator flashes at the beginning of the programme and lights up towards the end of the programme.

10 Optical interface

For service technicians.

11 Programme selector

For selecting programmes and for switching the appliance off.

- MobileStart and Wash2Dry for an alternative programme selection. Prerequisite: the tumble dryer is connected to the network
- Further programmes/ for additional programmes and options for changing settings.

Drying

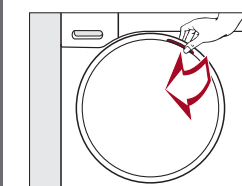
Preparing the laundry

Damage due to foreign objects which were not removed from the laundry. Foreign objects can melt, burn, or explode.

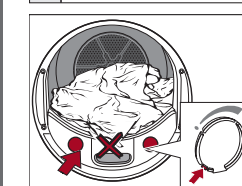
- Remove foreign objects (e.g. detergent dispenser, loose bra hangers, lighter and all objects) from the laundry.
- Fasten duvet covers and pillow cases to prevent small items from being rolled up inside them.

Loading the tumble dryer

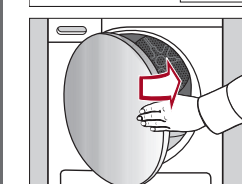
Do not overload the drum. Overloading can give a disappointing drying result and cause unnecessary wear and tear to the laundry. It can also cause more creasing.



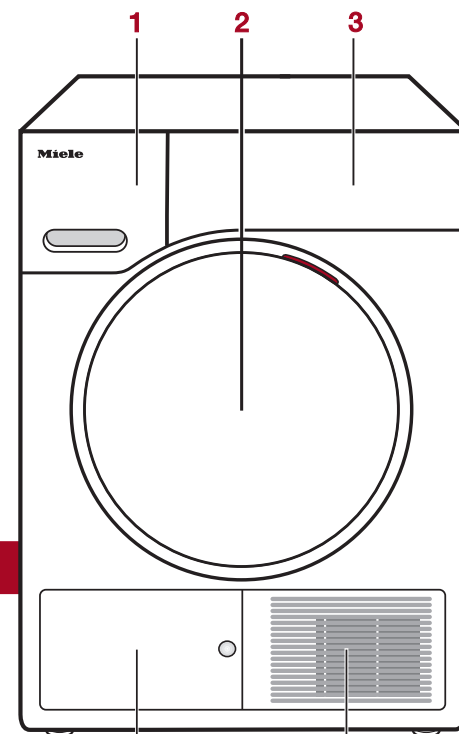
- Loosen the laundry.
- Open the tumble dryer door.
- Check that the drum is empty.
- Load the laundry in the drum.
- Insert the fragrance flacon.



If you are drying without a fragrance capsule, close both sockets. Slide the tab of each slider downwards (arrows).



Risk of damage to laundry. When closing the door, make sure that laundry does not get trapped in the door opening.



- Condensed water container
- Door
- Control panel
- Plinth filter access panel
- Cold air intake grille

1. Selecting a programme

- Turn the programme selector. The interior drum lighting will come on.

There are 4 possible ways to select a programme:

Useful tip: The condensed water container must be filled to use certain programmes.

1. Selecting standard programmes via the programme selector

- Turn the programme selector to the required programme.

The selected programme will be shown in the display. This will then be replaced by the standard display.

2. Selection of further programmes via Further programmes/ and the display

- Turn the programme selector to the Further programmes/ position.
- Touch the ^ v sensors until the programme you want appears in the display.
- Confirm the programme with the OK sensor.

3. Selection via MobileStart

- Turn the programme selector to the MobileStart position.

- Follow the instructions in the display.
- Touch the Start/Add laundry sensor.

The tumble dryer can now be operated via a mobile device together with the Miele App.

4. Selecting the Wash2Dry function

- After the programme has finished in the washing machine, the tumble dryer display will show the most appropriate drying programme for the laundry.
- Load the tumble dryer.
- Touch the Start/Add laundry sensor.

2. Selecting programme settings

Selecting the drying level

Drying levels can be selected for certain programmes as per the "Programme chart".

- Touch the v or ^ sensor to select a drying level.

Useful Tip: HygieneDry: Reduce laundry loads by half.

Selecting the programme duration

You can select a programme duration for the programmes Cool air, Warm air, Basket programme.

- Touch the v or ^ sensor to select a programme duration.

Selecting an Extra

Extras can be selected according to the "Programme chart", but are not available for all drying levels.

- Touch the sensor for the Extra you want. It then lights up brightly.

DryFresh

Refreshing without steam.

Tip: use the DryFresh fragrance flacon, reduce the load size.

DryCare 40

Gentle temperature for all fabrics that are free of wool and are washable at temperatures of 40°C and above. It is also suitable for fabrics with the symbol on the care label. Tip: reduce the amount of laundry for the load.

PowerFresh

Refresh using steam.

Tip: use the DryFresh fragrance flacon, reduce the load size.

Buzzer

A buzzer sounds at the end of the programme.

Delay start/SmartStart

Delay start

With Delay start you can delay the start of a programme. The start of the programme can be delayed from 15 minutes up to a maximum of 24 hours.

SmartStart

The SmartStart function (only available in selected countries) lets you define a time period during which your tumble dryer will start automatically. The machine will start on receipt of a signal, e.g. from your energy supplier, that indicates that the electricity rate is particularly economical.

EcoFeedback

You can use the i sensor to call up an energy consumption forecast for the selected drying programme.

- Touch the i sensor.

The estimated energy consumption will be displayed as a bar chart.

3. Starting the programme

- Touch the flashing Start/Add laundry sensor.

The Start/Add laundry sensor lights up and the programme starts. When Delay start is being used, the programme duration will appear after the Delay start time has elapsed.

Adding or removing laundry

You have forgotten an item of laundry, but the programme has already started.

- Touch the Start/Add laundry sensor.

The door can be opened lights up in the display.*

- Open the tumble dryer door.

- Add or remove laundry.

- Close the door.

- Touch the Start/Load laundry sensor to start the programme.

* Exceptions

In some cases – for example, during the cooling phase or the Proofing programme – it is not possible to add laundry items.

HygieneDry drying level: the HygieneDry drying process starts at the end of the normal drying process and must not be interrupted.

Cancelling the current programme

You cannot change to another programme once a programme has started. This prevents the appliance being operated unintentionally.

If you adjust the programme selector, i Cannot be changed will light up in the display. This indicator goes out when you select the original programme.

- Turn the programme selector to the position.

The programme is cancelled. You can now select a new programme.

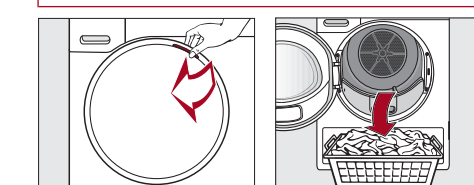
End of the programme

At the end of the programme

The programme is finished when Finish/Anti-crease or Finish appears in the display. The Start/Add laundry sensor goes out.

- 10 minutes after the end of the programme the Start/Add laundry sensor will begin to flash slowly and the display will go out.
- The tumble dryer switches off automatically.

Do not open the tumble dryer door before the end of the programme.



- Open the door.
- Remove the laundry.

Items left in the dryer could be damaged by overdrying when the dryer is used the next time. Always remove all items from the drum.

- If the dryer is switched on and the door is opened, the drum lighting will come on. The drum lighting will go out after a few minutes to save energy.
- Turn the programme selector to position.
- Clean the fluff filters.
- Close the drum door.
- Empty the condensed water container.

Filling the condensed water container

For some programme applications, the condensed water container must be filled to at least the -min- mark.

- With the condensed water draining externally, the condensed water container is empty. Only fill with commercially available condensed water.
- Fill through the rings of the pouring spout.



To stop the spray jet becoming calcified, only fill with tap water in exceptional circumstances.

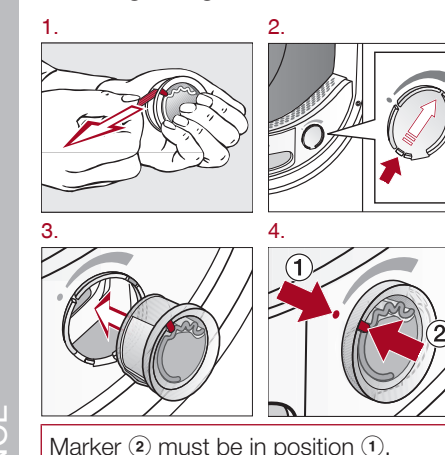
FragranceDos

Useful tip: This tumble dryer has 2 sockets for inserting fragrance flacons. You can use one or both sockets to give your laundry a pleasant fragrance.

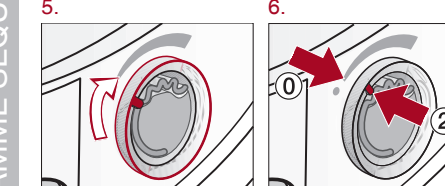
Close the unused socket.

Before using a fragrance flacon, please read "Warning and Safety instructions - Using a fragrance flacon (optional accessory)" and "Fragrance flacon" in the operating instructions.

Inserting a fragrance flacon



Marker 2 must be in position 1.



Marker 2 must be in position 0.

Setting the fragrance intensity

The further you turn the outer ring of the fragrance flacon clockwise, the more intense the fragrance.

Closing the fragrance flacon

Turn the outer ring anti-clockwise until marker 2 is in position 0.

Removing the fragrance flacon

Turn the outer ring until marker 2 is in position 1.

- Remove the fragrance flacon.



To prevent any fragrance running out of the flacon, do not lay it down on any surface.

- Only store the fragrance flacon in its original packaging.

fold here

fold here

fold here

fold here

fold here

fold here

Programme overview

Programme	Load (weight of dry laundry)	Items	Extras
Cottons	9 kg	Cotton items such as those described under <i>Cottons Normal</i> with normal residual moisture.	
Cottons	9 kg	Towelings, jersey wear, T-shirts, underwear, baby clothes, workwear, covers, jackets, bathrobes, and flannelette bed linen. Do not use <i>Extra dry</i> for jersey fabrics (e.g. T-shirts, underwear, baby clothes), as they have a tendency to shrink.	
Minimum iron	4 kg	Workwear, overalls, pullovers, dresses, trousers, leggings and table linen.	
Delicates	2.5 kg	Dress shirts, blouses, lingerie, appliquéd garments.	
Woolens handcare	2 kg	Pullovers, knitted jackets, socks, stockings.	
Shirts	2 kg	Shirts and blouses.	
MobileStart		The Miele App is used to select programmes and operate the appliance.	
Wash2Dry		Automatic programme selection depending on the networked washing machine.	
Bed linen	4 kg	Bed linen	
Steam care	1 kg	Cotton trousers, anoraks, shirts.	
Pre-ironing	1 kg	Cotton trousers, anoraks, shirts.	
Warm air	9 kg	Thick and multi-layered jackets, pillows, sleeping bags, blankets.	
Outerwear	2.5 kg	For outdoor clothing.	
Proofing	2.5 kg	Microfibre fabric, skiwear, outerwear, fine close weave cotton garments (poplin), tablecloths.	
Express	4 kg	Garments suitable for the <i>Cottons</i> programme.	
Sportswear	3 kg	Sportswear.	
Automatic plus	5 kg	Loading mix of cotton and easy care.	
Pillows	-	Pillows: 2 small 40 x 80 cm or 1 large 80 x 80 cm	
Basket programme	3.5 kg basket load	Use dryer basket for bags, shoes, soft toys, hats, scarves, gloves, sequined tops.	
Silks handcare	1 kg	Blouses, shirts.	
Denim	3 kg	Denim garments, e.g. jackets, jeans, shirts, and skirts.	
Cool air	9 kg	All textiles.	

= DryFresh, = DryCare 40, = PowerFresh, = Buzzer
Extras cannot be combined. Exception: buzzer
X = Yes, - = No

Care symbols

	Drying	Ironing
	Normal/Higher temperature	Very hot
	Reduced temperature (for delicate fabrics): select <i>Gentle tumble</i>	Hot
	Do not tumble dry	Warm
		Do not treat with heat

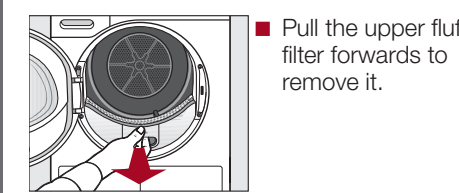
PROGRAMME CHART

Cleaning and care

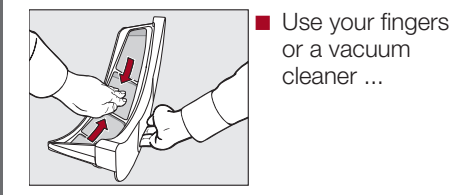
Fluff filter

Removing visible fluff
Clean the 2 fluff filters in the door opening at the end of every programme.

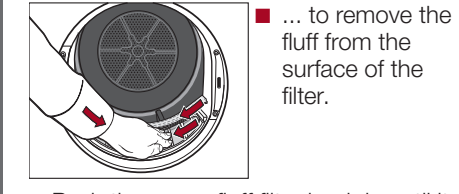
Remove the fragrance flacon.



■ Pull the upper fluff filter forwards to remove it.



■ Use your fingers or a vacuum cleaner ...

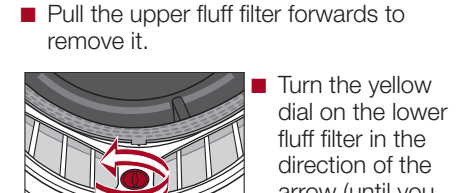


■ ... to remove the fluff from the surface of the filter.

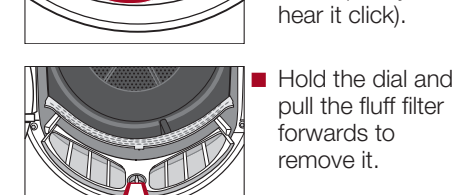
■ Push the upper fluff filter back in until it clicks into position.
■ Close the door.

Cleaning the fluff filters and air flow openings thoroughly

If the drying duration has become longer or the surface of the filters is visibly compacted with fluff, you should carry out the following cleaning procedure.



■ Pull the upper fluff filter forwards to remove it.



■ Turn the yellow dial on the lower fluff filter in the direction of the arrow (until you hear it click).



■ Hold the dial and pull the fluff filter forwards to remove it.

■ Use a vacuum cleaner with a long crevice nozzle attached to remove any visible fluff from the upper air flow openings.

■ Flush the fluff filters through with warm running water.
■ Shake the fluff filters thoroughly and then dry them carefully.

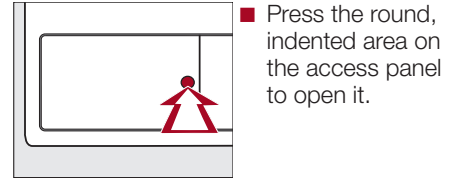
Ensure the filters are dry before replacing them. Wet filters could cause operational faults.

■ Refit all of the fluff filters and close the door.

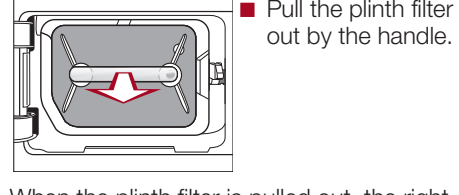
Plinth filter

Clean the plinth filter when the programme running time is longer than usual or whenever Clean the plinth filter. See lights up.

To delete the message: confirm with *OK*.

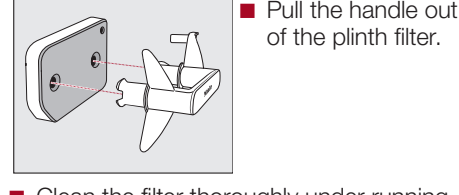


■ Press the round, indented area on the access panel to open it.



■ Pull the plinth filter out by the handle.

When the plinth filter is pulled out, the right guide pin will slide out. The guide pin prevents the flap from being closed without the plinth filter in place.



■ Pull the handle out of the plinth filter.

■ Clean the filter thoroughly under running water.

■ Squeeze the plinth filter carefully several times as you rinse it.

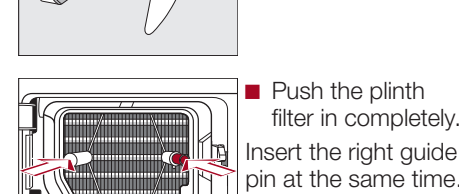
■ Rinse the plinth filter until all visible residues have been removed.



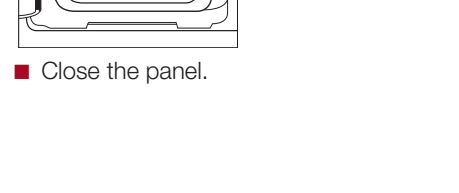
■ Use a damp cloth to remove any fluff.

Refitting the plinth filter

■ Fit the plinth filter back on the handle the right way round.



■ Push the plinth filter in completely. Insert the right guide pin at the same time.



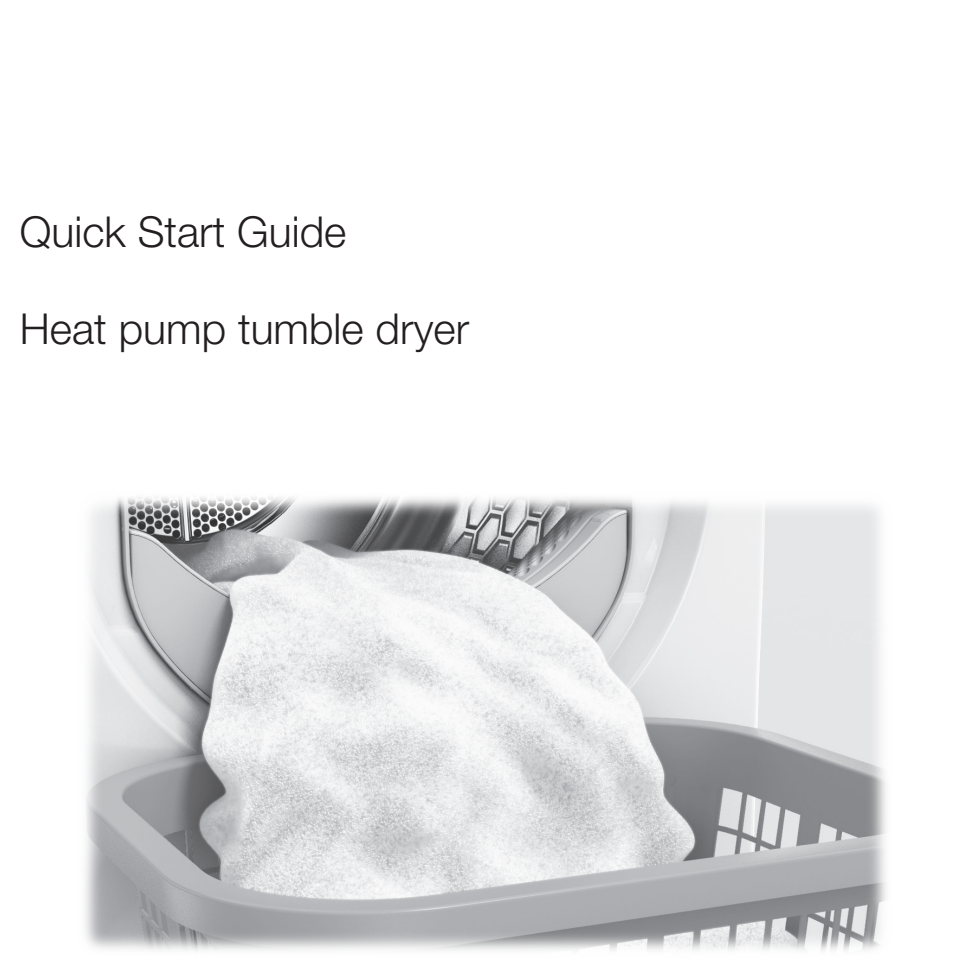
■ Close the panel.

Problem solving guide

Some of the messages in the display are more than one line long. Touch the or sensor to read them in full.

Problem	Possible cause and remedy
000	Access via a code has been activated. ■ You must enter the correct PIN code to use the tumble dryer. See "Settings – Code" in the operating instructions.
Empty container. See lights up after a programme has been cancelled.	The condensed water container is full or there is a kink in the drain hose. ■ Open and close the door with the tumble dryer switched on to clear the fault, or switch the tumble dryer off and then on again. ■ Empty the condensed water container. ■ Check the drain hose.
Clean the plinth filter. See lights up at the end of a programme.	There is a build-up of fluff. ■ To deactivate the message, confirm with <i>OK</i> . ■ See "Cleaning and care" in the operating instructions. ■ Clean the fluff filter. ■ Clean the plinth filter.
Clean the plinth filter. See lights up after a programme has been cancelled.	There is a blockage due to a build-up of fluff. ■ See "Cleaning and care" in the operating instructions. ■ To deactivate the message, turn the programme selector to the position. ■ Clean the fluff filter. ■ Clean the plinth filter. ■ Clean the air flow openings. ■ Clean the heat exchanger.
Fill condensate container	The condensed water container is empty. When certain programmes are being used, water is taken from the condensed water container and recycled. ■ To deactivate the message, confirm with <i>OK</i> . ■ Fill the condensed water container to at least the mark.
Finish/Cooling down	The laundry is cooled down at the end of the programme. ■ Either remove the laundry and spread it out to cool down or leave it in the tumble dryer to cool down during the cooling phase.

Problem	Possible cause and remedy
The display is in a different language.	A different language has been selected in "Settings – Language ". ■ Set the language you want. The flag symbol serves as a guide.
The display remains dark, and the sensor does not light up or flash.	There is no power to the tumble dryer. ■ Check whether the mains plug is plugged in and switched on. ■ Check whether the circuit breaker has tripped. The tumble dryer has switched off automatically to save energy. ■ Turn the programme selector to switch the tumble dryer on again.
The laundry is not sufficiently dry.	The load consisted of different types of fabric. ■ Finish drying using the <i>Warm air</i> programme. ■ Select a more suitable programme next time.
Items made of synthetic fibres are charged with static electricity after drying.	Items made of synthetic fibre can become charged with static electricity in the tumble dryer. ■ Static charge can be reduced by adding fabric softener to the final rinse in the washing programme.
There is a build-up of fluff.	Fluff is principally the result of friction when garments are being worn and to some extent when they are being washed. Tumble drying hardly causes any fluff to form. Fluff is collected by the fluff filters and the plinth filter. ■ See "Cleaning and care" in the operating instructions.
There are operating noises (whirring/humming).	This is not a fault. The compressor (heat pump) is operating, or you have selected a programme which sprays condensed water into the drum. ■ No action is required.



Quick Start Guide Heat pump tumble dryer

These short instructions are not a substitute for the operating instructions supplied with the appliance. Please read the operating instructions supplied with your tumble dryer before using it for the first time and take note of the Warning and Safety instructions, as well as the full descriptions on how to use your appliance.

